

ROUTE NO.	SECTION	COUNTY	LEADER	SHEET
C.H. 14	99-00076-11-BR	LAKE	66	1
FED. ROAD DIST. NO.		ILLINOIS PROJ. AND DISTRICT		

CONTRACT NO: 83763

INDEX OF SHEETS

- 1. COVER SHEET
- 2. GENERAL NOTES
- 3. SUMMARY OF QUANTITIES & STANDARDS
- 4.-5. SCHEDULE OF QUANTITIES
- 6. HORIZONTAL ALIGNMENT
- 7.-9. TYPICAL CROSS SECTIONS
- 10.-11. ROADWAY DETAILS
- 12.-13. PLAN AND PROFILE SHEETS
- 14.-16. MAINTENANCE OF TRAFFIC
- 17. STRIPING PLAN
- 18. EROSION CONTROL PLAN
- 19.-20. TYPICAL PAVEMENT MARKINGS
- 21.-38. BRIDGE PLANS
- 39.-40. BORINGS
- 41.-66. CROSS SECTIONS

HIGHWAY STANDARDS

SEE SHEET 3

UTILITIES

COMMONWEALTH EDISON COMPANY
 1500 FRANKLIN BOULEVARD
 LIBERTYVILLE, IL 60048
 TERRY BLECK, ENGINEERING COORDINATOR
 847 816 5239

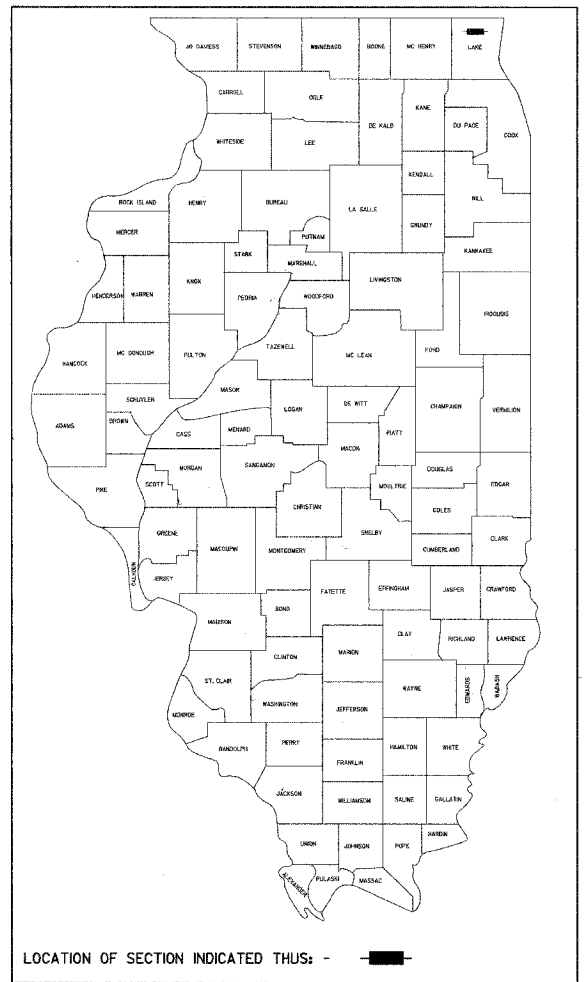
NORTH SHORE GAS COMPANY/ PEOPLES ENERGY
 3001 GRAND AVE.
 WAUKEGAN, IL 60085
 MICHAEL SCHYMAN
 847 263 4666

NORTH SHORE SANITARY DISTRICT
 P.O. BOX 750, RUSSELL AVE.
 GURNEE, IL 60031
 MR. JOHN KRAUCUNAS
 847 623 6060

SBC
 1200 N. ARLINGTON HEIGHTS ROAD
 2ND FLOOR
 ARLINGTON HEIGHTS, IL 60004
 LEANNE RODGERS
 847 506 8082

STATE OF ILLINOIS
DEPARTMENT OF TRANSPORTATION
DIVISION OF HIGHWAYS
PLANS FOR PROPOSED
BRIDGE REPLACEMENT AND REHABILITATION PROGRAM

F.A.U. 174
C.H. 14 /MILLBURN ROAD
OVER NORTH MILL CREEK
STRUCTURE NO. 049-3075
SECTION 99-00076-11-BR
PROJECT BRM-7003(952)
JOB NO.: C-91-334-00
LAKE COUNTY

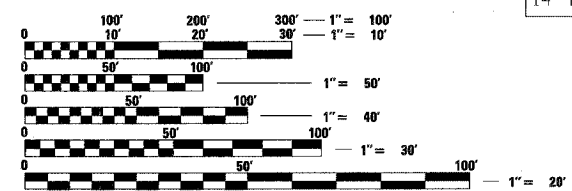


LOCATION OF SECTION INDICATED THUS: - [black rectangle] -

DESIGN FUNCTIONAL CLASSIFICATION:
 MINOR ARTERIAL
 DESIGN SPEED, 45MPH
 DESIGN ADT 12,750 (2025)
 DESIGN DESIGNATION: 9290 (2005) MINOR ARTERIAL 1.10 B(20)

SCALES

- PLAN 0' = 20'
- PROFILE HORIZ. 0' = 20'
- PROFILE VERT. 0' = 5'
- CROSS SECTIONS 0' = 5'



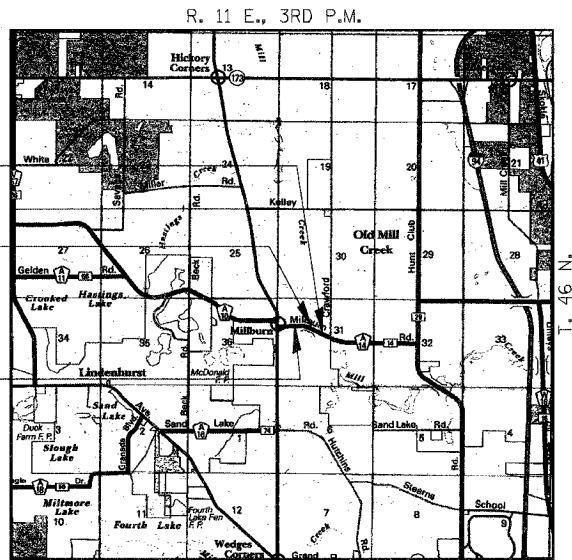
FULL SIZE PLANS HAVE BEEN PREPARED USING STANDARD ENGINEERING SCALES. REDUCED SIZED PLANS WILL NOT CONFORM TO STANDARD SCALES. IN MAKING MEASUREMENTS ON REDUCED PLANS, THE ABOVE SCALES MAY BE USED.

J.U.I.E.
JOINT UTILITY LOCATION INFORMATION FOR EXCAVATION
1-800-892-0123

IMPROVEMENT ENDS STATION 20+73.63

STA. 17+65 - SPECIAL BRIDGE DESIGN CONTINUOUS REINFORCED CONCRETE SLAB BRIDGE. 3 SPANS 36'-0", 43'-0", 36'-0" RDWY: 14' BIKE PATH; SKEW = 10°

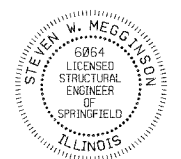
IMPROVEMENT BEGINS STATION 13+46.02



LAYOUT

APPROXIMATE SCALE: 0 1 MILE

GROSS LENGTH = NET LENGTH OF SECTION = 727.61 FEET = 0.138 MILES



Expires 11-30-06

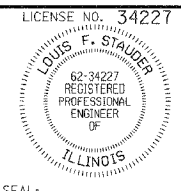
Steven W. Megginson 5-26-05
 ILLINOIS STRUCTURAL NO. 6064

APPROVED	<i>May 31</i>	20 05
	<i>Mark H. Buchler</i>	COUNTY ENGINEER
PASSED	<i>June 5</i>	20 05
	<i>Chas</i>	DISTRICT ENGINEER OF LOCAL ROADS & STREETS
APPROVED	<i>June 6</i>	20 05
	<i>Dina O'Keefe</i>	REGIONAL ENGINEER
		STATE OF ILLINOIS DEPARTMENT OF TRANSPORTATION

DATE: *5/26/05*

BY: *Steven W. Megginson*

LICENSE EXPIRES: NOVEMBER 30, 2005



LICENSE NO. 34227

ILR

Rice, Berry and Associates
 A Division of Hampton, Lenzini and Renwick, Inc.
 Civil & Structural Engineers
 801 S. Durkin Drive
 Springfield, Illinois 62704
 217-546-3400

Account Number 12-07-0043
 P.O. Box 1036
 DuQuoin, Illinois 62832
 618-790-4637

FEDERAL DESIGN ENGINEER [Signature] 847-705-4179