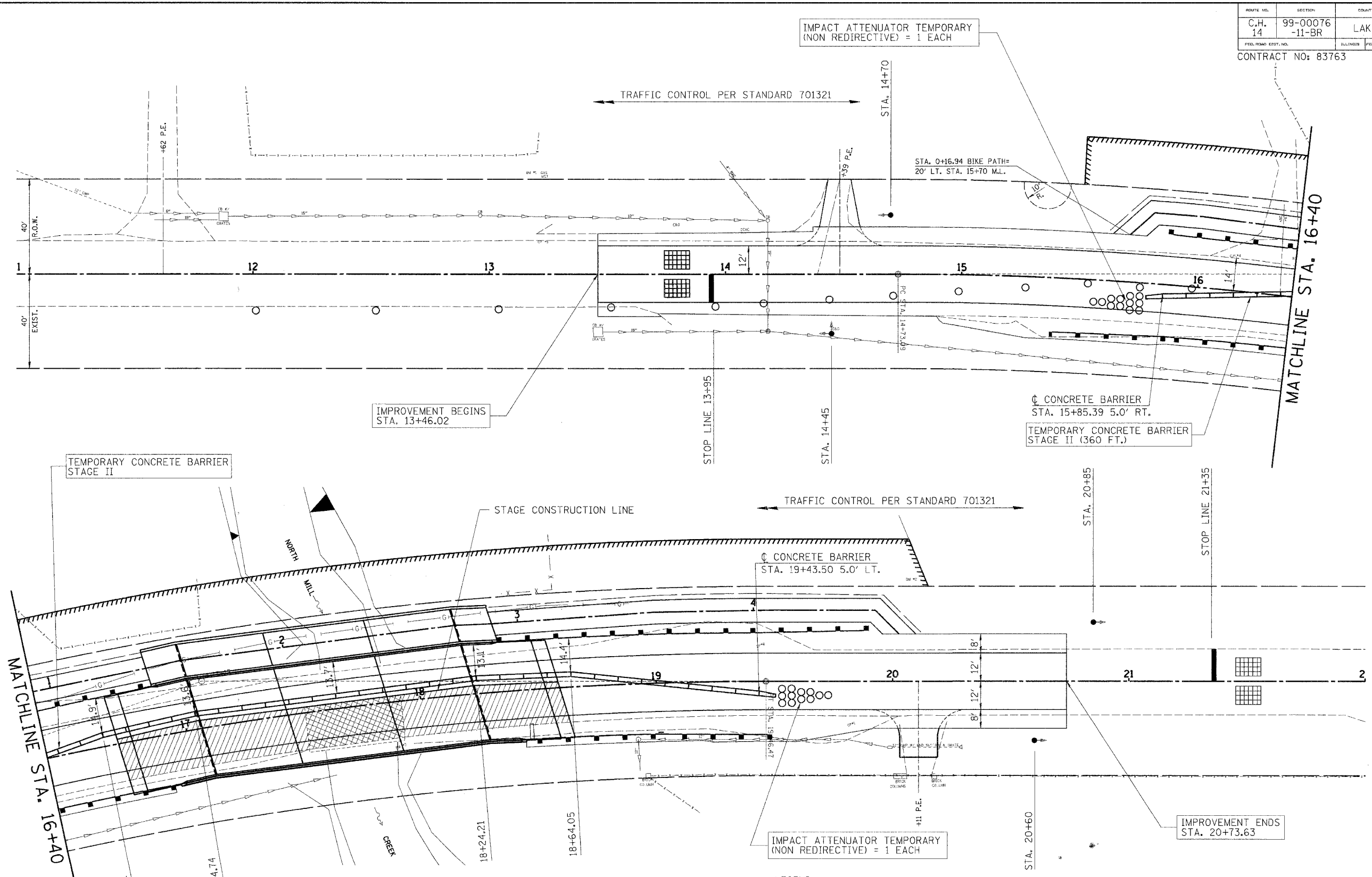


ROUTE NO.	SECTION	COUNTY	POST MILES	SHEET
C.H. 14	99-00076 -11-BR	LAKE	66	16
FED. ROAD DIST. NO.	ILL. PROJ. NO.	FED. AID PROJECT-		

CONTRACT NO: 83763



MATCHLINE STA. 16+40

MATCHLINE STA. 16+40

IMPROVEMENT BEGINS
STA. 13+46.02

IMPACT ATTENUATOR TEMPORARY
(NON REDIRECTIVE) = 1 EACH

TEMPORARY CONCRETE BARRIER
STAGE II (360 FT.)

IMPACT ATTENUATOR TEMPORARY
(NON REDIRECTIVE) = 1 EACH

IMPROVEMENT ENDS
STA. 20+73.63

- LEGEND
- DETECTOR ZONE
 - BRIDGE REMOVAL
 - PAVEMENT REMOVAL
 - BITUMINOUS WIDENING
 - DRUM
 - TRAFFIC SIGNAL

HLR

Rice, Berry and Associates
A Division of Hampton,
Lenzini and Renwick, Inc.
Civil & Structural Engineers
801 S. Durkin Drive
Springfield, Illinois 62704
217-546-3400

Account Number
12-07-0043-1
Date: 05/23/05

P.O. BOX 1036
DuQuoin, Illinois 62832
618-790-4637

DESIGNED: L.F.S. CHECKED: S.W.M. DRAWN: D.T.M.

**MAINTENANCE OF TRAFFIC
STAGE 2**

SECTION 99-00076-11-BR
C.H. 14 / MILLBURN ROAD
LAKE COUNTY