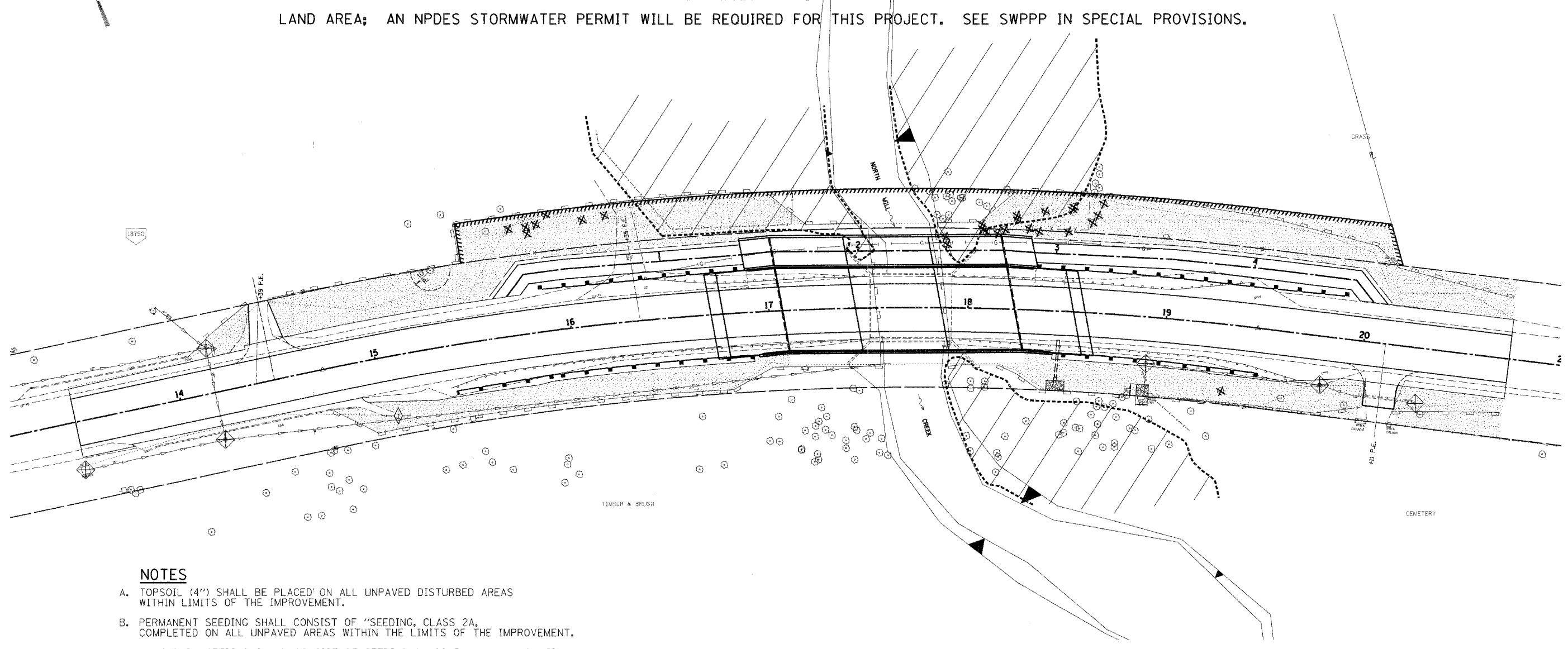


EROSION CONTROL PLAN & STORMWATER POLLUTION PREVENTION PLAN

ROUTE NO.	SECTION	COUNTY	TOTAL SHEETS	SHEET NO.
C.H. 14	99-00076-11-BR	LAKE	66	18
FED. ROAD DIST. NO.		ILLINOIS	FED. AID PROJECT	
CONTRACT NO: 83763				

THIS PROJECT DISTURBS 1.0 ACRES OF TOTAL LAND AREA. COMPLIANCE WITH THE NATIONAL POLLUTION DISCHARGE ELIMINATION SYSTEM (NPDES) STORMWATER PERMIT IS NECESSARY IF A PROJECT DISTURBS 1 OR MORE ACRES OF TOTAL LAND AREA; AN NPDES STORMWATER PERMIT WILL BE REQUIRED FOR THIS PROJECT. SEE SWPPP IN SPECIAL PROVISIONS.



NOTES

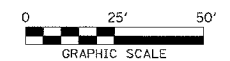
- A. TOPSOIL (4") SHALL BE PLACED ON ALL UNPAVED DISTURBED AREAS WITHIN LIMITS OF THE IMPROVEMENT.
- B. PERMANENT SEEDING SHALL CONSIST OF "SEEDING, CLASS 2A, COMPLETED ON ALL UNPAVED AREAS WITHIN THE LIMITS OF THE IMPROVEMENT.
- C. TEMPORARY SEEDING SHALL CONSIST OF SEEDING CLASS 7 ON ALL UNPAVED AREAS WITHIN THE LIMITS OF THE IMPROVEMENT.
- D. FOR SCHEDULE OF QUANTITIES SEE SHEET 4.

TYPICAL CONSTRUCTION SEQUENCING

1. INSTALL SEDIMENT AND EROSION CONTROL MEASURES
2. COMPLETE TREE REMOVAL (CLEAR & GRUB).
3. STRIP & STOCKPILE TOPSOIL & COMPLETE STOCKPILE PROTECTION.
4. CONSTRUCT PROPOSED STRUCTURE & ROADWAY GRADING.
5. INSTALL TEMPORARY OR FINAL STABILIZATION MEASURES.
6. COMPLETE FINAL CONSTRUCTION ITEMS & CLEANUP.
7. REMOVE EROSION CONTROL ITEMS.
8. RESTORE FINAL AREAS.

LEGEND

- PERIMETER EROSION BARRIER
- TEMPORARY DITCH CHECKS (SPECIAL)
- DITCH FLOW OR OUTFALL
- INLET PROTECTION, SPECIAL OR INLET & PIPE PROTECTION
- INDICATES WETLAND AREA
- SEEDING CLASS 2, SPL. OR SODDING
- STONE RIPRAP, CLASS A4



RLR
 Rice, Berry and Associates
 A Division of Hampton,
 Lenzini and Renwick, Inc.
 Civil & Structural Engineers
 801 S. Durkin Drive
 Springfield, Illinois 62704
 217-546-3400
 P.O. BOX 1036
 DuQuoin, Illinois 62832
 618-750-4637
 Account Number
 12-07-0043-1
 Date: 08/04/04
 DESIGNED: S.W.M. CHECKED: S.W.M. DRAWN: D.T.M.

EROSION CONTROL PLAN
SECTION 99-00076-11-BR
C.H. 14 / MILLBURN ROAD
LAKE COUNTY