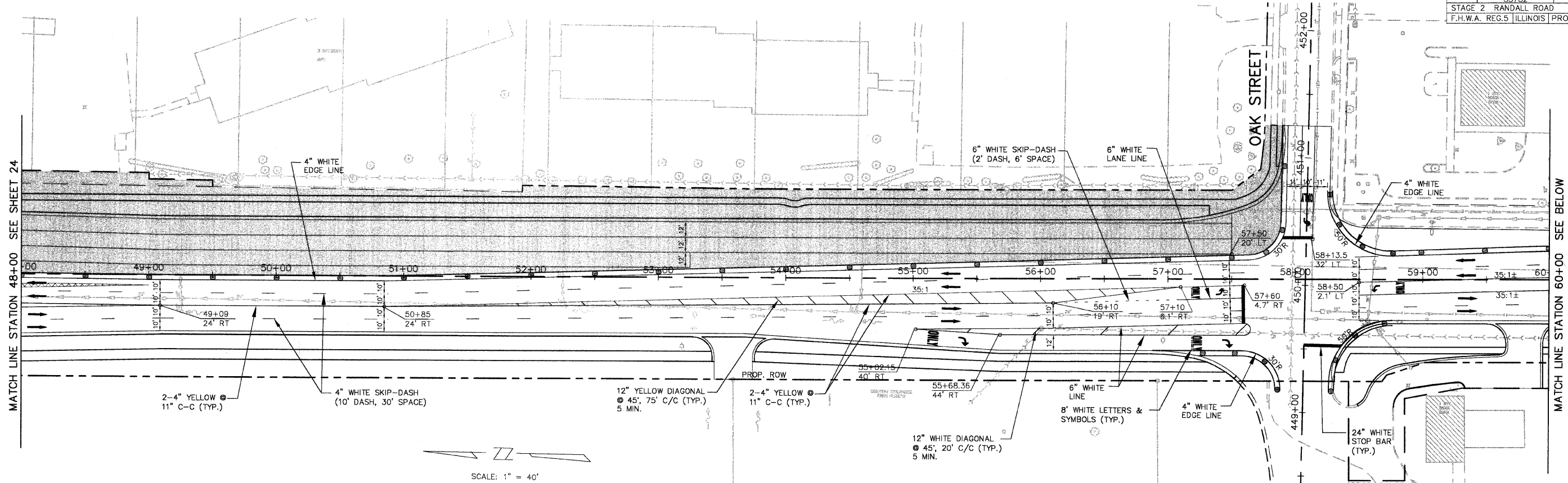


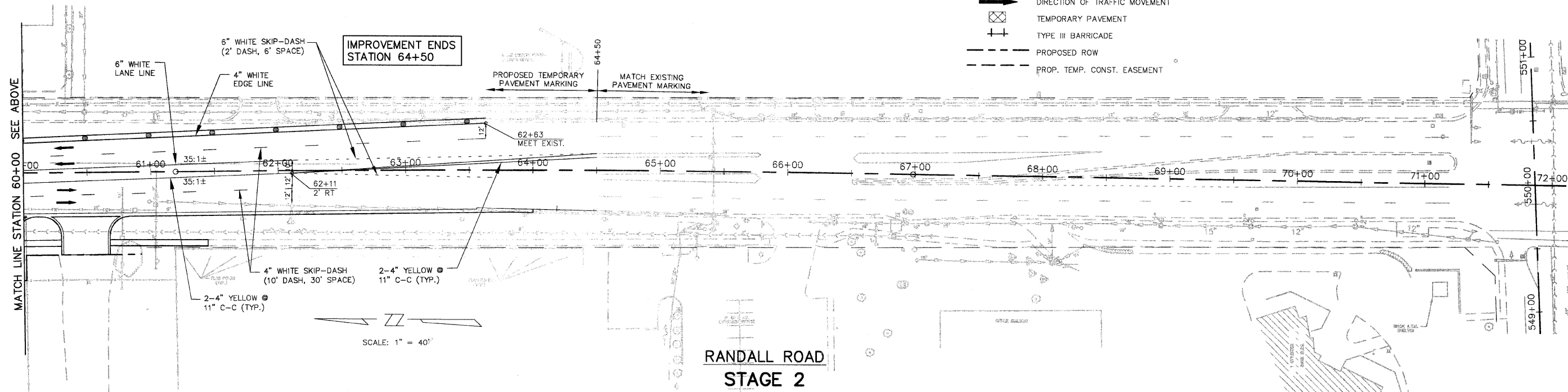
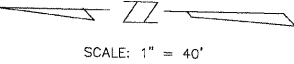
F.A.P. ROUTE	COUNTY SECTION	COUNTY	TOTAL SHEET
336	99-0024.3-00-PV	KANE	268
CONTRACT NO.			25
83782			
STAGE 2 RANDALL ROAD			
F.H.W.A. REG.5 ILLINOIS PROJECT F-0336(008)			



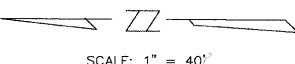
**RANDALL ROAD  
 STAGE 2**

**LEGEND**

- TRAFFIC CONTROL DEVICE W/ STEADY BURN LIGHT - OR - (BARRICADE, DRUM VERTICAL PANEL)
- ▨ LIMITS OF CONSTRUCTION
- ▩ CONCRETE PAVEMENT JOINTS
- ➔ DIRECTION OF TRAFFIC MOVEMENT
- ▧ TEMPORARY PAVEMENT
- ⊥ TYPE III BARRICADE
- PROPOSED ROW
- - - PROP. TEMP. CONST. EASEMENT



**RANDALL ROAD  
 STAGE 2**



MATCH LINE STATION 48+00 SEE SHEET 24

MATCH LINE STATION 60+00 SEE BELOW

MATCH LINE STATION 60+00 SEE ABOVE

PRAIRIE STREET