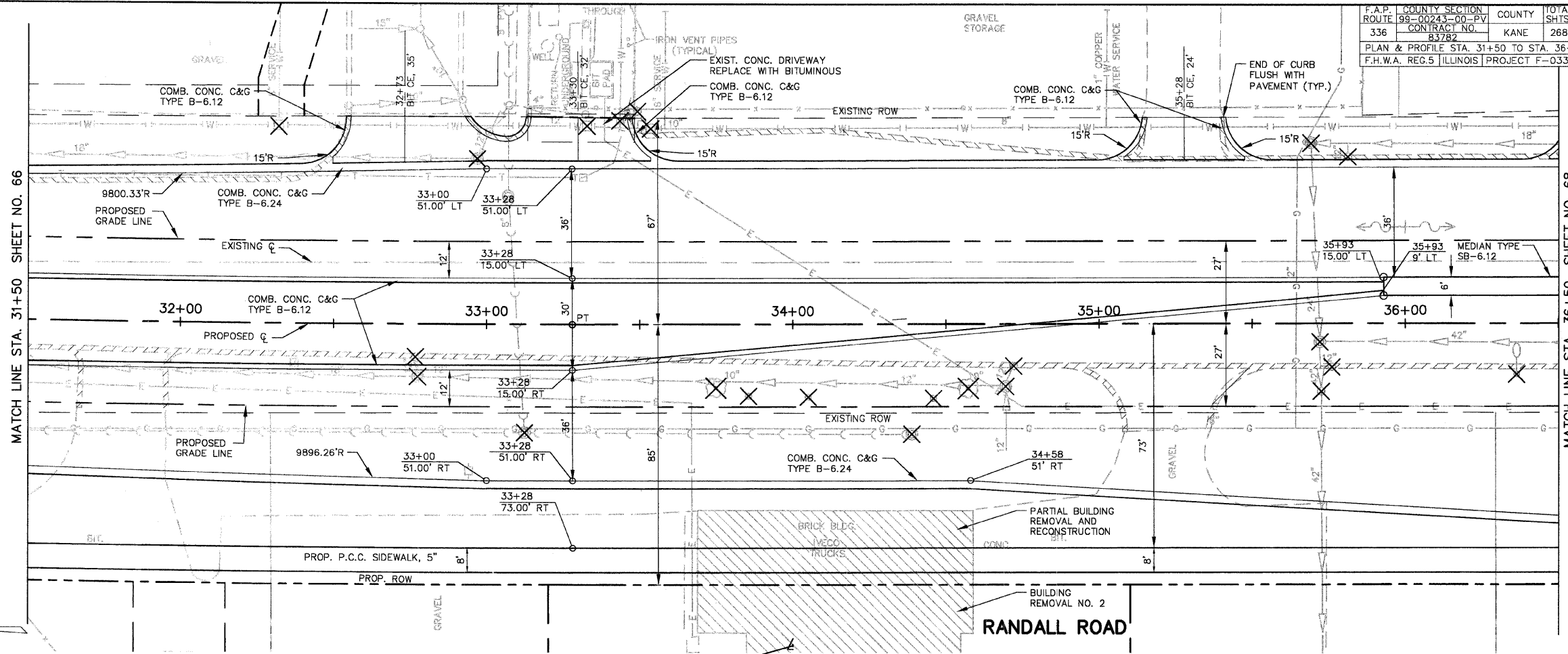


**RANDALL ROAD
 C CURVE #2**

RADIUS	=	9950.00'
ARC LENGTH	=	232.66'
CHORD LENGTH	=	232.65'
TANGENT LENGTH	=	116.33'
DEGREE OF CURVE	=	00'-34"-33"
MID ORDINATE	=	0.68'
EXTERNAL SECANT	=	0.68'
INCLUDED ANGLE	=	01'-20"-23"
PC	=	30+95.36
PT	=	33+28.01

F.A.P. ROUTE	99-00243-00-PV	COUNTY	KANE	TOTAL SHEETS	268
CONTRACT NO.	83782			NO.	67
PLAN & PROFILE STA. 31+50 TO STA. 36+50					
F.H.W.A. REG.5 ILLINOIS PROJECT F-0336(008)					



SCALE: 1" = 20'

