

**DRAINAGE STRUCTURE TABLE STA. 10+50 TO STA. 15+50**

NO.	STA.	OFFSET	STRUCTURE TYPE/SIZE	FRAME & GRATE	RIM ELEV. EPI/FR	INVERT (N)	INVERT (S)	INVERT (E)	INVERT (W)
5	10+90	82' RT	24 EQ ELL	GRATE	759.80				
6	11+10	96' RT	A5	1C	763.50	759.56	757.13		
7	11+85	71' RT	24 EQ ELL	GRATE			756.25		
8	10+95	63' LT	18 EQ ELL	GRATE	757.20				
9	11+05	63' LT	A5	1C	759.60	756.92	754.55		
10	11+50	63' LT	A5	1C	755.75	753.29	759.29		
10A	11+70	49' LT	A4	1C	761.40	752.87	752.87		
11	12+00	32' LT	A4	24	764.20			754.40	
12	12+00	49' LT	A4	1C	760.70	752.34	752.24		754.24
13	12+00	32' RT	A4	24	764.20				760.20
14	12+00	55' RT		12	764.20				760.00
15	NOT USED								
16	13+50	62.5' RT		24	GRATE	752.75			
17	13+85	65' RT		24	GRATE		752.40		
18	NOT USED								
19	14+50	32' LT	A4	24	753.45	748.95			
19A	14+50	47' LT	A4	1C	754.00	747.86	747.76		748.81
20	14+50	42.67' RT		24	753.18				750.52
21	14+50	59' RT		12					750.45
22	NOT USED								
23	NOT USED								

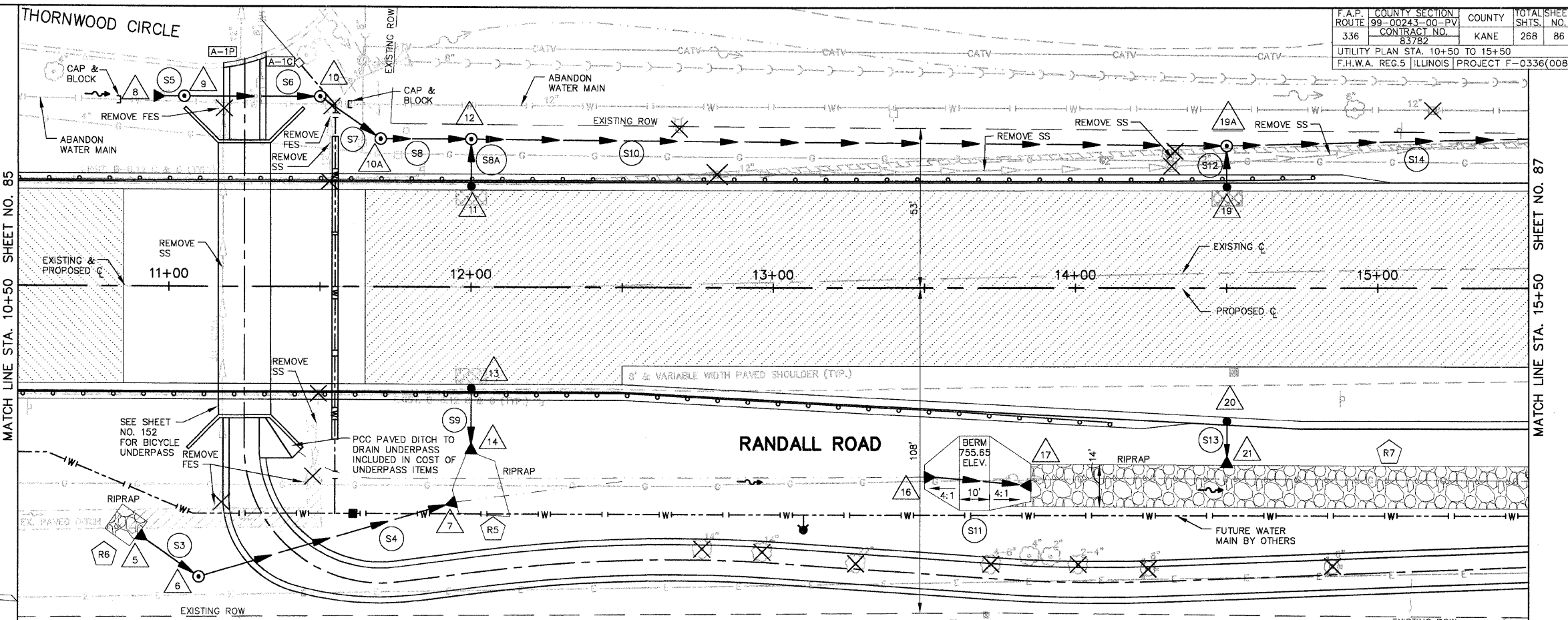
**ROCK OUTLET PROTECTION TABLE STA. 10+50 TO STA. 15+50**

NO.	ASSOCIATED STRUCTURE OUTLET NO.	ROCK GRADATION	DEPTH (IN.)	WIDTH 1 (FT.)	WIDTH 2 (FT.)	LENGTH (FT.)	AREA (SQ. YD.)
R4	NOT USED						
R5	14	4	20	19 (Avg)	19 (Avg)	32	
R6	5	4	20	10	10	10	12
R7	17	4	20	14	14	215	335

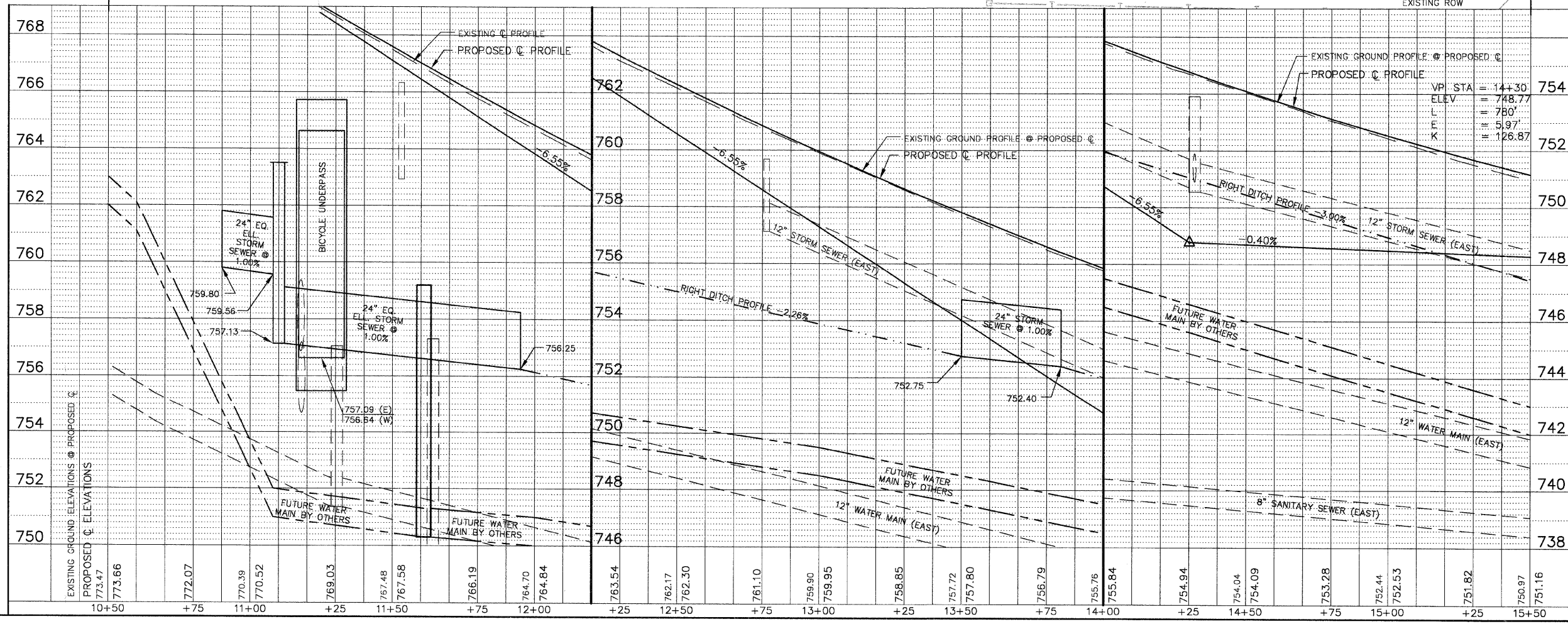
\* MEET EXISTING PAVED DITCH

**PIPE TABLE STA. 10+50 TO STA. 15+50**

PIPE NO.	PIPE LOCATION		DESCRIPTION	DIA (IN)	L (FT)	S (%)	TRENCH BACKFILL	
	FROM STR #	TO STR #					L (FT)	VOL (CY)
S3	5	6	SS 1 RCCP IV	24 EQ ELL	18	1.00		
S4	6	7	SS 1 RCCP IV	24 EQ ELL	82	1.00	28	4.1
S5	8	9	SS 1 RCCP IV	18 EQ ELL	4	2.80		
S6	9	10	SS 1 RCCP IV	18 EQ ELL	45	2.80	18	11.6
S7	10	10A	SS 2 RCCP IV	18 EQ ELL	24	1.75		
S8	10A	12	SS 2 RCCP IV	18	30	1.75		
S8A	11	12	SS 2 RCCP IV	12	16	1.00	2	2.5
S9	13	14	SS 1 RCCP IV	12	16	1.00	2	0.6
S10	12	19A	SS 2 RCCP IV	18	250	1.75		
S11	16	17	SS 1 RCCP IV	24	23	1.00		
S12	19	19A	SS 2 RCCP IV	12	14	1.00	2	1.3
S13	20	21	SS 1 RCCP IV	12	9	0.47	2	0.5
S14	19A	25	SS 2 RCCP IV	18	150	2.75		



SCALE: 1" = 20'



F.A.P. ROUTE	COUNTY SECTION	COUNTY	TOTAL SHEET
336	99-00243-00-PV	KANE	268
UTILITY PLAN STA. 10+50 TO 15+50	CONTRACT NO. 83782		86
F.H.W.A. REG.5 ILLINOIS PROJECT F-0336(00B)			

MATCH LINE STA. 15+50 SHEET NO. 87

MATCH LINE STA. 10+50 SHEET NO. 85