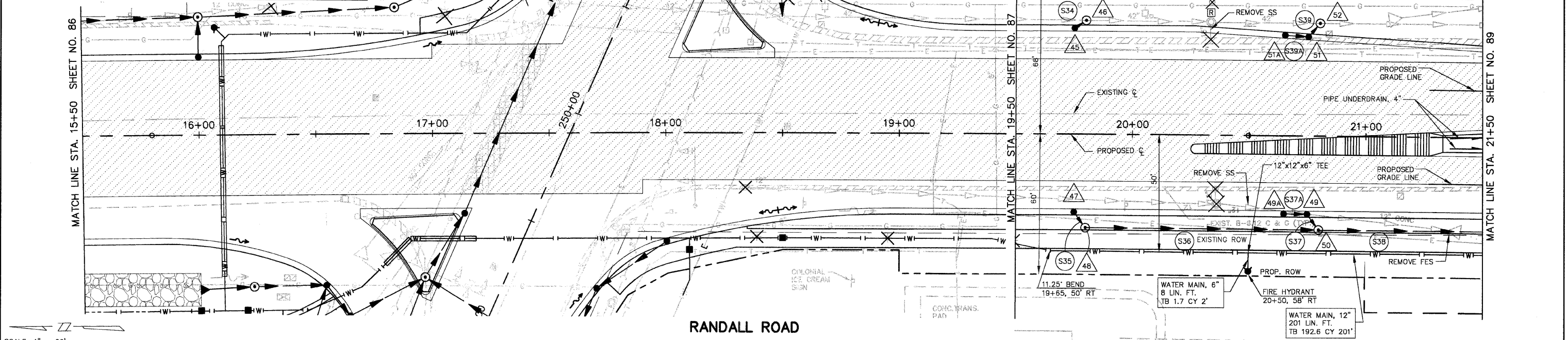


NO.	STA.	OFFSET	STRUCTURE TYPE/SIZE				FRAME & GRATE	RIM ELEV EPI/FR	INVERT (N)	INVERT (S)	INVERT (E)	INVERT (W)
			MH	CB	INL	OTHER						
45	19+75	44' LT	C 2				24	745.83			742.41	
46	19+80	48.80' LT	A 5				1C	746.10	738.28 EX	738.28 EX	742.35	
47	19+75	32' RT	A 4				24	745.95			741.95	
48	19+80	40' RT	A 4				1C	746.40		741.77	741.87	
49	20+75	32' RT	A 4				24	745.63	741.55		741.45	
49A	20+85	32' RT	A 4				24	745.65		741.65		
50	20+80	40' RT	A 4				1C	746.00	741.33	741.23	741.37	
51	20+75	41.12' LT	A 4				24	745.53	741.92		741.92	
51A	20+85	41.71' LT	A 4				24	745.55		742.02		
52	20+80	48.20' LT	A 5				1C	745.00	737.71 EX	737.71 EX	741.84	

PIPE NO.	LOCATION FROM STR #	TO STR #	DESCRIPTION	DIA (IN)	L (FT)	S (%)	TRENCH BACKFILL	
							L (FT)	VOL (CY)
S34	45	46	SS 1 RCCP IV	12	6	1.00	6	1.7
S35	47	48	SS 1 RCCP IV	12	8	1.00	8	2.7
S36	48	50	SS 2 RCCP IV	12	100	0.44	100	38.3
S37	49	50	SS 1 RCCP IV	12	8	1.00	8	2.9
S37A	49A	49	SS 1 RCCP IV	12	10	1.00	10	1.3
S38	50	57	SS 2 RCCP IV	12	171	1.29	171	124.5
S39	51	52	SS 1 RCCP IV	12	8	1.00	5	1.3
S39A	51A	51	SS 1 RCCP IV	12	10	1.00	10	1.3



SCALE: 1" = 20'

