

DRAINAGE STRUCTURE TABLE STA. 21+50 TO STA. 26+50

NO.	STA.	OFFSET	STRUCTURE TYPE/SIZE	FRAME & GRATE	RIM ELEV EP/FR	INVERT (N)	INVERT (S)	INVERT (E)	INVERT (W)
53-56			NOT USED						
57	22+51	40' RT	A 7	1C	745.70	739.02	739.02 SE	737.02	737.02 W
57A	22+27	57' RT	A 4	1C	742.80		737.31		737.02 NW
58	22+73	32' RT	A 4	24	745.34	741.11			
59	22+63	32' RT	A 4	24	745.38	739.15 NW	741.01		
60	22+51	70' RT		60" PRC FES	GRATE				737.32
61	22+63	CL	A 4	8	745.80	738.74			
62	22+73	32' LT	A 4	24	745.34	739.11			
63	22+63	32' LT	A 4	24	745.38	738.41	739.01		
64	22+25	48' 21" LT	A 5	1C	744.60	736.89 EX	736.54		
65	22+43	64' LT		42" PRC FES	GRATE				736.40
66	22+99	32' RT	C 2	24	745.37		741.24		
67	23+05.5	32' RT	A 4	24	745.41	741.18		741.08	
68	22+99	8' RT	C 2	11V	745.37		741.24		
69	23+05.5	8' RT	A 4	11V	745.42	741.18		740.73	740.83
70	23+05.5	CL	A 4	8	745.73			740.56	740.86
71	22+99	8' LT	C 2	11V	745.37		741.24		
72	23+05.5	8' LT	A 4	11V	745.42	741.18		740.39	740.49
73	22+99	32' LT	C 2	24	745.37		741.24		
74	23+05.5	32' LT	A 4	24	745.41	741.18		739.60	740.14
75			NOT USED						
76	23+13	68' RT		12" PRC FES				740.72	
77	23+13	54' RT	A 5	1C	745.20		740.65	740.65	
78	23+53	73' RT	A 4	1C	747.70	737.68	737.68 SW	740.65	
79	22+56	73' RT	A 4						
79A	23+81	44' LT	A 6	1C	745.70	740.04	740.25 EX	740.04	
80	24+05	8' RT	A 4	11V	746.10		742.38		
80A	23+12	53' LT	STR	1C	744.22	739.39 NW	739.45	739.37	739.45
81	24+05	8' LT	A 4	11V	746.10		742.21		742.31
81A	23+12	65' LT		30" PRC FES	GRATE				739.28
82	24+65	32' 44" RT	A 4	24	746.58		742.31		
83	24+65	CL	A 4	8	746.90	741.94	742.07	741.84	741.98
84	25+05	8.67' RT	A 4	11V	746.93		742.72		
85	25+05	8.67' LT	A 4	11V	746.93	742.47		742.57	
86	24+65	32' 44" LT	A 4	24	746.58		741.41	741.51	
87	24+65	45.30' LT	A 5	1C	745.85	740.77 EX	740.77 EX		743.12
88	25+50	34.33' LT	A 4	24	747.53		743.23		
89	25+50	46.60' LT	A 5	1C	747.00	741.30 EX	741.30 EX		743.12
90	26+30	36.11' RT	A 4	24	748.82		744.01	744.10	
91	26+30	10.06' RT	A 4	11V	748.86		743.64	743.74	
92	26+30	CL	A 4	8	748.93		743.45	743.55	
93	26+30	10.06' LT	A 4	11V	748.86		743.26	743.36	
94	26+30	36.11' LT	A 4	24	748.82		742.89	742.99	
95	26+30	47.40' LT	A 5	1C	748.30	742.45 EX	742.45 EX		742.79

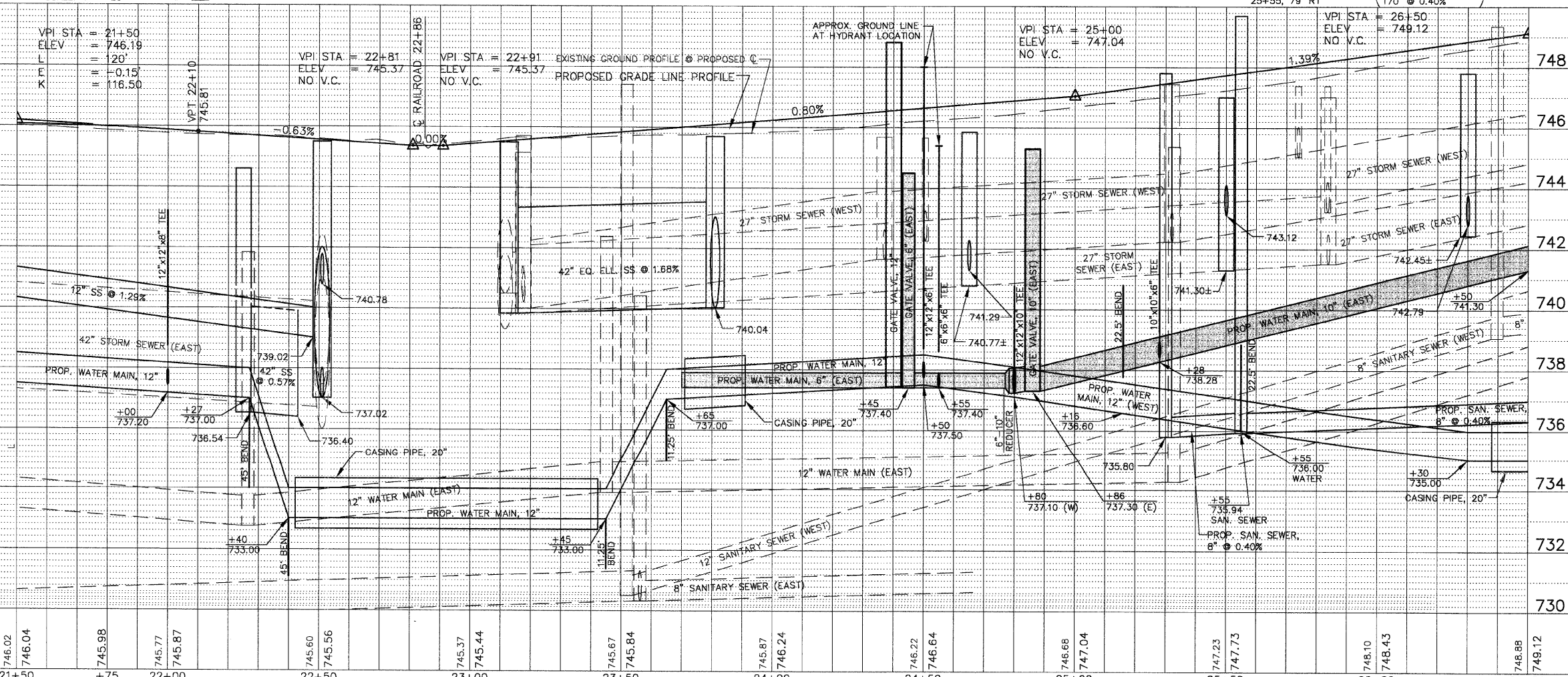
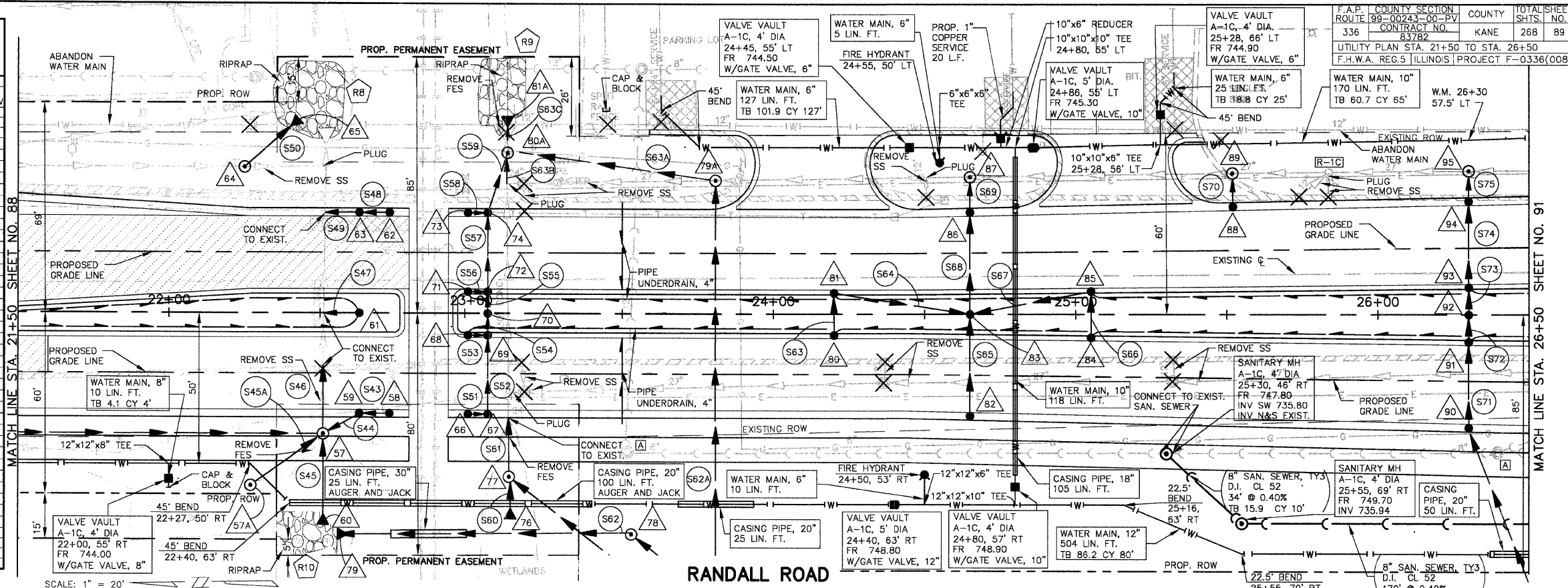
*SEE DRAINAGE STRUCTURE DETAIL

PIPE TABLE STA. 21+50 TO STA. 26+50

PIPE NO.	LOCATION FROM STR #	TO STR #	DESCRIPTION	DIA (IN)	L (FT)	S (%)	TRENCH BACKFILL L (FT)	TRENCH BACKFILL VOL (CY)
S40-S42			NOT USED					
S43	58	59	SS 1 RCCP IV	12	10	1.00	10	1.5
S44	59	57	SS 1 RCCP IV	12	13	1.00	13	5.0
S45	60	57	SS 1 RCCP IV	60	22	1.00	17	22.3
S45A	57A	57	SS 2 RCCP IV "O" RING	12	29	1.00	20	23.5
S46	57	EX	SS 1 RCCP IV	60	21	1.00	21	14.8
S47	61	EX	SS 2 RCCP IV	12	12	1.00		
S48	62	63	SS 1 RCCP IV	12	10	1.00	10	3.6
S49	63	EX	SS 2 RCCP IV	12	12	1.00	12	8.4
S50	64	65	SS 2 RCCP IV	42	16	0.57		
S51	66	67	SS 1 RCCP IV	12	6	1.00	6	0.8
S52	67	69	SS 2 RCCP IV	12	25	1.00	25	4.3
S53	68	69	SS 1 RCCP IV	12	6	1.00	6	0.9
S54	69	70	SS 2 RCCP IV	12	7	1.00	2	0.5
S55	70	72	SS 2 RCCP IV	12	7	1.00	2	0.5
S56	71	72	SS 1 RCCP IV	12	6	1.00	6	0.9
S57	72	74	SS 2 RCCP IV	12	25	1.00	25	5.9
S58	73	74	SS 1 RCCP IV	12	6	1.00	6	0.9
S59	74	80A	SS 2 RCCP IV	12	21	1.00	2	1.6
S60	78	77	SS 1 RCCP IV	12	8	0.50		
S61	77	EX	SS 1 RCCP IV	30	19	1.16	19	5.6
S62	78	79	SS 1 RCCP IV	18	91	0.27		
S62A	408	79A	SS 1 RCCP IV	36	126	0.20	88	50.3
S63	80	81	SS 1 RCCP IV	12	14	0.50	4	0.5
S63A	79A	80A	SS 1 RCCP IV	42	69	0.85		
S63B	EX.	80A	SS 1 RCCP IV	30	6	1.15		
S63C	80A	81A	SS 1 RCCP IV	30	2	1.15		
S64	81	83	SS 2 RCCP IV	12	45	0.60	20	3.9
S65	82	83	SS 2 RCCP IV	12	33	1.00	27	3.6
S66	84	85	SS 1 RCCP IV	12	15	1.00	4	0.5
S67	85	83	SS 2 RCCP IV	12	40	1.00	15	2.0
S68	83	86	SS 2 RCCP IV	12	33	1.00	27	3.6
S69	86	87	SS 2 RCCP IV	12	12	1.00	2	1.3
S70	88	89	SS 1 RCCP IV	12	11	1.00	2	0.7
S71	90	91	SS 1 RCCP IV	15	27	1.00	27	3.3
S72	91	92	SS 2 RCCP IV	15	9	1.00	2	0.5
S73	92	93	SS 2 RCCP IV	15	9	1.00	2	0.5
S74	93	94	SS 2 RCCP IV	15	27	1.00	27	4.6
S75	94	95	SS 2 RCCP IV	15	10	1.00	2	1.5

ROCK OUTLET PROTECTION TABLE STA. 21+50 TO STA. 26+50

NO.	ASSOCIATED STRUCTURE OUTLET NO.	ROCK GRADATION	DEPTH (IN.)	WIDTH 1 (FT.)	WIDTH 2 (FT.)	LENGTH (FT.)	AREA (SQ. YD.)
R8	65	6	32	24	-	26	57
R9	81A	5	28	16	-	22	36
R10	79	4	20	13	-	20	24



F.A.P. COUNTY SECTION	ROUTE 99-00243-00-PV	COUNTY	KANE	TOTAL SHEET	268	89
CONTRACT NO.	83782					
UTILITY PLAN STA.	21+50 TO STA. 26+50					
F.H.W.A. REG. 5 ILLINOIS PROJECT F-	0336(008)					

MATCH LINE STA. 21+50 SHEET NO. 88

MATCH LINE STA. 26+50 SHEET NO. 91

RANDALL ROAD

SCALE: 1" = 20'