

**RANDALL ROAD
 C CURVE #3**

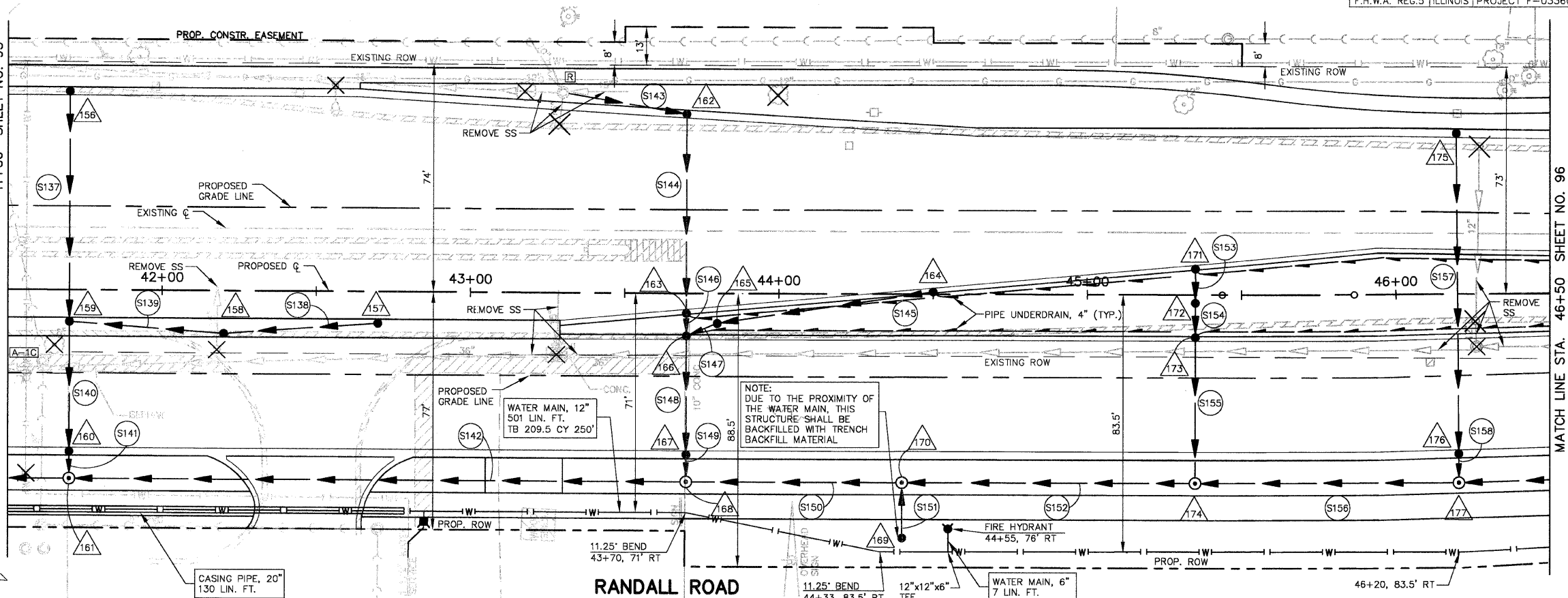
INCLUDED ANGLE = 00°-36'-46"
 RADIUS = 4000.00'
 TANGENT LENGTH = 21.39'
 ARC LENGTH = 42.79'
 CHORD LENGTH = 42.79'
 EXTERNAL SECANT = 0.05'
 MID ORDINATE = 0.06'
 DEGREE OF CURVE = 01°-25'-57"
 PC = 45+43.70
 PT = 45+86.48

DRAINAGE STRUCTURE TABLE STA. 41+50 TO STA. 46+50

NO.	STA.	OFFSET	STRUCTURE TYPE/SIZE	FRAME & GRATE	RIM ELEV EPI/FR	INVERT (N)	INVERT (S)	INVERT (E)	INVERT (W)
156	41+70	63' LT	A 4		24	769.00			765.00
157	42+70	9' RT	A 4		11V	770.39	766.18		
158	42+20	15' RT	A 4		11V	770.12	765.58	765.88	
159	41+70	9' RT	A 4		11V	769.08		764.88	764.58
160	41+70	51' RT	A 4		24	769.30		764.16	764.06
161	41+70	61' RT	A 7		1C	770.60	757.33	757.43	763.93
162	43+70	56.64' LT	A 4		24	772.27	768.60		768.02
163	43+70	5.29' RT	A 4		11V	772.24		767.39	767.29
164	44+50	1.96' LT	A 4		11V	773.81	769.35		
165	43+80	9.69' RT	A 4		8	772.70	768.50	768.60	
168	43+70	15' RT	A 4		11V	772.85	768.39	767.21	766.97
167	43+70	51' RT	A 4		24	772.41		766.60	766.50
168	43+70	61' RT	A 7		1C	773.90	758.55	758.65	766.37
169	44+40	80' RT	3 MOD*	GRATE*		774.93		764.93	
170	44+40	61' RT	A 7		1C	774.70	759.04	760.04	764.72
171	45+35	9.86' LT	A 4		11V	775.47		771.36	
172	45+35	2.67' RT	A 4		8	775.25		771.25	771.15
173	45+35	15' RT	A 4		11V	775.58		771.04	770.94
174	45+35	61' RT	A 6		1C	776.70	760.76	761.76	770.48
175	46+20	50.42' LT	A 4		24	776.85		772.95	
176	46+20	50.42' RT	A 4		24	776.85		771.83	771.73
177	46+20	61' RT	A 5		1C	777.60	762.53	762.63	771.64

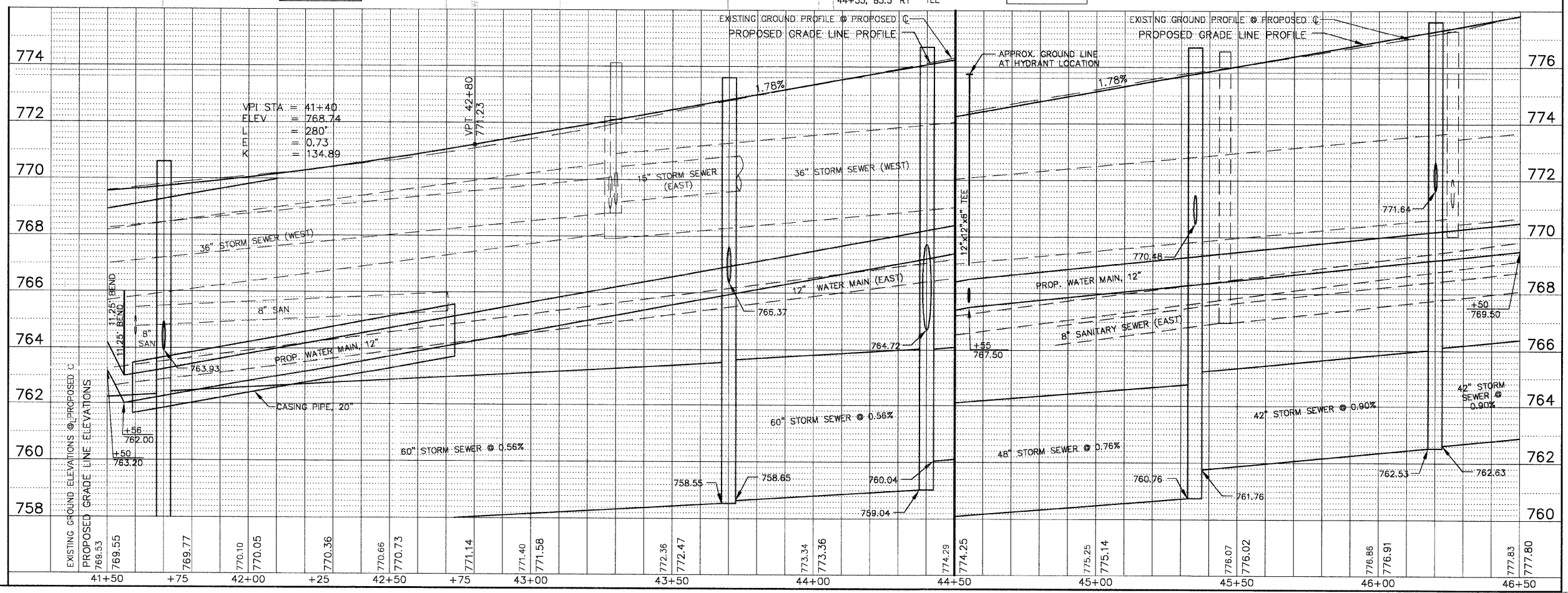
SEE TYPE 3 MODIFIED DRAINAGE STRUCTURE DETAIL

MATCH LINE STA. 41+50
 SHEET NO. 93



MATCH LINE STA. 46+50
 SHEET NO. 96

RANDALL ROAD



PIPE TABLE STA. 41+50 TO STA. 46+50

PIPE NO.	LOCATION FROM STR #	TO STR #	DESCRIPTION	DIA (IN)	L (FT)	S (%)	TRENCH BACKFILL L (FT)	VOL (CY)
S137	156	159	SS 2 RCCP CL IV	12	73	0.44	73	9.6
S138	157	158	SS 2 RCCP CL IV	12	50	1.00	50	6.6
S139	158	159	SS 2 RCCP CL IV	12	50	1.00	50	6.6
S140	159	160	SS 2 RCCP CL IV	12	42	1.00	42	5.5
S141	160	161	SS 2 RCCP CL IV	12	9	1.44	2	1.6
S142	168	161	SS 2 RCCP CL IV	60	200	0.56	200	638.6
S143	EX	162	SS 1 RCCP CL IV	15	40	1.00	40	11.3
S144	162	163	SS 2 RCCP CL IV	15	63	1.00	63	13.4
S145	164	165	SS 2 RCCP CL IV	12	75	1.00	75	13.0
S146	163	166	SS 2 RCCP CL IV	15	8	1.00	8	2.6
S147	165	166	SS 2 RCCP CL IV	12	11	1.00	11	
S148	166	167	SS 2 RCCP CL IV	15	37	1.00	37	
S149	167	168	SS 2 RCCP CL IV	15	9	1.44	2	1.8
S150	170	168	SS 3 RCCP CL IV	60	70	0.56	70	255.0
S151	169	170	SS 2 RCCP CL IV	36	19	1.11	19	31.5
*O RING								
S152	174	170	SS 3 RCCP CL IV	48	95	0.76	95	315.0
S153	171	172	SS 2 RCCP CL IV	12	11	1.00	2	0.3
S154	172	173	SS 2 RCCP CL IV	12	11	1.00	2	0.4
S155	173	174	SS 2 RCCP CL IV	12	46	1.00	41	10.5
S156	177	174	SS 3 RCCP CL IV	42	85	0.90	85	266.4
S157	175	176	SS 2 RCCP CL IV	12	102	1.00	102	13.5
S158	176	177	SS 2 RCCP CL IV	12	9	1.00	2	1.4

SCALE: 1" = 20'