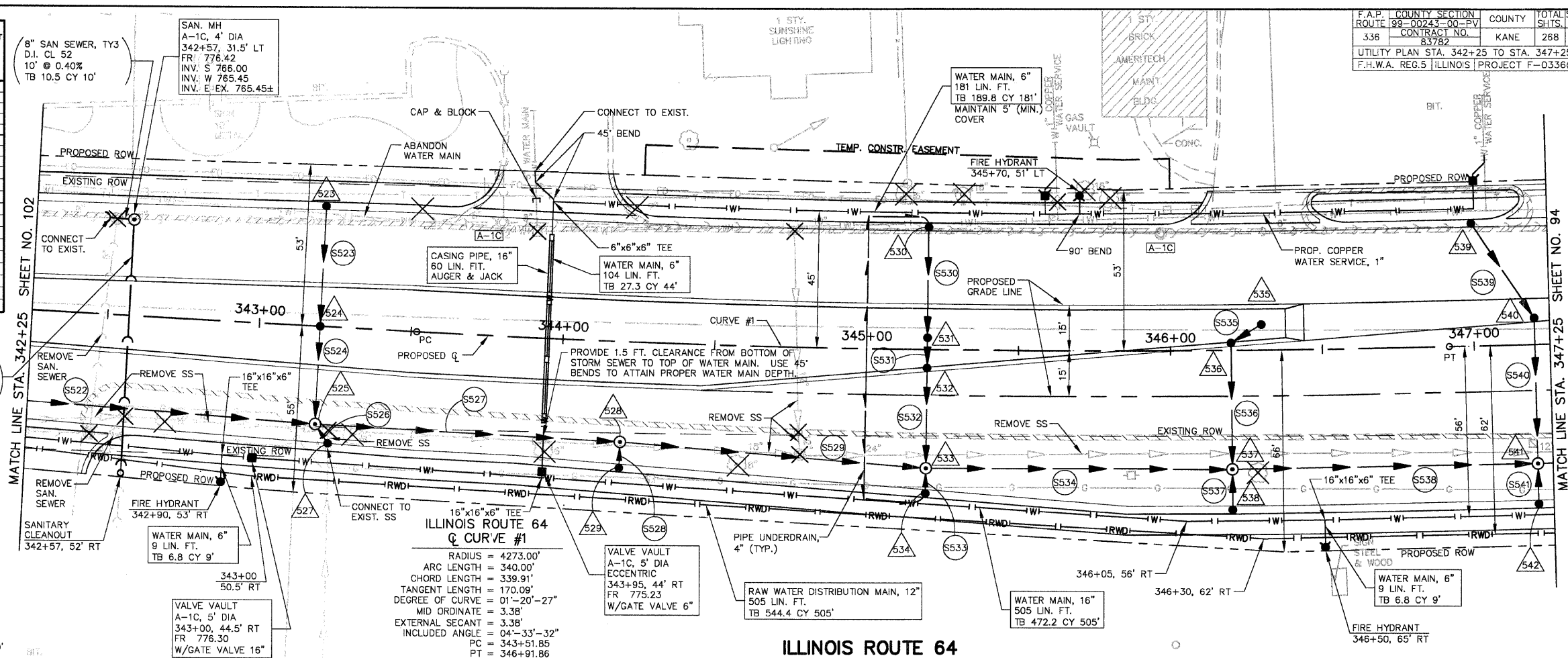


**DRAINAGE STRUCTURE TABLE STA. 342+25 TO STA. 347+25**

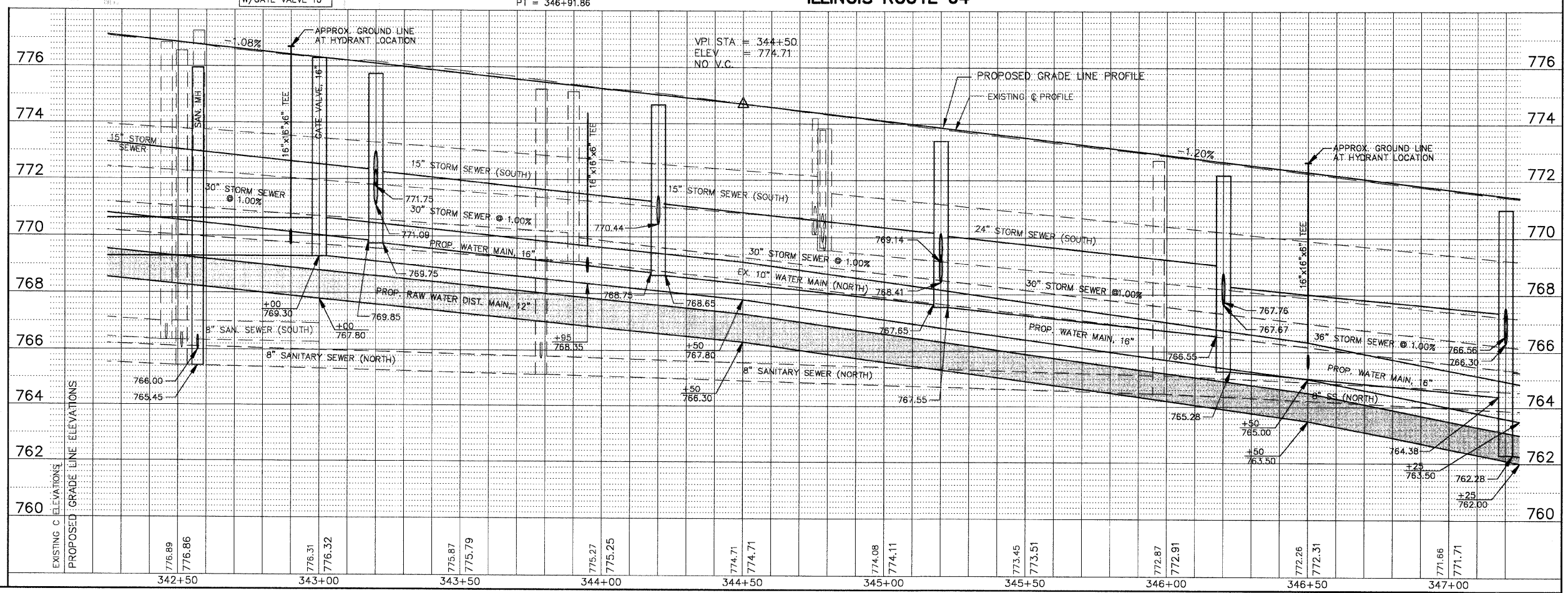
NO.	STA.	OFFSET	STRUCTURE			RIM ELEV EPI/FR	INVERT (N)	INVERT (S)	INVERT (E)	INVERT (W)
			TYPE/SIZE	FRAME & GRATE	INCL					
523	343+20	38.25' LT	A 4"	24	775.63	772.05	772.44			
524	343+20	CL	A 4"	1P	776.04	772.05	771.41			
525	343+20	32.25' RT	A 5"	1C	775.75	771.09	771.75	769.75	769.85	
526 NOT USED										
527	343+24.5	38.36' RT	A 4"	24	775.59	771.63	772.19 EX			
528	344+20	33.0' RT	A 5"	1C	774.67	770.44	770.44	768.85	768.75	
529	344+20	40.37' RT	C 2	24	774.52	770.52				
530	345+20	39.0' LT	A 4"	24	773.39		769.93			
531	345+20	4.0' LT	A 4"	1P	773.67	769.57	768.93			
532	345+20	7.18' RT	A 4"	SPL 1	773.75	768.83	768.73			
533	345+20	38.0' RT	A 5"	1C	773.39	768.41	769.14	767.55	767.65	
534	345+20	45.99' RT	C 2	24	773.22	769.22				
535	346+30	8.5' LT	A 4"	1P	772.29		768.29			
536	346+20	1.31' LT	A 4"	SPL 1	772.43	768.17	768.07			
537	346+20	39.0' RT	A 5"	1C	772.19	767.67	767.76	765.28	765.55	
538	346+20	51.0' RT	C 2	24	771.89	767.89				
539	347+00	39.0' LT	A 4"	24	771.23		767.77			
540	347+20	7.54' LT	A 4"	11V	771.13	767.41	766.77			
541	347+20	39.0' RT	A 5"	1C	770.99	766.30	766.56	762.28	764.38	
542	347+20	51.0' RT	C 2	24	770.69	766.69				



F.A.P. ROUTE	COUNTY SECTION	COUNTY	TOTAL SHEET
336	99-00243-00-PV	KANE	268
UTILITY PLAN STA. 342+25 TO STA. 347+25	CONTRACT NO. 83782		103
F.H.W.A. REG.5 ILLINOIS PROJECT F-0336(OOB)			

**DRAINAGE STRUCTURE TABLE STA. 342+25 TO STA. 347+25**

PIPE NO.	LOCATION FROM TO STR #	DESCRIPTION	DIA (IN)	L (FT)	S (%)	TRENCH BACKFILL	
						L (FT)	VOL (CY)
S522	520	SS 2 RCCP IV	30	120	1.00	120	19.0
S523	523	SS 2 RCCP IV "O" RING	12	39	1.00	39	5.4
S524	524	SS 2 RCCP IV	12	32	1.00	32	4.2
S525 NOT USED							
S526	527	SS 1 RCCP IV "O" RING	15	8	1.00	8	1.0
S527	525	SS 2 RCCP IV "O" RING	30	100	1.00	100	15.8
S528	529	SS 1 RCCP IV "O" RING	12	8	1.00	8	1.1
S529	528	SS 2 RCCP IV	30	100	1.00	100	15.8
S530	530	SS 2 RCCP IV	12	36	1.00	36	4.8
S531	531	SS 2 RCCP IV	12	10	1.00	10	1.3
S532	532	SS 2 RCCP IV	12	32	1.00	32	4.2
S533	534	SS 1 RCCP IV "O" RING	12	8	1.00	8	1.1
S534	533	SS 2 RCCP IV	30	100	1.00	100	12.4
S535	535	SS 1 RCCP IV	12	12	1.00	12	1.6
S536	536	SS 2 RCCP IV	12	40	1.00	40	5.3
S537	538	SS 2 RCCP IV "O" RING	12	13	1.00	13	1.7
S538	537	SS 2 RCCP IV	36	100	1.00	100	24.4
S539	539	SS 1 RCCP IV	12	36	1.00	36	4.8
S540	540	SS 2 RCCP IV	12	47	1.00	47	8.1
S541	542	SS 2 RCCP IV "O" RING	12	13	1.00	13	1.7



EXISTING C ELEVATIONS	776.89	776.86	776.31	776.32	775.87	775.79	775.27	775.25	774.71	774.71	774.08	774.11	773.45	773.51	772.87	772.91	772.26	772.31	771.66	771.71		
PROPOSED GRADE LINE ELEVATIONS	766.00	765.45	769.30	769.80	769.85	769.75	768.75	768.65	767.75	767.85	767.80	767.55	767.76	767.67	766.55	766.30	765.28	765.00	763.50	763.50	762.28	762.00