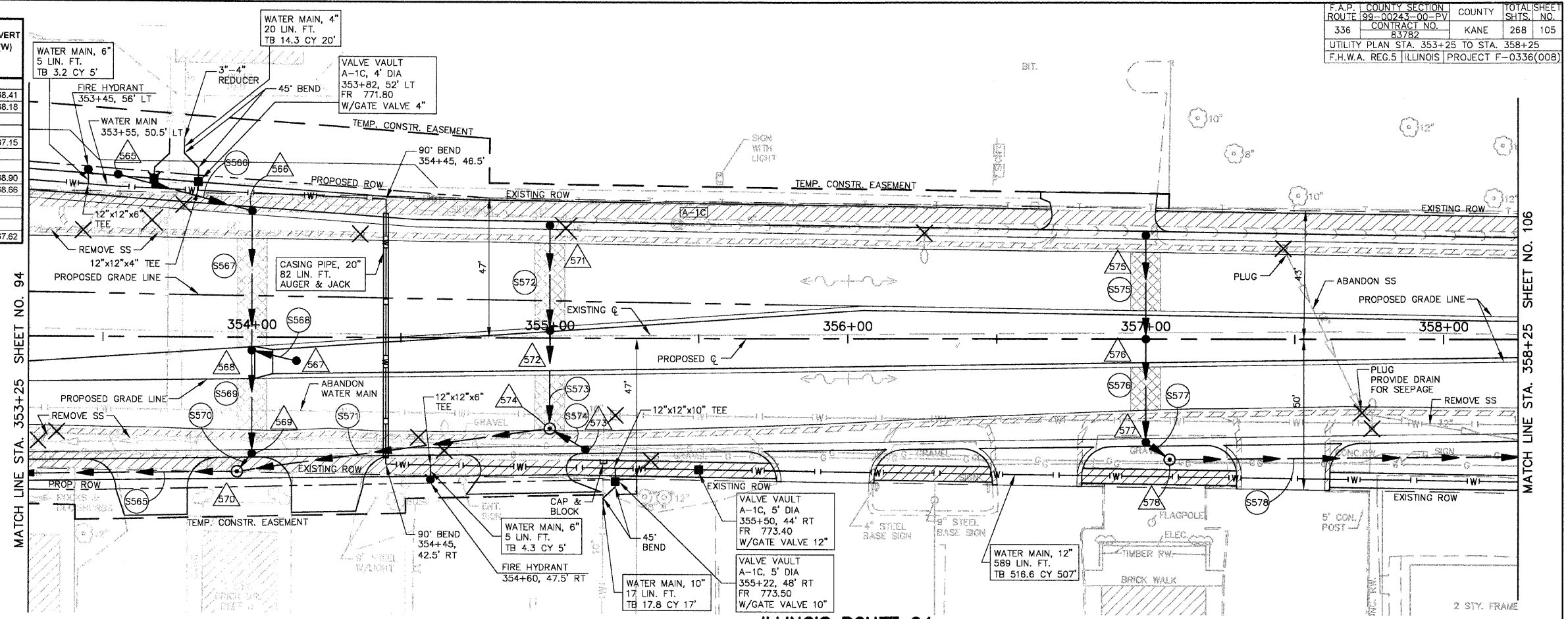


DRAINAGE STRUCTURE TABLE STA. 353+25 TO STA. 358+25

NO.	STA.	OFFSET	STRUCTURE TYPE/SIZE	FRAME & GRATE	RIM ELEV EPI/FR	INVERT (N)	INVERT (S)	INVERT (E)	INVERT (W)
565	353+55	54.5' LT	C 2	1C	771.36	768.92 EX.		768.62	
566	354+00	41.14' LT	A 4	24	771.41		768.31		768.41
567	354+15	7.8' RT	A 4	1P	772.14				768.18
568	354+00	3.14' RT	A 4	11V	771.72	768.11	768.01	768.11	
569	354+00	37.73' RT	A 4	24	771.49	767.85	767.49		
570	353+95	45.0' RT	A 4	1C	771.90	767.41		767.40	767.15
571	355+00	36.45' LT	A 4	24	772.47		769.47		
572	355+00	3.76' LT	A 4	SPL1	772.82	769.32	769.22		
573	355+13	36.05' RT	A 4	24	772.57				768.90
574	355+00	30.25' RT	A 4	1C	772.59	769.07		768.76	768.66
575	357+10	33.35' LT	A 4	24	772.21		768.21		
576	357+10	CL	A 4	1P	772.73	768.06	767.96		
577	357+10	33.13' RT	A 4	24	772.21	767.81		767.71	
578	357+10	38.0' RT	A 4	1C	772.60		767.52	767.62	

LOCATE TO INTERCEPT EXISTING 6" STORM SEWER



F.A.P. COUNTY SECTION	ROUTE 99-00243-00-PV	COUNTY	TOTAL SHEET
336	CONTRACT NO. 83782	KANE	268 105
UTILITY PLAN STA. 353+25 TO STA. 358+25			
F.H.W.A. REG.5 ILLINOIS PROJECT F-0336(008)			

MATCH LINE STA. 353+25 SHEET NO. 94

MATCH LINE STA. 358+25 SHEET NO. 106

ILLINOIS ROUTE 64

SCALE: 1" = 20'

DRAINAGE STRUCTURE TABLE STA. 353+25 TO STA. 358+25

PIPE NO.	LOCATION FROM STR #	TO STR #	DESCRIPTION	DIA (IN)	L (FT)	S (%)	BACKFILL L (FT)	VOL (CY)
S565	570	564	SS 2 RCCP IV	15	95	1.47	95	35.6
S566	565	566	SS 1 RCCP IV "O" RING	12	46	0.46	46	7.0
S567	566	568	SS 1 RCCP IV "O" RING	12	45	0.44	45	5.9
S568	567	568	SS 1 RCCP IV	12	15	0.47	15	2.0
S569	568	569	SS 1 RCCP IV	12	35	0.46	35	4.6
S570	569	570	SS 2 RCCP IV	12	8	1.00	8	2.4
S571	574	570	SS 2 RCCP IV "O" RING	12	106	1.19	106	18.4
S572	571	572	SS 1 RCCP IV	12	34	0.44	34	4.5
S573	572	574	SS 1 RCCP IV	12	33	0.45	33	4.3
S574	573	574	SS 1 RCCP IV "O" RING	12	14	1.00	14	2.3
S575	575	576	SS 2 RCCP IV	12	34	0.44	34	4.5
S576	576	577	SS 2 RCCP IV	12	34	0.44	34	4.5
S577	577	578	SS 2 RCCP IV "O" RING	12	10	0.90	10	3.8
S578	578	582	SS 2 DI CL S2	12	157	0.90	47	14.1

