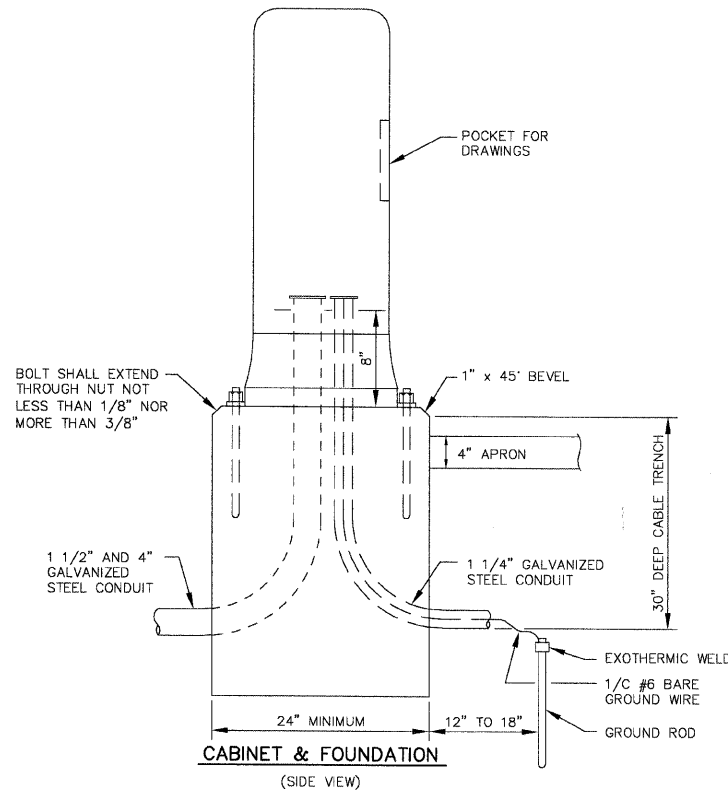
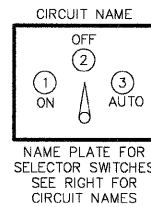
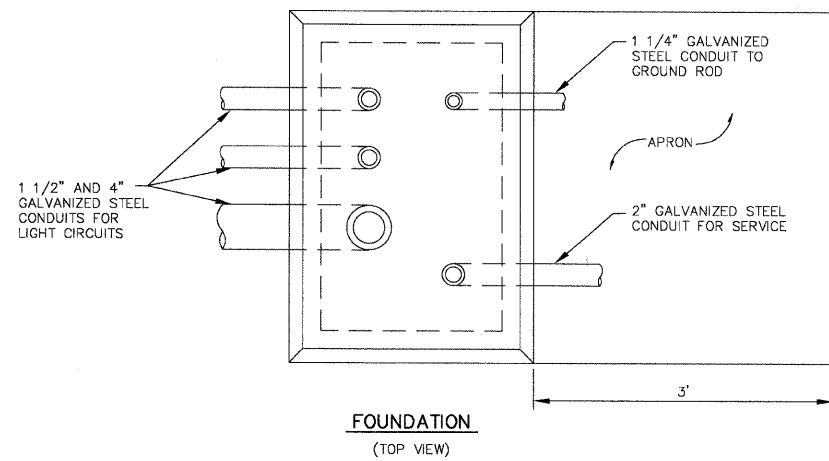
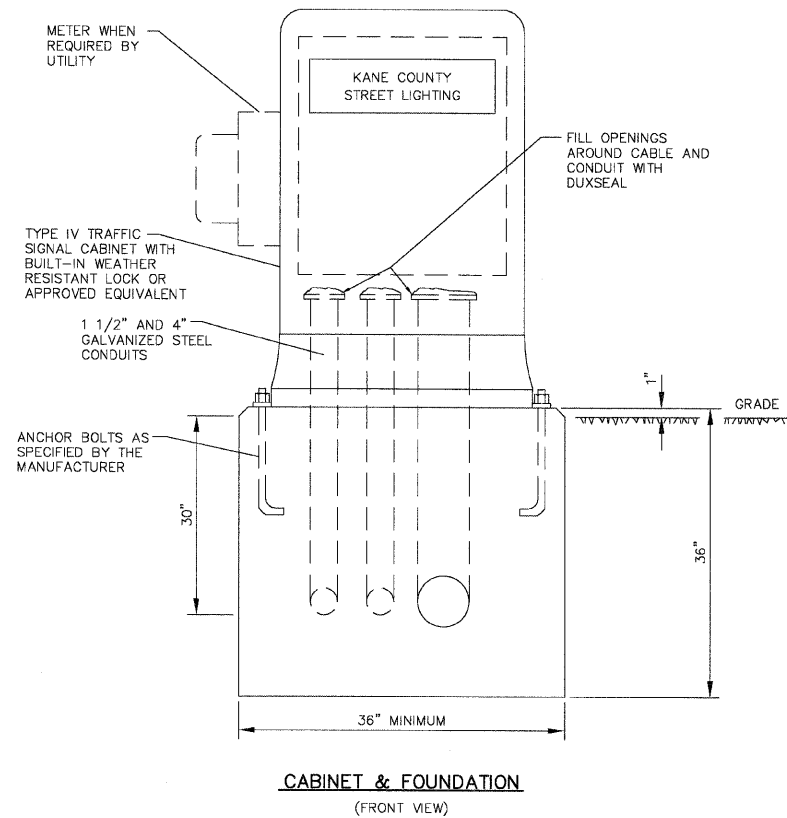


F.A.P. COUNTY SECTION	ROUTE 99-00243-00-PV	COUNTY	TOTAL SHEET
336	CONTRACT NO. B3782	KANE	268
CONTROL INSTALLATION, SPECIAL DETAIL			148
F.H.W.A. REG.5 ILLINOIS PROJECT F-0336(00B)			

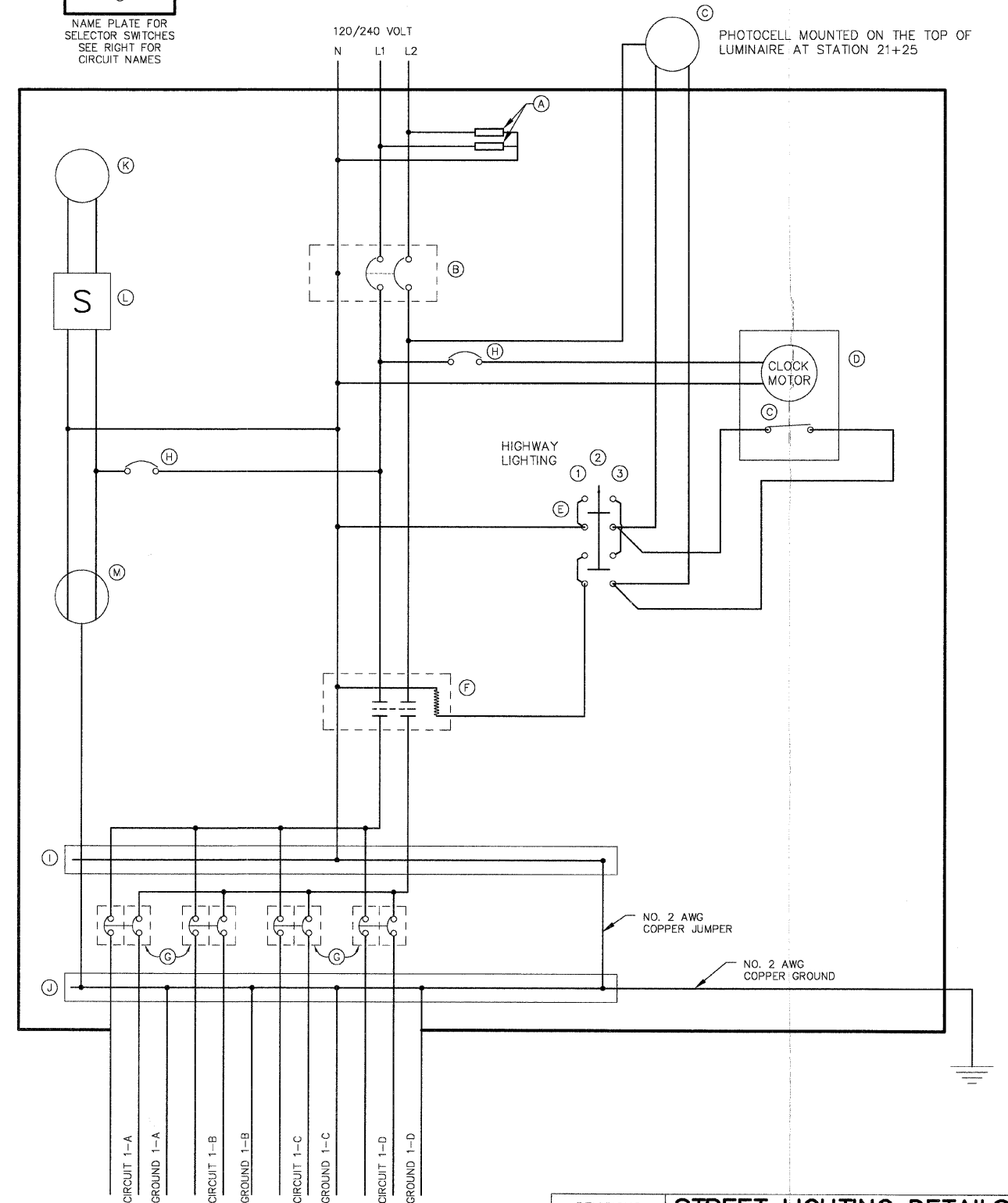


NOTE: CONCRETE FOUNDATION SHALL CONFORM TO STANDARD 878001 FOR TYPE D FOUNDATION.



ITEMS

- (A) LIGHTNING ARRESTERS
- (B) MAIN CIRCUIT BREAKER - MOLDED CASE, THERMAL MAGNETIC, 2-POLE, 600V. A.C., 100 AMP FRAME, 225A. NON-INTERCHANGABLE TRIP, BOLT-ON TYPE, INTERRUPTING CAPACITY OF NOT LESS THAN 22,000 RMS SYMMETRICAL AMPERES AT 480V.
- (C) PHOTOCELL
- (D) SINGLE CHANNEL ASTRONOMICAL CLOCK
- (E) SELECTOR SWITCH
- (F) CONTROL CONTACTOR; 100 AMP. TWO POLE
- (G) BRANCH CIRCUIT BREAKER, MOLDED CASE, THERMAL MAGNETIC, 2-POLE, 240V. BOLT-IN TYPE 30A. WITH AN INTERRUPTING RATING OF NOT LESS THAN 22,000 RMS SYMMETRICAL AMPERES AT 240V.
- (H) CIRCUIT BREAKER, MOLDED CASE, THERMAL MAGNETIC, 1-POLE, 120V., BOLT-ON TYPE, 20A. WITH AN INTERRUPTING RATING OF NOT LESS THAN 10,000 RMS SYMMETRICAL AMPERES AT 120V.
- (I) NEUTRAL BUS BAR
- (J) GROUND BUS BAR
- (K) CABINET LIGHT, 60 WATT INCANDESCENT
- (L) CABINET LIGHT SWITCH
- (M) GFCI DUPLEX OUTLET



REVISIONS	
NAME	DATE
PER BEQ	10-7-04
REVIEW	
PER BEQ	12-29-04
REVIEW	

STREET LIGHTING DETAILS

CONTROL INSTALLATION, SPECIAL CONTROLLER 1

RANDALL ROAD

SCALE: NONE DRAWN BY: JMH
DATE: 5-26-04 CHECKED BY: DAY