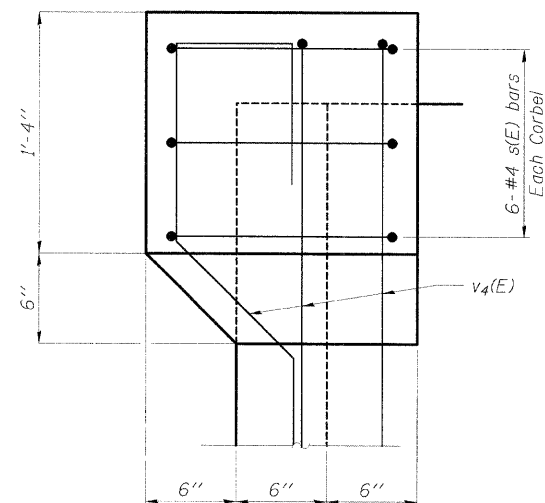
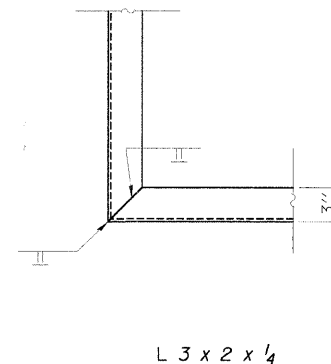


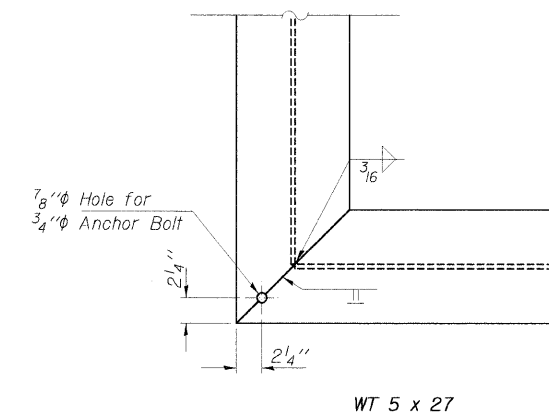
CORBEL DETAIL



SECTION A-A

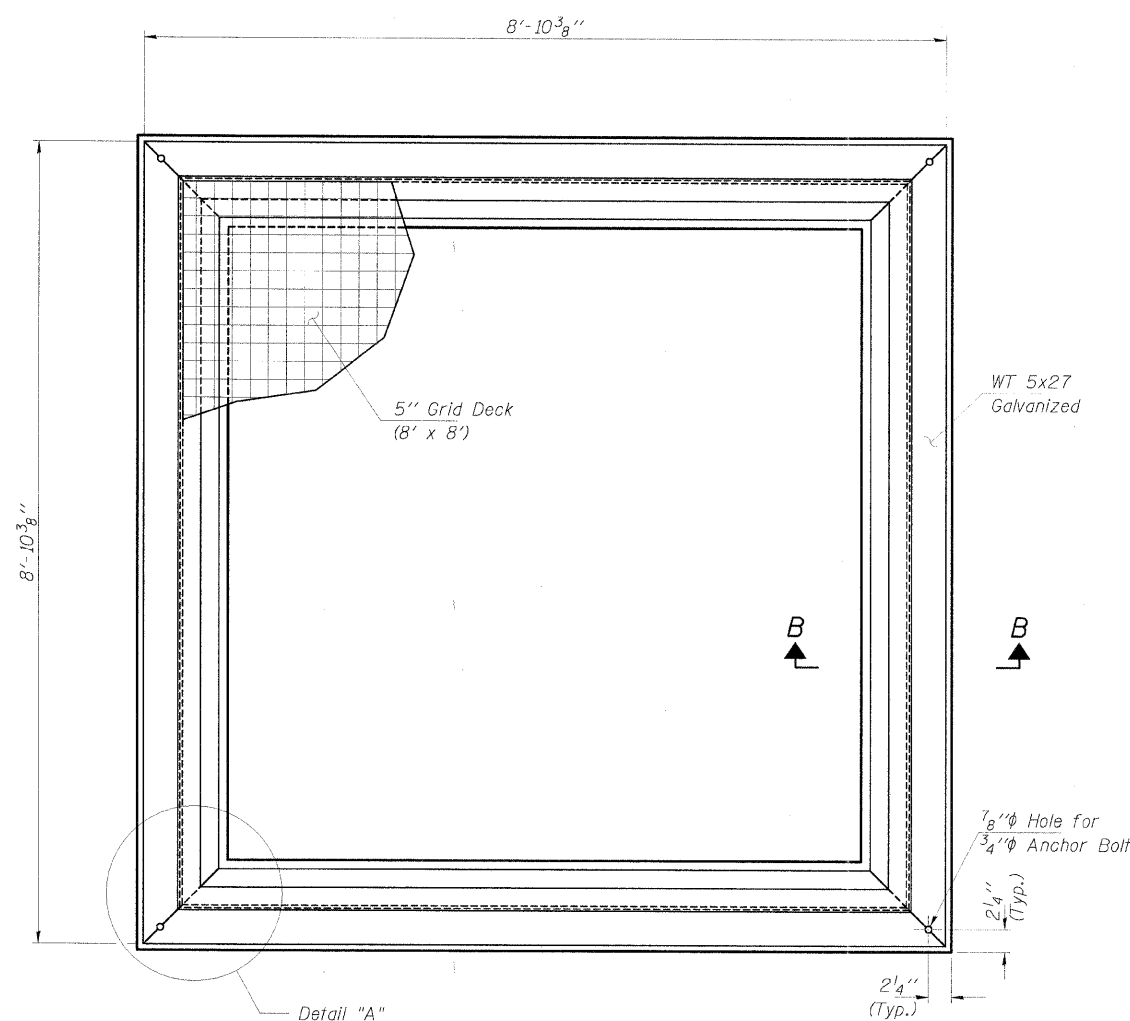


L 3 x 2 x 1/4

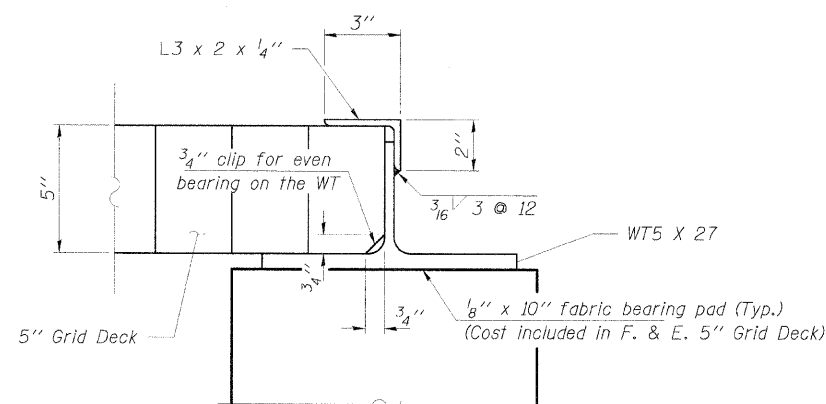


WT 5 x 27

DETAIL "A"



GRID DECK ASSEMBLY



SECTION B-B

MIN. BAR LAP
#4 = 1'-4"

BILL OF MATERIAL

BAR	NO.	SIZE	LENGTH	SHAPE
h(E)	18	#5	7'-8"	—
h1(E)	6	#4	10'-3"	—
h2(E)	4	#4	7'-7"	—
h3(E)	8	#4	3'-7"	—
h4(E)	14	#4	2'-3"	—
h5(E)	8	#5	7'-0"	—
h6(E)	8	#5	3'-7"	—
h7(E)	8	#5	9'-3"	—
h8(E)	8	#5	7'-10"	—
s(E)	24	#4	4'-5"	□
v(E)	4	#4	5'-11"	—
v1(E)	16	#4	5'-5"	—
v2(E)	11	#4	9"	—
v3(E)	1	#4	2'-6"	—
v4(E)	16	#4	4'-10"	—
Concrete Structures			Cu. Yd.	3.6
Reinf. Bars, Epoxy Coated			Pounds	680
Furnishing & Erecting 5" Grid Deck			Sq. Ft.	64
Cast Iron Steps			Each	3

Notes:
 Cast of the WT, angle, anchor bolts, and fabric bearing pad, shall be included in the price of the "F. & E. 5" Grid Deck".
 The grid deck shall conform to the requirements of A.S.T.M. A-709 Grade 50 material. The section shall have a minimum section modulus of 4.2 in³/ft (top and 5.2 in³/ft (bottom).
 Steel Angles shall conform to the requirements of A.A.S.H.T.O. designation M-270 Grade 36. WT shall conform to requirements of A.A.S.H.T.O. Designation M-270 Grade 50.
 Bolts, cap screws, and nuts shall conform to the requirements of A.S.T.M. designation A-307 except for high strength bolts, nuts and washers noted which shall conform to A.A.S.H.T.O. designation M-164.
 All bolts, nuts, cap screws, washers and lock washers shall be galvanized in accordance with A.A.S.H.T.O. designation M-232.
 All WT sections, grid deck, anchor devices and angles shall be galvanized after shop fabrication in accordance with A.S.T.M. A-385 and A.A.S.H.T.O. M-111. Galvanized members shall not be painted.
 All field drilled holes shall be coated with an approved zinc rich paint before erection.

HLR
 Rice, Berry and Associates
 A Division of Hampton, Lenzini and Renwick, Inc.
 Civil & Structural Engineers
 801 S. Durkin Drive
 Springfield, Illinois 62704
 217-546-3400
 P.O. Box 1036
 DuQuoin, Illinois 62832
 618-790-4637
 Account Number 03-05-0181-1
 Date: 01-11-05
 DESIGNED: S.W.S. CHECKED: S.W.M. DRAWN: D.B.

DRAINAGE STRUCTURE SPECIAL
SECTION 99-00243-00-PV
RANDALL ROAD
KANE COUNTY
STATION 23+12