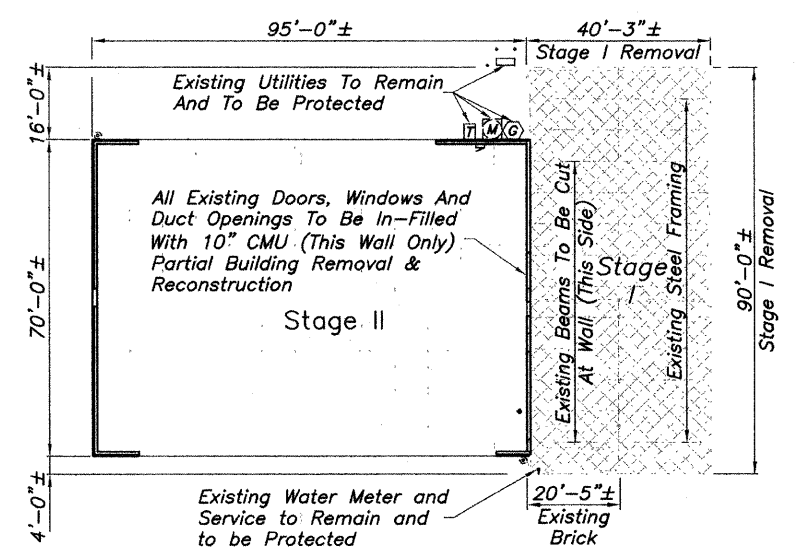
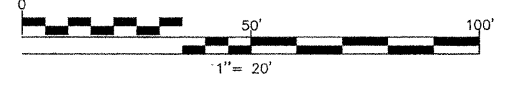
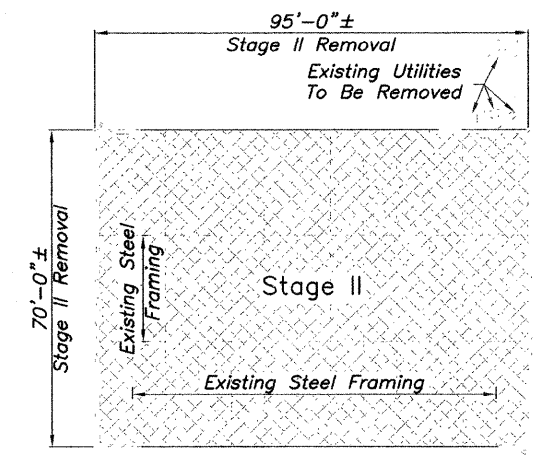
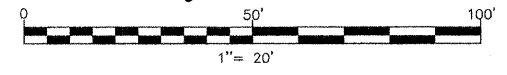


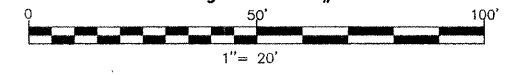
**EXISTING BUILDING 205 - PLAN VIEW**



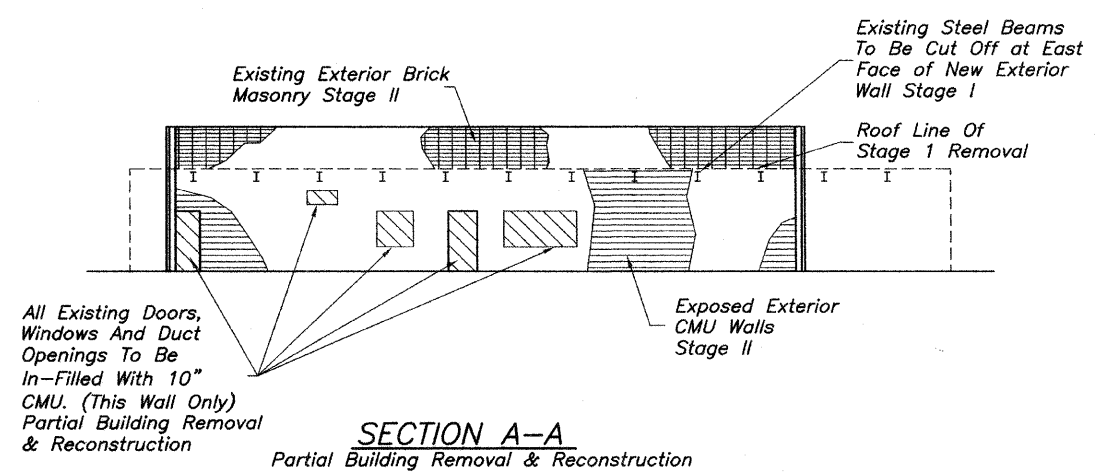
**STAGE I REMOVAL**  
Partial Building Removal & Reconstruction



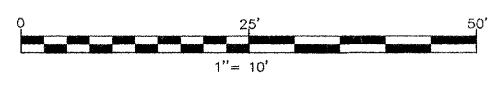
**STAGE II REMOVAL**  
Building Removal #2



A  
A



**SECTION A-A**  
Partial Building Removal & Reconstruction



**LEGEND**

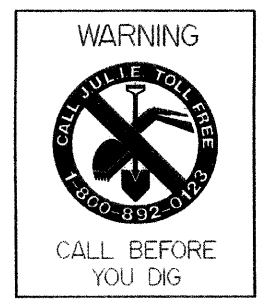
- Area Of Removal
- Area Of In-Fill

**NOTES**

See Special Provision Building Removal - Case IV (No Asbestos) (BDE)

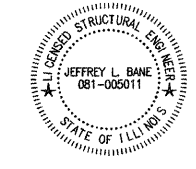
**BILL OF MATERIAL**

ITEM	UNIT	TOTAL
Partial Building Removal & Reconstruction	L Sum	1
Building Removal #2	L Sum	1



G:\Users\jlb\Documents\BOS BARR.dwg 02/09/05 09:52 pm.plt

ILLINOIS STRUCTURAL NO. 5011  
FER # 9 2005



Expires 11-30-06

**HLR**  
Rice, Berry and Associates  
A Division of Hampton, Lenzini and Renwick, Inc.  
Civil & Structural Engineers  
801 S. Durkin Drive  
Springfield, Illinois 62704  
217-546-3400  
P.O. Box 1036  
DuQuoin, Illinois 62832  
618-790-4637  
Account Number 03-05-01811  
DATE: 01/05/05  
DESIGNED: J.L.B. CHECKED: J.L.B. DRAWN: P.J.L.

**STAGED REMOVAL BUILDING 205**  
SECTION 99-00243-00-PV  
PARTIAL / RECONSTRUCTION / FINAL BUILDING REMOVAL  
205 N. RANDALL ROAD  
KANE COUNTY