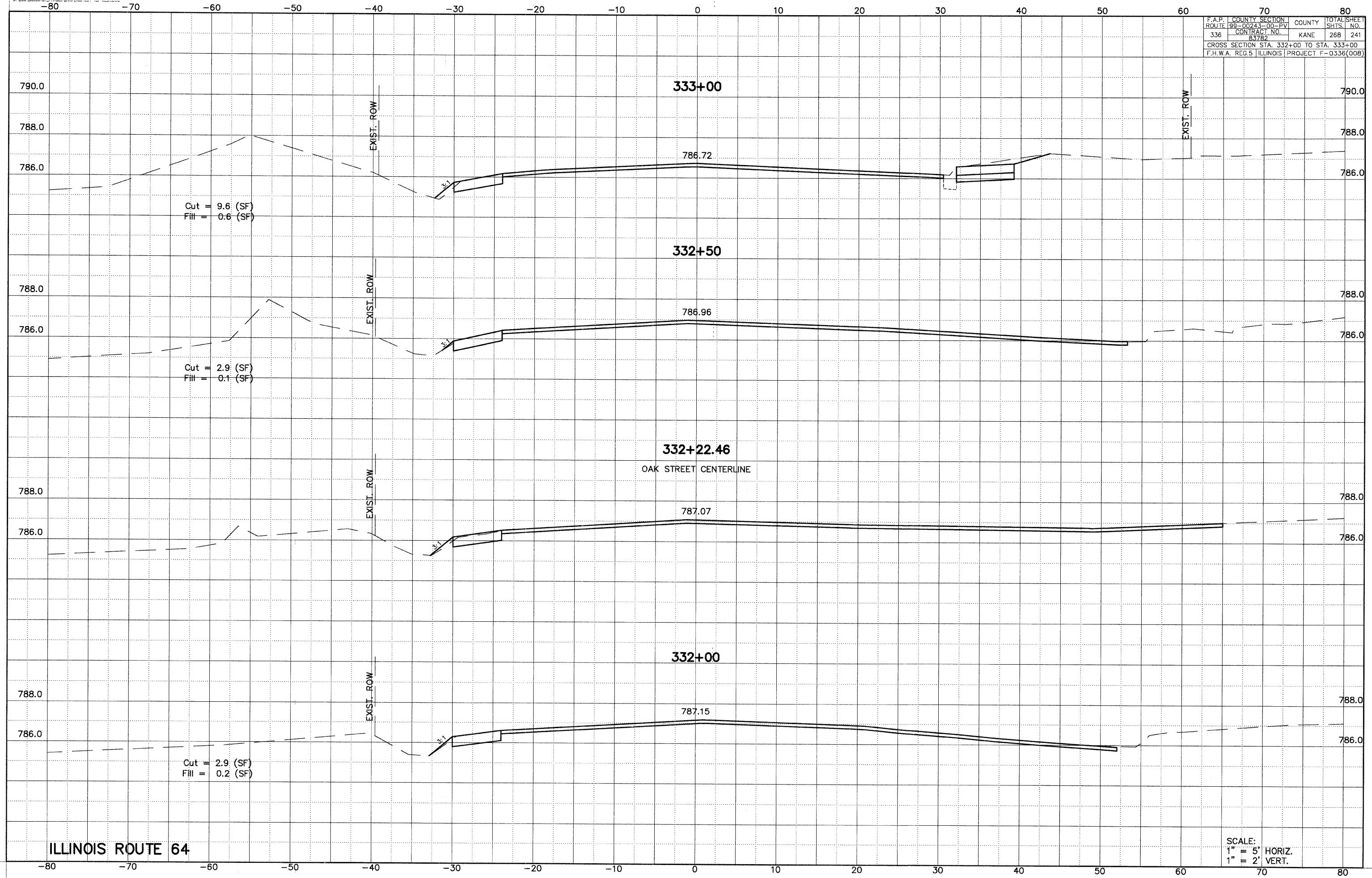


F.A.P. ROUTE	COUNTY SECTION	COUNTY	TOTAL SHEETS
336	99-00243-00-PV	KANE	268
CONTRACT NO. 83782			241
CROSS SECTION STA. 332+00 TO STA. 333+00			
F.H.W.A. REG. 5 ILLINOIS PROJECT F-0336(008)			



SCALE:
 1" = 5' HORIZ.
 1" = 2' VERT.