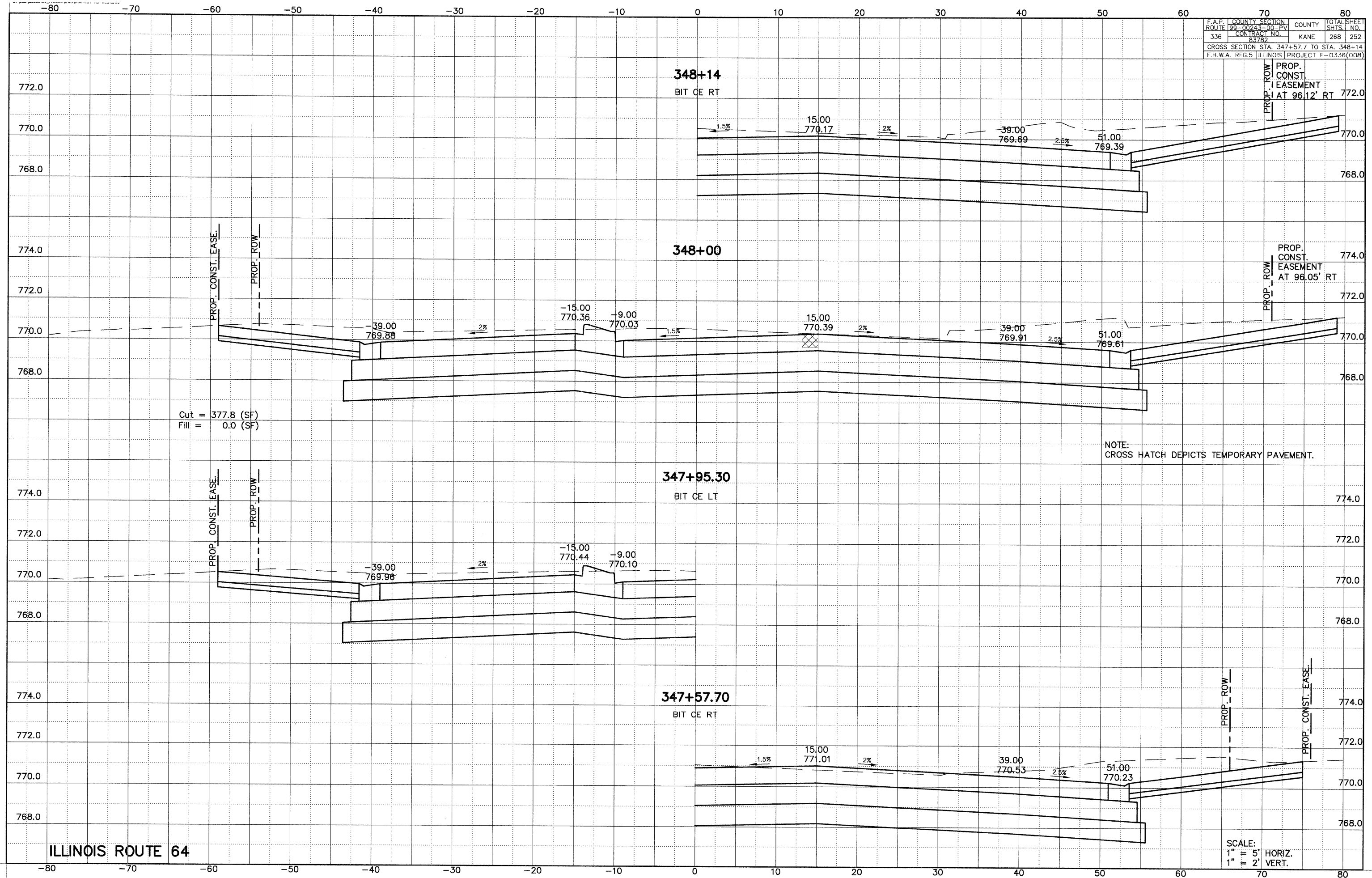


F.A.P. COUNTY SECTION	ROUTE 98-00243-00-PV	CONTRACT NO.	83782	COUNTY	KANE	TOTAL SHEET	268	SHEET NO.	252
CROSS SECTION STA. 347+57.7 TO STA. 348+14						PROJECT F-0336(00B)			



Cut = 377.8 (SF)
 Fill = 0.0 (SF)

NOTE:
 CROSS HATCH DEPICTS TEMPORARY PAVEMENT.

ILLINOIS ROUTE 64

SCALE:
 1" = 5' HORIZ.
 1" = 2' VERT.