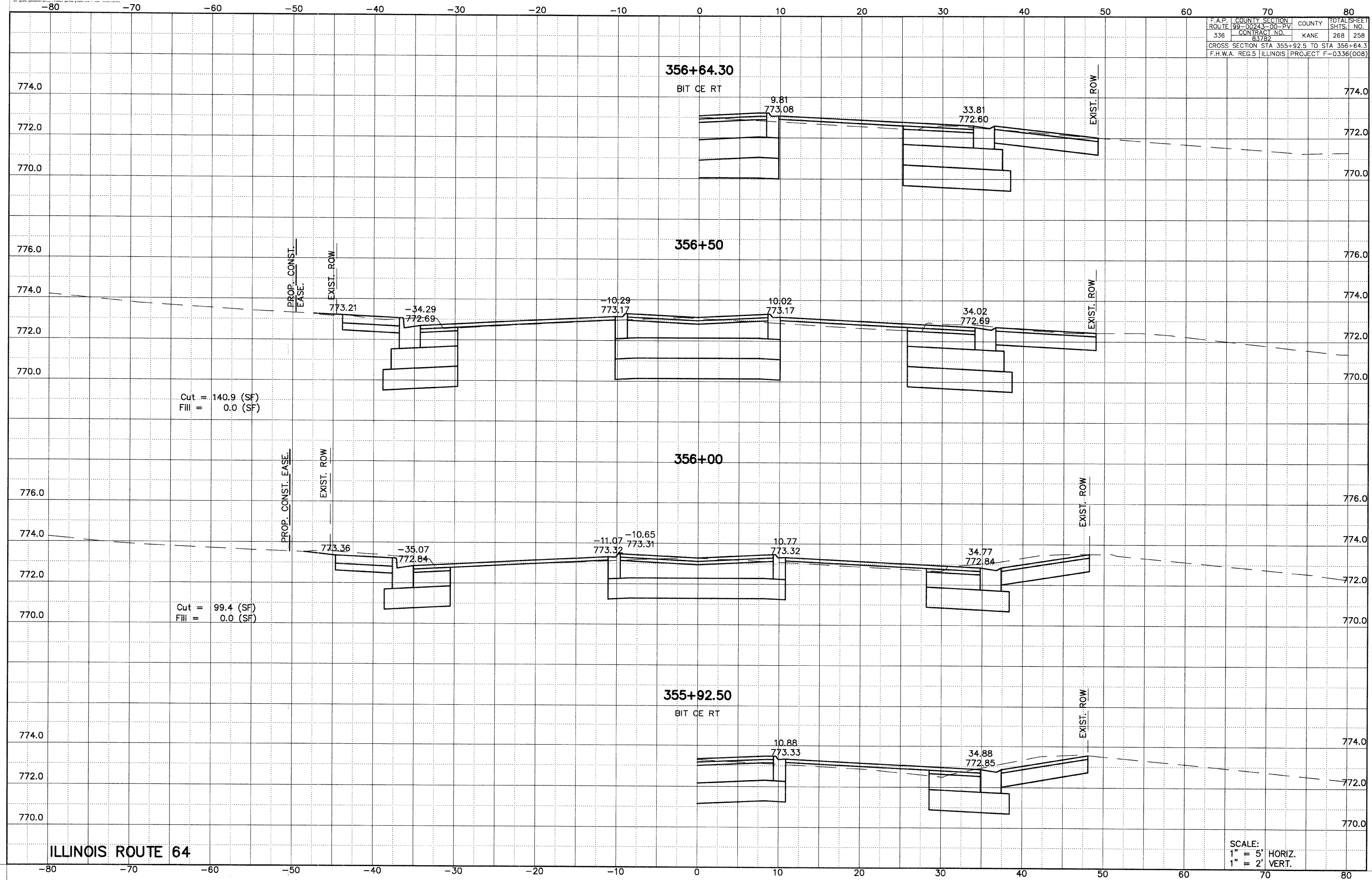


F.A.P. COUNTY SECTION	COUNTY	TOTAL SHEET
ROUTE 99-00243-00-PV	KANE	268 258
336 CONTRACT NO. 83782		
CROSS SECTION STA 355+92.5 TO STA 356+64.3		
F.H.W.A. REG.5 ILLINOIS PROJECT F-0336(008)		



ILLINOIS ROUTE 64

SCALE:
1" = 5' HORIZ.
1" = 2' VERT.