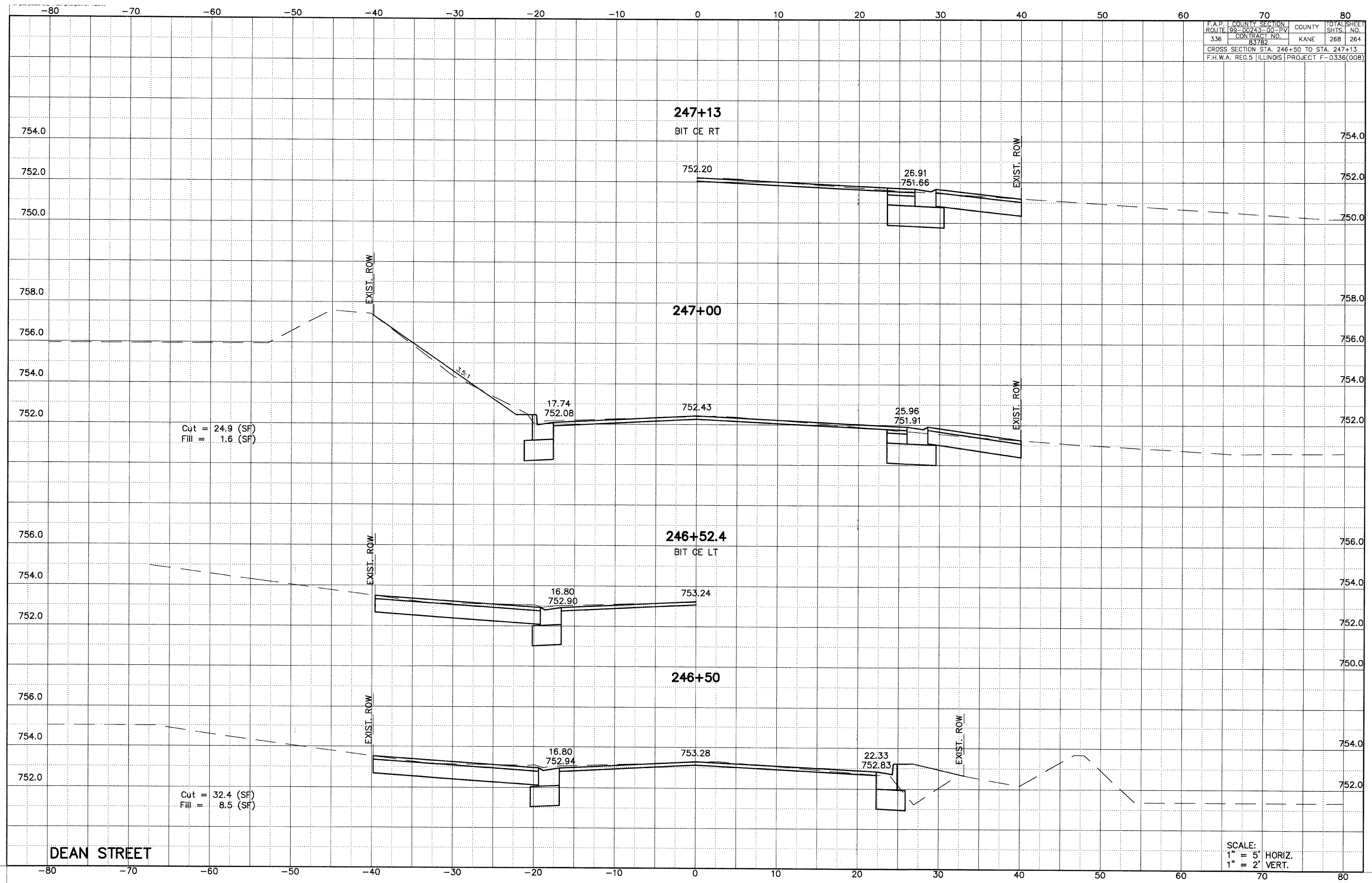


F.A.P. COUNTY SECTION	ROUTE 195-00243-00-PV	COUNTY	TOTAL SHEET
336	CONTRACT NO. 83782	KANE	268 264
CROSS SECTION STA. 246+50 TO STA. 247+13			
F.H.W.A. REG.5 ILLINOIS PROJECT F-0336(008)			



Cut = 24.9 (SF)
Fill = 1.6 (SF)

Cut = 32.4 (SF)
Fill = 8.5 (SF)

DEAN STREET

SCALE:
1" = 5' HORIZ.
1" = 2' VERT.