

F.A.U. RTE.	SECTION	COUNTY	TOTAL SHEETS	SHEET NO.
2802	05-00026-00-SW	COOK	9	1
STA. 10+50		TO STA. 36+47		
FED. ROAD DIST. NO.		ILLINOIS	FED. AID PROJECT	
CONTRACT NO. 83804				

**INDEX TO SHEETS:**

SHEET NO.	DESCRIPTION
1.	COVER SHEET
2.	GENERAL NOTES - SUMMARY OF QUANTITIES
3.	TYPICAL SECTIONS
4-6.	SIDEWALK PLAN
7.	CURB OR CURB AND GUTTER REMOVAL AND REPLACEMENT
8.	TRAFFIC CONTROL AND PROTECTION FOR SIDE ROADS, INTERSECTIONS AND DRIVEWAYS
9.	CROSS SECTIONS

STATE OF ILLINOIS  
DEPARTMENT OF TRANSPORTATION  
DIVISION OF HIGHWAYS

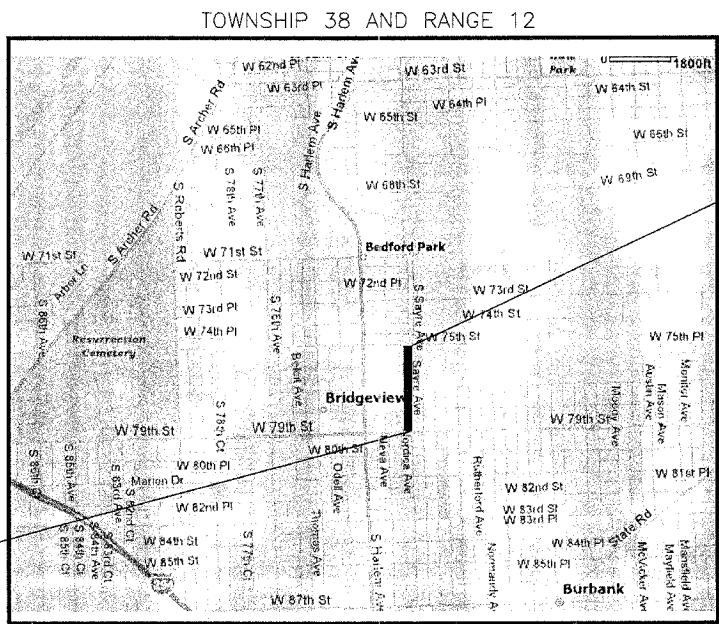
# PLANS FOR PROPOSED FEDERAL AID HIGHWAY

F.A.U. ROUTE 2802 (SAYRE AVENUE)  
SIDEWALK CONSTRUCTION 79TH STREET TO 75TH STREET  
SECTION NO. 05-00026-00-SW  
PROJECT NO: CMM-8003(497)  
JOB NO: C-91-163-05  
VILLAGE OF BEDFORD PARK, COOK COUNTY



**LIST OF STATE STANDARDS:**

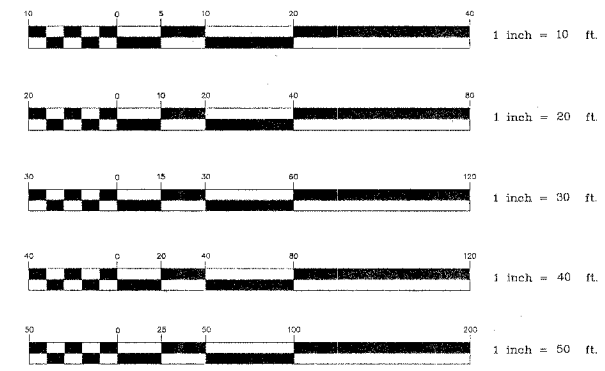
STANDARD NO.	DESCRIPTION
000001-04:	STANDARD SYMBOLS, ABBREVIATIONS AND PATTERNS
424001-03:	SIDEWALK RAMPS ACCESSIBLE TO THE DISABLED
606001-02:	CONCRETE CURB, AND COMBINATION CONCRETE CURB AND GUTTER
702001-05:	TRAFFIC CONTROL DEVICES
701501-03:	URBAN LANE CLOSURE, 2L, 2W, UNDIVIDED
701801-03:	LANE CLOSURE, MULTILANE 1W OR 2W CROSSWALK OR SIDEWALK CLOSURE



PROJECT ENDS  
AT STA. 36+47

PROJECT BEGINS  
AT STA. 10+50

**TRAFFIC DATA**  
ADT = 10,000  
SPEED LIMIT = 30 MPH



FULL SIZE PLANS HAVE BEEN PREPARED USING STANDARD ENGINEERING SCALES. REDUCED SIZED PLANS WILL NOT CONFORM TO STANDARD SCALES. IN MAKING MEASUREMENTS ON REDUCED PLANS, THE ABOVE SCALES MAY BE USED

J.U.L.I.E.  
JOINT UTILITY LOCATION FOR EXCAVATION  
1-800-892-0123

CONTRACT NO. 83804

GROSS LENGTH OF PROJECT 2598 FEET (0.49 MILES)  
NET LENGTH OF PROJECT 2598 FEET (0.49 MILES)

STATE OF ILLINOIS  
DEPARTMENT OF TRANSPORTATION  
DIVISION OF HIGHWAYS

APPROVED 6/1 20 05  
*David R. Pandy* LOCAL AGENCY OFFICIAL

APPROVED 6/2 20 05  
*Chapman* ENGINEER OF LOCAL ROADS AND STREETS

APPROVED June 6, 20 05  
*Diana O'Keefe/AP* DISTRICT ENGINEER

**hbe Hoeffler-Butler Engineering, Inc.**  
Consulting Civil Engineers - Land Surveyors  
PROFESSIONAL DESIGN FIRM LICENSE NO. 104-000819  
6714 S. ROBERTS ROAD HECKY HILLS, ILLINOIS 60457  
(708) 599-8980 FAX (708) 599-8790

STEPHEN A. LEIBER  
38352 REGISTERED PROFESSIONAL ENGINEER OF ILLINOIS  
EXPIRES 11-30-05  
*Stephen A. Leiber*  
SIGNATURE  
6/1/05  
DATE

FEDERAL-AID DESIGN ENGINEER: ABIGAIL BRINKS (847) 705-4233  
CONSULTANT: HOFFERLE-BUTLER ENGINEERING, INC. (708) 599-8980