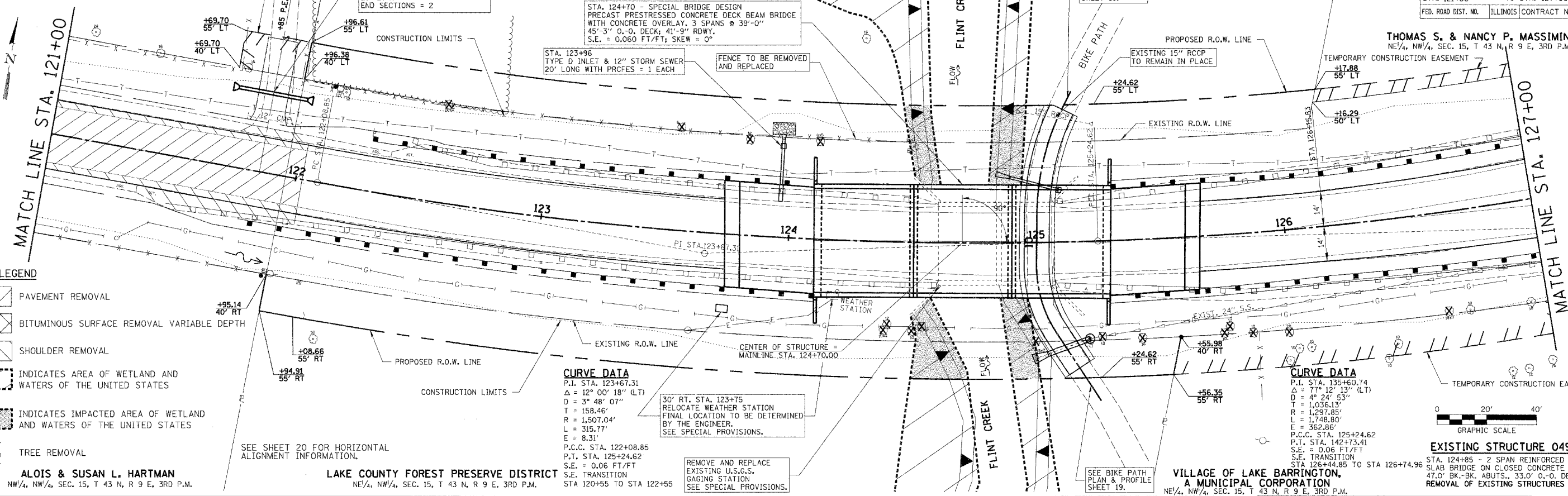


FAU	SECTION	COUNTY	TOTAL SHEETS	SHEET NO.
3706	00-00068-07-BR	LAKE	50	17
STA. 121+00		TO STA. 127+00		
FED. ROAD DIST. NO.		ILLINOIS CONTRACT NO. 83906		

CHARLES W. & MARYELLEN PALM
 NW/4, NW/4, SEC. 15, T 43 N, R 9 E, 3RD P.M.
 TEMPORARY CONSTRUCTION EASEMENT

LAKE COUNTY FOREST PRESERVE DISTRICT
 NE/4, NW/4, SEC. 15, T 43 N, R 9 E, 3RD P.M.

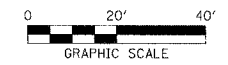
THOMAS S. & NANCY P. MASSIMINO
 NE/4, NW/4, SEC. 15, T 43 N, R 9 E, 3RD P.M.



- LEGEND**
- PAVEMENT REMOVAL
 - BITUMINOUS SURFACE REMOVAL VARIABLE DEPTH
 - SHOULDER REMOVAL
 - INDICATES AREA OF WETLAND AND WATERS OF THE UNITED STATES
 - INDICATES IMPACTED AREA OF WETLAND AND WATERS OF THE UNITED STATES
 - TREE REMOVAL

CURVE DATA
 P.I. STA. 123+67.31
 $\Delta = 12^\circ 00' 18''$ (LT)
 $D = 3^\circ 48' 07''$
 $T = 158.46'$
 $R = 1,507.04'$
 $L = 315.77'$
 $E = 8.31'$
 P.C.C. STA. 122+08.85
 P.T. STA. 125+24.62
 S.E. = 0.06 FT/FT
 S.E. TRANSITION STA 120+55 TO STA 122+55

CURVE DATA
 P.I. STA. 125+60.74
 $\Delta = 77^\circ 12' 13''$ (LT)
 $D = 4^\circ 24' 53''$
 $T = 1,036.13'$
 $R = 1,297.85'$
 $L = 1,748.80'$
 $E = 362.86'$
 P.C.C. STA. 125+24.62
 P.T. STA. 127+73.41
 S.E. = 0.06 FT/FT
 S.E. TRANSITION STA 126+44.85 TO STA 126+74.96



EXISTING STRUCTURE 049-3036
 STA. 124+85 - 2 SPAN REINFORCED CONCRETE SLAB BRIDGE ON CLOSED CONCRETE ABUTMENTS. 47.0' BK.-BK. ABUTS., 33.0' O.-O. DECK
 REMOVAL OF EXISTING STRUCTURES = 1 EACH

PLAN

DATE	BY
NO. 000000	NO. 000000
NO. 000000	NO. 000000

PROFILE

DATE	BY
NO. 000000	NO. 000000
NO. 000000	NO. 000000

