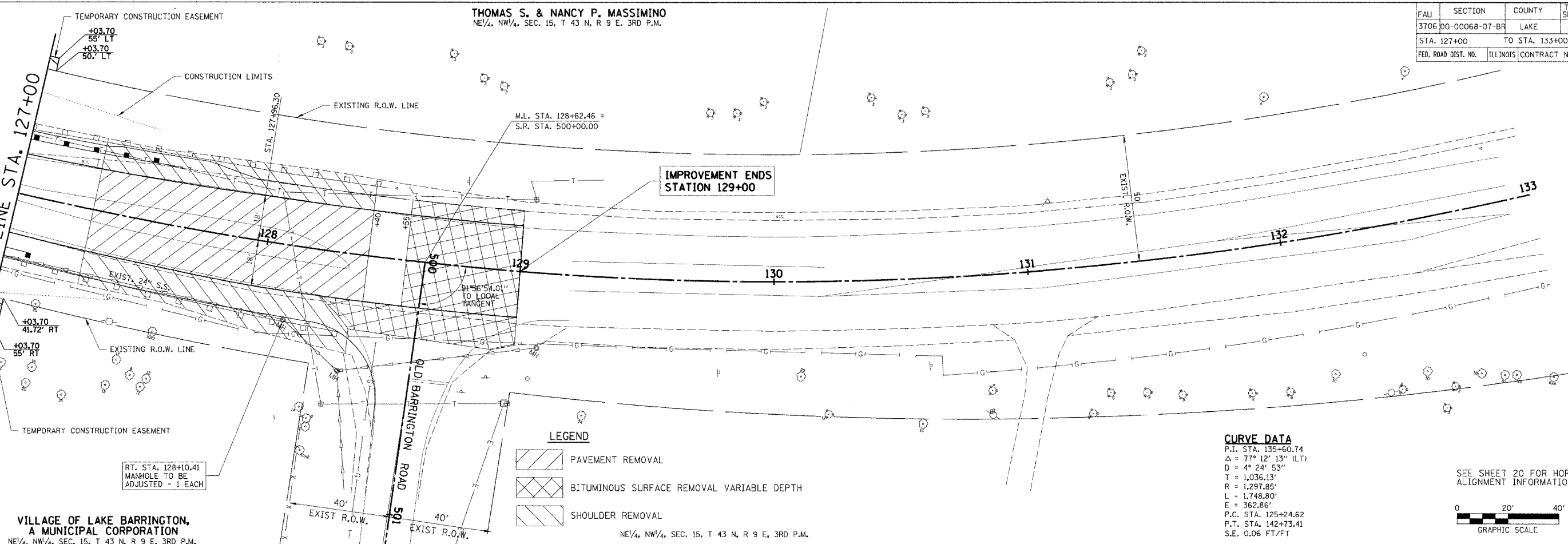


FALL	SECTION	COUNTY	TOTAL SHEETS	SHEET NO.
3706	00-00068-07-BR	LAKE	50	18
STA. 127+00		TO STA. 133+00		
FED. ROAD DIST. NO.		ILLINOIS CONTRACT NO. 83806		

THOMAS S. & NANCY P. MASSIMINO
NE 1/4, NW 1/4, SEC. 15, T 43 N, R 9 E, 3RD P.M.



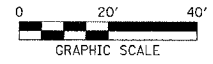
IMPROVEMENT ENDS
STATION 129+00

LEGEND

- PAVEMENT REMOVAL
- BITUMINOUS SURFACE REMOVAL VARIABLE DEPTH
- SHOULDER REMOVAL

CURVE DATA
P.I. STA. 135+60.74
 $\Delta = 77^\circ 12' 13''$ (LT)
 $D = 4^\circ 24' 53''$
 $T = 1,036.13'$
 $R = 1,297.85'$
 $L = 1,748.80'$
 $E = 362.86'$
P.C. STA. 125+24.62
P.T. STA. 142+73.41
S.E. 0.06 FT/FT

SEE SHEET 20 FOR HORIZONTAL
ALIGNMENT INFORMATION.



VILLAGE OF LAKE BARRINGTON,
A MUNICIPAL CORPORATION
NE 1/4, NW 1/4, SEC. 15, T 43 N, R 9 E, 3RD P.M.

NE 1/4, NW 1/4, SEC. 15, T 43 N, R 9 E, 3RD P.M.

PLAN

DATE	BY
NO. DRAWING	NO. CHECKED
NO. APPROVAL	NO. FILED

PROFILE

DATE	BY
NO. DRAWING	NO. CHECKED
NO. APPROVAL	NO. FILED

