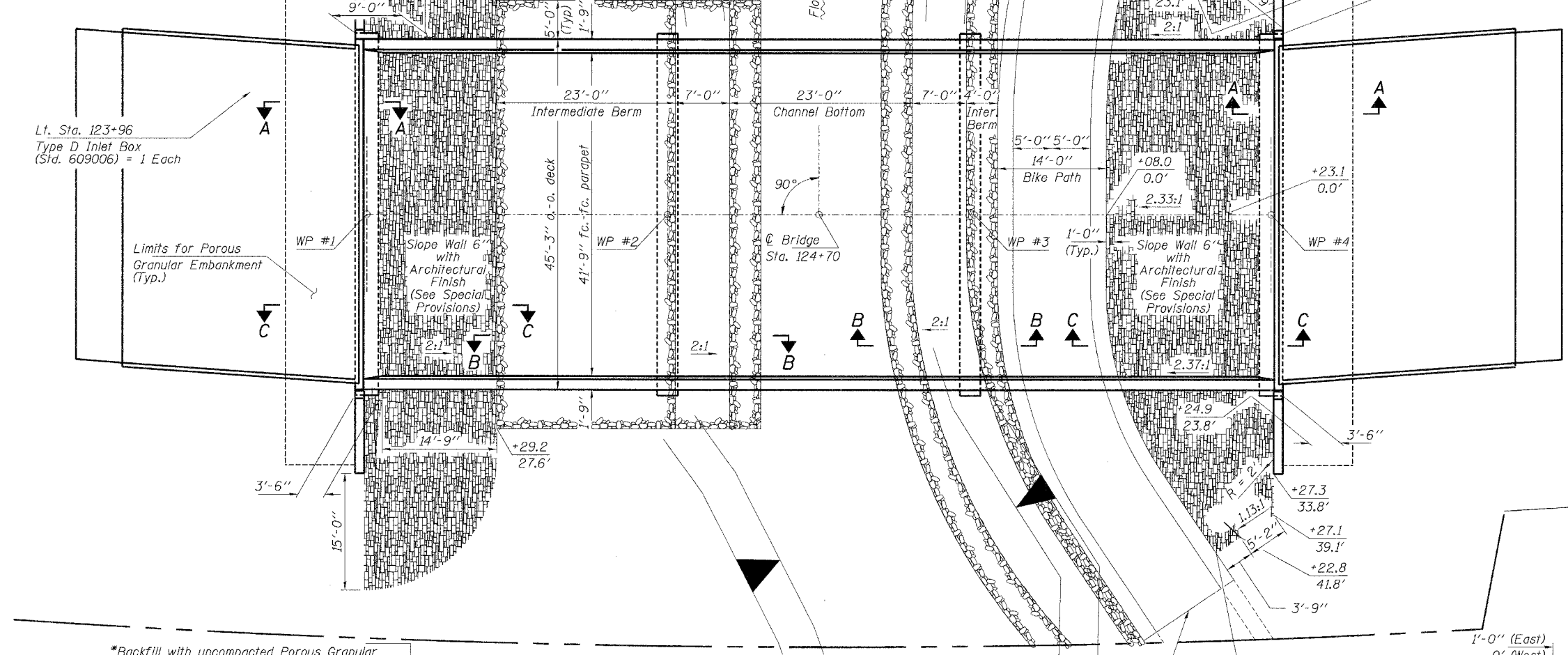


ROUTE NO.	SECTION	COUNTY	TOTAL SHEETS	SHEET NO.
F.A.U. 3706	00-00068-07-BR	LAKE	50	25
FED. ROAD DIST. NO.		BILLING	FED. AID PROJECT - BRM-7003(876)	
CONTRACT NO. 83806				

Note:
The engineer shall assure the Inlet/Pipe is located between T.B.T. Posts. Check location after construction and adjust Post location if necessary.
See sheet 5 for quantity tables.

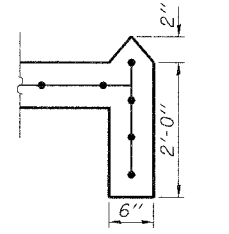
- Stone Riprap, Class A4 (5 Sq. Yds.)
- Precast Reinforced Concrete Flared End Section, 12" = 1 Each D.S.F.L. Elev. 744.25
- Concrete Thrust Blocks = 1 Each
- Storm Sewers, Class A, Type 2, 12" = 20 Foot



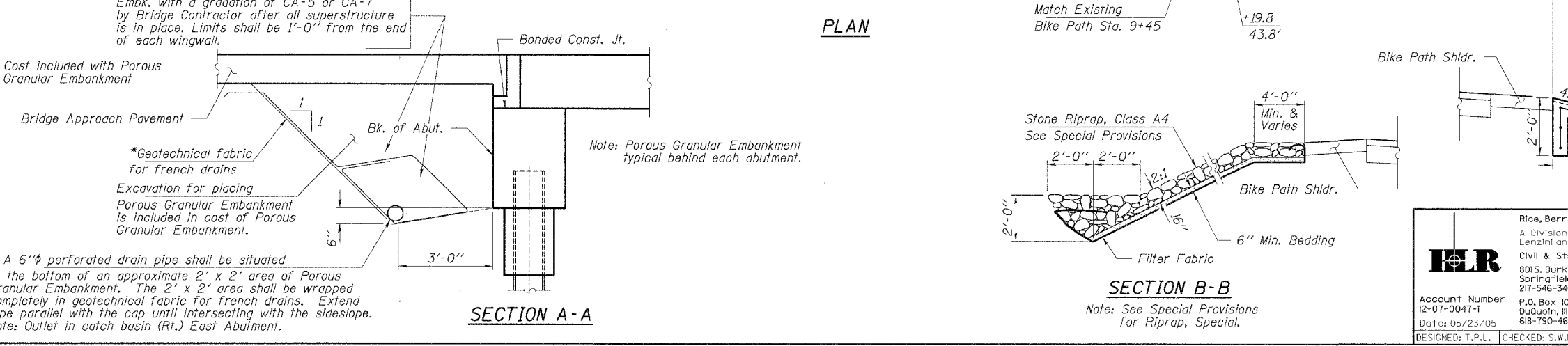
OFFSET SKETCH

CURVE DATA

P.I. STA. 123+67.31
 $\Delta = 12^\circ 00' 18''$ (LT)
 $D = 3^\circ 48' 07''$
 $T = 158.46'$
 $R = 1,507.04'$
 $L = 315.77'$
 $E = 8.31'$
 P.C.C. STA. 122+08.85
 P.T. STA. 125+24.62
 S.E. = 0.06 FT/FT
 S.E. TRANSITION STA 120+55 TO STA 122+55



SECTION D-D



*Backfill with uncompacted Porous Granular Embk. with a gradation of CA-5 or CA-7 by Bridge Contractor after all superstructure is in place. Limits shall be 1'-0" from the end of each wingwall.

*Cost Included with Porous Granular Embankment

*A 6" ϕ perforated drain pipe shall be situated at the bottom of an approximate 2' x 2' area of Porous Granular Embankment. The 2' x 2' area shall be wrapped completely in geotechnical fabric for french drains. Extend pipe parallel with the cap until intersecting with the sideslope. Note: Outlet in catch basin (Rt.) East Abutment.

Note: Porous Granular Embankment typical behind each abutment.

HER

Rice, Berry and Associates
 A Division of Hampton, Lenzini and Renwick, Inc.
 Civil & Structural Engineers
 801 S. Durkin Drive
 Springfield, Illinois 62704
 217-546-3400

Account Number 12-07-0047-1
 Date: 05/23/05
 DESIGNED: T.P.L. CHECKED: S.W.M. DRAWN: D.T.M.

RIPRAP & SLOPE WALL DETAILS

SECTION 00-00068-07-BR

F.A.U. 3706 / C.H. 30 / KELSEY ROAD
 LAKE COUNTY
 STATION 124+70