



DESIGN RESOURCES INC.
CIVIL ENGINEERING AND LAND SURVEYING
 1475 S. PERRYVILLE ROAD
 ROCKFORD, ILLINOIS 61108
 (815) 484-4300
 (815) 484-4303 FAX

PROJECT NAME
MULFORD RD./ RIVERSIDE BLVD INTERSECTION
03-00334-00-SP
 WINNEBAGO COUNTY
 HIGHWAY DEPARTMENT
 424 N SPRINGFIELD AVENUE
 ROCKFORD, IL 61101
 (815) 965-9431
CONSULTANTS

SEAL / SIGNATURE

ISSUED FOR	DATE
AGENCY REVIEW	03.04.05
AGENCY REVIEW	05.13.05

REVISIONS	NO.	ITEM	DATE

DRAWN MVT
CHECKED MRR

PROJECT NUMBER
04227

SHEET TITLE

CABLE PLAN & SIGNAL QUANTITIES

MULFORD ROAD/ RIVERSIDE BOULEVARD

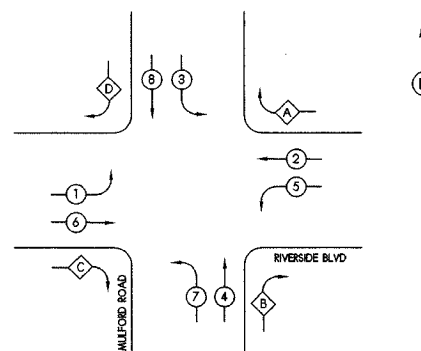
SHEET NUMBER
13 of x

CABLE PLAN LEGEND

	PROPOSED	EXISTING
CONTROLLER	≡	⊠
SERVICE INSTALLATION	—	⊕
SIGNAL FACE WITH BACKPLATE		
SIGNAL FACE WITH OPTICALLY PROGRAMMED		
SIGNAL FACE WITH DIRECTIONAL LOUVRE, TYPE B		
LUMINAIRE, SODIUM VAPOR, 400 WATT	*	☆
12" TRAFFIC SIGNAL SECTION	R	R
CONDUCTORS	7	7
VEHICLE DETECTOR INDUCTION LOOP	□	□

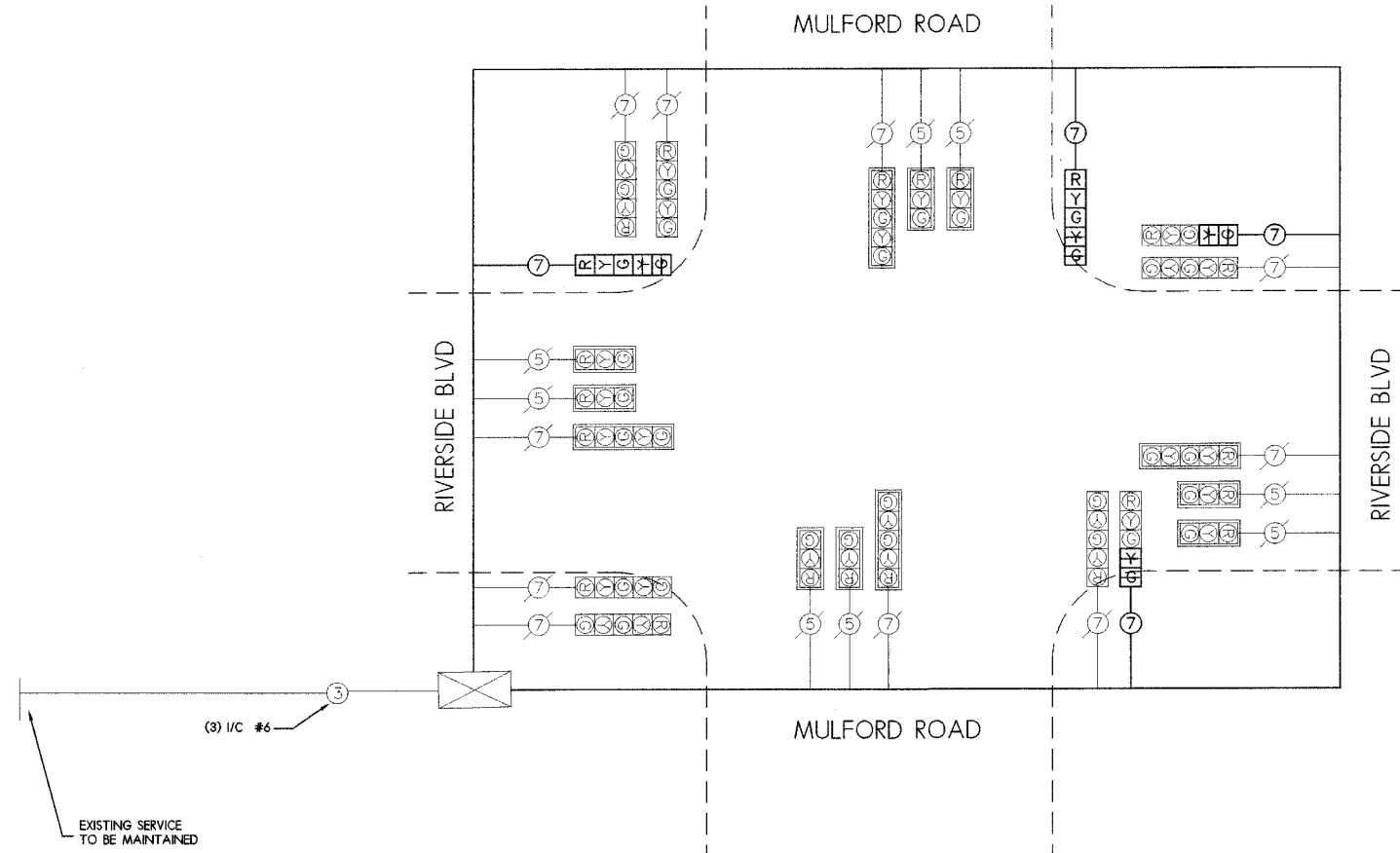
PHASE DESIGNATION DIAGRAM

THE VEHICULAR PHASES TO BE USED ARE DESIGNATED BELOW:



PHASE DIAGRAM LEGEND
 SINGLE ENTRY PHASE
 DUAL ENTRY PHASE
 OVERLAP PHASE A = 2+3
 B = 4+5

CABLE PLAN (MAST ARMS ONLY)



MAST ARM DETAILS

