

T.R.	SECTION	COUNTY	TOTAL SHEETS	SHEET NO.
352	99-24115-00-BR	SHELBY	15	1
FED. ROAD DIST. NO.		ILLINOIS	FED. AID PROJECT	

# STATE OF ILLINOIS DEPARTMENT OF TRANSPORTATION PLANS FOR PROPOSED BRIDGE REPLACEMENT AND REHABILITATION PROGRAM

**TOWNSHIP ROAD 352  
SECTION 99-24115-00-BR  
WINDSOR ROAD DISTRICT  
SHELBY COUNTY  
PROPOSED STRUCTURE No. 087-3513  
PROJECT No. BROS-173 (128)  
JOB No. C-95-322-04**

**INDEX OF DRAWINGS**

- 1 COVER SHEET
- 2 SUMMARY OF QUANTITIES, GENERAL NOTES, TYPICAL SECTIONS, AND ENTRANCE DETAILS
- 3-4 SOIL EROSION AND SEDIMENT CONTROL PLAN
- 5 PLAN & PROFILE
- 6-11 CROSS SECTIONS
- 12-15 BRIDGE PLANS

**REQUIRED HIGHWAY STANDARDS**

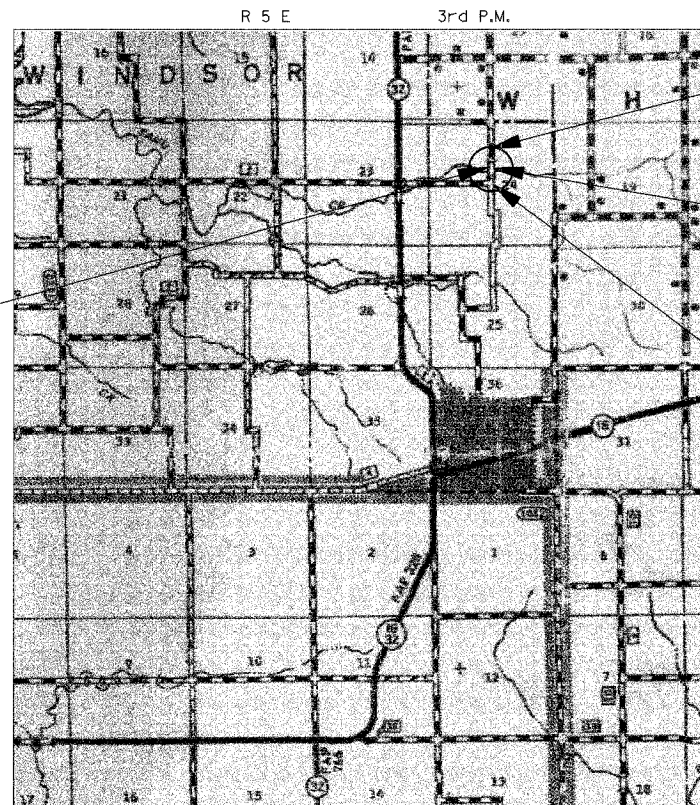
- 000001-04 STANDARD SYMBOLS, ABBREVIATIONS AND PATTERNS
- 280001-02 TEMPORARY EROSION CONTROL SYSTEMS
- 515001-02 NAME PLATE FOR BRIDGES
- 702001-05 TRAFFIC CONTROL DEVICES
- BLR21-6 TYPICAL APPLICATION OF TRAFFIC CONTROL DEVICES FOR CONSTRUCTION ON RURAL LOCAL HIGHWAYS

**UTILITY COMPANIES**

ILLINOIS CONSOLIDATED TELEPHONE CO.  
121 SOUTH 17th. STREET  
MATTOON, ILLINOIS 61938  
1-(217) 235-3311

SHELBY ELECTRIC COOPERATIVE  
MR. JIM MATLOCK  
P.O. BOX 560  
SHELBYVILLE, ILLINOIS 62565  
(217) 774-3986

**EXISTING STRUCTURE NO. 087-3308**  
SINGLE SPAN BRIDGE WITH STEEL GIRDERS, CORRUGATED STEEL DECK WITH ASPHALT OVERLAY. CLOSED TIMBER ABUTMENTS AND WINGWALLS. 36'-0" BK TO BK ABUTMENTS 23'-8" OUT TO OUT WIDTH.



PROJECT ENDS  
STA. 14+00.00

**STA. 10+00.00 SPECIAL BRIDGE DESIGN**  
SINGLE SPAN 33" P.C.C. DECK BEAM BRIDGE  
68'-0" BK. TO BK. ABUTMENTS, 24'-0" CLEAR WIDTH  
PILE BENT ABUTMENTS, 10° SKEW RT.  
STRUCTURE No. 087-3513

PROJECT BEGINS  
STA. 5+75.00

NO COMMITMENTS

The acceptance of this project is based on the minimum design criteria for a Federal-Aid Bridge Replacement and Rehabilitation Improvement.

**SCALES**

PLAN	1" = 50'	
PROFILE HORIZ.	1" = 50'	
PROFILE VERT.	1" = 5'	
CROSS SECTIONS HORIZ.	1" = 10'	
CROSS SECTIONS VERT.	1" = 5'	

PLANS PREPARED BY:

International Engineering Consultants, Inc.  
6420 South Sixth Street Road  
Springfield, Illinois 62707  
Tel. (217) 529-8027  
Tel. (217) 529-4643  
Fax (217) 529-4643  
e-mail: iespringfield@ie-consultants.com

188 W. Randolph St. Suite 1826  
Chicago, Illinois 60601  
Tel. (312) 920-9525  
Tel. (312) 920-9570  
e-Mail: iechicago@ie-consultants.com

**LOCATION MAP**

0 1 2 MILES

APPROXIMATE SCALE: 1 INCH = 1 MILE  
NET LENGTH OF SECTION = 825.00 FEET = 0.1563 MILES  
FUNCTIONAL CLASSIFICATION: LOCAL ROAD  
CURRENT ADT = 75  
DESIGN ADT = 75  
DESIGN YEAR = 2025



*David Booher* 5-26-05  
David Booher, Illinois P.E. 062-043769 Date  
Expires 11-30-2005

APPROVED	5/31 20 05 <i>Don Crooks</i> Highway Commissioner
PASSED	5/31 20 05 <i>David A. Spill</i> County Engineer
PASSED	6/3 20 05 <i>David A. Spill</i> District Engineer of Local Roads & Streets
Releasing For Bid Based on Limited Review	June 7 20 05 <i>John...</i> Regional Engineer
STATE OF ILLINOIS DEPARTMENT OF TRANSPORTATION	

CALL **J.U.L.I.E.** (JOINT UTILITY LOCATION INFORMATION FOR EXCAVATORS)  
48 Hours (2 working days) Before You Dig.  
TOLL FREE: 1 (800) 892-0123