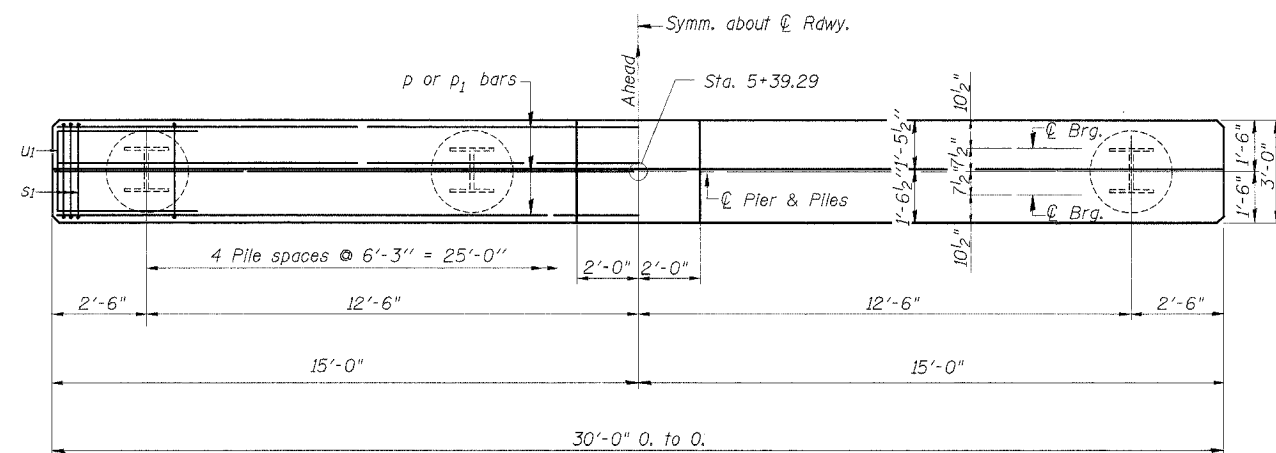
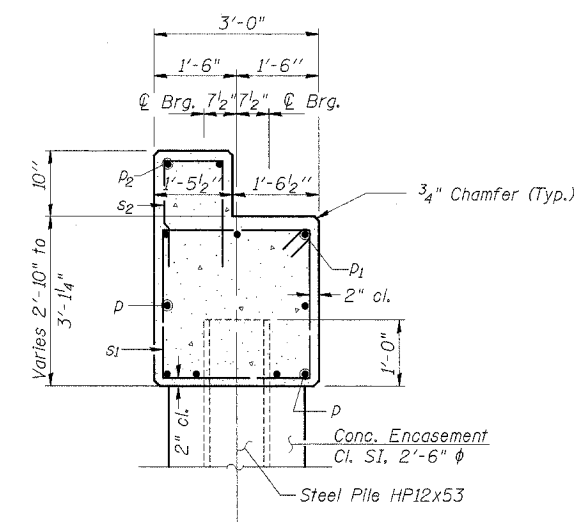
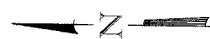


ROUTE NO.	SECTION	COUNTY	TOTAL SHEETS	SHEET NO.
T.R. 39	99-01123-00-BR	CUMBERLAND	//	//
ROAD DISTRICT	ILLINOIS	COTTONWOOD		

Note: All edges shall have standard 3/4" chamfer

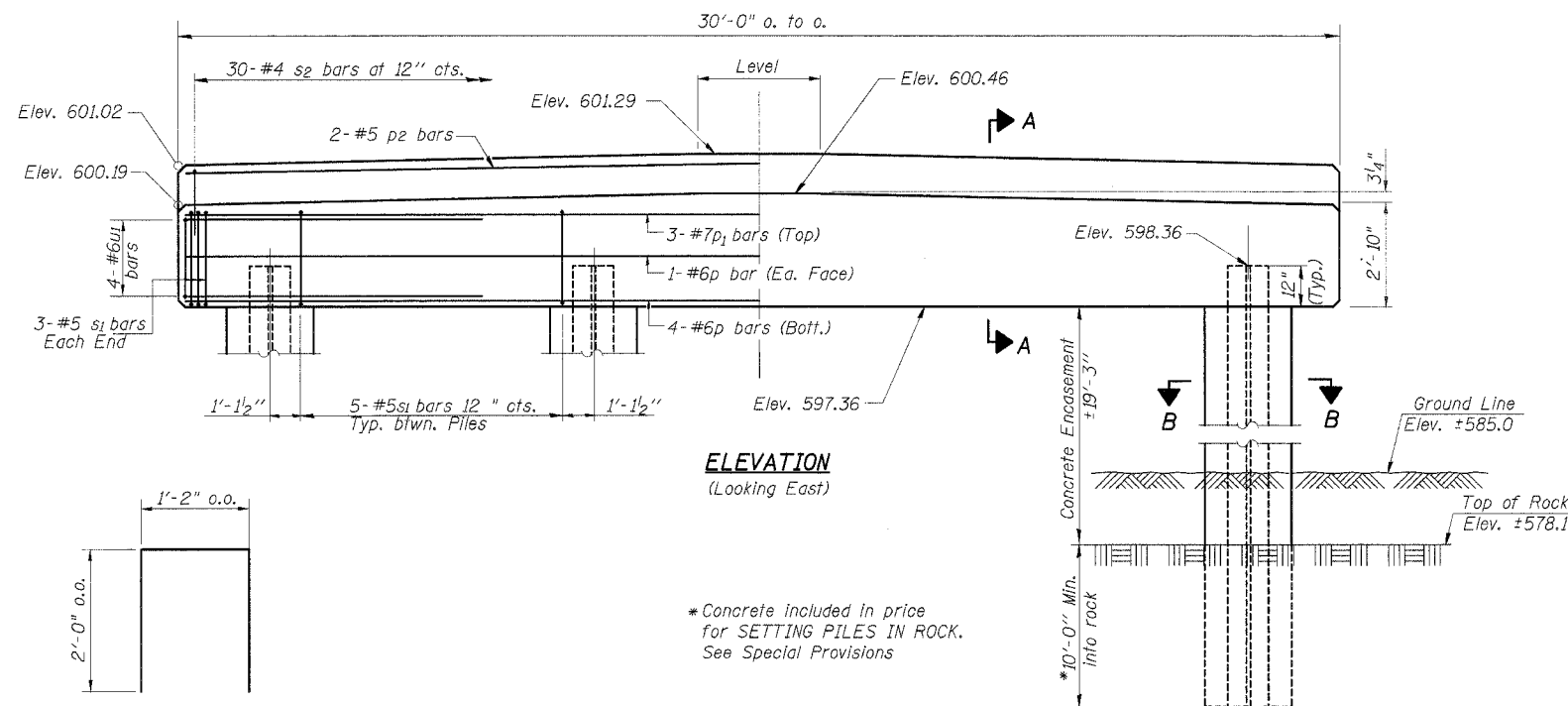


PLAN

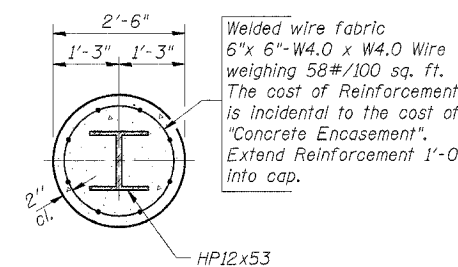


SECTION A-A
(Looking South)

Note A: Precore through the existing earth and rock as shown. Piles shall be grouted into the rock with Concrete. Precored holes shall be clean at time of placement and grouting. See Special Provisions.



ELEVATION
(Looking East)



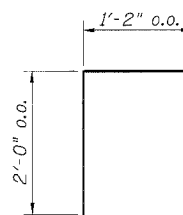
SECTION B-B

BILL OF MATERIAL - PIER 2

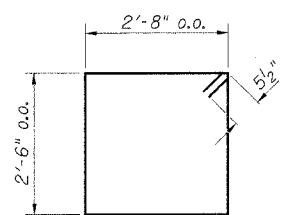
BAR	NO.	SIZE	LENGTH	SHAPE	
p	6	#6	29'-8"	—	
p1	3	#7	29'-8"	—	
p2	2	#5	29'-8"	—	
s1	26	#5	11'-3"	□	
s2	30	#4	5'-2"	□	
u1	8	#6	12'-7"	—	
Concrete Structures				Cu. Yd.	11.3
Reinforcement Bars				Pound	1,080
Furnishing Steel Piles HP12x53				Foot	155
Concrete Encasement				Cu. Yd.	17.5
Setting Piles in Rock				Each	5

PILE DATA

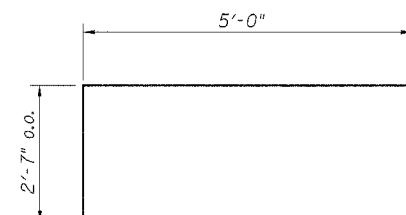
Type: HP12x53
 Capacity: Set in Rock (See Note A)
 Est. Length: 31 Feet/Pile
 No. Req'd (1 Pier): 5



BAR s2



BAR s1



BAR u1

DESIGNED	M.E.B.
CHECKED	F.J.S.
DRAWN	R.S.J.
CHECKED	F.J.S.

PIER 2

SECTION 99-01123-00-BR
 COTTONWOOD ROAD DISTRICT
 CUMBERLAND COUNTY
 STATION 5+09.25

4440 ASH GROVE SPRINGFIELD, IL 62707 (217) 793-8600 oasinc@famvid.com	OZYURT AND STONE, INC. CONSULTING ENGINEERS
JOB NO.: 0018.5 FILE: PIER2.DGN DATE: 02-19-03	