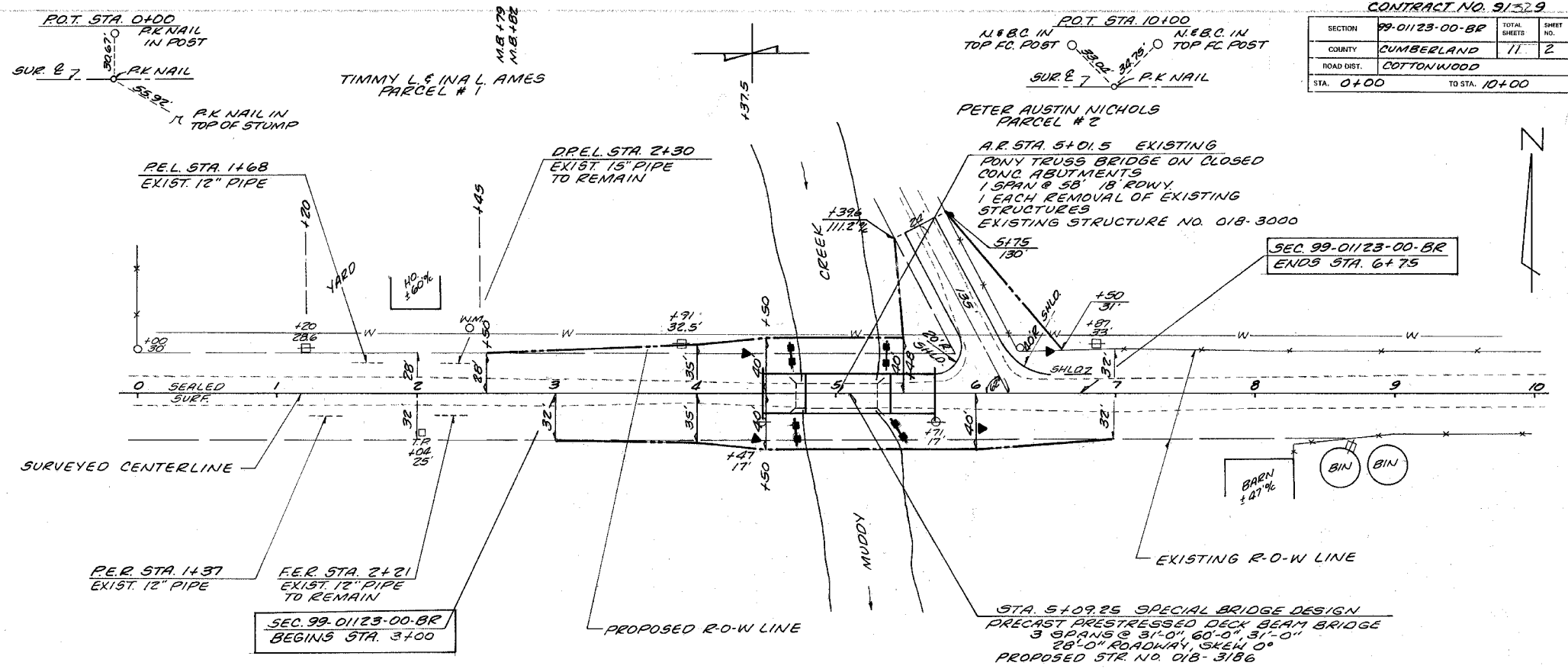
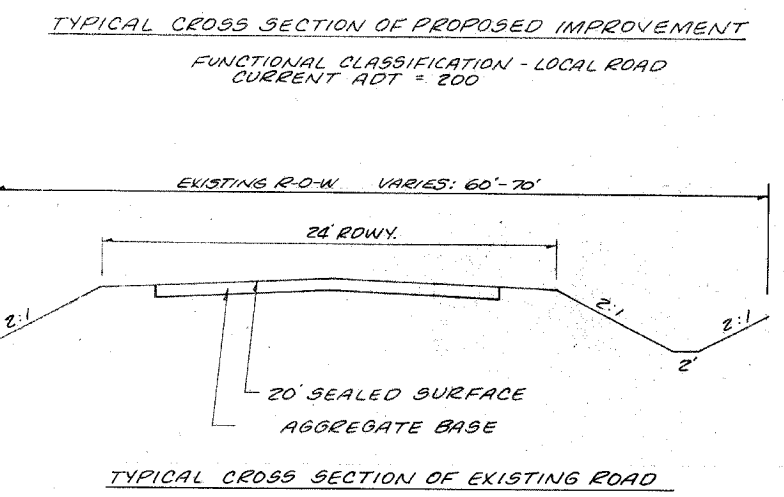
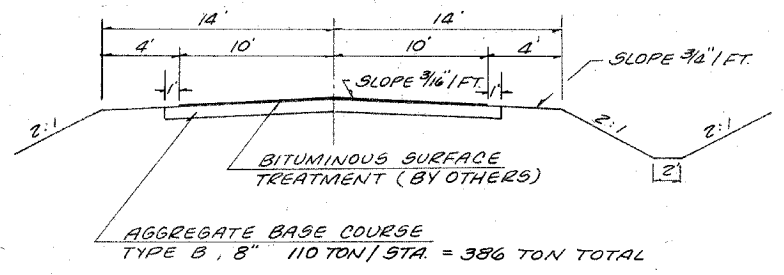




SECTION	99-0123-00-BR	TOTAL SHEETS	11	SHEET NO.	2
COUNTY	CUMBERLAND				
ROAD DIST.	COTTONWOOD				
STA.	0+00	TO STA.	10+00		



**CONSTRUCT TRANSITION FROM EXIST. ROWY TO PROP. ROWY.**  
 STA. 2+50 STA. 3+00  
 STA. 6+75 STA. 7+25  
 QUANTITIES INCLUDED IN THOSE LISTED

**EARTHWORK SCHEDULE**  
 EARTH EXCAVATION = 37 CU. YD.  
 EARTH EXCAVATION ADJUSTED 25% = 28 CU. YD.  
 CHANNEL EXCAVATION = 593 CU. YD.  
 CHANNEL EXCAVATION ADJUSTED 25% = 445 CU. YD.  
 EMBANKMENT = 1306 CU. YD.  
 FURNISHED EXCAVATION = 833 CU. YD.

B.M. #1 ELEV. 593.07  
 N.E.W. IN POWER POLE  
 32.5 FT. STA. 3+91

**TREE REMOVAL, ACRES**  
 RT. STA. 3+00 TO STA. 4+80 = 0.15 AC.  
 RT. STA. 5+40 TO STA. 7+00 = 0.15 AC.  
 TOTAL = 0.30 AC.

**SEEDING, CLASS 2 (SPECIAL)**  
 STA. 2+50 TO 7+25 = 0.80 ACRE

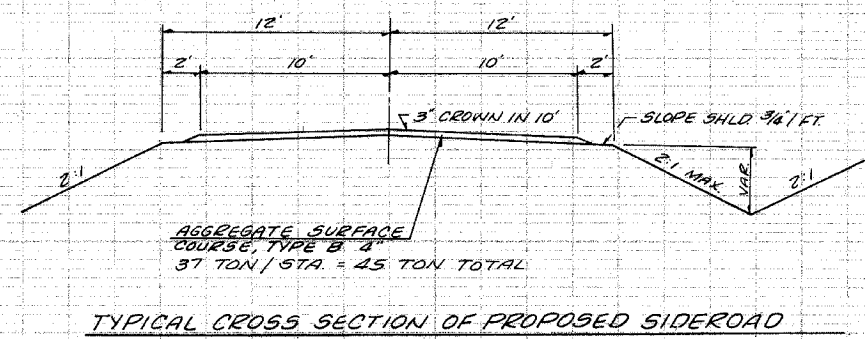
**TRAFFIC BARRIER TERMINAL TYPE SA**  
 1 @ EACH CORNER OF BRIDGE = 2 EACH \*

**TRAFFIC BARRIER TERMINAL TYPE 1, SPECIAL (TANGENT)**  
 N.W., S.W., & S.E. CORNER OF BRIDGE = 3 EACH

**STEEL PLATE BEAM GUARDRAIL, TYPE B**  
 FROM END OF TYPE SA, STA. 5+71 TO END  
 20' RADIUS = 37.5 FOOT  
 (NOTE 9'-0" ON TANGENT & 28'-6" ON RADIUS)  
 1 END SECTION (COST INCIDENTAL)

\* TY SA @ N.E. CORNER ON 20' RADIUS

**TERMINAL MARKER - DIRECT APPLIED**  
 N.W., S.W. & S.E. CORNERS OF BRIDGE = 3 EACH

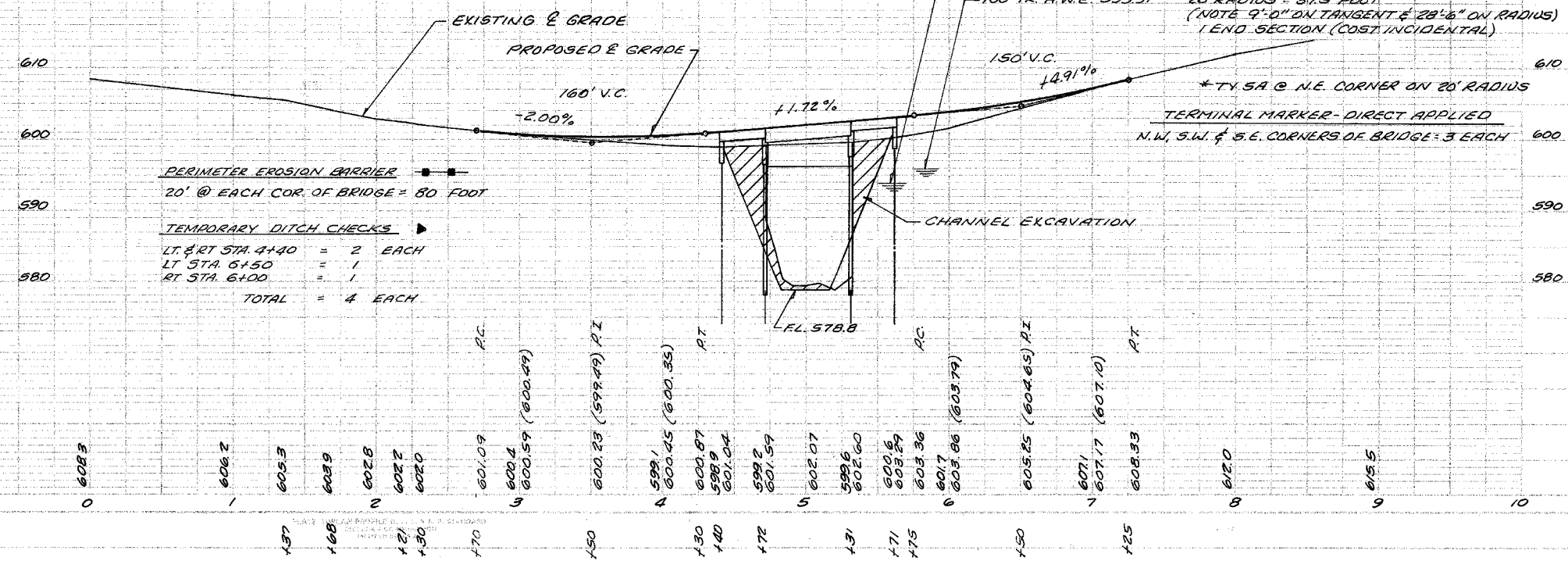


**UTILITIES**

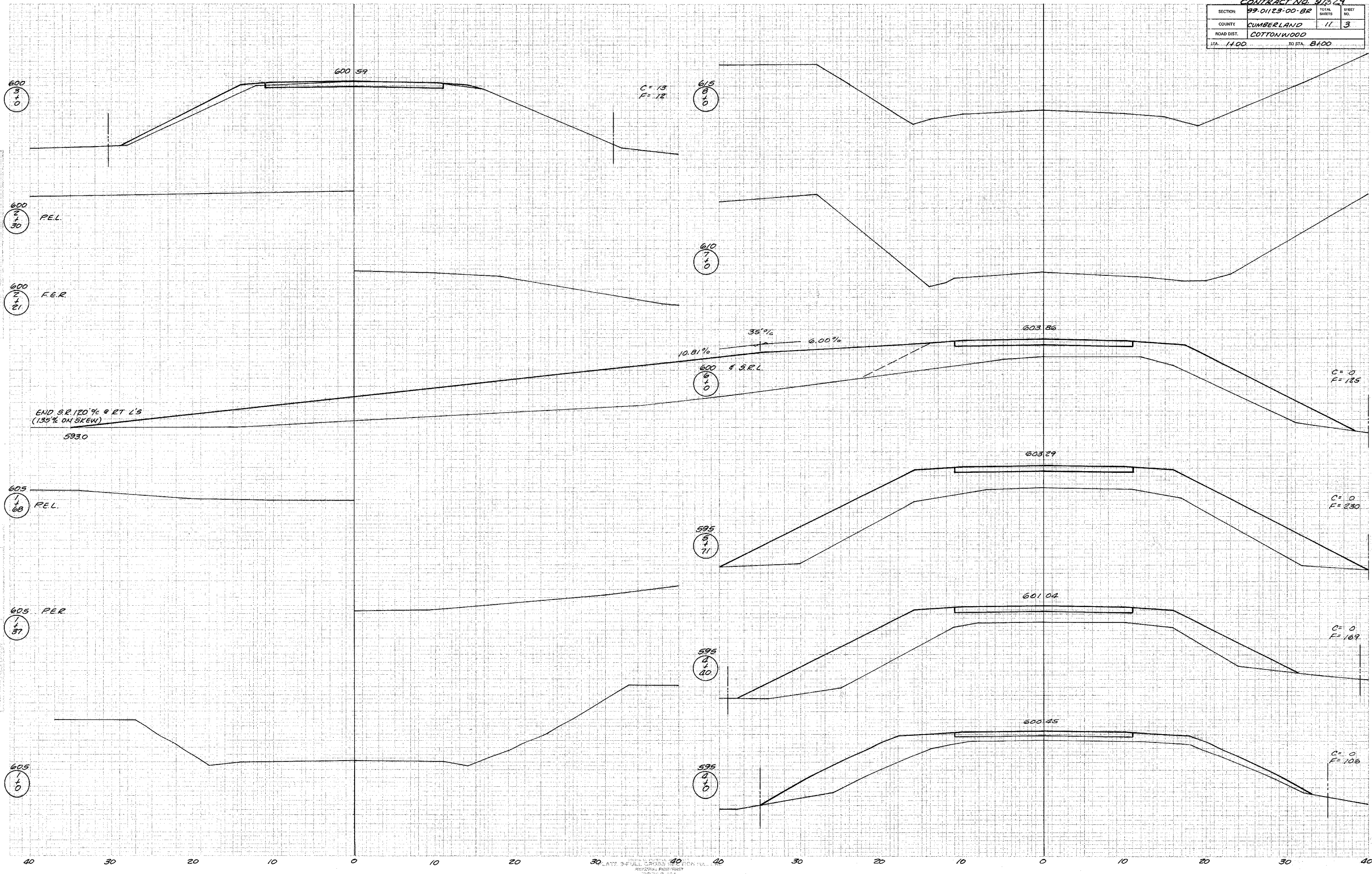
TELEPHONE: VERIZON NORTH  
 212 EAST GROVE  
 KANTOUL, IL 61866  
 PH. 217-892-3359

ELECTRIC: COLES MOULTRIE ELECTRIC  
 104 DEWITT AVE E  
 MATTOON, IL 61938  
 PH. 217-235-0341

WATER: CLEARWATER SERVICE CORP  
 2020 N. COUNTY ROAD 150 E  
 MATTOON, IL 61938  
 PH. 217-258-6711

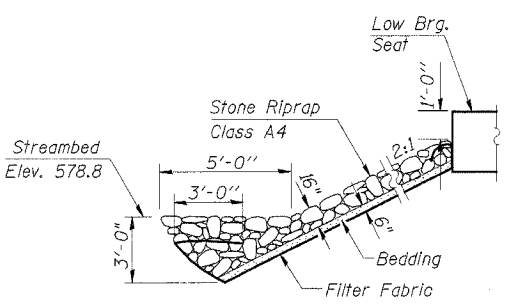
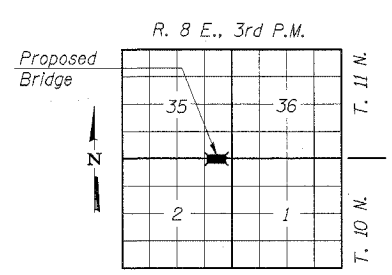
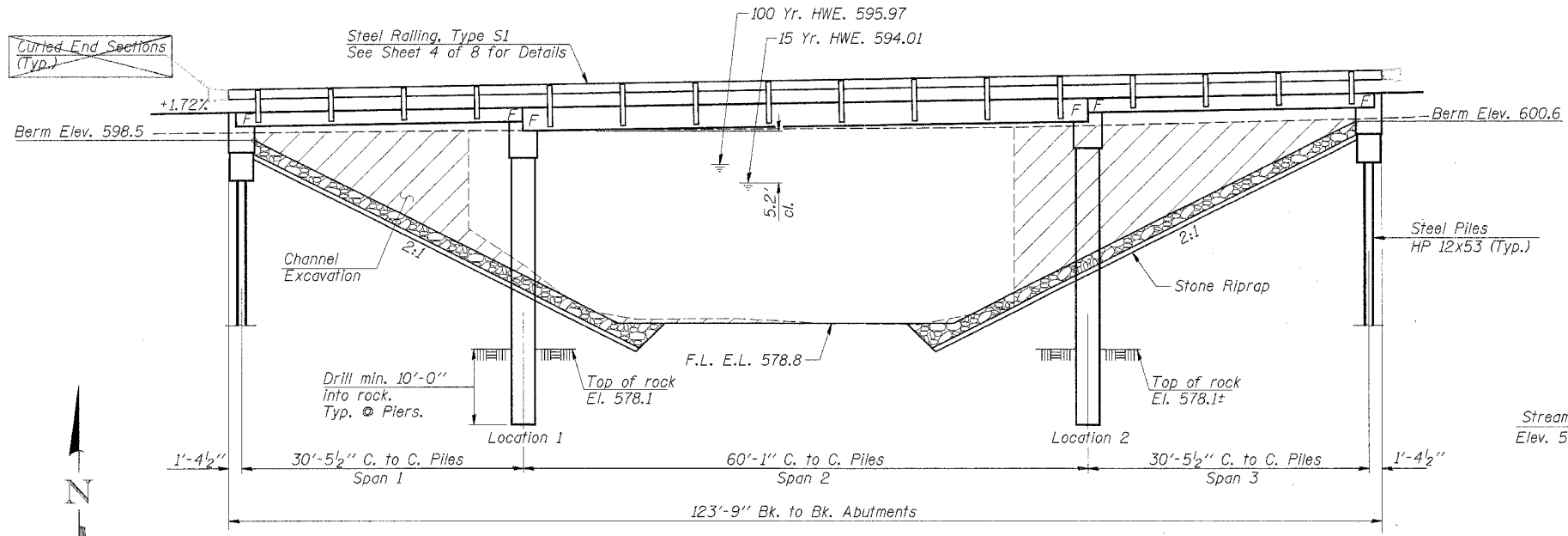


CONTRACT NO. 91329		
SECTION	99-01123-00-BR	TOTAL SHEETS
COUNTY	CUMBERLAND	11 3
ROAD DIST.	COTTONWOOD	
STA. 1400		TO STA. 8400



CONTRACT NO. 99-0123				
ROUTE NO.	SECTION	COUNTY	TOTAL SHEETS	SHEET NO.
T.R. 39	99-0123	CUMBERLAND	11	4
ROAD DISTRICT		ILLINOIS	COTTONWOOD	

Sheet 1 of 8



**GENERAL NOTES**

See Proposal Booklet for Boring data.

Reinforcement bars shall conform to the requirements of AASHTO M-31, M-42 or M-53, Grade 60.

The Contractor shall drive two steel test piles in a permanent location, one at each abutment, as directed by the Engineer, before ordering the remainder of piles.

Layout of slope protection system may be varied in the field to suit ground conditions as directed by the Engineer.

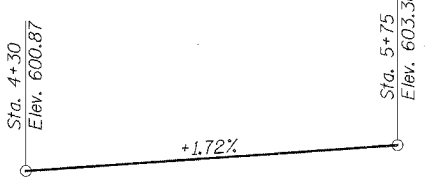
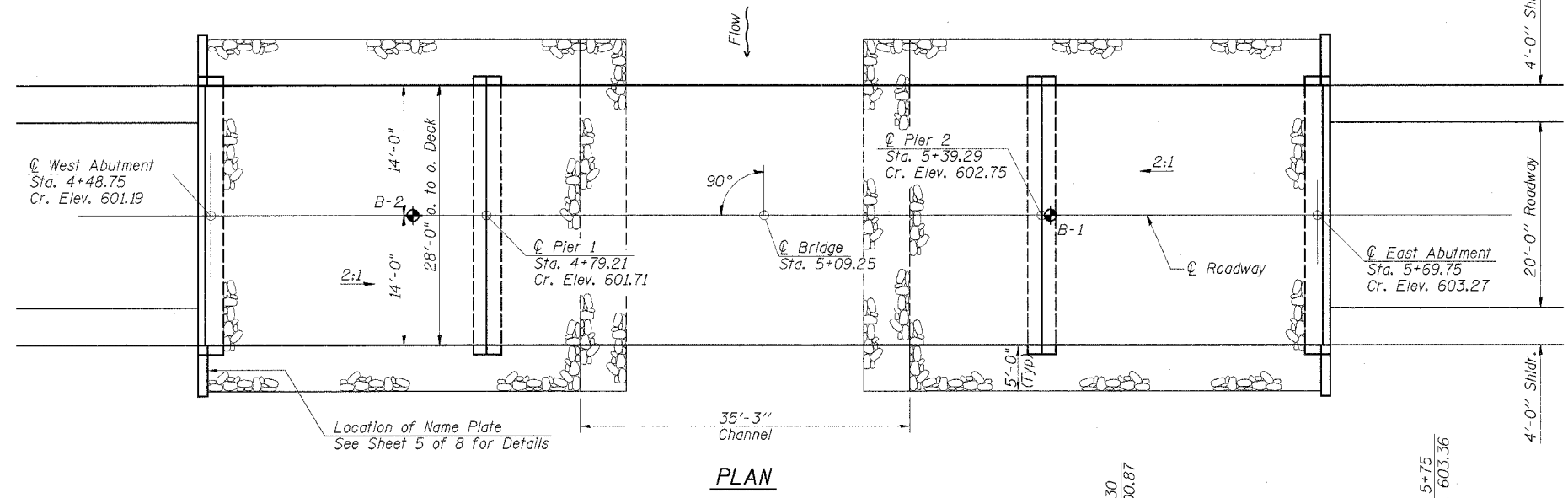
Excavation for structures shall be considered as included in the contract unit price for the class of concrete involved.

MUDDY CREEK  
BUILT 200\_ BY  
COTTONWOOD ROAD DISTRICT  
CUMBERLAND COUNTY  
SEC. 99-0123-00-BR  
STR. NO. 018-3186  
LOADING HS20

**LETTERING FOR NAME PLATE**  
See Std. 515001

**TOTAL BILL OF MATERIAL**

ITEM	UNIT	SUPER	SUB	TOTAL
Precast Prestressed Concrete Deck Beams (17" Depth)	Sq. Ft.	1,736		1,736
Precast Prestressed Concrete Deck Beams (27" Depth)	Sq. Ft.	1,680		1,680
Concrete Structures	Cu. Yd.		45.8	45.8
Reinforcement Bars	Pound		5,100	5,100
Steel Railing, Type S1	Foot	245		245
Name Plates	Each		1	1
Furnishing Steel Piles HP12x53	Foot		450	450
Driving Steel Piles HP12x53	Foot		150	150
Test Pile Steel HP12x53	Each		2	2
Stone Riprap, Class A4	Ton	329		329
Filter Fabric	Sq. Yd.		437	437
Concrete Encasement	Cu. Yd.		36.7	36.7
Underwater Structure Excavation Protection Location 1	Each		1	1
Underwater Structure Excavation Protection Location 2	Each		1	1
Setting Piles in Rock	Each		10	10



**Construction Permits:**  
The requirements of the IDNR - Division of Water Resources have been fulfilled in accordance with Statewide Permit No. 12.

**WATERWAY INFORMATION**

DESIGNED	M.E.B.
CHECKED	F.J.S.
DRAWN	R.S.J.
CHECKED	F.J.S.

Drainage Area	29.2 Sq. Mi.
Existing Opening (15 Yr.)	783 Sq. Ft.
Required Opening (15 Yr.)	943 Sq. Ft.
Proposed Opening (15 Yr.)	943 Sq. Ft.
Design Discharge (15 Yr.)	4293 C.F.S.
Created Head (15 Yr.)	0.1 Ft.
100 Year Discharge	6892 C.F.S.
100 Yr. Created Head	0.4 Ft.

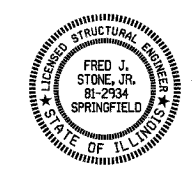
**DESIGN STRESSES**

$f'_c = 5,000$  p.s.i. (Prestressed Beams)  
 $f'_{ci} = 4,000$  p.s.i. (Prestressed Beams)  
 $f'_c = 1,400$  p.s.i. (Concrete)  
 $f'_s = 270,000$  p.s.i. (Prestressed Strands)  
 $f'_{si} = 189,000$  p.s.i. (Prestressed Strands)  
 $f'_s = 24,000$  p.s.i. (Reinf. Bars -- Field Units)  
 $f'_y = 60,000$  p.s.i. (Reinf. Bars -- Field Units)  
 $n = 9$  (Concrete)  
 LOADING HS20-44  
 Design Specifications: 1996 AASHTO & 1997 - 2002 Interims  
 50#/Sq. Ft. included in dead load for future wearing surface.

**PROFILE GRADE**

"I certify that to the best of my knowledge, information and belief, this bridge design is structurally adequate for the design loading shown on the plans. The design is an economical one for the style of structure and complies with requirements of the current 'AASHTO Standard Specifications for Highway Bridges'."

Fred J. Stone, Jr. (2-20-03)  
ILLINOIS STRUCTURAL NO. 2934 (Expires 11/30/04)

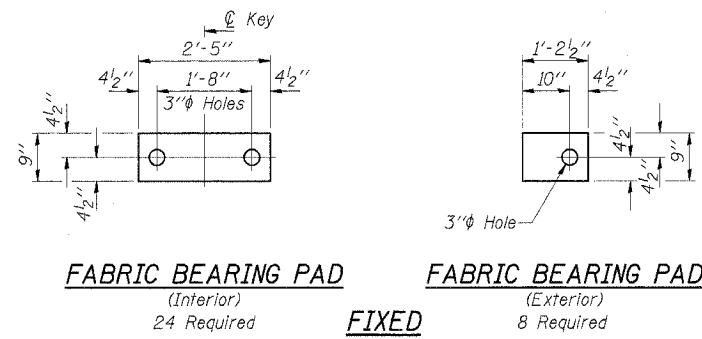


**GENERAL PLAN & ELEVATION**

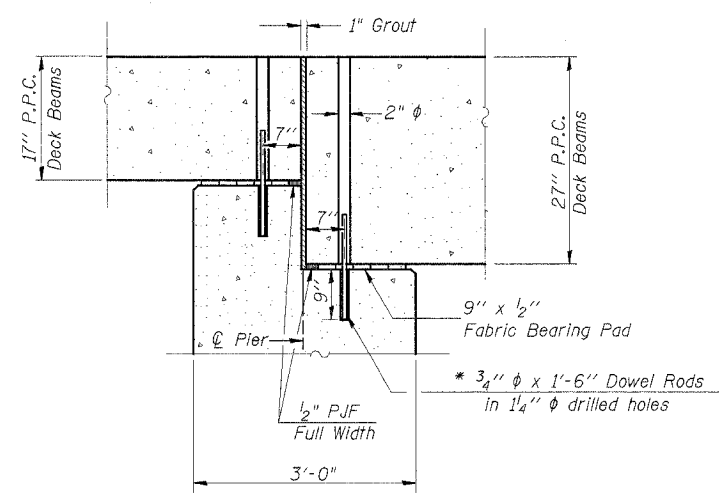
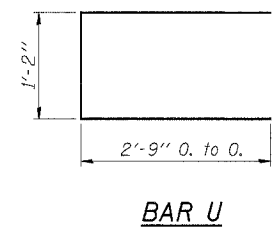
SECTION 99-0123-00-BR  
COTTONWOOD ROAD DISTRICT  
CUMBERLAND COUNTY  
STATION 5+09.25

4440 ASH GROVE SPRINGFIELD, IL. 62707 (217) 793-8600 oasinc@tamvia.com	<b>OZYURT AND STONE, INC.</b> CONSULTING ENGINEERS	JOB NO.: 0018.5 FILE: GPE.DGN DATE: 02-19-03
---	---	--

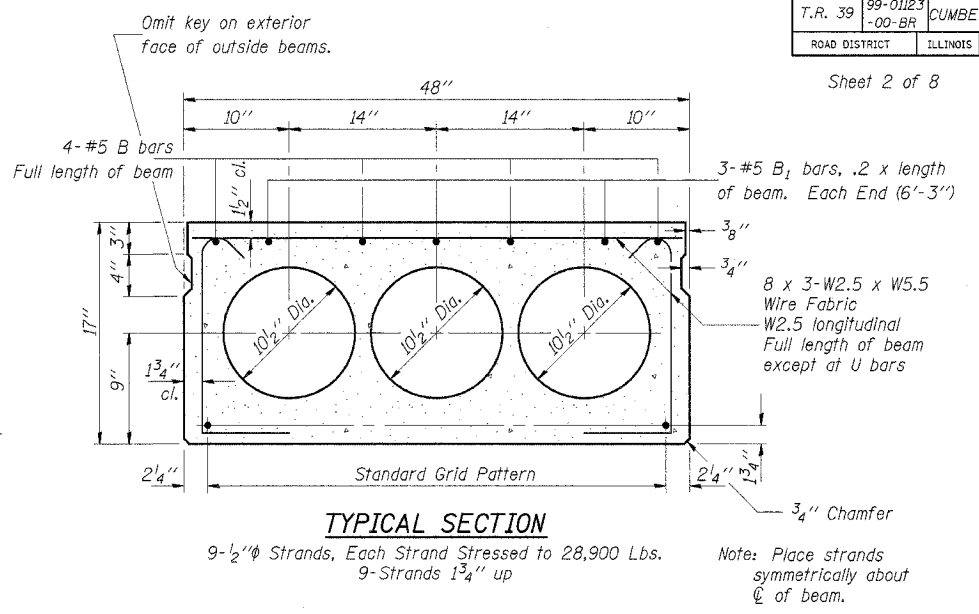
ROUTE NO.	SECTION	COUNTY	TOTAL SHEETS	SHEET NO.
T.R. 39	99-01123-00-BR	CUMBERLAND	11	5
ROAD DISTRICT	ILLINOIS	COTTONWOOD		



**FIXED**

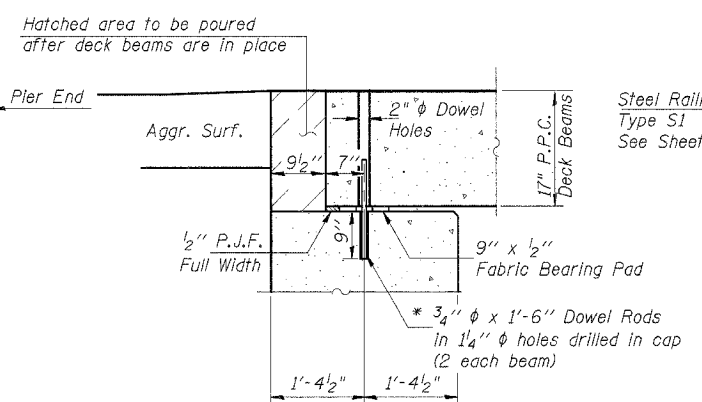
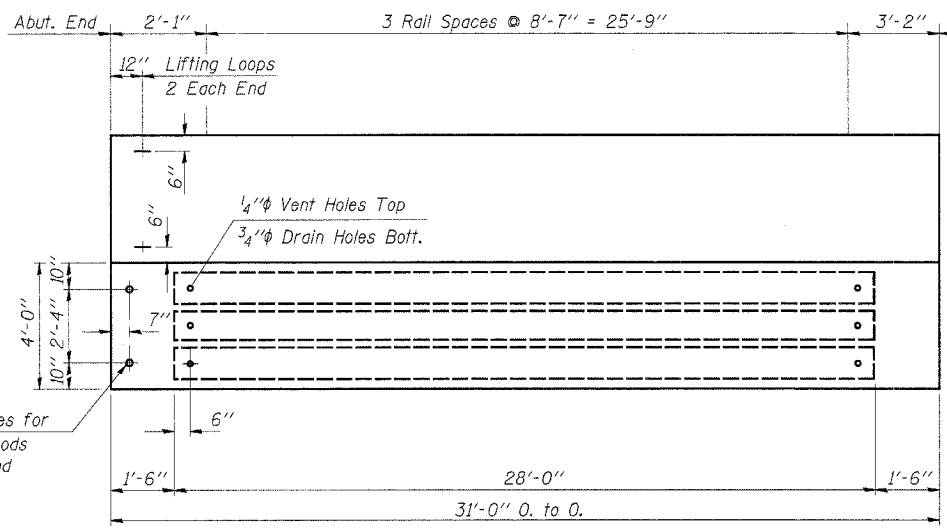


\* Note: After beams are in place, 1/4" holes shall be drilled into the Substructure, and the dowel rods grouted in place and allowed to cure (Min. 24 Hrs.) prior to grouting shear key.

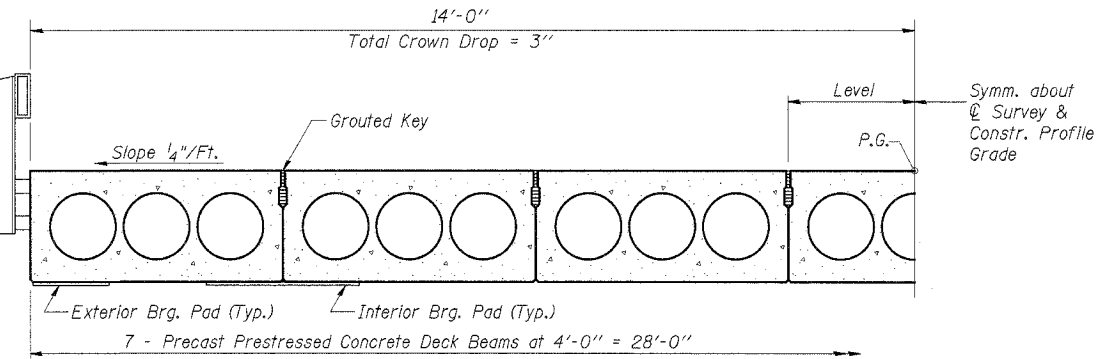


9-1/2" Strands, Each Strand Stressed to 28,900 Lbs.  
9-Strands 1 3/4" up

Note: Place strands symmetrically about center of beam.



\* Dowel Rods to be grouted after beams are in place and allowed to cure (Min. 24 hrs.) prior to grouting the shear keys.



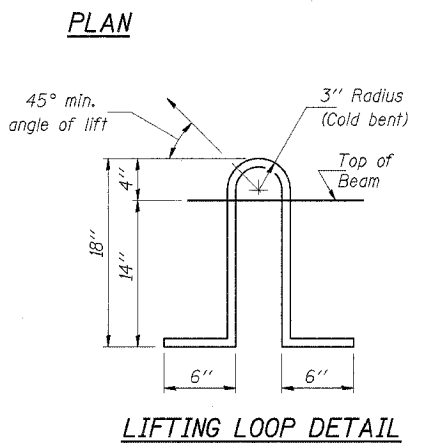
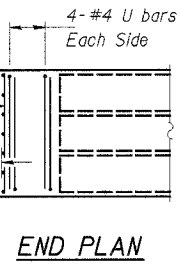
**NOTES**

Prestressing steel shall be uncoated high strength, stress-relieved 7-wire strand, Grade 270. The nominal diameter shall be 1/2" and the nominal cross-sectional area shall be 0.153 sq. in. Lifting loops shall be 2-1/2"-270 ksi strands, as shown. The 1" rods in the transverse tie assembly shall be tightened to a snug fit and the threads set. Pockets that receive transverse tie bar on outside shall be filled with grout after transverse tie assembly is in place. Reinforcement bars shall conform to the requirements of AASHTO M-31, M-42 or M-53 Grade 60. The bearing seat surfaces shall be adjusted by shimming to assure firm and even bearing. Two 1/8" fabric adjusting shims of the dimensions of the Exterior Bearing Pad shall be provided for each bearing. (64 Required) Keyway surfaces shall be cleaned to remove form oil or other bond breaking material prior to shipment of the beams. Cleaning shall be done by sandblasting the keyway areas between top of the beam and the bottom edge of the key. Required Release Strength, f'ci, shall be 4000 p.s.i. An equal substitution of the low-relaxation strands for the stress-relieved strands will be permitted. Longitudinal shear keys shall be grouted with an approved non-shrink grout. See Special Provisions for review and distribution of shop drawings. Rail post anchor devices shall be cast into outside beam as elsewhere specified.

**BILL OF MATERIAL**

Item	Unit	Quantity
Precast Prestressed Concrete Deck Beams (17" Depth)	Sq. Ft.	1,736

Estimated Total Weight (One Beam) = 19,420 Pounds



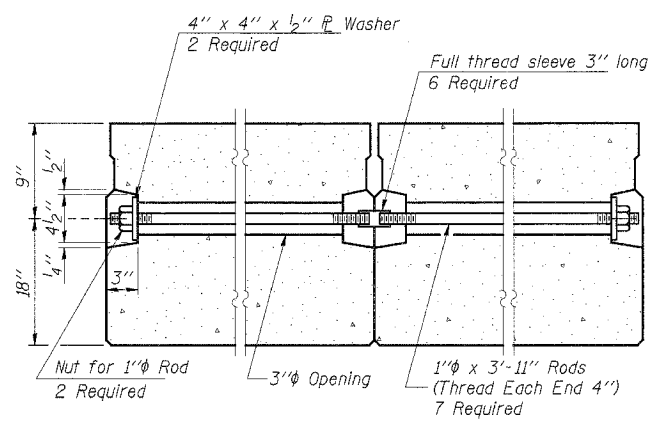
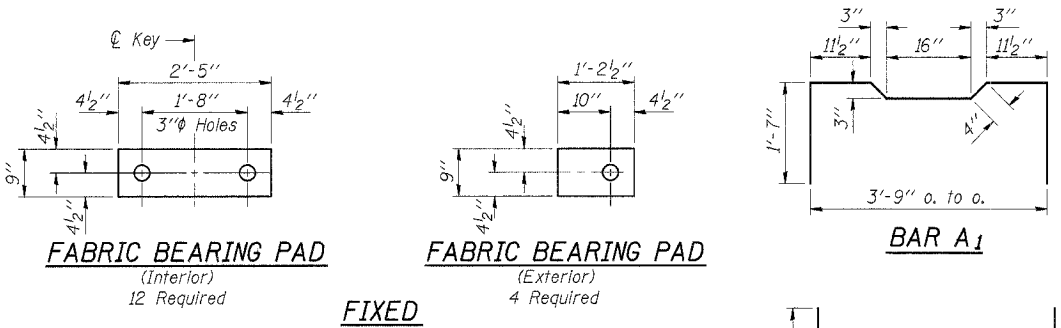
DESIGNED	M.E.B.
CHECKED	F.J.S.
DRAWN	R.S.J.
CHECKED	F.J.S.

**SUPERSTRUCTURE - SPANS 1 & 3**

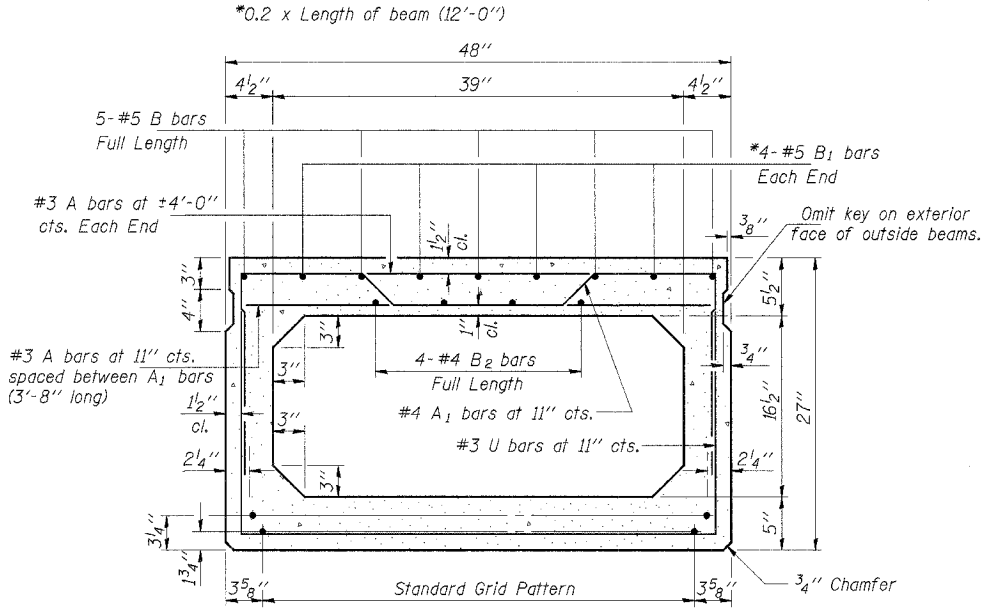
SECTION 99-01123-00-BR  
COTTONWOOD ROAD DISTRICT  
CUMBERLAND COUNTY  
STATION 5+09.25

4440 ASH GROVE SPRINGFIELD, IL 62707 (217) 793-8600 oasinc@tamvid.com	<b>OZYURT AND STONE, INC.</b> CONSULTING ENGINEERS	JOB NO.: 0018.5 FILE: SUPER13.DGN DATE: 02-19-03
--	---	--

ROUTE NO.	SECTION	COUNTY	TOTAL SHEETS	SHEET NO.
T.R. 39	99-01123-00-BR	CUMBERLAND	11	6
ROAD DISTRICT		ILLINOIS	COTTONWOOD	

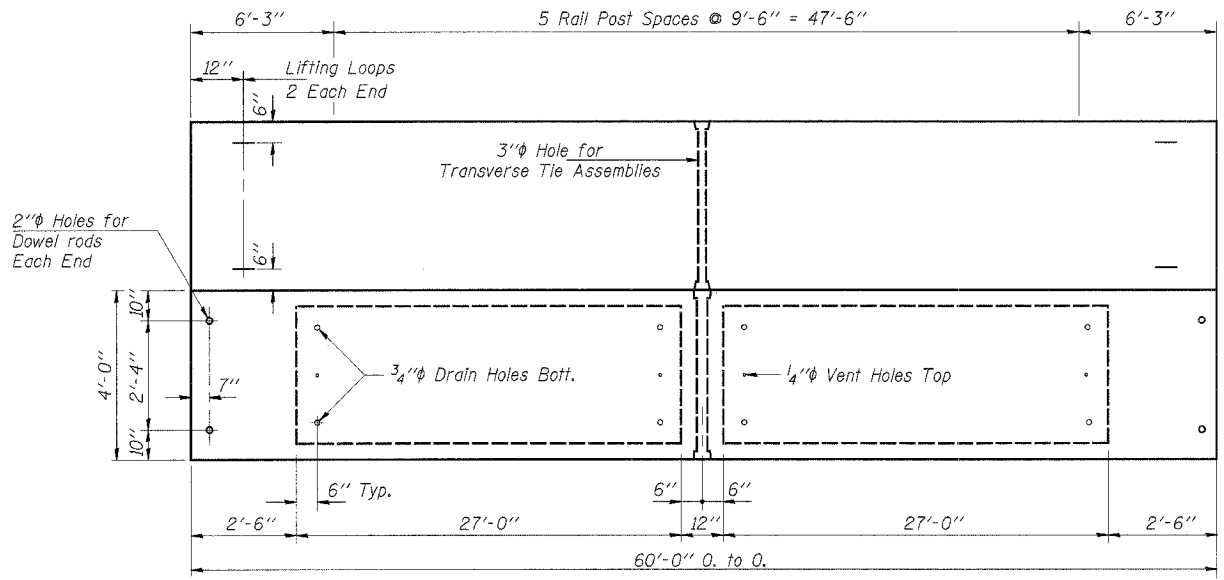


TYPICAL TRANSVERSE TIE ASSEMBLY

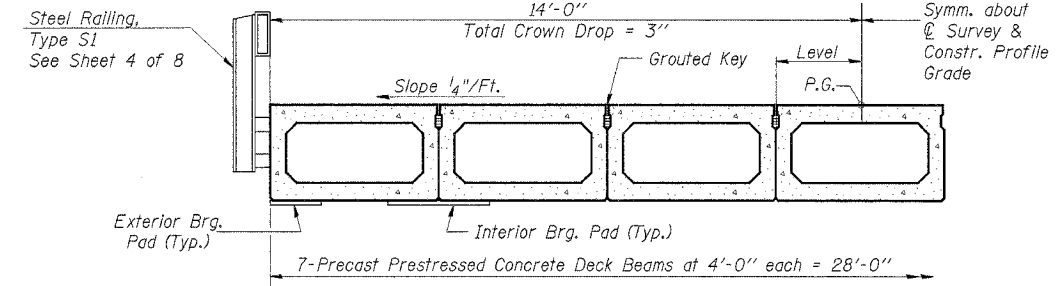


TYPICAL SECTION  
17-1/2" Strands Each Strand Stressed to 28,900 Lbs.  
14-Strands 1 3/4" up, 3-Strands 3/4" up

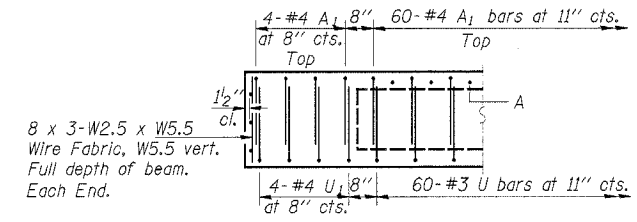
Note: Place strands symmetrically about centerline of beam.



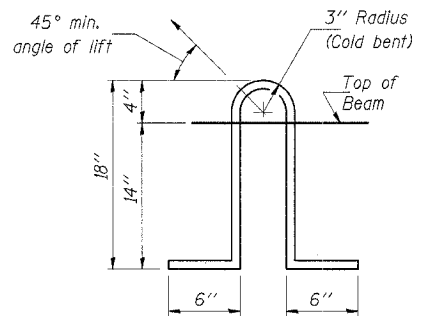
PLAN



HALF CROSS SECTION



END ELEVATION



LIFTING LOOP DETAIL

DESIGNED	M.E.B.
CHECKED	F.J.S.
DRAWN	R.S.J.
CHECKED	F.J.S.

NOTES

Prestressing steel shall be uncoated high strength, stress-relieved 7-wire strand, Grade 270. The nominal diameter shall be 1/2" and the nominal cross-sectional area shall be 0.153 sq. in. Lifting loops shall be 3-1/2" φ-270 ksi strands, as shown. The 1" φ rods in the transverse tie assembly shall be tightened to a snug fit and the threads set. Pockets that receive transverse tie bar on outside shall be filled with grout after transverse tie assembly is in place. Reinforcement bars shall conform to the requirements of AASHTO M-31, M-42 or M-53 Grade 60. The bearing seat surfaces shall be adjusted by shimming to assure firm and even bearing. Two 1/8" fabric adjusting shims of the dimensions of the Exterior Bearing Pad shall be provided for each bearing. (32 Required) Keyway surfaces shall be cleaned to remove form oil or other bond breaking material prior to shipment of the beams. Cleaning shall be done by sandblasting the keyway areas between top of the beam and the bottom edge of the key. Required Release Strength, f'ci, shall be 4000 p.s.i. An equal substitution of the low-relaxation strands for the stress-relieved strands will be permitted. Longitudinal shear keys shall be grouted with an approved non-shrink grout. See Special Provisions for review and distribution of shop drawings. Rail post anchor devices shall be cast into outside beam as elsewhere specified.

BILL OF MATERIAL

Item	Unit	Quantity
Precast Prestressed Concrete Deck Beams (27" Depth)	Sq. Ft.	1,680

Estimated Total Weight (One Beam) = 47,050 Pounds

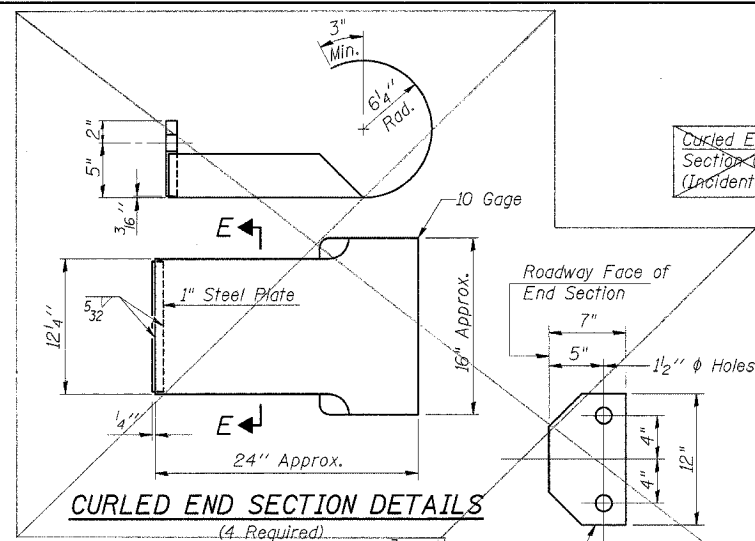
**SUPERSTRUCTURE - SPAN 2**

SECTION 99-01123-00-BR  
COTTONWOOD ROAD DISTRICT  
CUMBERLAND COUNTY  
STATION 5+09.25

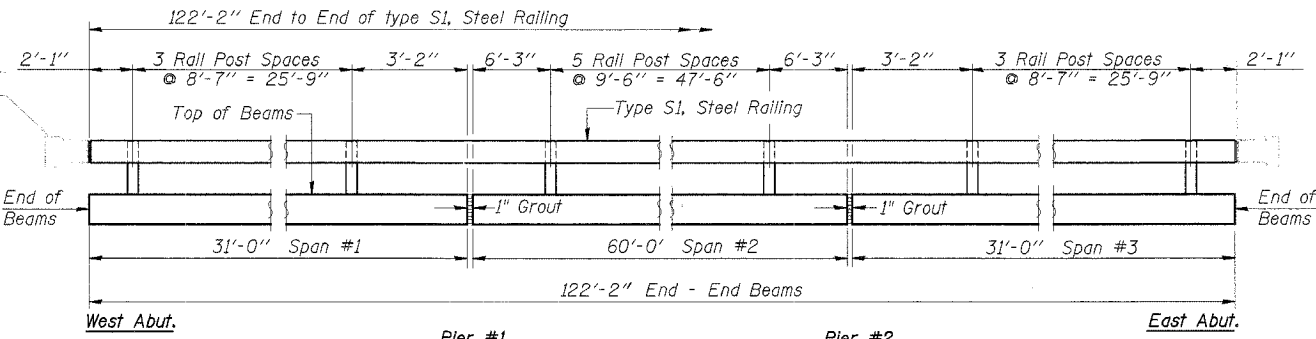
4440 ASH GROVE SPRINGFIELD, IL 62707 (217) 793-8600 oasinc@famvid.com	<b>OZYURT AND STONE, INC.</b> CONSULTING ENGINEERS
--	---

JOB NO.: 0018.5  
FILE: SUPER2.DGN  
DATE: 02-19-03

ROUTE NO.	SECTION	COUNTY	TOTAL SHEETS	SHEET NO.
T.R. 39	99-01123-00-BR	CUMBERLAND	11	7
ROAD DISTRICT	ILLINOIS		COTTONWOOD	



Curlled End Section (Typ.) (Incidental)



ELEVATION Showing Inside Face of Rail

NOTES

Hollow structural steel tubing shall conform to the requirements of ASTM designation A-500 Grade B Structural Steel Tubing and shall meet the longitudinal CVN requirements of 15 Ft.-Lbs. at 0°F.

All other steel shapes and plates shall conform to the requirements of AASHTO M-270, Grade 36 except posts and angles shall conform to AASHTO M-270, Grade 50.

Bolts, cap screws, and nuts shall conform to the requirement of ASTM designation A-307 except for high strength bolts, nuts and washers noted which shall conform to AASHTO M-164.

All bolts, nuts, cap screws, washers and lock washers shall be galvanized in accordance with AASHTO M-232.

All posts, railing, rail splices, anchor devices, angles and spacers shall be galvanized after shop fabrication in accordance with AASHTO M-111 and ASTM A-385. Galvanized rail shall not be painted.

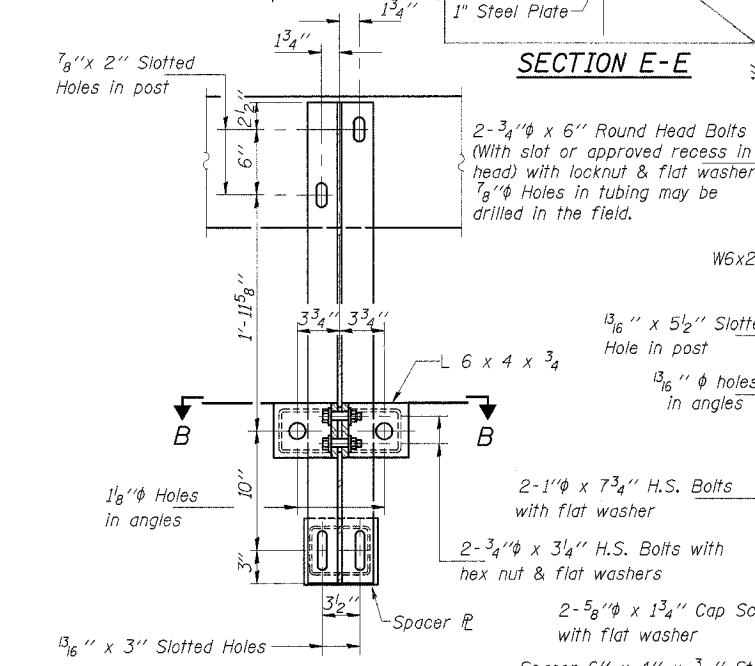
Railing shall be in accordance with Section 509 of the Standard Specifications, except as noted, and will be paid for at the contract unit price per foot for STEEL RAILING, TYPE S1.

All field drilled holes shall be coated with an approved zinc rich paint before erection.

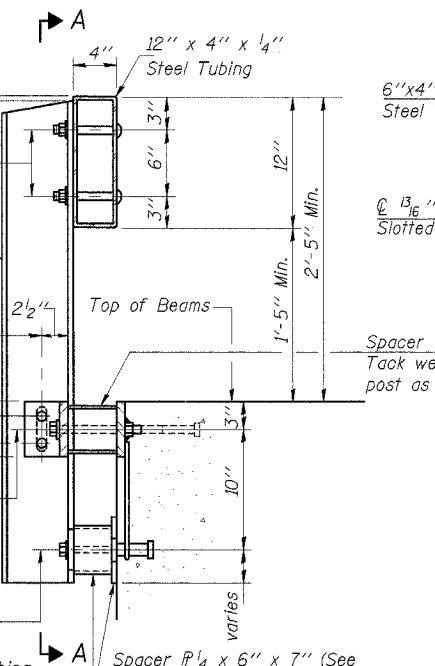
The lower plate of the post spacer in contact with concrete shall receive two coats of asphalt paint conforming to Section 1060.07 Type II or place 1/8\"/>

The 3/4\"/>

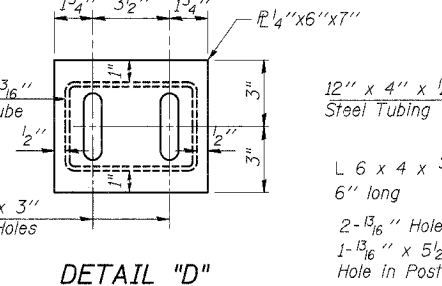
The 1\"/>



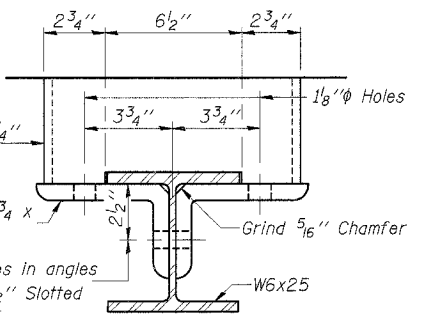
SECTION E-E



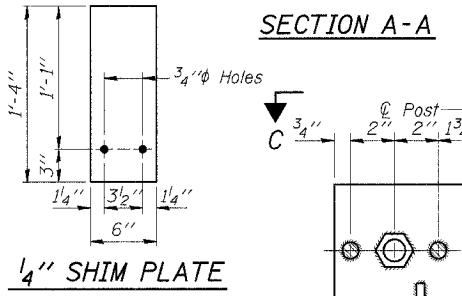
SECTION AT RAIL POST



DETAIL "D"



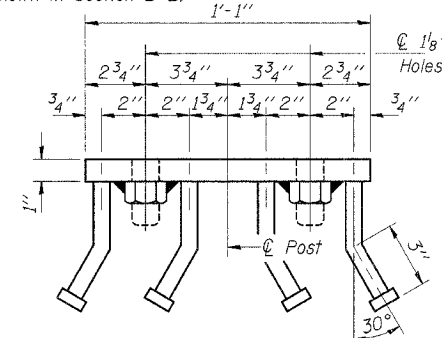
SECTION B-B



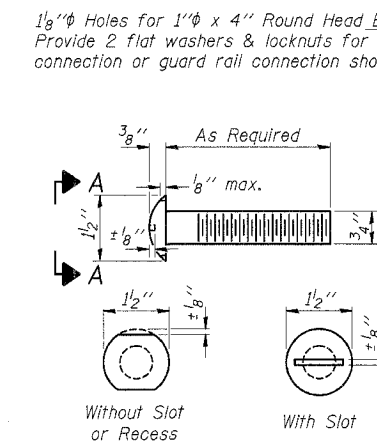
SECTION A-A

1/4\"/>

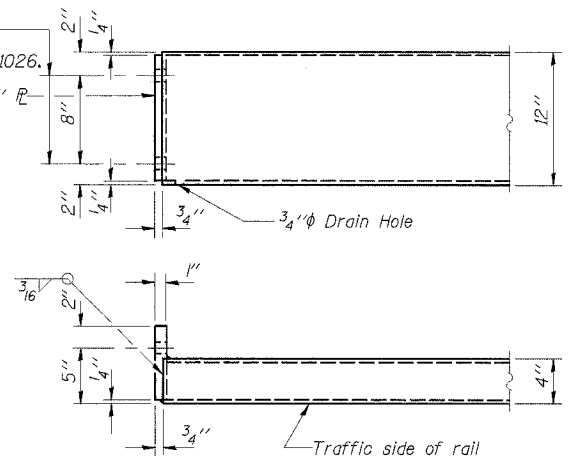
Note: For multi-span bridges, sufficient 1/4\"/>



VIEW C-C



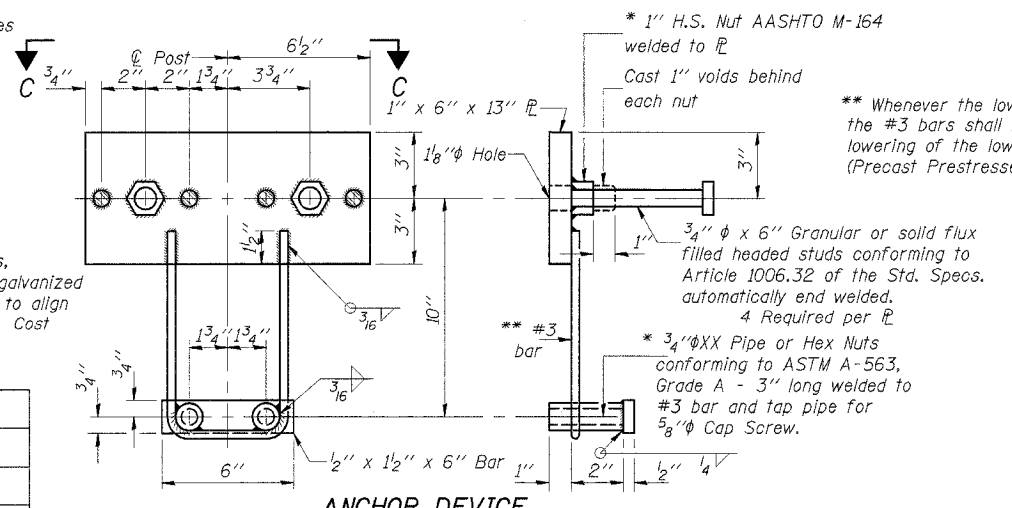
VIEW A-A ROUND HEAD BOLT



END OF RAIL DETAILS

BILL OF MATERIAL

Item	Unit	Quantity
Steel Railing, Type S1	Foot	245

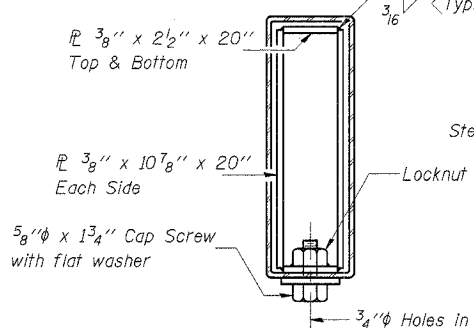


ANCHOR DEVICE

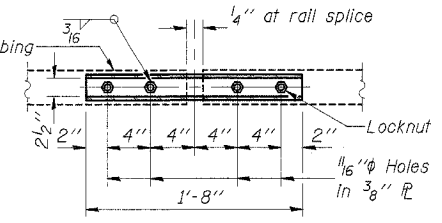
\* Threaded areas shall be plugged or blocked off during casting of beam.

\*\* Whenever the lower insert assemblies interfere with strand locations, the #3 bars shall be cut and adjusted in order to allow raising or lowering of the lower inserts. Maximum adjustment not to exceed 1/2\"/>

(Precast Prestressed Concrete Deck Beam Bridges Only)



SECTIONS AT RAIL SPLICE



PLAN-BOTT. SPLICE TYPICAL

DESIGNED	M.E.B.
CHECKED	F.J.S.
DRAWN	R.S.J.
CHECKED	F.J.S.

STEEL RAILING, TYPE S1 SECTION 99-01123-00-BR COTTONWOOD ROAD DISTRICT CUMBERLAND COUNTY STATION 5+09.25

OZYURT AND STONE, INC. CONSULTING ENGINEERS

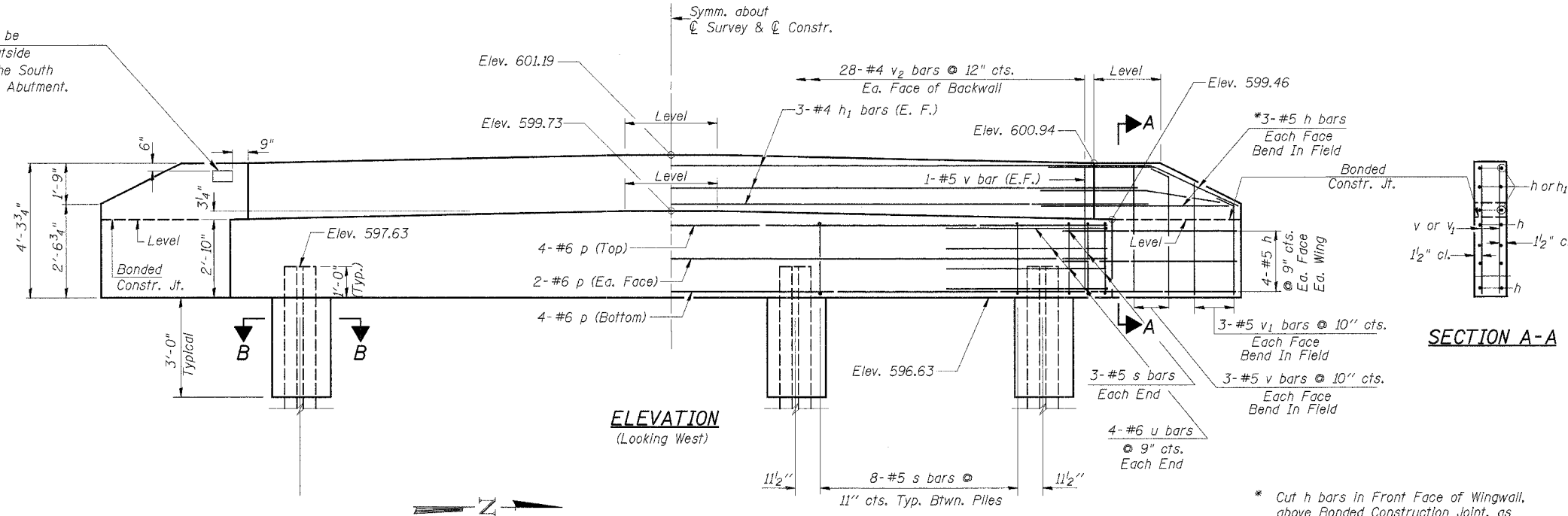
JOB NO.	0018.5
FILE	RAIL.DGN
DATE	02-19-03

4440 ASH GROVE  
SPRINGFIELD, IL 62707  
(217) 793-8600  
casinc@famvid.com

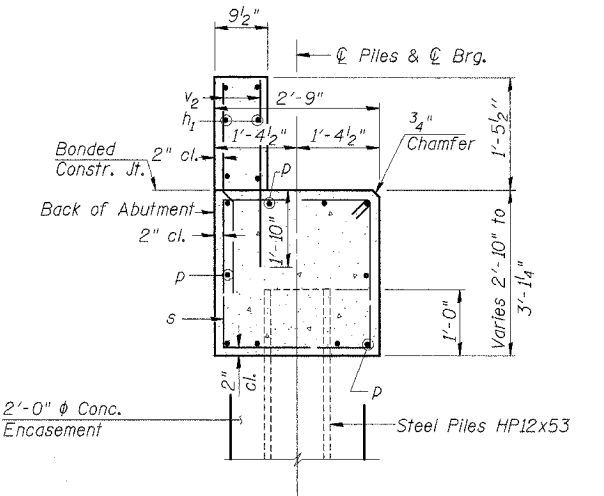
ROUTE NO.	SECTION	COUNTY	TOTAL SHEETS	SHEET NO.
T.R. 39	99-01123-00-BR	CUMBERLAND	11	8
ROAD DISTRICT	ILLINOIS	COTTONWOOD		

Sheet 5 of 8

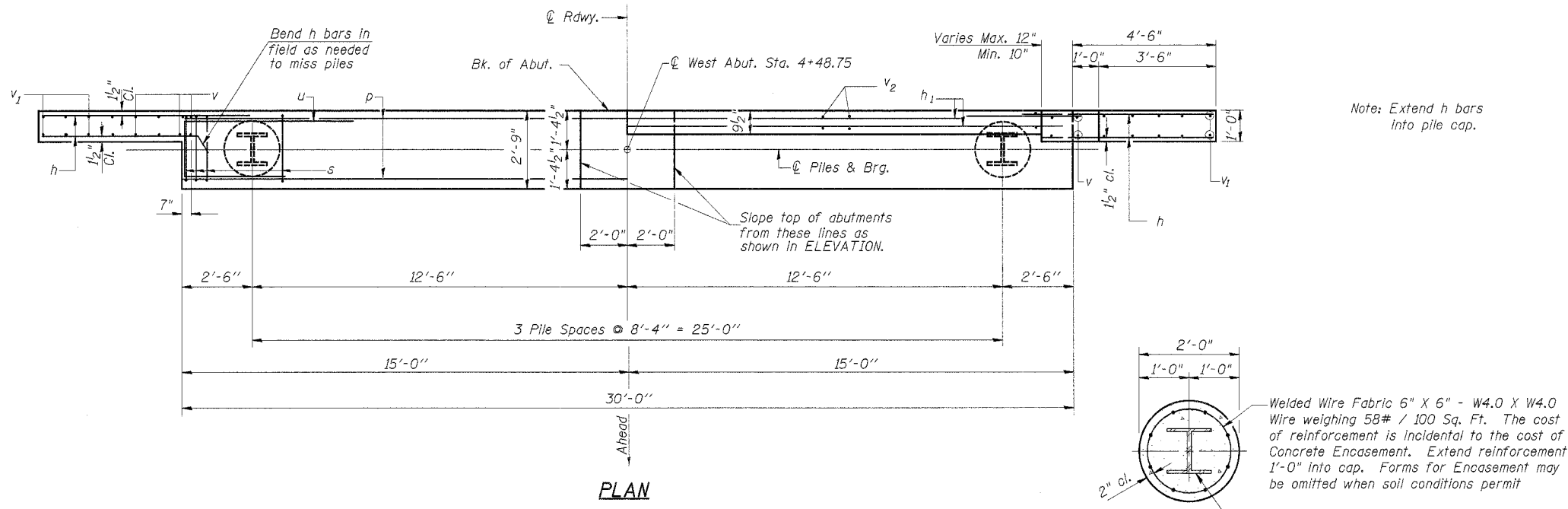
Name Plate shall be placed on the outside at the face of the South Wing of the West Abutment.



NOTE: After beams are in place and dowel rods grouted, the backwall and the portions of the wingwalls above the bonded construction joint shall be poured.



\* Cut h bars in Front Face of Wingwall, above Bonded Construction Joint, as required to fit.

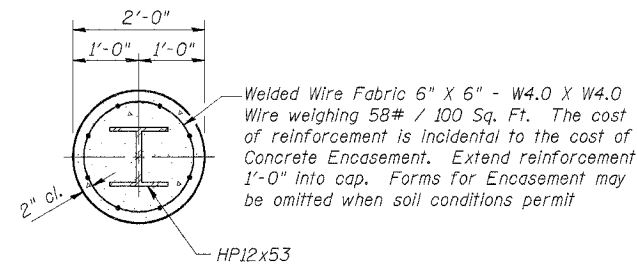


Note: Extend h bars into pile cap.

**BILL OF MATERIAL - W. ABUT.**

BAR	NO.	SIZE	LENGTH	SHAPE
h	28	#5	6'-1"	—
h1	6	#4	32'-0"	—
p	10	#6	29'-8"	—
s	30	#5	10'-9"	□
u	8	#6	12'-4"	—
v	16	#5	4'-0"	—
v1	12	#5	3'-2"	—
v2	56	#4	3'-2"	—
			Cu. Yd.	11.6
Concrete Structures				
Reinforcement Bars			Pound	1,470
Test Pile Steel HP12x53			Each	1
Steel Piles HP12x53			Foot	72
Name Plates			Each	1
Concrete Encasement			Cu. Yd.	1.4

**SECTION B-B**

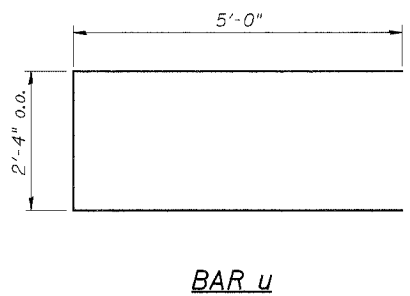
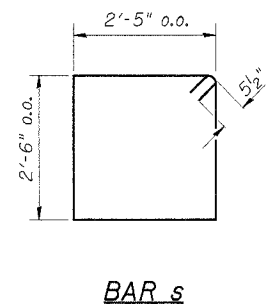


**PILE DATA**

Type \_\_\_\_\_ Steel HP12x53  
 No. Req'd. \_\_\_\_\_ \*\* 4  
 Capacity \_\_\_\_\_ Drive to Refusal  
 Est. Length \_\_\_\_\_ 24 Feet/Pile

\*\*Includes one Test Pile to be driven in a permanent location at the West Abutment.

DESIGNED	M.E.B.
CHECKED	F.J.S.
DRAWN	R.S.J.
CHECKED	F.J.S.



**WEST ABUTMENT**

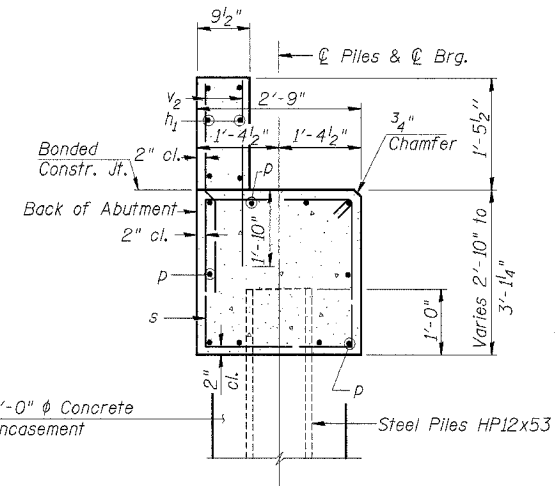
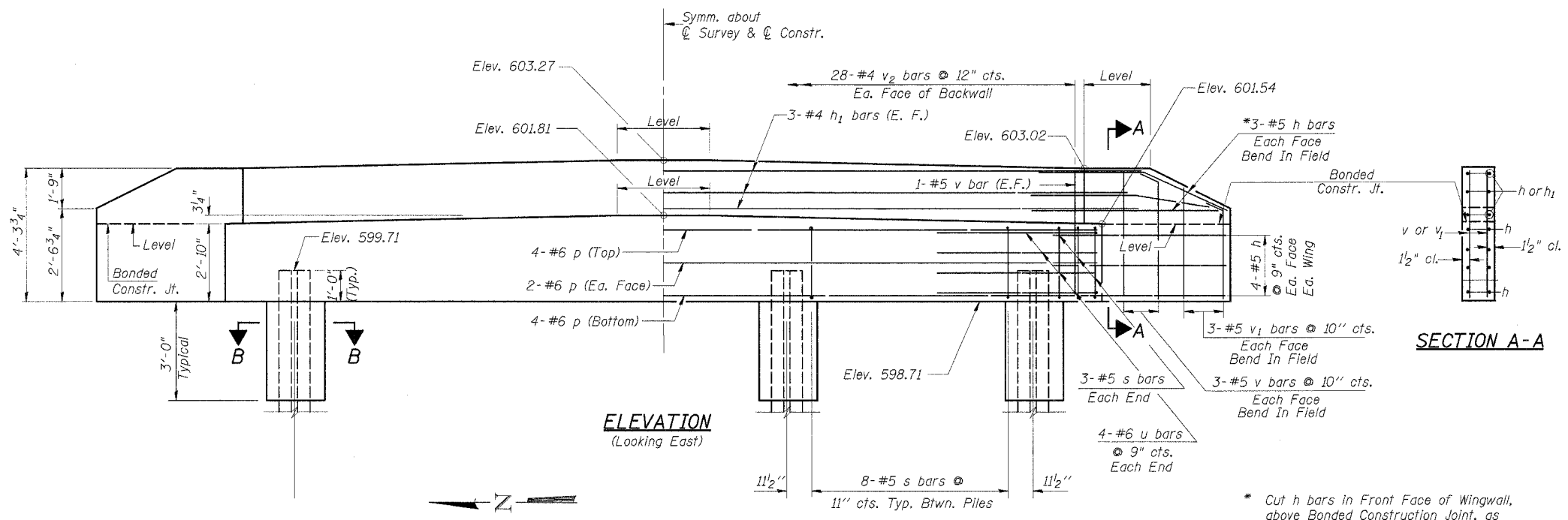
SECTION 99-01123-00-BR  
 COTTONWOOD ROAD DISTRICT  
 CUMBERLAND COUNTY  
 STATION 5+09.25

4440 ASH GROVE SPRINGFIELD, IL 62707 (217) 793-8600 oasinc@tamvid.com	<b>OZYURT AND STONE, INC.</b> CONSULTING ENGINEERS	JOB NO.: 0018.5 FILE: ABUT.DGN DATE: 02-19-03
--	---	---



ROUTE NO.	SECTION	COUNTY	TOTAL SHEETS	SHEET NO.
T.R. 39	99-01123-00-BR	CUMBERLAND	11	9
ROAD DISTRICT	ILLINOIS		COTTONWOOD	

Sheet 6 of 8

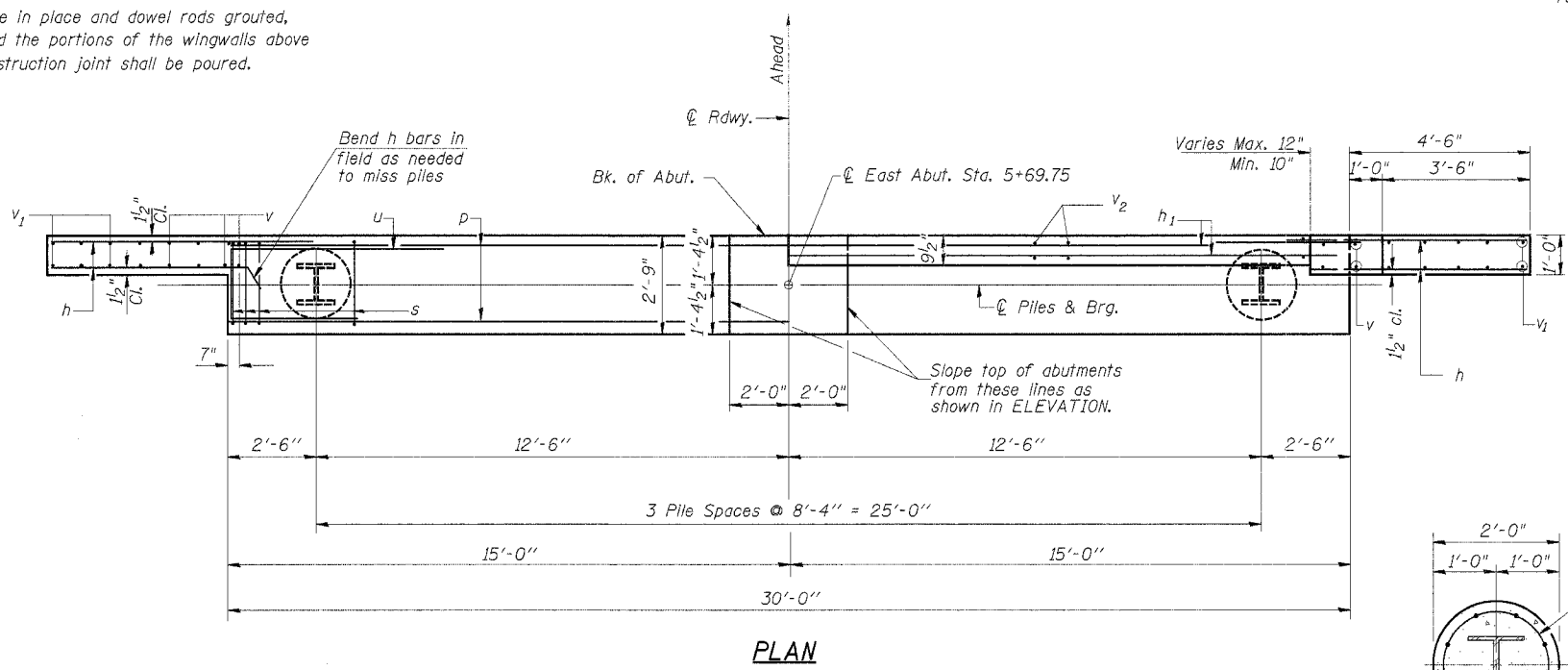


SECTION A-A

SECTION THRU ABUT.

\* Cut h bars in Front Face of Wingwall, above Bonded Construction Joint, as required to fit.

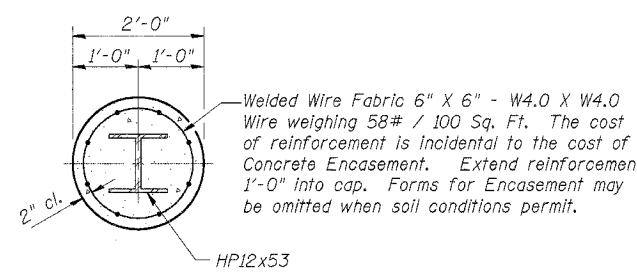
NOTE: After beams are in place and dowel rods grouted, the backwall and the portions of the wingwalls above the bonded construction joint shall be poured.



Note: Extend h bars into pile cap.

BILL OF MATERIAL - E. ABUT.

BAR	NO.	SIZE	LENGTH	SHAPE
h	28	#5	6'-1"	—
h1	6	#4	32'-0"	—
p	10	#6	29'-8"	—
s	30	#5	10'-9"	□
u	8	#6	12'-4"	—
v	16	#5	4'-0"	—
v1	12	#5	3'-2"	—
v2	56	#4	3'-2"	—
Concrete Structures			Cu. Yd.	11.6
Reinforcement Bars			Pound	1,470
Steel Piles HP12x53			Foot	78
Concrete Encasement			Cu. Yd.	1.4
Test Pile Steel HP12x53			Each	1

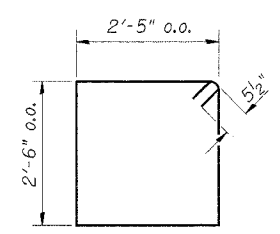


SECTION B-B

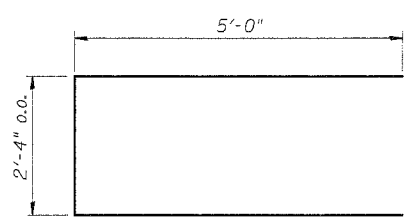
PILE DATA

Type \_\_\_\_\_ Steel HP12x53  
 No. Req'd. \_\_\_\_\_ \*\*4  
 Capacity \_\_\_\_\_ Drive to Refusal  
 Est. Length \_\_\_\_\_ 26 Feet/Pile

\*\*Includes one Test Pile to be driven in a permanent location at the East Abutment.



BAR s



BAR u

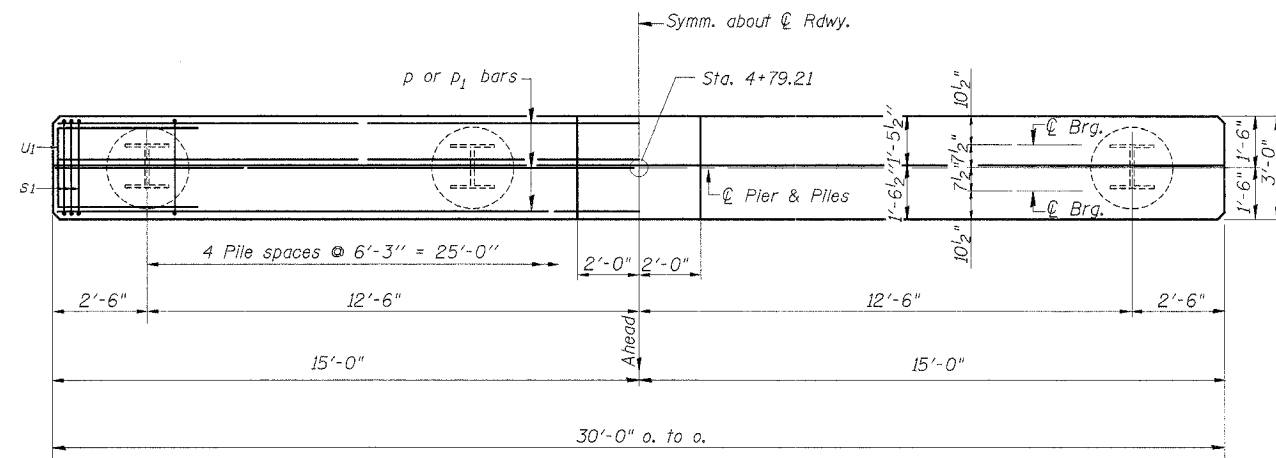
DESIGNED	M.E.B.
CHECKED	F.J.S.
DRAWN	R.S.J.
CHECKED	F.J.S.

**EAST ABUTMENT**  
 SECTION 99-01123-00-BR  
 COTTONWOOD ROAD DISTRICT  
 CUMBERLAND COUNTY  
 STATION 5+09.25

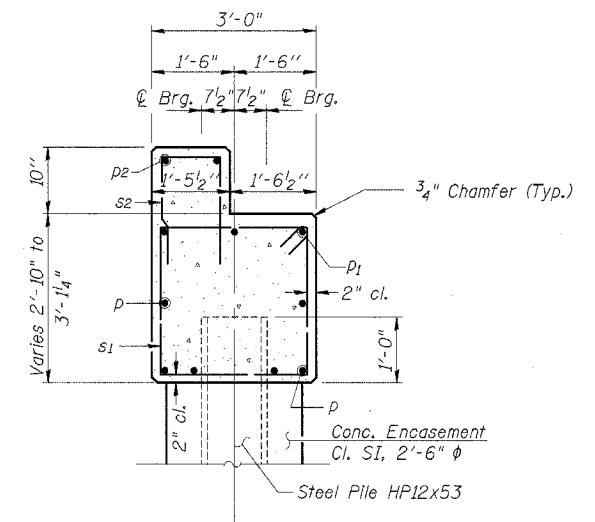
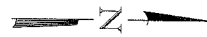
4440 ASH GROVE SPRINGFIELD, IL 62707 (217) 793-8600 oasinc@famvid.com	<b>OZYURT AND STONE, INC.</b> CONSULTING ENGINEERS
JOB NO.: 0018.5 FILE: ABUT2.DGN DATE: 02-19-03	

ROUTE NO.	SECTION	COUNTY	TOTAL SHEETS	SHEET NO.
T.R. 39	99-01123-00-BR	CUMBERLAND	11	10
ROAD DISTRICT		ILLINOIS	COTTONWOOD	

Note: All edges shall have standard 3/4" chamfer

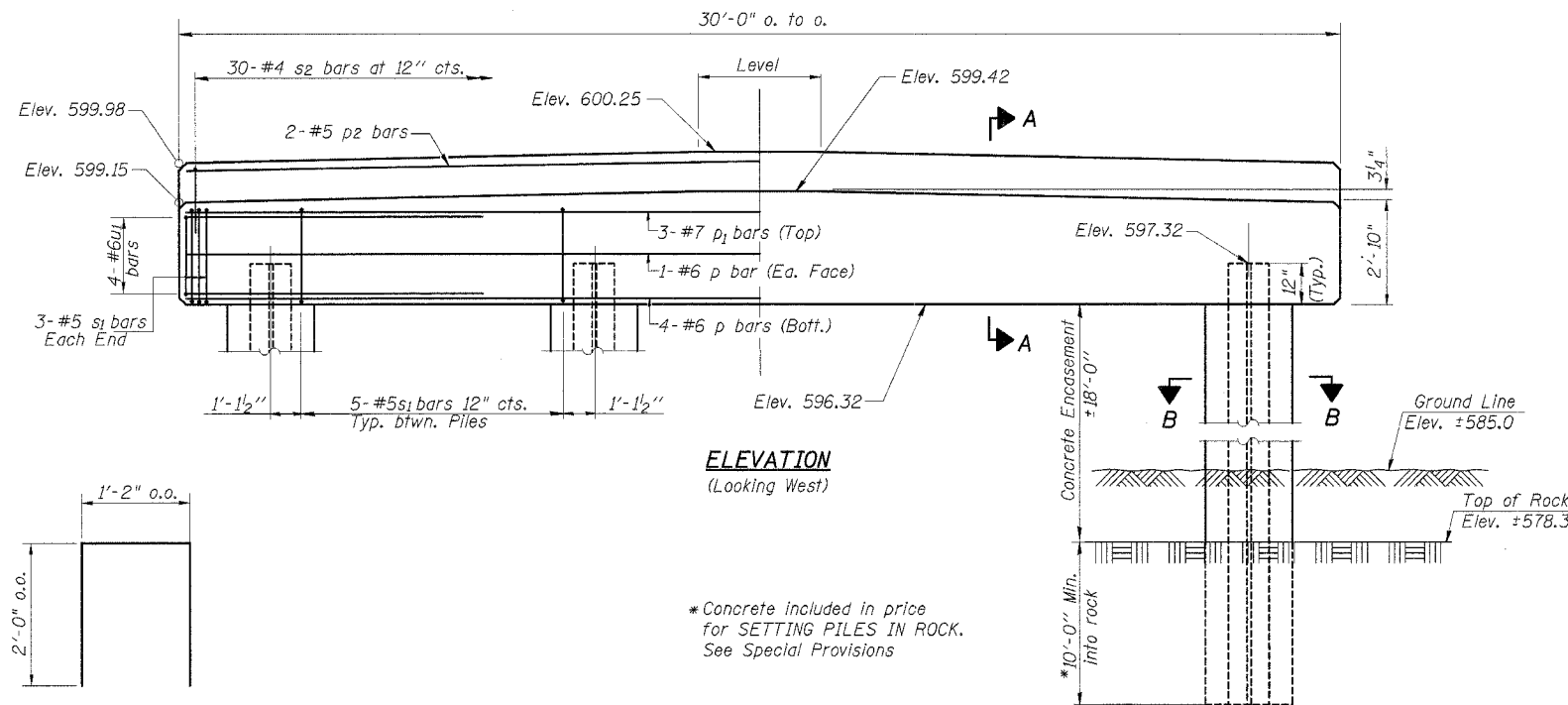


PLAN



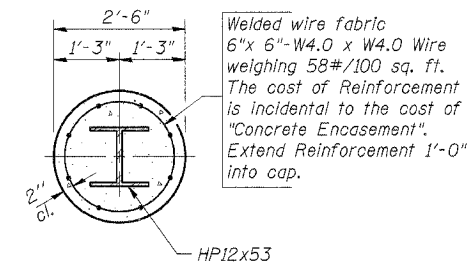
SECTION A-A  
(Looking North)

Note A: Precore through the existing earth and rock as shown. Piles shall be grouted into the rock with Concrete. Precored holes shall be clean at time of placement and grouting. See Special Provisions.



ELEVATION  
(Looking West)

\* Concrete included in price for SETTING PILES IN ROCK. See Special Provisions



SECTION B-B

BILL OF MATERIAL - PIER 1

BAR	NO.	SIZE	LENGTH	SHAPE
p	6	#6	29'-8"	—
p1	3	#7	29'-8"	—
p2	2	#5	29'-8"	—
s1	26	#5	11'-3"	□
s2	30	#4	5'-2"	□
u	8	#6	12'-7"	—
Concrete Structures			Cu. Yd.	11.3
Reinforcement Bars			Pound	1,080
Furnishing Steel Piles HP12x53			Foot	145
Concrete Encasement			Cu. Yd.	16.4
Setting Piles in Rock			Each	5

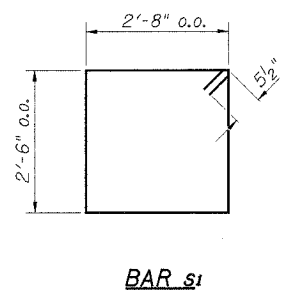
PILE DATA

Type \_\_\_\_\_ HP12x53  
 Capacity \_\_\_\_\_ Set in Rock (See Note A)  
 Est. Length \_\_\_\_\_ 29 Feet/Pile  
 No. Req'd (1 Pier) \_\_\_\_\_ 5

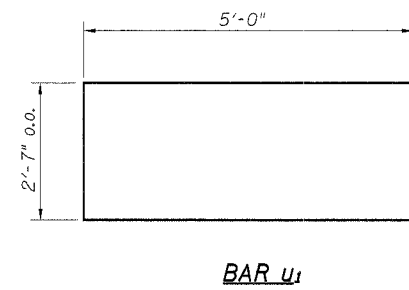
PIER 1

SECTION 99-01123-00-BR  
 COTTONWOOD ROAD DISTRICT  
 CUMBERLAND COUNTY  
 STATION 5+09.25

DESIGNED	M.E.B.
CHECKED	F.J.S.
DRAWN	R.S.J.
CHECKED	F.J.S.



BAR s2

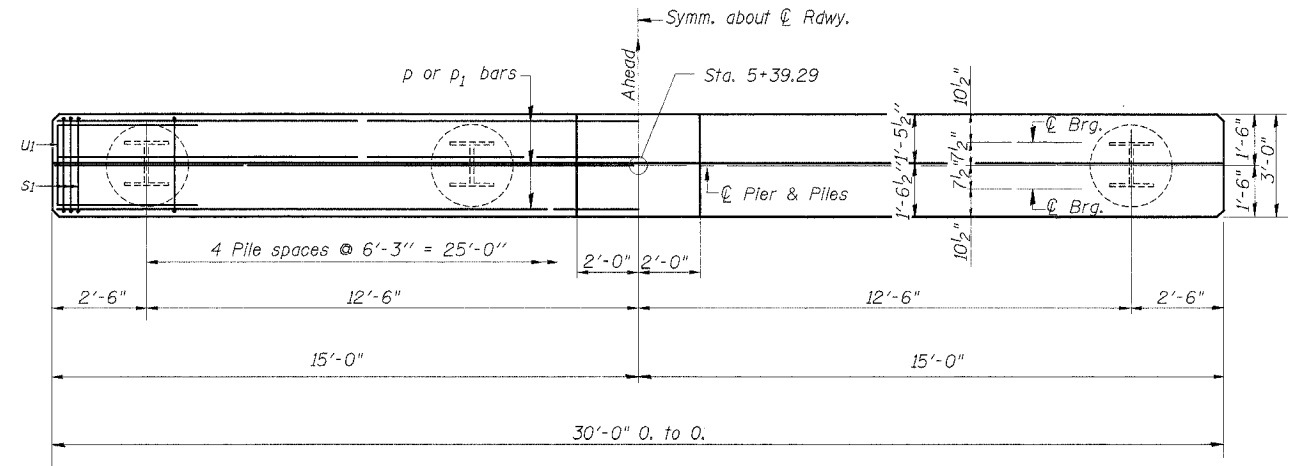


BAR u1

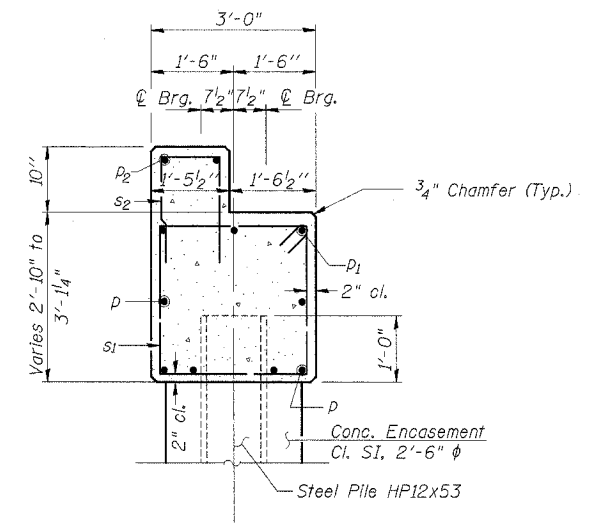
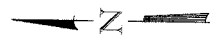
4440 ASH GROVE SPRINGFIELD, IL 62707 (217) 793-8500 casinc@famvid.com	<b>OZYURT AND STONE, INC.</b> CONSULTING ENGINEERS	JOB NO.: 0018.5 FILE: PIER.DGN DATE: 02-19-03
--	---	---

ROUTE NO.	SECTION	COUNTY	TOTAL SHEETS	SHEET NO.
T.R. 39	99-01123-00-BR	CUMBERLAND	//	//
ROAD DISTRICT	ILLINOIS	COTTONWOOD		

Note: All edges shall have standard 3/4" chamfer

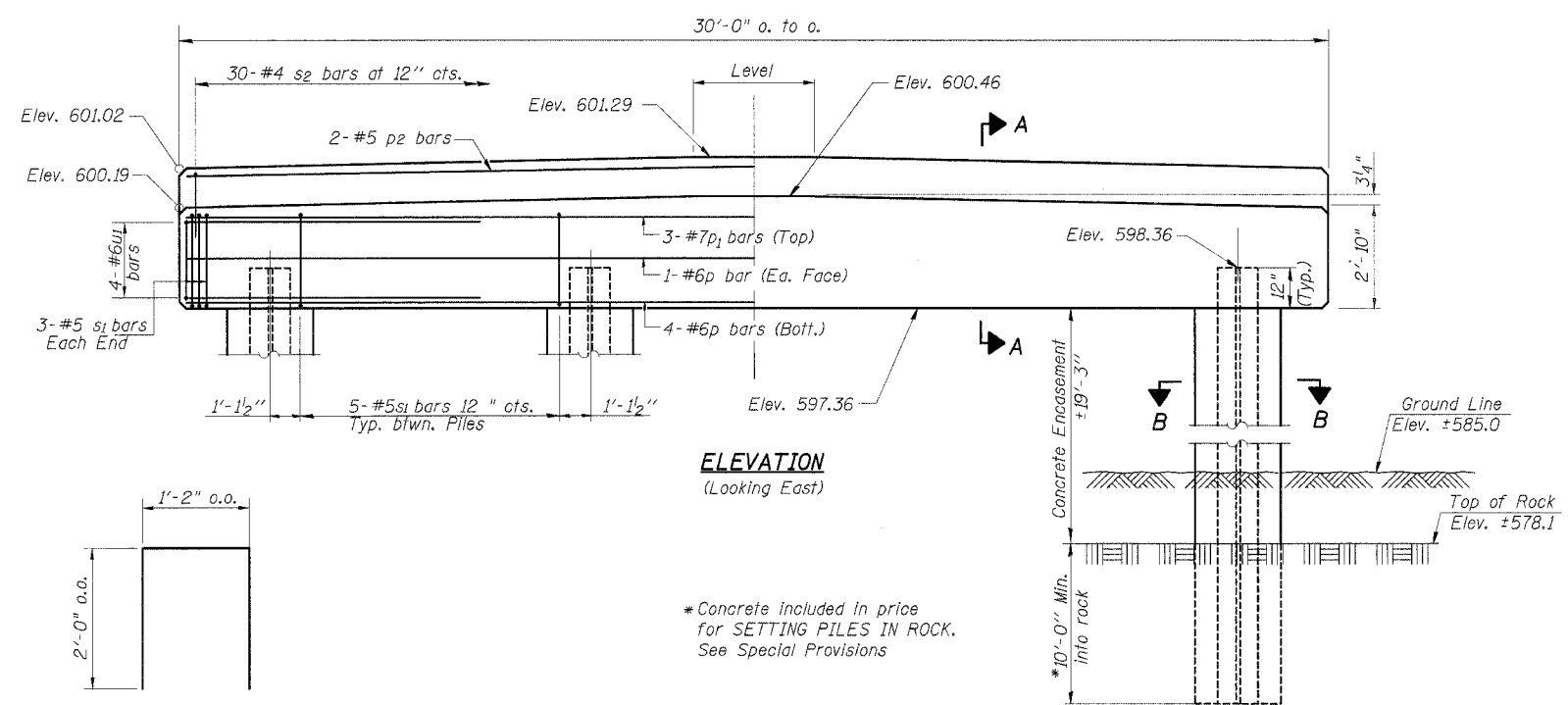


PLAN

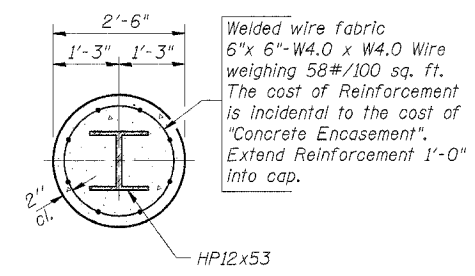


SECTION A-A  
(Looking South)

Note A: Precore through the existing earth and rock as shown. Piles shall be grouted into the rock with Concrete. Precored holes shall be clean at time of placement and grouting. See Special Provisions.



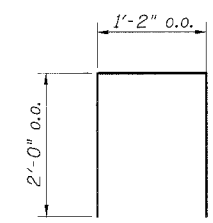
ELEVATION  
(Looking East)



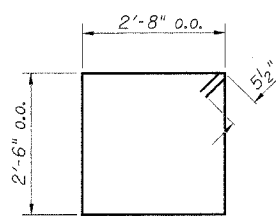
SECTION B-B

BILL OF MATERIAL - PIER 2

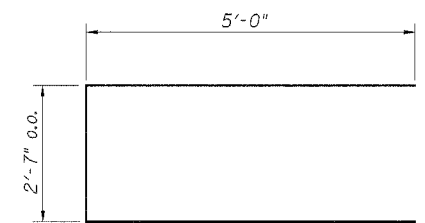
BAR	NO.	SIZE	LENGTH	SHAPE	
p	6	#6	29'-8"	—	
p1	3	#7	29'-8"	—	
p2	2	#5	29'-8"	—	
s1	26	#5	11'-3"	□	
s2	30	#4	5'-2"	□	
u1	8	#6	12'-7"	—	
Concrete Structures				Cu. Yd.	11.3
Reinforcement Bars				Pound	1,080
Furnishing Steel Piles HP12x53				Foot	155
Concrete Encasement				Cu. Yd.	17.5
Setting Piles in Rock				Each	5



BAR s2



BAR s1



BAR u1

PILE DATA

Type: HP12x53  
Capacity: Set in Rock (See Note A)  
Est. Length: 31 Feet/Pile  
No. Req'd (1 Pier): 5

DESIGNED	M.E.B.
CHECKED	F.J.S.
DRAWN	R.S.J.
CHECKED	F.J.S.

**PIER 2**

SECTION 99-01123-00-BR  
COTTONWOOD ROAD DISTRICT  
CUMBERLAND COUNTY  
STATION 5+09.25

4440 ASH GROVE SPRINGFIELD, IL 62707 (217) 793-8600 oasinc@famvid.com	<b>OZYURT AND STONE, INC.</b> CONSULTING ENGINEERS
JOB NO.: 0018.5 FILE: PIER2.DGN DATE: 02-19-03	