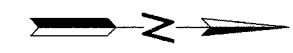
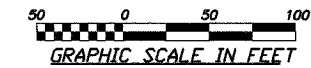


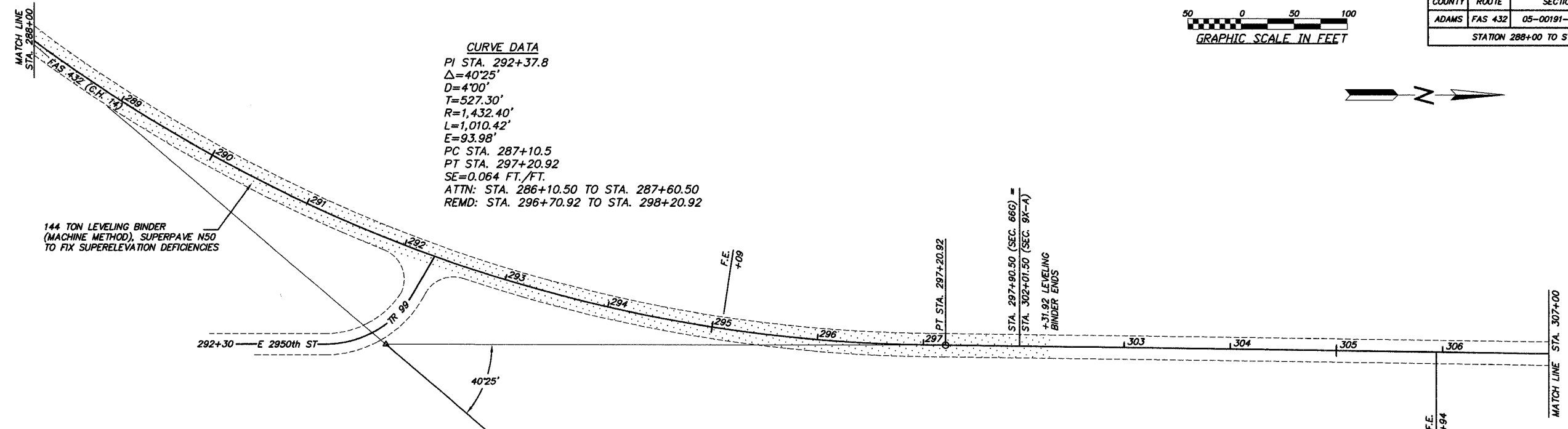
COUNTY	ROUTE	SECTION	TOTAL SHEETS	SHEET NO.
ADAMS	FAS 432	05-00191-00-RS	15	13

STATION 288+00 TO STATION 339+00



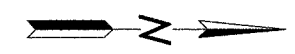
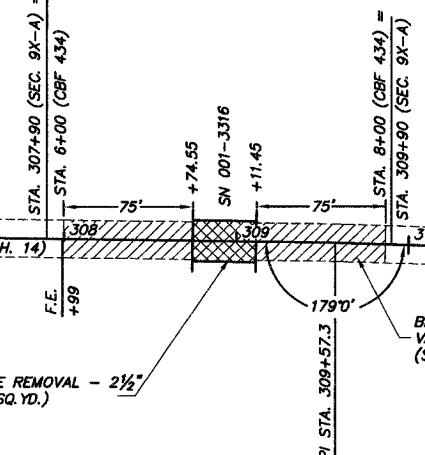
CURVE DATA
 PI STA. 292+37.8
 $\Delta=40'25''$
 D=4'00"
 T=527.30'
 R=1,432.40'
 L=1,010.42'
 E=93.98'
 PC STA. 287+10.5
 PT STA. 297+20.92
 SE=0.064 FT./FT.
 ATTN: STA. 286+10.50 TO STA. 287+60.50
 REMD: STA. 296+70.92 TO STA. 298+20.92

144 TON LEVELING BINDER (MACHINE METHOD), SUPERPAVE N50 TO FIX SUPERELEVATION DEFICIENCIES



BITUMINOUS SURFACE REMOVAL - VARIABLE DEPTH (2 @ 183.5 SQ. YD. EA.) (SEE SHEET NO. 15)

BITUMINOUS SURFACE REMOVAL - 2 1/2" (BRIDGE DECK) (91 SQ. YD.)



CURVE DATA
 PI STA. 337+96.0
 $\Delta=16'15''$
 D=6'00"
 T=136.3'
 R=955.4'
 L=270.8'
 E=9.68'
 PC STA. 336+59.7
 PT STA. 339+30.5
 SE=0.060 FT./FT.
 ATTN: STA. 336+29.4 TO STA. 337+09.7
 REMD: STA. 338+80.5 TO STA. 340+30.5

CURVE DATA
 PI STA. 334+69.0
 $\Delta=18'22''$
 D=7'00"
 T=132.3'
 R=818.6'
 L=262.4'
 E=10.63'
 PC STA. 333+36.7
 PT STA. 335+99.1
 SE=0.060 FT./FT.
 ATTN: STA. 332+36.7 TO STA. 333+86.7
 REMD: STA. 335+49.1 TO STA. 336+29.4

71 TON LEVELING BINDER (MACHINE METHOD), SUPERPAVE N50 TO FIX SUPERELEVATION DEFICIENCIES

73 TON LEVELING BINDER (MACHINE METHOD), SUPERPAVE N50 TO FIX SUPERELEVATION DEFICIENCIES

