

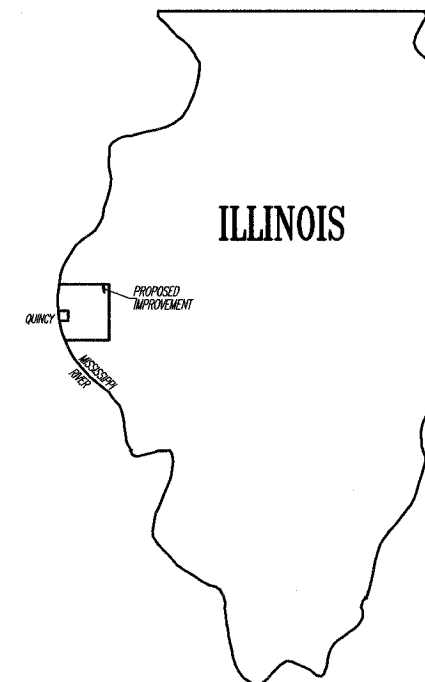
COUNTY	ROUTE	SECTION	TOTAL SHEETS	SHEET NO.
ADAMS	FAS 432	05-00194-00-RS	12	1

INDEX OF SHEETS:

SHEET NO.	SHEET
1	TITLE SHEET
2	SUMMARY OF QUANTITIES
	GENERAL NOTES
3	TYPICAL CROSS SECTIONS
4-11	PLAN SHEETS
12	SIDE ROAD & ENTRANCE DETAILS
	BUTT JOINT DETAIL
	BITUMINOUS SURFACE REMOVAL DETAIL
STANDARD	701301-02
STANDARD	701306-01
STANDARD	702001-05
STANDARD	BLR 24-1

STATE OF ILLINOIS
DEPARTMENT OF TRANSPORTATION
DIVISION OF HIGHWAYS
PLANS FOR PROPOSED
SURFACE TRANSPORTATION/RURAL PROGRAM
LOCAL AGENCY PAVEMENT PRESERVATION

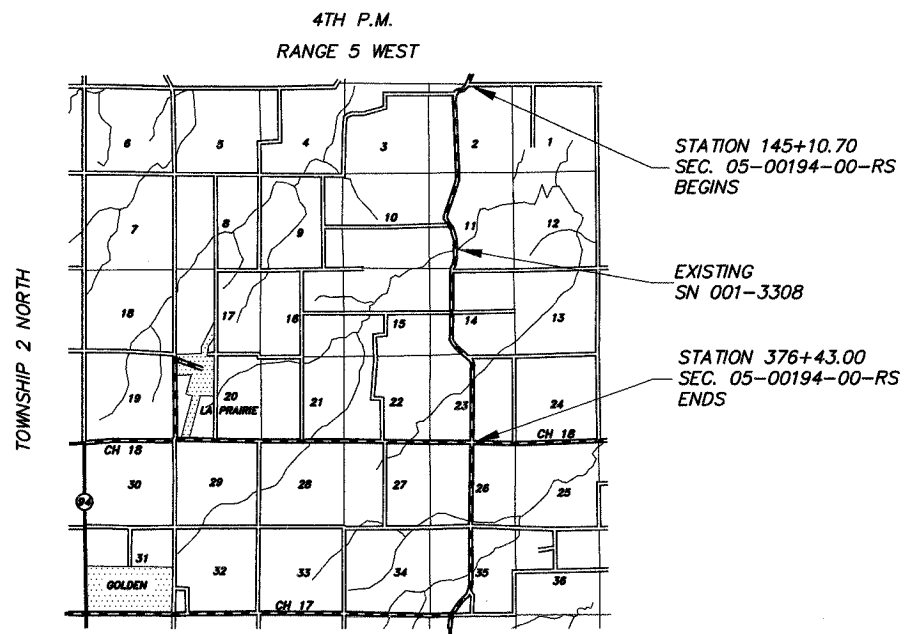
(C.H. 14) FAS 432 SECTION 05-00194-00-RS ADAMS COUNTY
PROJECT NO. RS-432(120) JOB NO. C-96-213-05



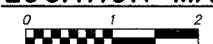
PROPOSED IMPROVEMENT MARKED THUS —

THESE PLANS WERE PREPARED BY ME OR BY A FULL-TIME MEMBER OF MY STAFF WORKING UNDER MY PERSONAL SUPERVISION.

SUBMITTED BY Richard A. Klump DATE 4-14-05
COUNTY ENGINEER
LICENSE NO. 062-032961
LIC. EXPIRES 11/30/2005



LOCATION MAP



FUNCTIONAL CLASS: MAJOR COLLECTOR (NON-URBAN)
ADT = 400

PROPOSED IMPROVEMENT CONSISTS OF PLACING 2" POLYMERIZED BITUMINOUS CONCRETE SURFACE COURSE, SUPERPAVE, MIX "C", N50 ON THE EXISTING 22' ROADWAY WITH OTHER MISCELLANEOUS CONSTRUCTION

UTILITIES:

J.U.L.I.E.	1-800-892-0123
ADAMS TELEPHONE	GOLDEN, IL
ADAMS RURAL ELECTRICAL CO-OP	CAMP POINT, IL
CLAYTON-CAMP POINT WATER DISTRICT	CLAYTON, IL
WIPCO	CARTHAGE, IL

GROSS LENGTH:
STA. 145+10.70 TO STA. 376+43.00 = 23,132.30 FT.
NET LENGTH TO BE IMPROVED: 23,132.30 FT. = 4.381 MILES

APPROVED <u>April 14th</u>	2005
<u>Richard A. Klump</u>	COUNTY ENGINEER
PASSED <u>June 2</u>	2005
<u>W.R. Fry</u>	DISTRICT ENGINEER OF CONSTRUCTION
PASSED <u>Co-1</u>	2005
<u>Terry Paul</u>	DISTRICT ENGINEER OF LOCAL ROADS AND STREETS
APPROVED <u>June 1</u>	2005
<u>Christina M. Reed</u>	DEPUTY DIRECTOR OF HIGHWAYS REGION FOUR ENGINEER
STATE OF ILLINOIS DEPARTMENT OF TRANSPORTATION	

CONTRACT NO. 93398