

STATE OF ILLINOIS  
DEPARTMENT OF TRANSPORTATION  
DIVISION OF HIGHWAYS

PROPOSED LOCAL AGENCY  
FEDERAL-AID SECONDARY PROJECT

ROUTE SECTION PROJECT  
MARION COUNTY

FAU 8591, FAS 792, FAS 791

05-00090-00-RS  
01-00117-00-RS

SR-M-0792(103)

C-97-049-93

ROUTE	SECTION	COUNTY	TOTAL SHEETS	SHEET NO.
*	**	MARION	4	1

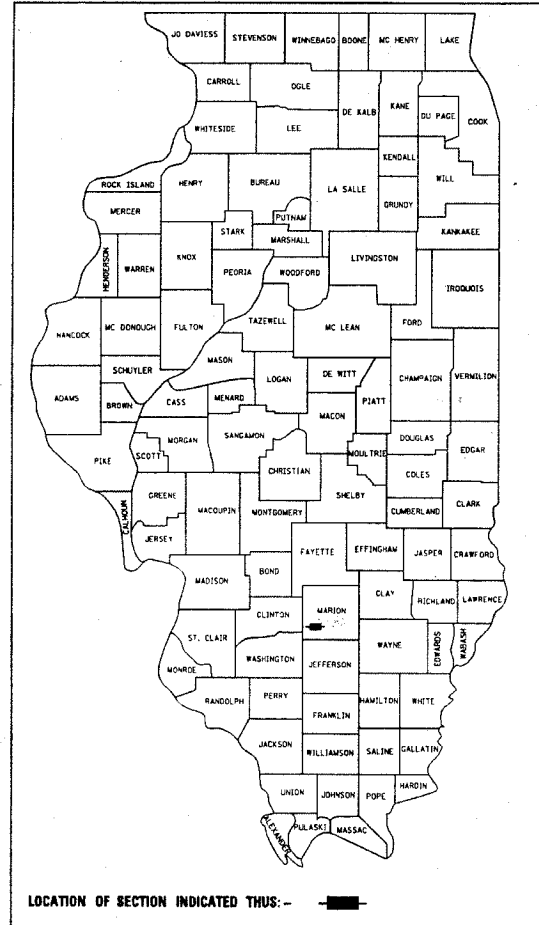
\*FAU 8591, FAS 792, FAS 791  
\*\*05-00090-00-RS, 01-00117-00-RS  
CONTRACT NUMBER 95435

INDEX OF SHEETS

COVER SHEET	1
SUMMARY OF QUANTITIES AND GENERAL NOTES	2
CURVE DATA AND UTILITIES	
TYPICAL SECTIONS DETAILS	3
SCHEDULES	4

STANDARDS

- 000001-04 Standard Symbols, Abbreviations and Patterns
- 442201-01 Class C and D Patches
- 701201-02 Lane Closure, 2L,2W, Day Only, for Speeds≥45 MPH
- 701301-02 Lane Closure, 2L,2W Short Time Operations
- 701306-01 Lane Closure, 2L,2W Slow Moving Operations - Day Only for Speeds: 45MPH
- 701311-02 Lane Closure, 2L,2W Slow Moving Operations - Day Only
- 701501-03 Urban Lane Closure, 2L,2W, Undivided
- 702001-05 Traffic Control Devices
- 780001-01 Typical Pavement Markings



THE ACCEPTANCE OF THIS PROJECT IS BASED ON THE LOCAL AGENCY PAVEMENT PRESERVATION (LAPP) POLICIES ON THE COUNTY HIGHWAY SYSTEM.

*Maureen Kavel*  
DISTRICT ENGINEER OF LOCAL ROADS AND STREETS  
DATE: 5-31-05

STATE OF ILLINOIS  
DEPARTMENT OF TRANSPORTATION  
DIVISION OF HIGHWAYS

SUBMITTED 05-11-2005

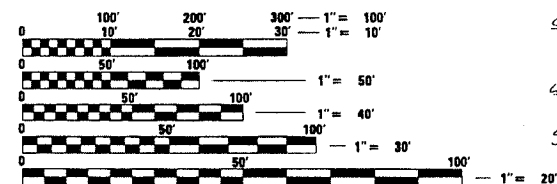
*James E. Cunningham*  
COUNTY ENGINEER

5-31-2005  
*Maureen Kavel*  
DISTRICT ENGINEER OF LOCAL ROADS & STREETS

5-31-2005  
*Christie M. Reed*  
DEPUTY DIRECTOR OF HIGHWAYS  
REGION FOUR ENGINEER

DESIGN CLASSIFICATION: RURAL MAJOR COLLECTOR  
URBAN MINOR ARTERIAL

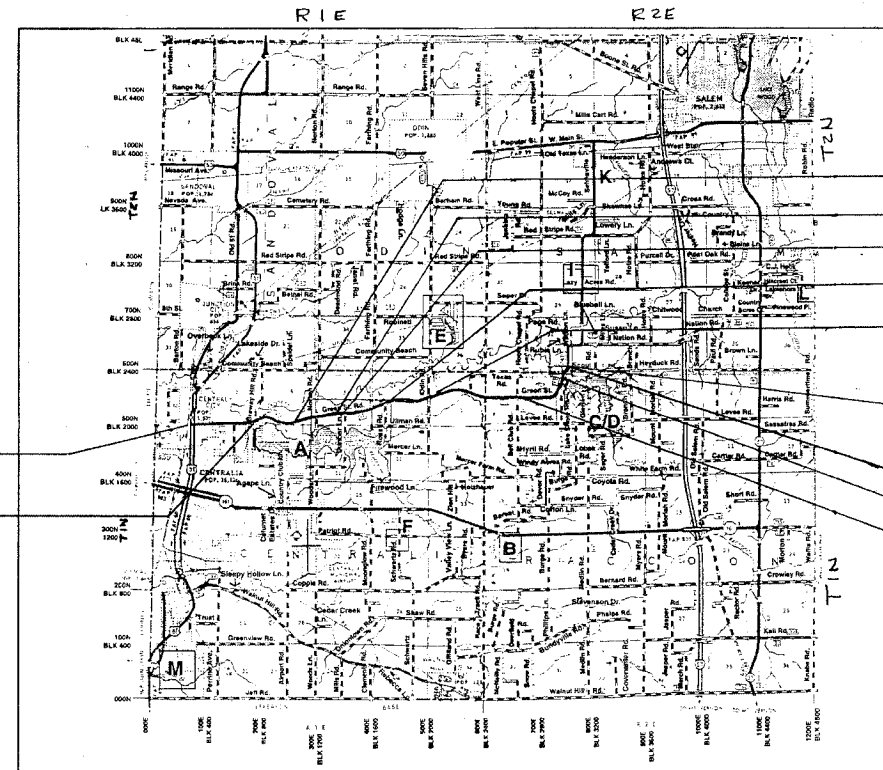
ADT<sub>2004</sub> : 2750  
ADT<sub>2024</sub> : 3850  
DESIGN SPEED - 60 MPH



FULL SIZE PLANS HAVE BEEN PREPARED USING STANDARD ENGINEERING SCALES. REDUCED SIZED PLANS WILL NOT CONFORM TO STANDARD SCALES. IN MAKING MEASUREMENTS ON REDUCED PLANS, THE ABOVE SCALES MAY BE USED.

J.U.L.I.E.  
JOINT UTILITY LOCATION INFORMATION FOR EXCAVATION  
1-800-892-0123

CONTRACT NO. 95435



BEGIN STA 0+20  
EQUATION : 107+06.70 BACK  
107+04.75 AHEAD  
EQUATION : 137+27.53 BACK  
137+45.00 AHEAD  
EQUATION : 150+32.98 BACK  
150+26.00 AHEAD  
EQUATION : 175+45.23 BACK  
175+46.99 AHEAD  
EQUATION : 210+22.85 BACK  
210+78.56 AHEAD

STA 391+78.7 END SECTION  
STR 01-00117-00-RS  
END STA 391+78.7  
EQUATION : 375+405.76 BACK  
375+06.78 AHEAD  
EQUATION : 297+38.98 BACK  
297+46.08 AHEAD

THESE PLANS WERE PREPARED BY ME OR A FULL-TIME MEMBER OF MY STAFF UNDER MY PERSONAL SUPERVISION.

*James E. Cunningham*  
COUNTY ENGINEER, MARION COUNTY  
901 WEST ELM STREET  
SALEM, ILLINOIS 62881  
ILLINOIS LICENSED PROFESSIONAL ENGINEER  
NO. 062-031357  
LICENSE EXPIRES 11/30/05

GROSS LENGTH  
Sta 0+20 to Sta 70+22.4 7002.4 FT. 1.33 MI.  
Sta 70+22.4 to Sta 391+78.7 31078.5 FT. 6.08 MI.

NET LENGTH 38080.7 FT. 7.41 MI.