

FOR UTILITY LOCATION PURPOSES, THIS PROJECT IS LOCATED IN THE N.E. AND S.E. QUARTERS OF SECTION 13, TOWNSHIP 5 NORTH, RANGE 10 WEST OF THE THIRD PRINCIPAL MERIDIAN.

AGENCIES KNOWN TO HAVE UNDERGROUND FACILITIES WITHIN THE LIMITS OF THIS IMPROVEMENT ARE SHOWN BELOW (MEMBERS OF JULIE, PHONE (800) 892-0123, ARE INDICATED BY *).

- * TCI OF ILLINOIS, INC.
508 NIAGARA
EAST ALTON, IL 62024
(618) 251-2660
- * SBC COMMUNICATIONS
203 GOETHE
COLLINSVILLE, IL 62234
(618) 346-6400
- * AMEREN UE
700 OAKWOOD AVENUE
P.O. BOX 478
ALTON, IL 62002
(618) 463-4043 (GAS)
(618) 463-4051 (ELECTRIC)
- CITY OF ALTON
PUBLIC WORKS DEPARTMENT
#2 EMMA L. KAUS LANE
ALTON, IL 62002
(618) 463-3530
- * CENTER POINT ENERGY
(MISSISSIPPI RIVER TRANSMISSION CORP.)
11839 BLUFF ROAD
COLUMBIA, IL 62236
(618) 799-9098
- * ILLINOIS AMERICAN WATER CO.
4436 INDUSTRIAL DRIVE
P.O. BOX 186
ALTON, IL 62002
(618) 466-2131

STATE OF ILLINOIS DEPARTMENT OF TRANSPORTATION DIVISION OF HIGHWAYS FEDERAL AID HIGHWAY

INDIANA AVE. EXTENSION - PHASE II
SECTION 97-00208-01-GS
FAU ROUTE 8966
PROJECT HPD-0387 (002)
CITY OF ALTON
MADISON COUNTY
JOB C-98-047-00

CONTRACT NO. 97255

SECTION	COUNTY	TOTAL SHEETS	SHEET NO.
*	MADISON	34	1

FEDERAL AID PROJECT
* 97-00208-01-GS

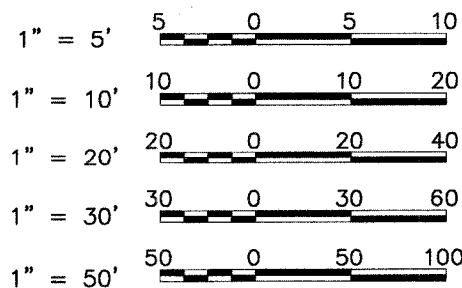
INDEX TO SHEETS

1. COVER SHEET
2. SUMMARY OF QUANTITIES, GENERAL NOTES & LEGEND
3. TYPICAL SECTIONS
4. TYPICAL EMBANKMENT SECTIONS AND DETAILS
5. TRAFFIC CONTROL PLAN, CONTROL POINTS & BENCHMARKS
- 6.-8. PLAN AND PROFILE SHEETS
9. EROSION CONTROL PLAN
10. CULVERT PLANS
- 11.-28. BRIDGE PLANS
- 29.-34. CROSS SECTIONS

HIGHWAY STANDARDS

- 280001-02
- 515001-02
- 601001
- 601101
- 702001-05

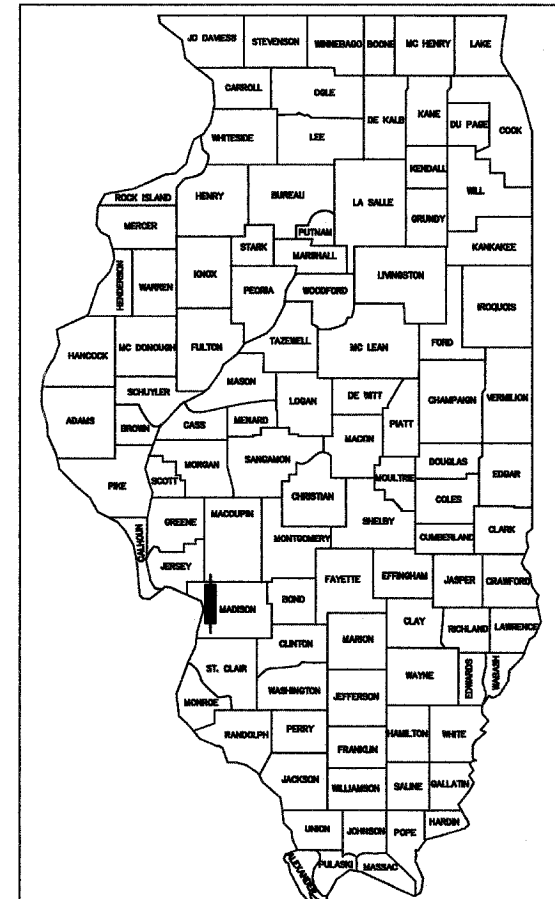
SCALES



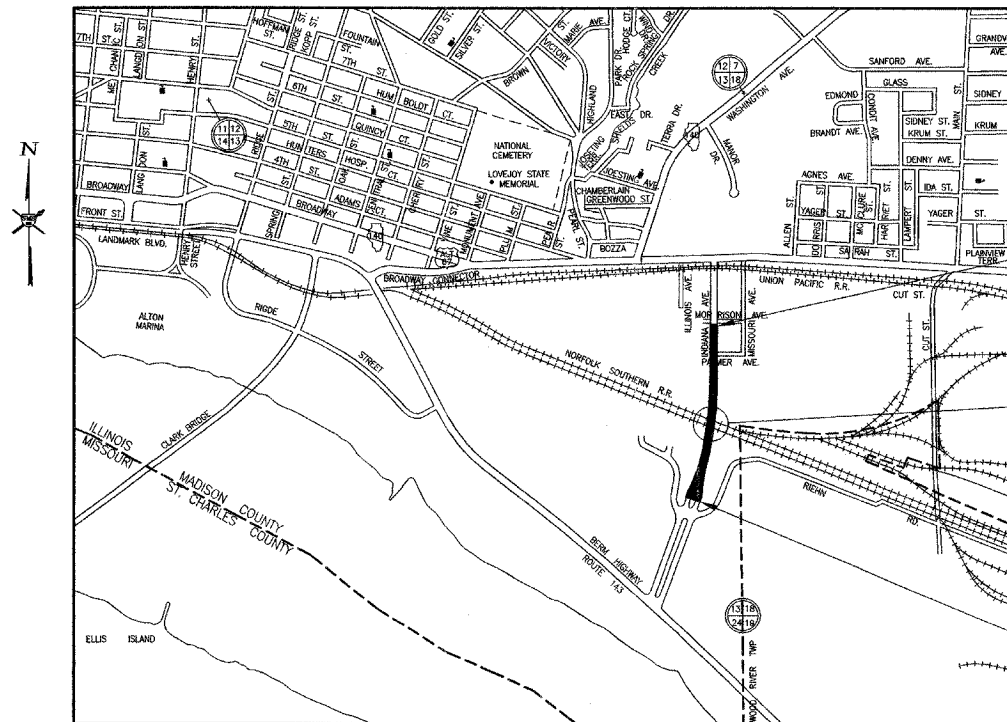
FULL SIZE PLANS HAVE BEEN PREPARED USING STANDARD ENGINEERING SCALES. REDUCED SIZED PLANS WILL NOT CONFORM TO STANDARD SCALES. IN MAKING MEASUREMENTS ON REDUCED PLANS THE ABOVE SCALES MAY BE USED.

DESIGN DESIGNATION - DHV 1,420 (2025) URBAN COLLECTOR 8.856 (PCC-20)
DESIGN SPEED = 40 M.P.H.

CONTRACT NO. 97255



LOCATION OF SECTION INDICATED THUS:—



LOCATION MAP



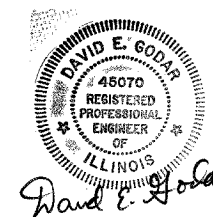
TOTAL NET LENGTH OF PROJECT = 2,000.00 FEET = 0.379 MILES

BEGIN IMPROVEMENT OF
INDIANA AVENUE
STA. 115+00

PROPOSED OVERPASS STRUCTURE
STA. 123+87.66 TO STA. 126+50.73

END IMPROVEMENT OF
INDIANA AVENUE
STA. 135+00

APPROVED	5-17	20 05
	<i>David E. Godar</i> LOCAL AGENCY REPRESENTATIVE	
PASSED	6-2	20 05
	<i>Annmarie Oberino</i> DISTRICT ENGINEER OF LOCAL ROADS & STREETS	
APPROVED	6-2	20 05
	<i>Mary C. Lamie</i> MARY C. LAMIE, P.E. DEPUTY DIRECTOR OF HIGHWAYS REGION FIVE ENGINEER	
STATE OF ILLINOIS DEPARTMENT OF TRANSPORTATION		



DATE SIGNED 5-16-2005
EXPIRATION DATE 11-30-2005



Sheppard Morgan & Schwaab, Inc.
CONSULTING ENGINEERS & LAND SURVEYORS
215 Market Street
Alton, Illinois 62002
P.O. Box E
618/462-9755

10 Central Industrial Dr
Northgate Center
Granite City, IL 62040
618/877-8700