

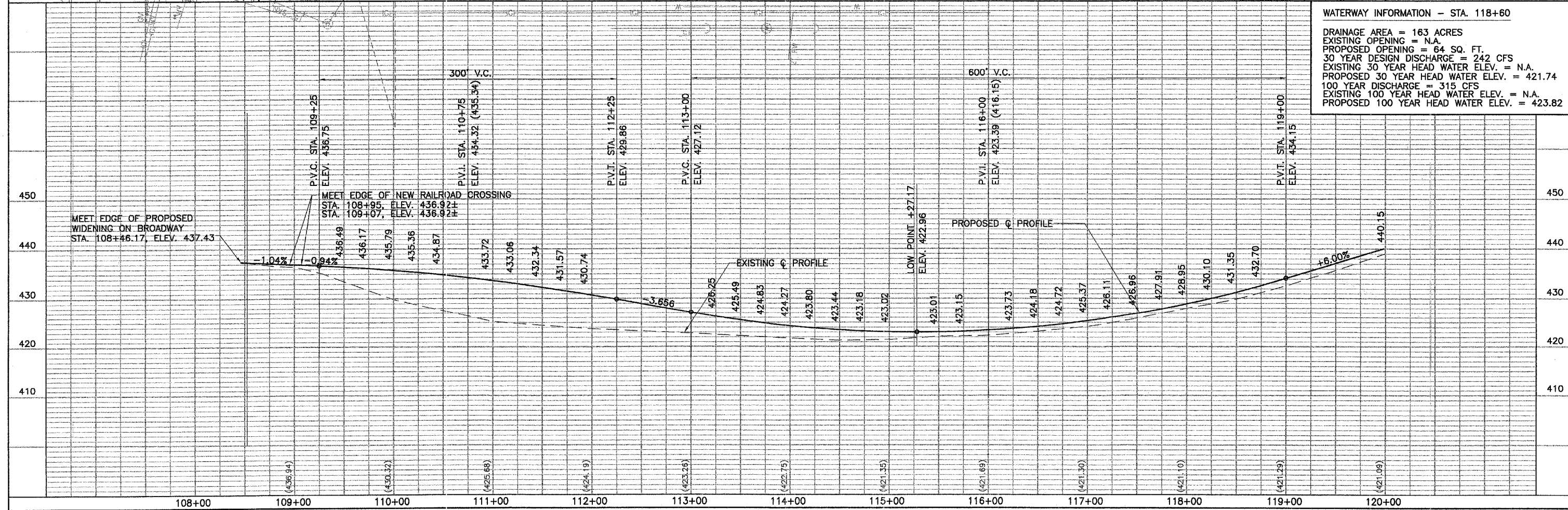
- EXISTING EAST-WEST DRAINAGE DITCH
- 20 FT. PIPE CULVERT REMOVAL (36")
- 2 EA. PLUG EXISTING CULVERTS
- 1 EA. PLUG EXISTING DRAIN
- 90 CU. YD. CONTROLLED LOW-STRENGTH MATERIAL (USED TO FILL CULVERTS)
- 1 L. SUM CLEANING CULVERTS
- PROPOSED 8'x8' BOX CULVERT SEE PLAN SHEET NO. 10
- 2 EA. PLUG EXISTING CULVERTS
- 20 FT. PIPE CULVERT REMOVAL (36")
- EXISTING PIEZOMETER READOUT STATION
- EXISTING EAST-WEST DRAINAGE DITCH
- 1 EA. PLUG EXISTING DRAIN

BEGIN SECTION
97-00208-01-GS
STA. 115+00

BENCHMARKS: SEE SHEET NO. 5

WATERWAY INFORMATION - STA. 118+60

DRAINAGE AREA = 163 ACRES
 EXISTING OPENING = N.A.
 PROPOSED OPENING = 64 SQ. FT.
 30 YEAR DESIGN DISCHARGE = 242 CFS
 EXISTING 30 YEAR HEAD WATER ELEV. = N.A.
 PROPOSED 30 YEAR HEAD WATER ELEV. = 421.74
 100 YEAR DISCHARGE = 315 CFS
 EXISTING 100 YEAR HEAD WATER ELEV. = N.A.
 PROPOSED 100 YEAR HEAD WATER ELEV. = 423.82



REVISIONS

SMS
ENGINEERS

Sheppard Morgan & Schwaab, Inc.
CONSULTING ENGINEERS LAND SURVEYORS

10 Central Industrial Dr
Greene City, IL 62340
618/877-8700

215 Market Street
Alton, Illinois 62002
618/482-9755

CITY OF ALTON, ILLINOIS
SECTION 97 - 00208 - 01 - GS
INDIANA AVENUE EXTENSION - PHASE II
PLAN & PROFILE

PP1-2005.DWG
 DWG. NO. _____
 REF. BK. PG. _____
 JOB NO. 406365.1
 DSN. BY: DEG
 DWN. BY: CAD
 CHK. BY: DEG
 DATE: APRIL, 2005

SCALE: VERT. 1" = 10'
 HORZ. 1" = 50'

SHEET 6 OF 34