

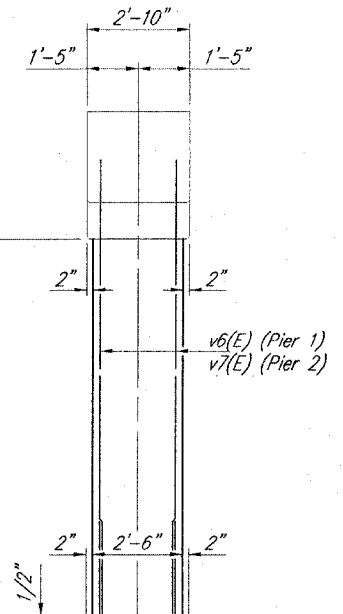
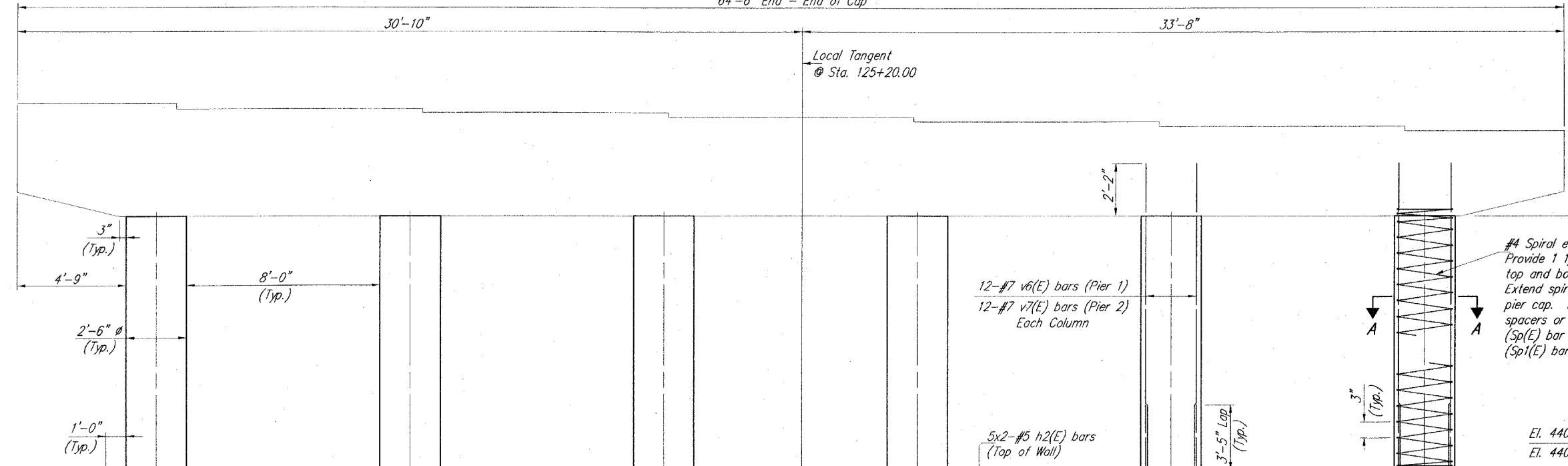
ROUTE NO.	SECTION	COUNTY	TOTAL SHEETS	SHEET NO.
F.A.U. 8966	SEC. 97-00208-01-GS	MADISON	34	2
FED. ROAD DIST. NO. 7		ILLINOIS	PROJECT	

64'-6" End - End of Cap

30'-10"

33'-8"

Local Tangent @ Sta. 125+20.00



8-#4 u1(E) bars at 12" cts. (Typical between columns)

13x2-#5 h2(E) bars at 12" cts. (Each Face) (Pier 1)
13x2-#5 h2(E) bars at 12" cts. (Each Face) (Pier 2)

12-#7 n1(E) bars Each Column

53-#7 v4(E) bars @ 12" cts. (Each Face) (Pier 1)
53-#7 v5(E) bars @ 12" cts. (Each Face) (Pier 2)

5-#7 v4(E) bars (Each End) (Pier 1)
5-#7 v5(E) bars (Each End) (Pier 2) (Radially Placed)

14-#5 h2(E) bars at 12" cts. (Each End) (Pier 1)
14-#5 h2(E) bars at 12" cts. (Each End) (Pier 2)

1'-8" Lap (Typ.)

3'-5"

El. 424.80 (Pier 1)
El. 425.40 (Pier 2)

2'-2" Lap (Typ.)

53-#7 n(E) bars at 12" cts. (Each Face)

5-#7 n(E) bars (Each End) (Radially Placed)

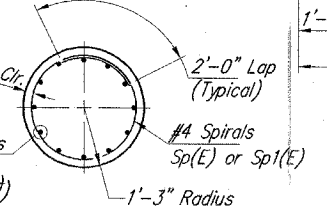
El. 423.80 (Pier 1)
El. 424.40 (Pier 2)

ELEVATION (Looking South)

Local Tangent @ Sta. 125+20.00
Profile Grade Line & Roadway

10" 10-#7 t(E) bars at 8" cts. (Typical between piles) 10"

2-#7 t(E) bars (Each End)



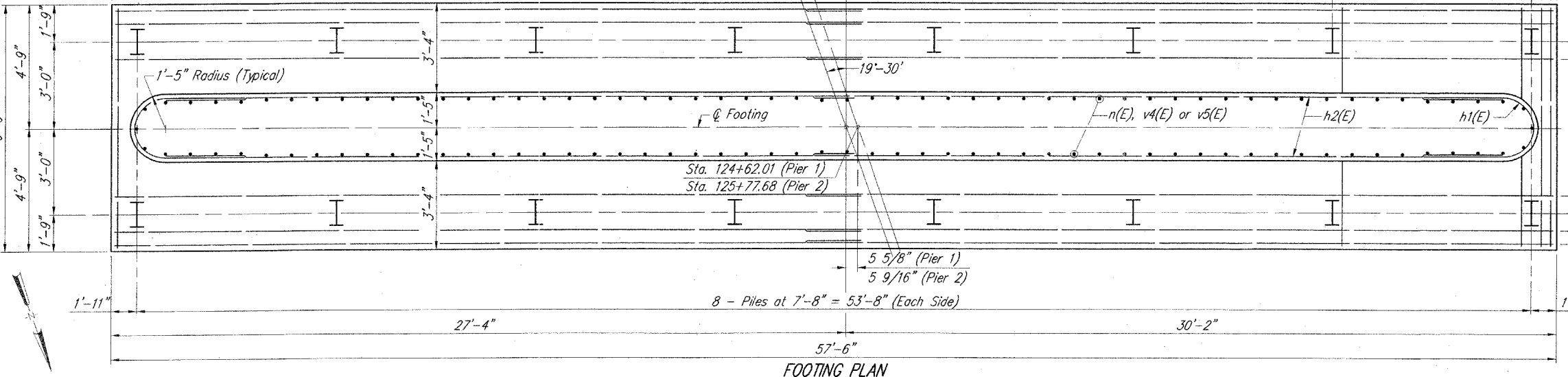
** As specified in article 512.10(g)(3) of the Standard Specifications, except P=1.5 (12000 x sq. in. pile cross section)

Corporate License Number 184-001-084

PIERS 1 & 2 - SHEET 1 OF 2
INDIANA AVENUE over NORFOLK SOUTHERN RAILWAY
SEC. 97-00208-01-GS
STATION 125+20.00
ALTON, ILLINOIS
STR. NO. 060-6110



DATE 05/12/06



LAYOUT 2/20/06
 D.F. 3/10/06
 D.A.N. 3/31/05
 REVISED D.F. 3/31/05
 1:95,825 (9531028) BRIDGE 05-12-05115-PIERS/PI/DRG MAY 11, 2005 7:38AM D.G.