

TABLE OF DIMENSIONS

DESIGN NO.	NOMINAL DIAM. OF PIPE	SLOPE OF FILL	DIMENSIONS SAME FOR ALL MULTIPLES					DIMENSIONS FOR 2 PIPES	
			A	B	C	F	G	D	E
D375-1* (D15-1*)	375 (15)	1:1*	495 (19)	260 (10)	590 (23)	750 (29*)	940 (37)	1.55 m (5'-1")	2.61 m (8'-6")
D375-2 (D15-2)	375 (15)	1:2	660 (26)	260 (10)	590 (23)	1.0 m (3'-3")	940 (37)	1.55 m (5'-1")	2.96 m (9'-8")
D450-1* (D18-1*)	450 (18)	1:1*	495 (19)	330 (13)	660 (26)	750 (29*)	1.02 m (3'-4")	1.71 m (5'-7")	2.77 m (9'-0")
D450-2 (D18-2)	450 (18)	1:2	660 (26)	330 (13)	660 (26)	1.0 m (3'-3")	1.02 m (3'-4")	1.71 m (5'-7")	3.12 m (10'-2")
D600-1* (D24-1*)	600 (24)	1:1*	640 (25)	410 (16)	840 (33)	965 (38)	1.22 m (4'-0")	2.11 m (6'-11")	3.47 m (11'-4")
D600-2 (D24-2)	600 (24)	1:2	860 (34)	410 (16)	840 (33)	1.28 m (4'-2")	1.22 m (4'-0")	2.11 m (6'-11")	3.92 m (12'-10")
D750-1* (D30-1*)	750 (30)	1:1*	760 (30)	485 (19)	990 (39)	1.14 m (3'-9")	1.37 m (4'-6")	2.41 m (7'-11")	4.02 m (13'-2")
D750-2 (D30-2)	750 (30)	1:2	1.01 m (3'-4")	485 (19)	990 (39)	1.5 m (4'-11")	1.37 m (4'-6")	2.41 m (7'-11")	4.53 m (14'-10")
D900-1* (D36-1*)	900 (36)	1:1*	915 (36)	560 (22)	1.17 m (3'-10")	1.36 m (4'-5")	1.57 m (5'-2")	2.75 m (9'-0")	4.67 m (15'-6")
D900-2 (D36-2)	900 (36)	1:2	1.22 m (4'-0")	560 (22)	1.17 m (3'-10")	1.79 m (5'-10")	1.57 m (5'-2")	2.75 m (9'-0")	5.28 m (17'-6")

DIMENSIONS FOR

No. 15 BARS-h to h₉

(No. 4) BARS-h to h₉

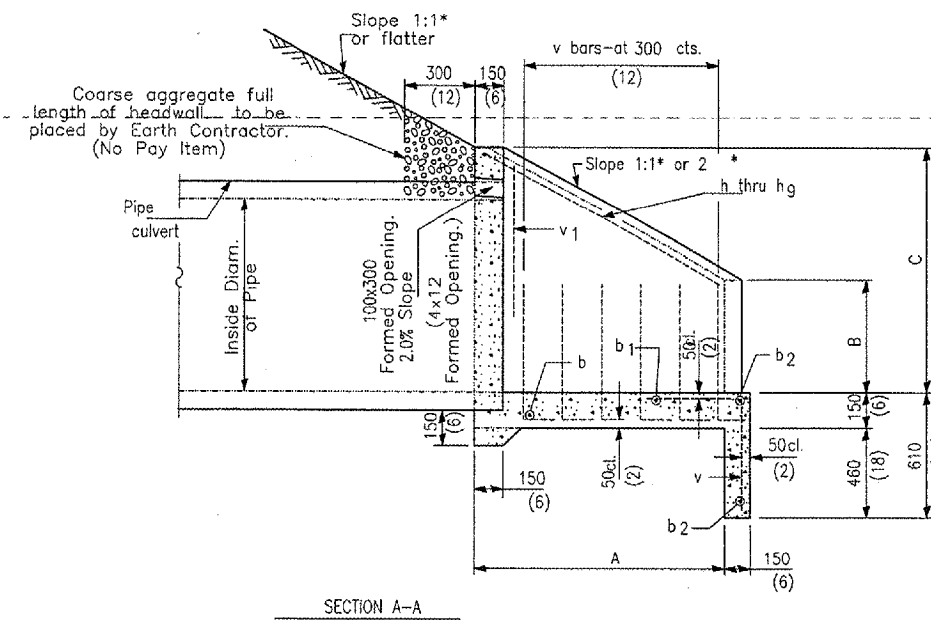
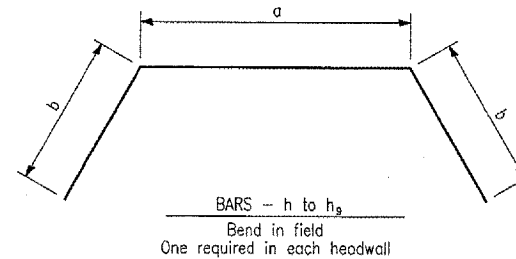
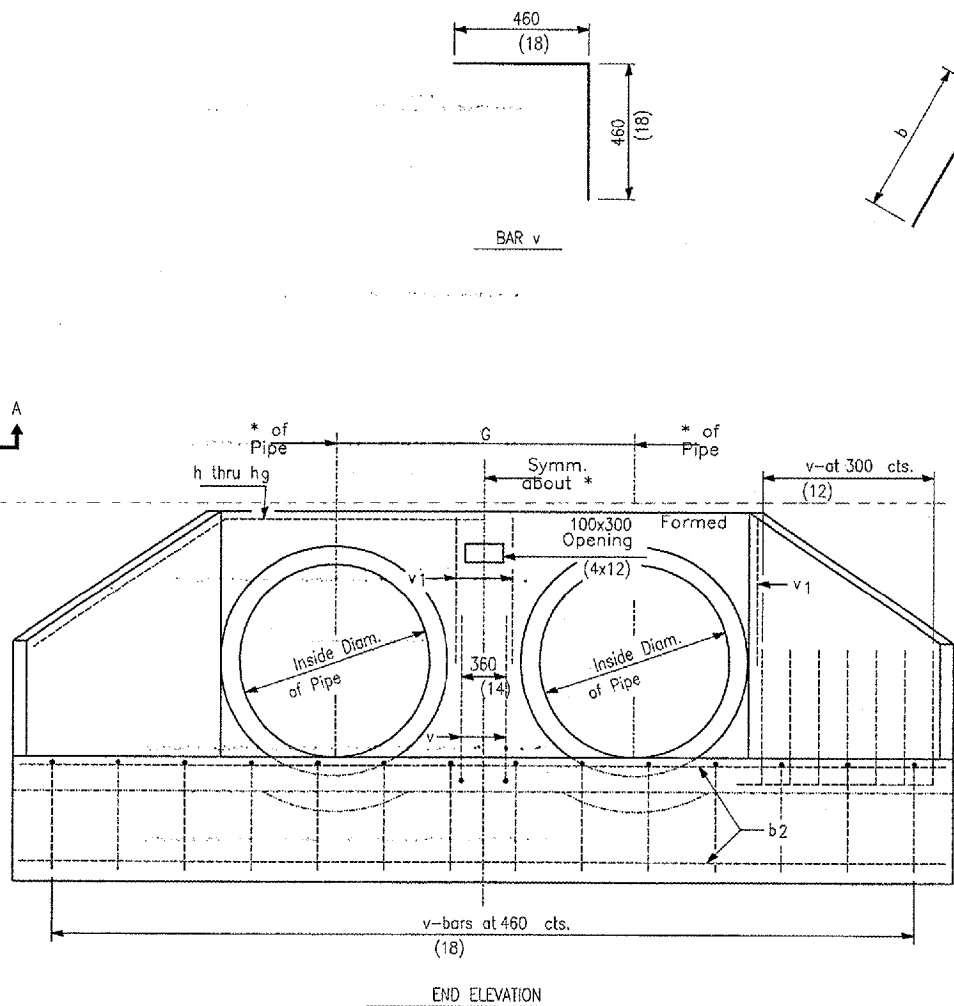
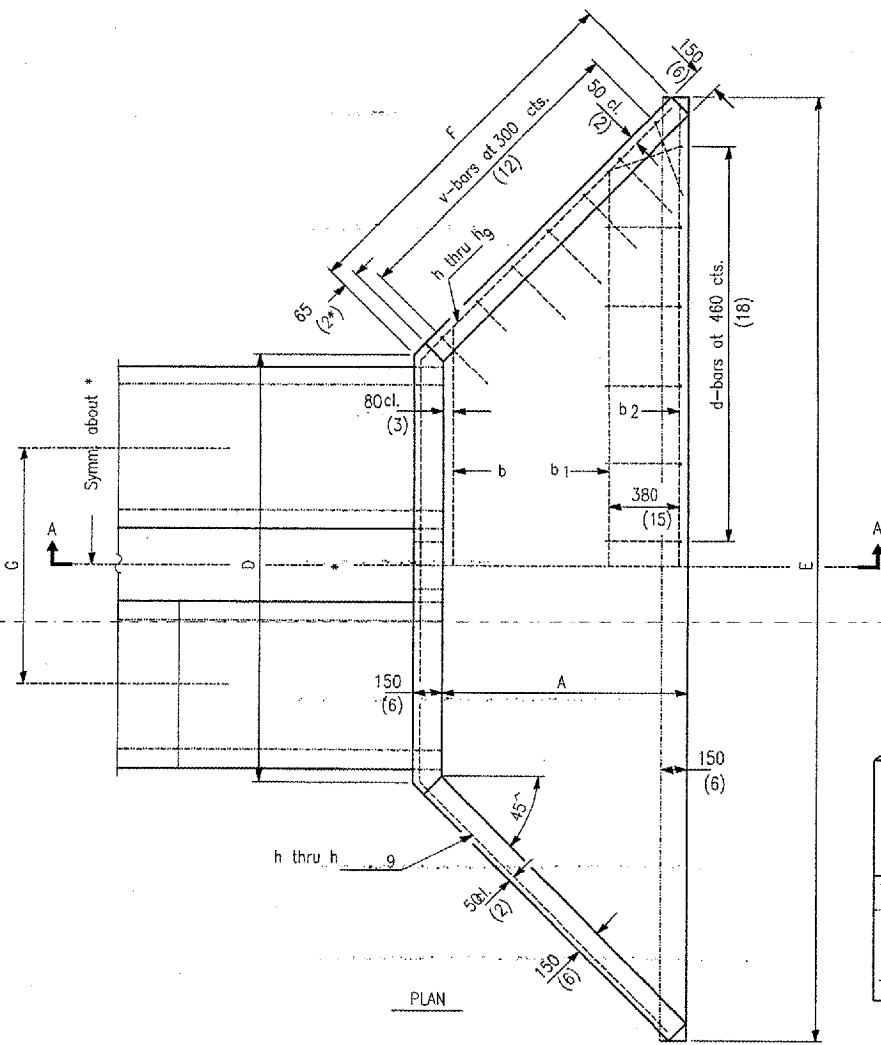
MARK	2 PIPES	
	a	b
h	1.5 m (4'-11")	740 (29)
h ₁	1.5 m (4'-11")	1.0 m (3'-3")
h ₂	1.65 m (5'-5")	740 (29)
h ₃	1.65 m (5'-5")	1.0 m (3'-3")
h ₄	2.06 m (6'-9")	990 (39)
h ₅	2.06 m (6'-9")	1.3 m (4'-3")
h ₆	2.36 m (7'-9")	1.18 m (3'-10")
h ₇	2.36 m (7'-9")	1.49 m (4'-10")
h ₈	2.75 m (9'-0")	1.45 m (4'-9")
h ₉	2.75 m (9'-0")	1.75 m (5'-9")

NOTE:
THE DESIGN FOR THE HEADWALLS ARE:
TWIN 24" PIPES - D24-2
TWIN 36" PIPES - D36-2

TABLE OF QUANTITIES

DE265

DESIGN NO.	Concrete 2 End Secs. cu. m (cu. yds.)	REINFORCEMENT BARS IN ONE END SECTION										TOTAL Qty. 2 End Secs. kg (lbs.)		
		No. 15-h Bars (No. 4)-h Bars		No. 15-b ₂ Bars (No. 4)-b ₂ Bars		No. 15-b ₁ Bars (No. 4)-b ₁ Bars		No. 15-b Bars (No. 4)-b Bars		No. 15-v ₁ Bars (No. 4)-v ₁ Bars			No. 15-v Bars (No. 4)-v Bars	
		MARK	LENGTH	QTY.	LENGTH	QTY.	LENGTH	QTY.	LENGTH	QTY.	LENGTH		QTY.	LENGTH
D375-1* (D15-1*)	1.1 (1.4)	h	2.98 m (9'-9")	2	2.5 m (8'-3")			1	1.9 m (6'-3")				14	70 (100)
D375-2 (D15-2)	1.4 (1.8)	h ₁	3.5 m (11'-6")	2	2.82 m (9'-3")	1	2.21 m (7'-3")	1	1.9 m (6'-3")				17	90 (130)
D450-1* (D18-1*)	1.3 (1.7)	h ₂	3.13 m (10'-3")	2	2.59 m (8'-6")			1	2.06 m (6'-9")				14	70 (100)
D450-2 (D18-2)	1.5 (2.0)	h ₃	3.65 m (12'-0")	2	2.97 m (9'-9")	1	2.36 m (7'-9")	1	2.06 m (6'-9")				17	90 (130)
D600-1* (D24-1*)	1.8 (2.4)	h ₄	4.04 m (13'-3")	2	3.35 m (11'-0")	1	2.74 m (9'-0")	1	2.44 m (8'-0")	4	790 (31)		18	110 (160)
D600-2 (D24-2)	2.3 (3.0)	h ₅	4.66 m (15'-3")	2	3.81 m (12'-6")	1	3.2 m (10'-6")	1	2.44 m (8'-0")	4	790 (31)		21	130 (180)
D750-1* (D30-1*)	2.3 (3.0)	h ₆	4.72 m (15'-6")	2	3.89 m (12'-9")	1	3.12 m (10'-3")	1	2.51 m (8'-3")	4	790 (31)		19	120 (170)
D750-2 (D30-2)	2.9 (3.8)	h ₇	5.34 m (17'-6")	2	4.42 m (14'-6")	1	3.73 m (12'-3")	1	2.51 m (8'-3")	4	790 (31)		22	140 (190)
D900-1* (D36-1*)	3.0 (3.9)	h ₈	5.65 m (18'-6")	2	4.57 m (15'-0")	1	3.81 m (12'-6")	1	2.97 m (9'-9")	4	1.07 m (3'-6")		22	150 (200)
D900-2 (D36-2)	3.8 (5.0)	h ₉	6.25 m (20'-6")	2	5.18 m (17'-0")	1	4.42 m (14'-6")	1	2.97 m (9'-9")	4	1.07 m (3'-6")		26	170 (230)



JUN 10, 2005 2:15 PM CCC E:\AIRPORTS\DECATUR\B02-04TXD\AIRPORT_SHEETS\CONTRACT-2\R-531DRN.DWG - Details 2

BY	REVISION	DATE

HAHANSON
DECATUR, ILLINOIS
A.I.P. PROJ.: 3-17-0033-28
ILL. PROJ.: DEC-3414

FILE	PROJECT	DATE
802-04TXD	R-531DRN.DWG	03/18/05

HAHANSON
Engineers, Architects, Scientists
1525 South Sixth Street
Springfield, Illinois 62703-2886
Offices Nationwide

TAXIWAY G WIDENING
PHASE II
DRAINAGE DETAILS