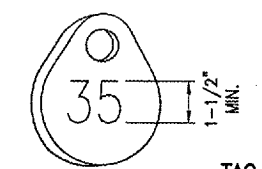
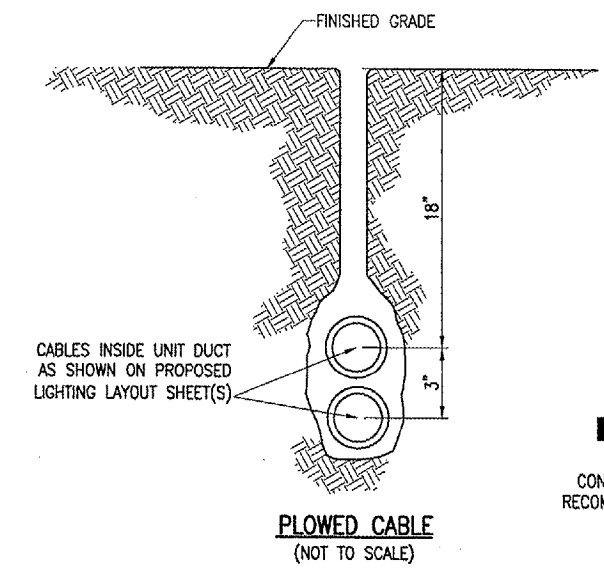
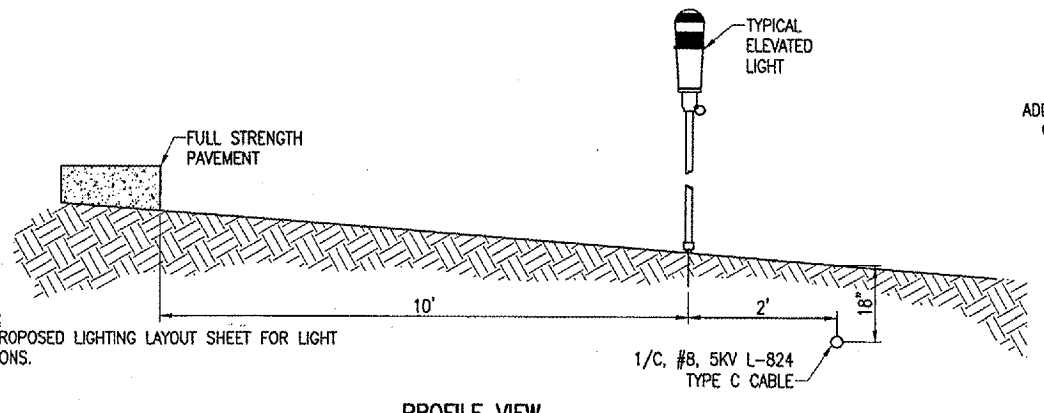
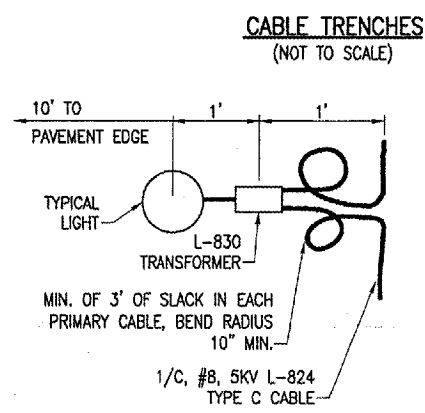
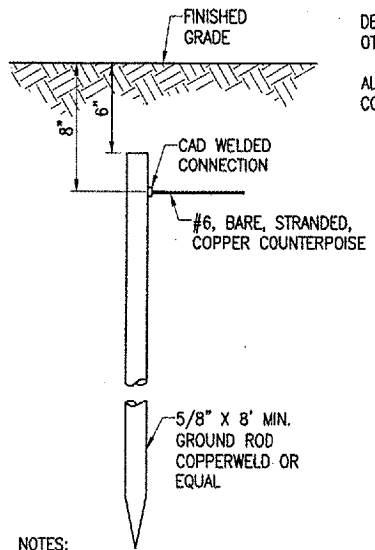
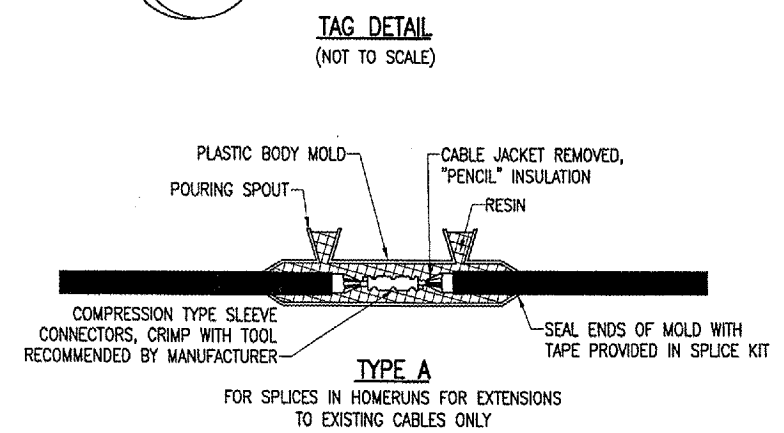


**NOTES:**  
 DETAIL NUMBERS INDICATE NO. OF CABLES.  
 TRENCHES WITH MORE THAN SEVEN CABLES SHALL BE INCREASED 3" IN WIDTH FOR EACH ADDITIONAL CABLE; IF SPECIFIED ON PLANS TWO PARALLEL TRENCHES MAY BE CONSTRUCTED.  
 DEPTH OF TRENCHES SHALL BE AS SHOWN ABOVE UNLESS OTHERWISE SPECIFIED ON THE PLANS.  
 ALL DISTURBED SURFACES SHALL BE RESTORED TO THEIR ORIGINAL CONDITION. COST IS INCIDENTAL TO TRENCH.



**NOTE:**  
 AFFIX NON-CORROSIVE TAG TO FIXTURE FACING RUNWAY WITH SET SCREW, WIRE TIE, OR METAL BAND. NUMERALS SHALL BE ENGRAVED FOR PERMANENT READABILITY.



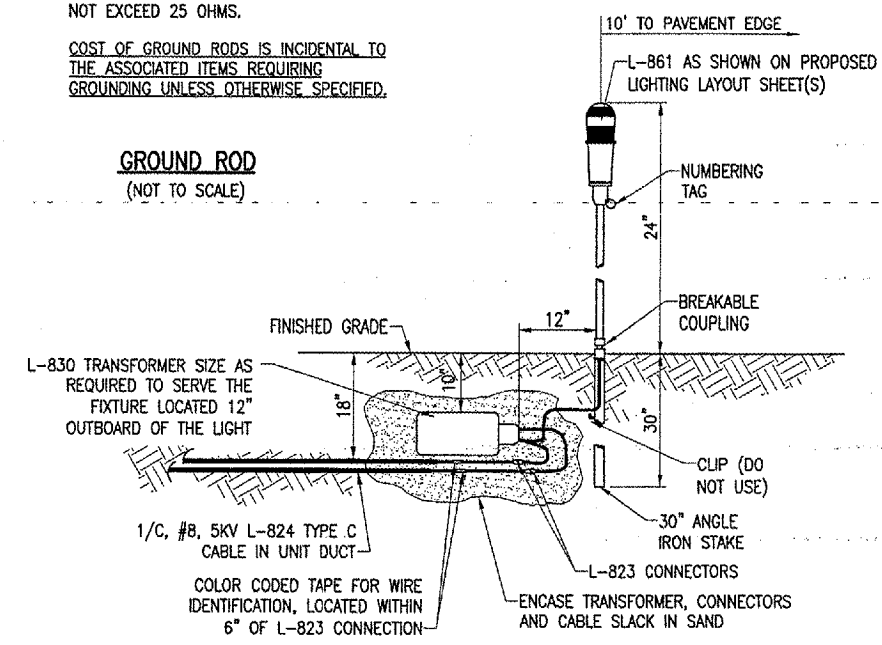
**NOTES:**  
 TYPE AND MINIMUM NUMBER OF GROUND RODS SHALL BE AS SPECIFIED ON THE PLAN.  
 THE RESISTANCE TO GROUND OF THE COUNTERPOISE GROUNDING SYSTEM SHALL NOT EXCEED 25 OHMS.  
 COST OF GROUND RODS IS INCIDENTAL TO THE ASSOCIATED ITEMS REQUIRING GROUNDING UNLESS OTHERWISE SPECIFIED.

**GROUND ROD**  
(NOT TO SCALE)

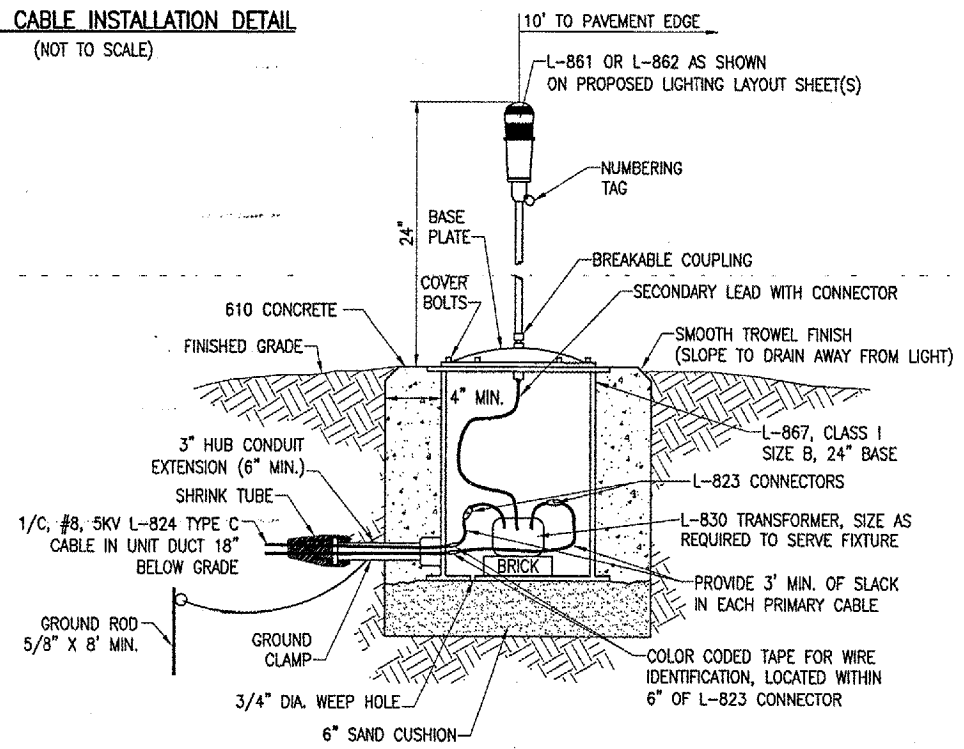
**PLAN VIEW**

**LIGHT AND CABLE INSTALLATION DETAIL**  
(NOT TO SCALE)

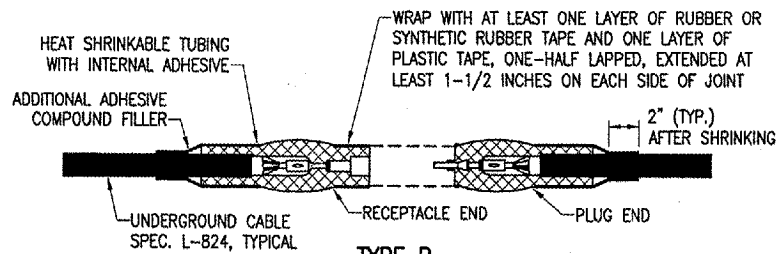
**PROFILE VIEW**



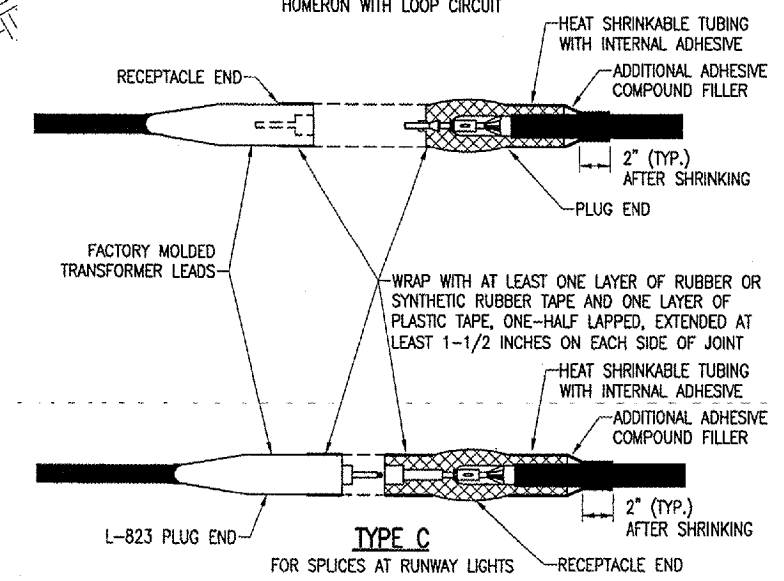
**MEDIUM INTENSITY LIGHT - STAKE MOUNTED**  
(NOT TO SCALE)



**MEDIUM/HIGH INTENSITY LIGHT - BASE MOUNTED**  
(NOT TO SCALE)



**TYPE B**  
FOR SPLICES AT JUNCTION OF HOMERUN WITH LOOP CIRCUIT



**TYPE C**  
FOR SPLICES AT RUNWAY LIGHTS

**NOTES:**  
 SEE PROPOSED LIGHTING LAYOUT SHEET(S) FOR SPLICE TYPE.  
 INSIDE DIAMETER OF CONNECTOR SHALL PROPERLY MATCH THE OUTSIDE DIAMETER OF CABLE.

**CABLE SPLICES**  
(NOT TO SCALE)

THE LOCATION OF UNDERGROUND UTILITIES AS INDICATED ON THE PLANS HAS BEEN OBTAINED FROM EXISTING RECORDS. NEITHER THE OWNER NOR THE ENGINEER ASSUMES ANY RESPONSIBILITY WHATSOEVER, IN RESPECT TO THE ACCURACY OR SUFFICIENCY OF THE INFORMATION AND THERE IS NO GUARANTEE, EITHER EXPRESSED OR IMPLIED, THAT THE CONDITIONS ARE REPRESENTATIVE OF THOSE TO BE ENCOUNTERED IN THE CONSTRUCTION.

BY	
REVISION	
DATE	

DECATUR, ILLINOIS  
 ILL. PROJ.: DEC-3414  
 A.I.P. PROJ.: 3-17-0033-28

REVISED	WJM	06/07/05
DRAWN	CCC	03/18/05
LAYOUT	CCC	03/18/05
DATE	03/08/05	
SCALE	N/A	
FIG. PROJECT NO.	802-041XV0	
FIGURE	R-541ELE.DWG	

**HANSON**  
 Engineers, Architects, Scientists  
 1525 South Sixth Street  
 Springfield, Illinois 62703-2885  
 Offices Nationwide

TAXIWAY G WIDENING  
 PHASE II  
 ELECTRICAL DETAILS

JUN 10, 2005 2:36 PM CCC  
 I:\AIRPORTS\DECATUR\802-041XV0\AIRPORT\ SHEETS\CONTRACT-2\A-R-541ELE.DWG - ELEC. DETAILS 2