

DATE	REVISION


DECATUR, ILLINOIS
 I.L. PROJ.: DEC-3414 A.I.P. PROJ.: 3-17-0033-28

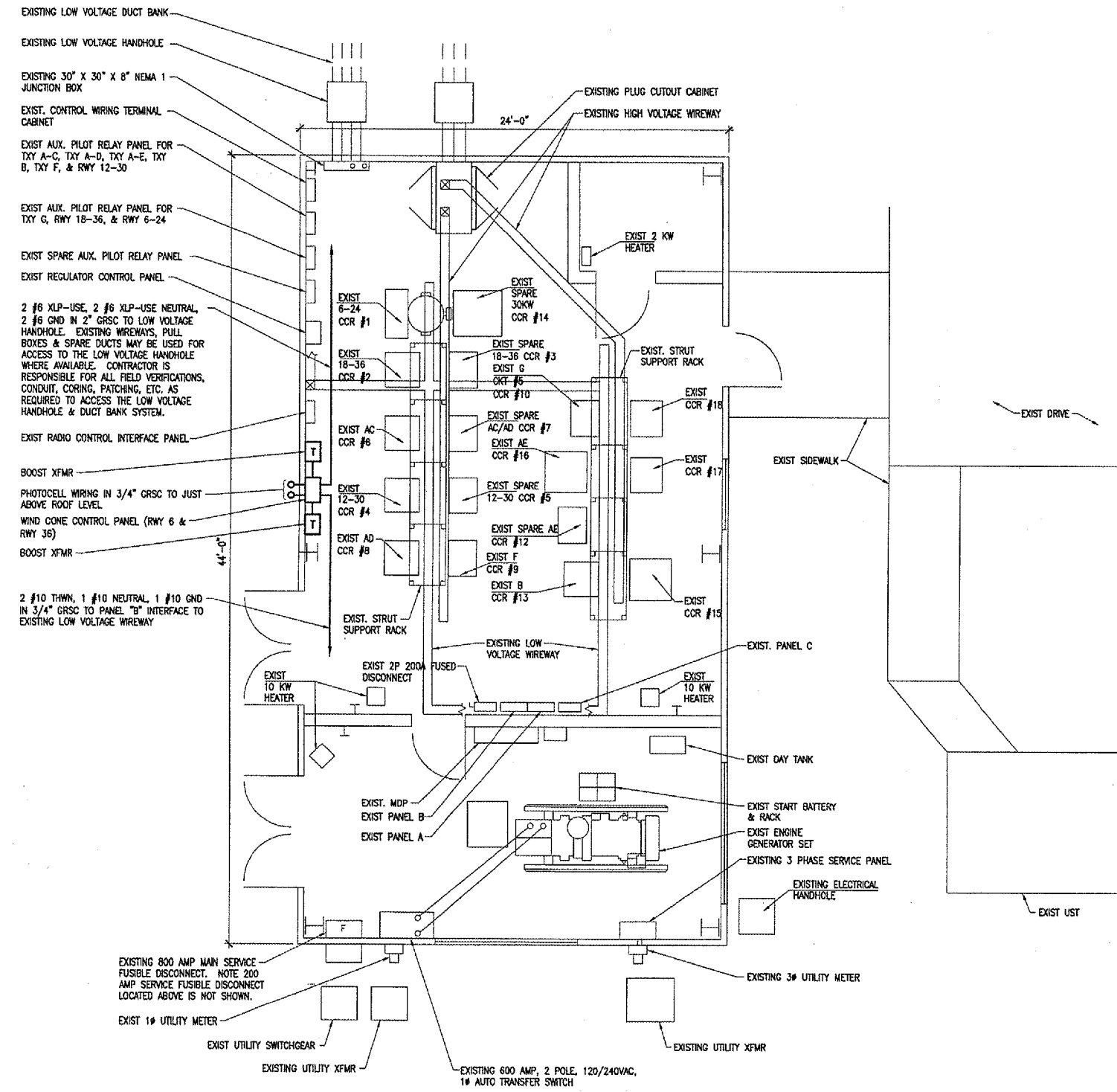
H.E. Project No. 802-041XVD Drawing E-104.DWG Scale 1/4" = 1'-0" Date xx/xx/xx	LAYOUT KRL 04/22/05 DRAWN MV 04/25/05 REVIEWED CAH 06/02/06
---	---


HANSON
 Engineers, Architects, Scientists
 1825 South Sixth Street
 Springfield, Illinois 62703-2886
 Offices Nationwide

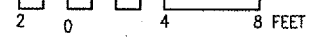
**TAXIWAY G WIDENING
 PHASE II**
**ELECTRICAL VAULT PLAN
 RUNWAY 6 & RUNWAY 36
 WIND CONE WORK**

NOTES

1. ALL VAULT WORK AND/OR POWER OUTAGES SHALL BE COORDINATED WITH THE AIRPORT DIRECTOR AND THE RESIDENT ENGINEER.
2. SEE "ELECTRICAL ONE LINE DIAGRAM FOR RUNWAY 6 & RUNWAY 36 WIND CONES" SHEET FOR INFO ON WIRING REQUIREMENTS.
3. HIGH VOLTAGE AND LOW VOLTAGE CIRCUITS SHALL NOT BE INSTALLED IN THE SAME RACEWAY.
4. ELECTRICAL POWER & WIND CONE CONTROL WORK FOR RUNWAY 6 & RUNWAY 36 WIND CONES SHALL BE PAID FOR UNDER AR800581 ELECTRIC POWER FOR RUNWAY 6 & RUNWAY 36 WIND CONES PER LUMP SUM. ALL POWER & CONTROL CABLE AT THE VAULT AND INTO THE LOW VOLTAGE HANDHOLE ADJACENT TO THE VAULT SHALL BE PAID FOR UNDER AR800581.
5. ALL EQUIPMENT NOT LABELED AS EXISTING IS NEW.



**ELECTRICAL VAULT PLAN FOR
 RWY 6 & RWY 36 WIND CONES**

SCALE 1/4" = 1'-0"


JUN 10, 2005 3:48 PM CCC
 I:\AIRPORTS\DECATUR\802-041XVD\AIRPORT\SHEETS\CONTRACT-2\E-104.DWG - Work-FLR