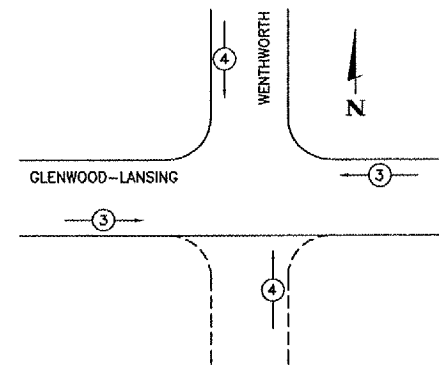
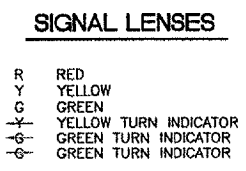
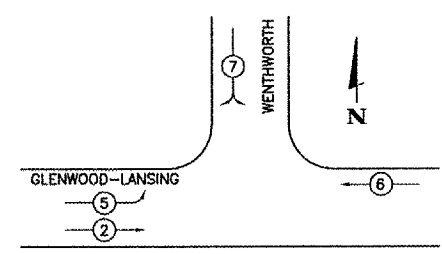


TEMPORARY CABLE PLAN
 NOT TO SCALE



**EMERGENCY VEHICLE
 PREEMPTION SEQUENCE**



**TEMPORARY PHASE
 DESIGNATION DIAGRAM - 1A**

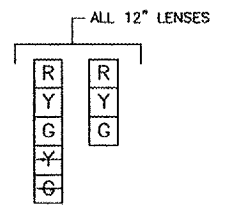
**TEMPORARY TRAFFIC
 SIGNAL LEGEND**

- TEMPORARY SPAN WIRE TETHER WIRE AND CABLE
- ☒ EXISTING CONTROL CABINET
- ← TEMPORARY TRAFFIC SIGNAL HEAD SPAN WIRE MOUNTED
- ⊗ TEMPORARY WOOD POLE (CLASS 5 OR BETTER) 45 POST MINIMUM
- ☒ EXISTING DOUBLE HANDHOLE
- ⊕ EMERGENCY VEHICLE LIGHT DETECTOR
- ☒ CONFIRMATION BEACON
- ☒ TEMPORARY CONTROLLER CABINET
- ⊕ MICROWAVE VEHICLE SENSOR/VIDEO DETECTION SYSTEM

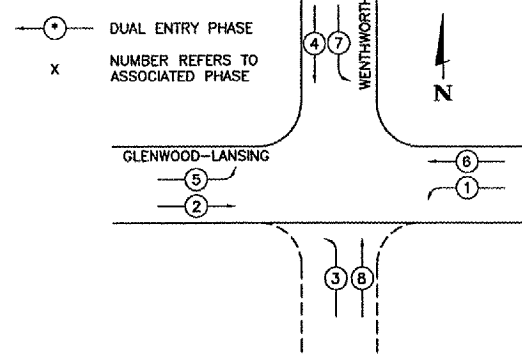
**EXISTING EQUIPMENT TO
 BE REMOVED LEGEND**

- ← EXISTING SIGNAL HEAD TO BE REMOVED
- EXISTING SIGNAL POST AND FOUNDATION TO BE REMOVED
- ☒ EXISTING HANDHOLE TO BE REMOVED
- ⊕ EXISTING VEHICLE LIGHT DETECTOR TO BE REMOVED
- ☒ EXISTING CONFIRMATION BEACON TO BE REMOVED
- EXISTING STEEL MAST ARM POLE AND FOUNDATION TO BE REMOVED

SIGNAL FACES

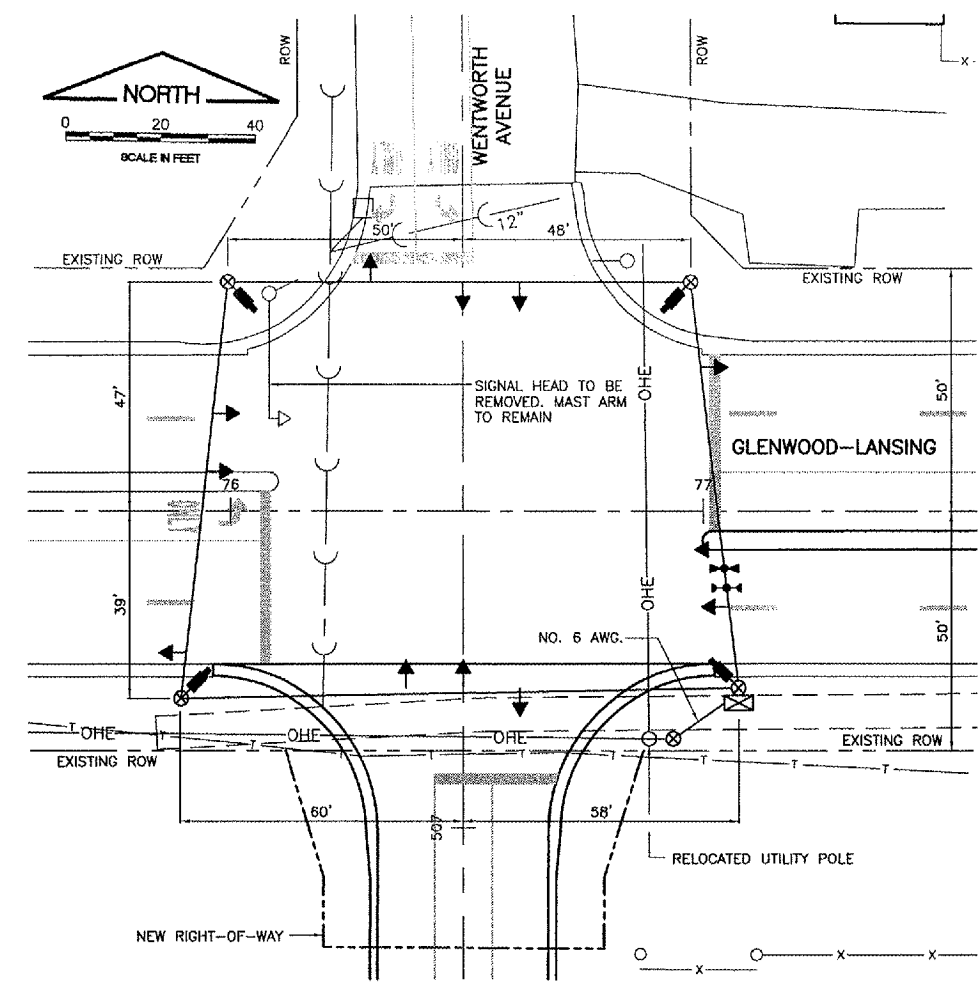


LEGEND



**TEMPORARY PHASE
 DESIGNATION DIAGRAM - 1B**
 REFERRING TO STANDARD 857001

PHASE 1B SHALL BE INCORPORATED INTO SEQUENCE, IF LEFT TURN LANE BECOMES USABLE PRIOR TO COMPLETION OF PROPOSED ELECTRICAL IMPROVEMENTS. (COST INCIDENTAL TO TEMPORARY TRAFFIC CONTROL)



TEMPORARY SIGNAL PLAN
 SCALE: 1"=20'

NOTES FOR TEMPORARY TRAFFIC SIGNALS

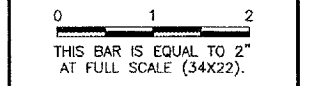
1. ALL CONTROL EQUIPMENT INCLUDING EMERGENCY PRE-EMPTION AND COMMUNICATION DEVICES FOR THE TEMPORARY TRAFFIC SIGNAL(S) SHALL BE FURNISHED BY THE CONTRACTOR UNLESS OTHERWISE STATED IN THE PLANS. ON PROJECTS WITH MULTIPLE TEMPORARY TRAFFIC SIGNAL INSTRUCTIONS, ALL CONTROLLERS SHALL BE THE SAME MANUFACTURER BRAND AND MODEL NUMBER WITH CURRENT SOFTWARE INSTALLED.
2. ALL CONTROLLERS USED FOR TEMPORARY TRAFFIC SIGNALS SHALL BE FULLY ACTUATED NEMA MICROPROCESSOR BASED INSTALLED IN CABINETS WITH 8 PHASE BACK PANELS. CAPABLE OF SUPPLYING 255 SECONDS OF CYCLE LENGTH AND INDIVIDUAL PHASE LENGTH SETTINGS UP TO 99 SECONDS. ON PROJECTS WITH ONE LANE OPEN AND TWO WAY TRAFFIC FLOW, SUCH AS BRIDGE DECK REPAIRS, TEMPORARY SIGNAL CONTROLLER SHALL BE CAPABLE OF PROVIDING ADJUSTABLE ALL RED CLEARANCE SETTINGS OF UP TO 30 SECONDS IN LENGTH.
3. ALL CONTROLLERS USED FOR TEMPORARY TRAFFIC SIGNALS SHALL MEET OR EXCEED THE REQUIREMENTS OF SECTION 857 OF THE STANDARD SPECIFICATIONS FOR ROAD AND BRIDGE CONSTRUCTION WITH REGARDS TO INTERNAL TIME BASE COORDINATION AND PREEMPTION.
4. ALL TRAFFIC SIGNAL SECTIONS AND PEDESTRIAN SIGNAL SECTIONS SHALL BE OF THE 12" TYPE. THE TEMPORARY TRAFFIC SIGNAL HEADS SHALL BE PLACED AS INDICATED ON THE TEMPORARY TRAFFIC SIGNAL PLAN OR AS DIRECTED BY THE ENGINEER. THE CONTRACTOR SHALL FURNISH ENOUGH CABLE SLACK TO RELOCATE HEADS TO ANY POSITION ON THE SPAN WIRE OR AT LOCATIONS ILLUSTRATED ON THE PLANS FOR CONSTRUCTION STAGING. THE TEMPORARY TRAFFIC SIGNAL SHALL REMAIN IN OPERATION DURING ALL SIGNAL HEAD RELOCATIONS. EACH TEMPORARY TRAFFIC SIGNAL HEAD HAVE ITS OWN CABLE FROM THE CONTROLLER CABINET TO THE SIGNAL HEAD.
5. ALL EXISTING STREET NAME AND INTERSECTION REGULATORY SIGNS SHALL BE REMOVED FROM EXISTING POLES AND RELOCATED AND SECURELY FASTENED TO THE SIGNAL SPAN WIRE.
6. ANY TEMPORARY TRAFFIC SECTIONS NOT IN USE DURING A STAGE OF CONSTRUCTION SHALL BE BAGGED AND REACTIVATED.
7. ALL LABOR AND MATERIAL REQUIRED TO COMPLY WITH THESE REQUIREMENTS SHALL BE CONSIDERED INCIDENTAL TO THE BID PRICE OF TEMPORARY TRAFFIC SIGNAL INSTALLATION.
8. TEMPORARY VIDEO DETECTION SYSTEM SHALL BE CONSIDERED AS PART OF THE PAY ITEM "TEMPORARY TRAFFIC SIGNAL INSTALLATION". ALL VIDEO DETECTION ZONES ARE TO BE REDEFINED DURING EACH STAGE OF CONSTRUCTION AND ARE INCIDENTAL TO THE COST OF THE TEMPORARY TRAFFIC SIGNAL INSTALLATION.
9. CONTRACTOR TO VERIFY LOCATION AND DIRECTION OF MAST ARMS AND CAMERAS.
10. CONTRACTOR SHALL ENERGIZE AND UNBAG LIGHTS. IF LEFT TURN LANE BECOMES OPERATIONAL BEFORE ALL PROPOSED ELECTRICAL IMPROVEMENTS ARE COMPLETED. CONTRACTOR SHALL COORDINATE WITH ENGINEER AND COOK COUNTY ENGINEER.

ESTIMATED BILL OF MATERIALS - TEMPORARY

TOTAL	UNIT	DESCRIPTION
1	EACH	8-PHASE CONTROLLER/CABINET WITH ALLIED EQUIPMENT
4	EACH	SIGNAL HEAD, ALUMMINUM, 1-FACE, 3-SECTION
8	EACH	SIGNAL HEAD, ALUMMINUM, 1-FACE, 5-SECTION
850	LIN.FT.	ELECTRIC CABLE OVERHEAD NO 14 - 7/C
450	LIN.FT.	ELECTRIC CABLE OVERHEAD NO 14 - 5/C
830	LIN.FT.	ELECTRIC CABLE OVERHEAD NO 14 - 3/C
190	LIN.FT.	ELECTRIC CABLE OVERHEAD NO 20 - 3/C
50	LIN.FT.	ELECTRIC CABLE 6 AWG - 2/C
800	LIN.FT.	COAXIAL CABLE
450	LIN.FT.	MESSENGER WIRE
450	LIN.FT.	TETHER WIRE
4	EACH	WOOD POLE
1	EACH	SERVICE INSTALLATION POLE MOUNTED
4	EACH	VEHICLE VIDEO DETECTOR
2	EACH	EMERGENCY VEHICLE LIGHT DETECTOR
2	EACH	CONFIRMATION BEACON

REVISIONS

NUMBER	BY	DATE



**LANSING MUNICIPAL AIRPORT
 LANSING, ILLINOIS**
**NORTH QUADRANT SITEMORK - PHASE 1
 AND TAXIWAY G2 EXTENSION**
**INTERSECTION IMPROVEMENTS
 TEMPORARY SIGNAL INSTALLATION**

© Copyright CMT, Inc.

CMT
 CRAWFORD, MURPHY & TILLY, INC.
 CONSULTING ENGINEERS
 License No. 184-006618

Lansing Municipal Airport

DESIGN BY:	DKP
DRAWN BY:	JRO
CHECKED BY:	ARM
APPROVED BY:	
DATE:	03/04/05
JOB No:	03297-02
IL PROJECT: IGQ-3329 A.I.P. PROJECT: 3-17-0121-B21	
SHEET 48 OF 50 SHEETS	