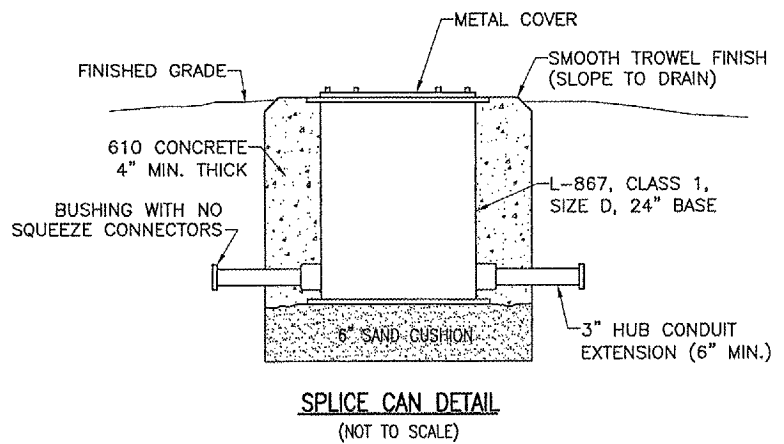


SUMMARY OF ELECTRICAL QUANTITIES			
ITEM NO.	DESCRIPTION	UNIT	QUANTITY
AR108158	1/C #8 5 KV UG CABLE IN UD	L.F.	234
AR108656	3/C #6 600V UG CABLE IN UD	L.F.	345
AR110941	ADJUST 2-WAY CONCRETE ENCASED DUCT	L.F.	20
AR125410	MIL-STAKE MOUNTED	EACH	1
AR125565	SPLICE CAN	EACH	2
AR125961	RELOCATE STAKE MOUNTED LIGHT	EACH	2



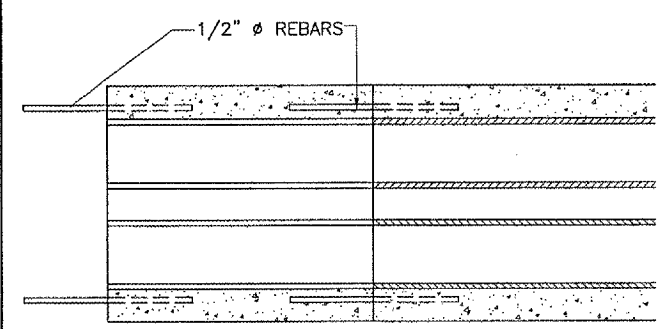
**SPLICE CAN NOTES**

THE TWO PROPOSED SPLICE CANS WILL BE LOCATED AS SHOWN ON THIS SHEET.

THE TWO PROPOSED SPLICE CANS WILL BE CONSTRUCTED IN ACCORDANCE WITH THE DETAIL SHOWN ON THIS SHEET.

THE TWO PROPOSED SPLICE CANS WILL BE PAID FOR UNDER:

AR125565 "SPLICE CAN" \_ \_ \_ 2 EACH.



**PROPOSED DUCT EXTENSION DETAIL**  
NOT TO SCALE

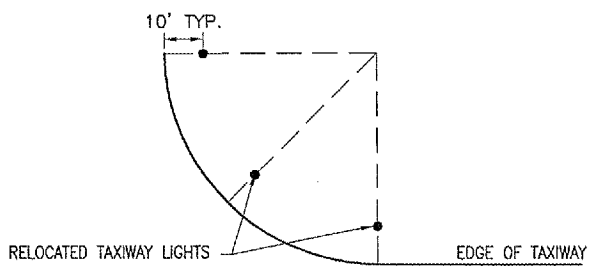
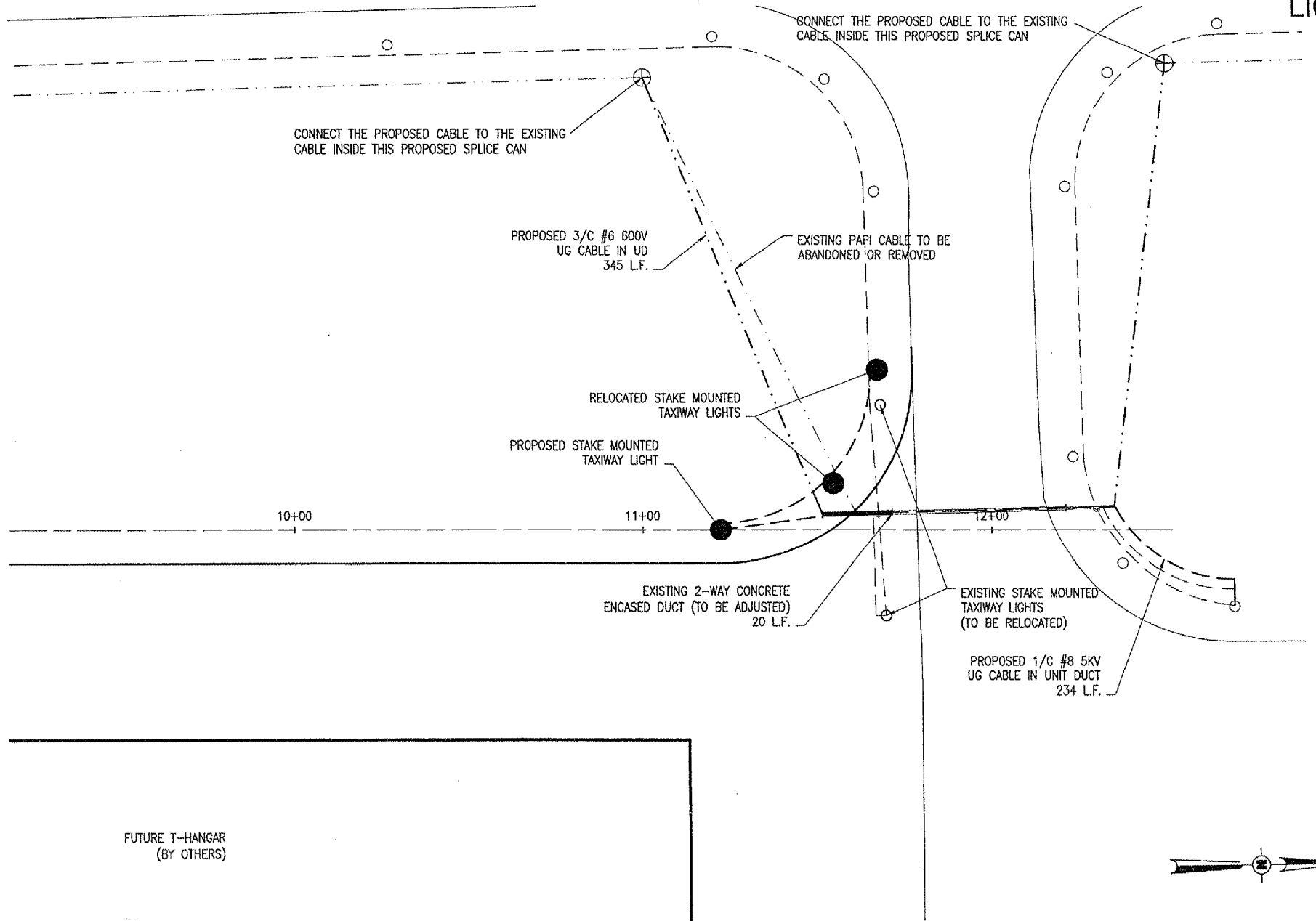
**DUCT EXTENSION NOTES**

THE EXISTING 2-WAY CONCRETE ENCASED DUCT SHOWN ON THIS SHEET WILL BE EXTENDED TO A MINIMUM OF 3' FROM THE PROPOSED PAVEMENT EDGE.

THE EXISTING CABLE INSIDE THE DUCT CAN BE REMOVED DURING THE EXTENSION. HOWEVER, THE LIGHTING CIRCUITS WILL BE TEMPORARIED UNTIL THE DUCT IS EXTENDED AND THE NEW CABLE IN PLACE.

THE CONTRACTOR WILL ENCASE THE DUCTS WITH CONCRETE AFTER THEY HAVE BEEN EXTENDED.

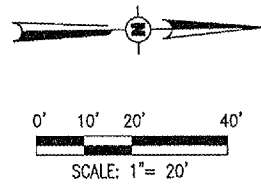
THE DUCT EXTENSION WILL BE PAID FOR UNDER THE FOLLOWING ITEM:  
AR110941 "ADJUST 2-WAY CONCRETE ENCASED DUCT" \_ \_ \_ 20 L.F.



**55' RADIUS LIGHTING DETAIL**  
"NOT TO SCALE"

**LEGEND**

- EXISTING STAKE MOUNTED TAXIWAY LIGHT
- EXISTING STAKE MOUNTED TAXIWAY LIGHT (TO BE RELOCATED)
- PROPOSED RELOCATED STAKE MOUNTED TAXIWAY LIGHT
- ⊕ EXISTING SPLICE CAN
- EXISTING NO. 8, 5 KV. 1/C, TYPE C CABLE IN UNIT DUCT (TAXIWAY C CIRCUIT)
- EXISTING NO. 6, 600V 3/C, TYPE C CABLE IN UNIT DUCT (PAPI CIRCUIT)
- PROPOSED NO. 8, 5 KV. 1/C, TYPE C CABLE IN UNIT DUCT (TAXIWAY C CIRCUIT)
- PROPOSED NO. 6, 600V 3/C, TYPE C CABLE IN UNIT DUCT (PAPI CIRCUIT)
- ▬ EXISTING CONCRETE ENCASED DUCT
- ▬ PROPOSED CONCRETE ENCASED DUCT ADJUSTMENT



DATE	REVISION	BY

LITCHFIELD MUNICIPAL AIRPORT  
LITCHFIELD, ILLINOIS

IRI Project No. 814-05THGD Filename R-141ELE.DWG Scale 1"=20' Date 03/30/05	LAYOUT JMB 03/30/05 DRAWN JMB 03/30/05 REVIEWED CAH xx/xx/xx
--	--



T-HANGAR  
SITE DEVELOPMENT  
PROPOSED  
ELECTRICAL  
PLAN

JUN 14, 2005 9:19 AM CAH I:\AIRPORTS\LITCHFIELD\814-05THGD\AIRPORT SHEETS\R-141ELE.DWG - Layout1