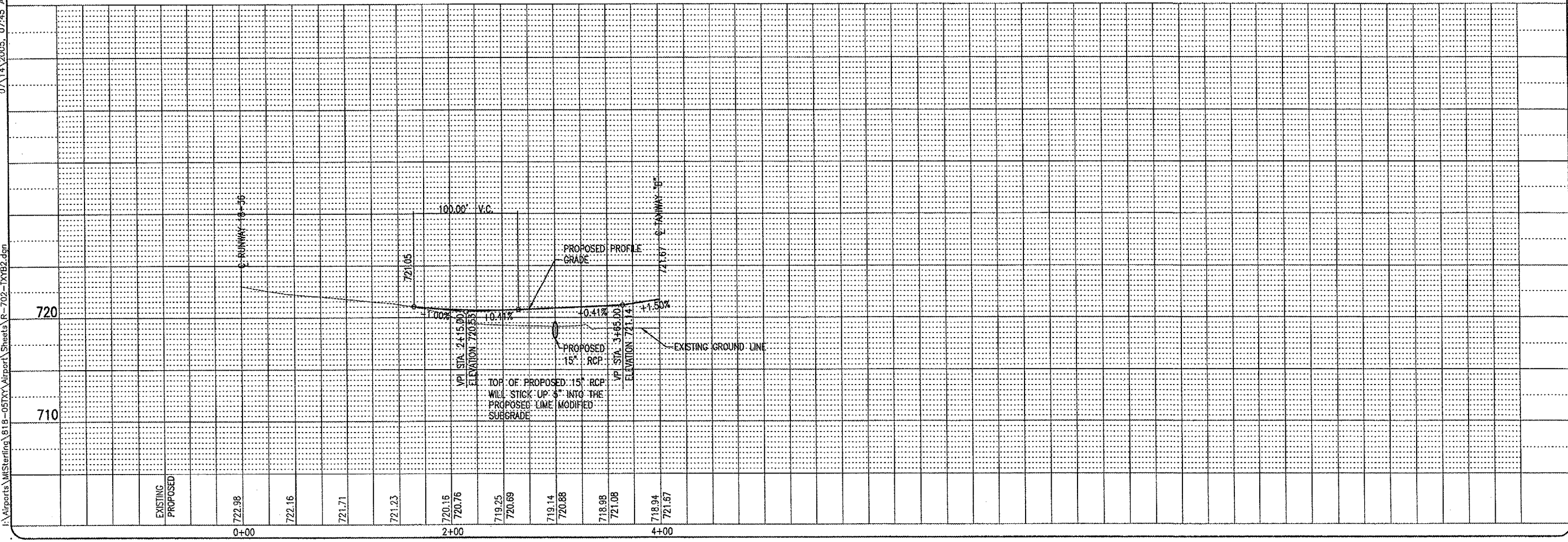
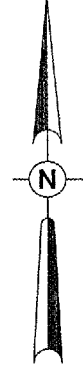
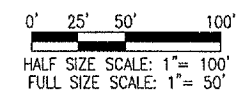
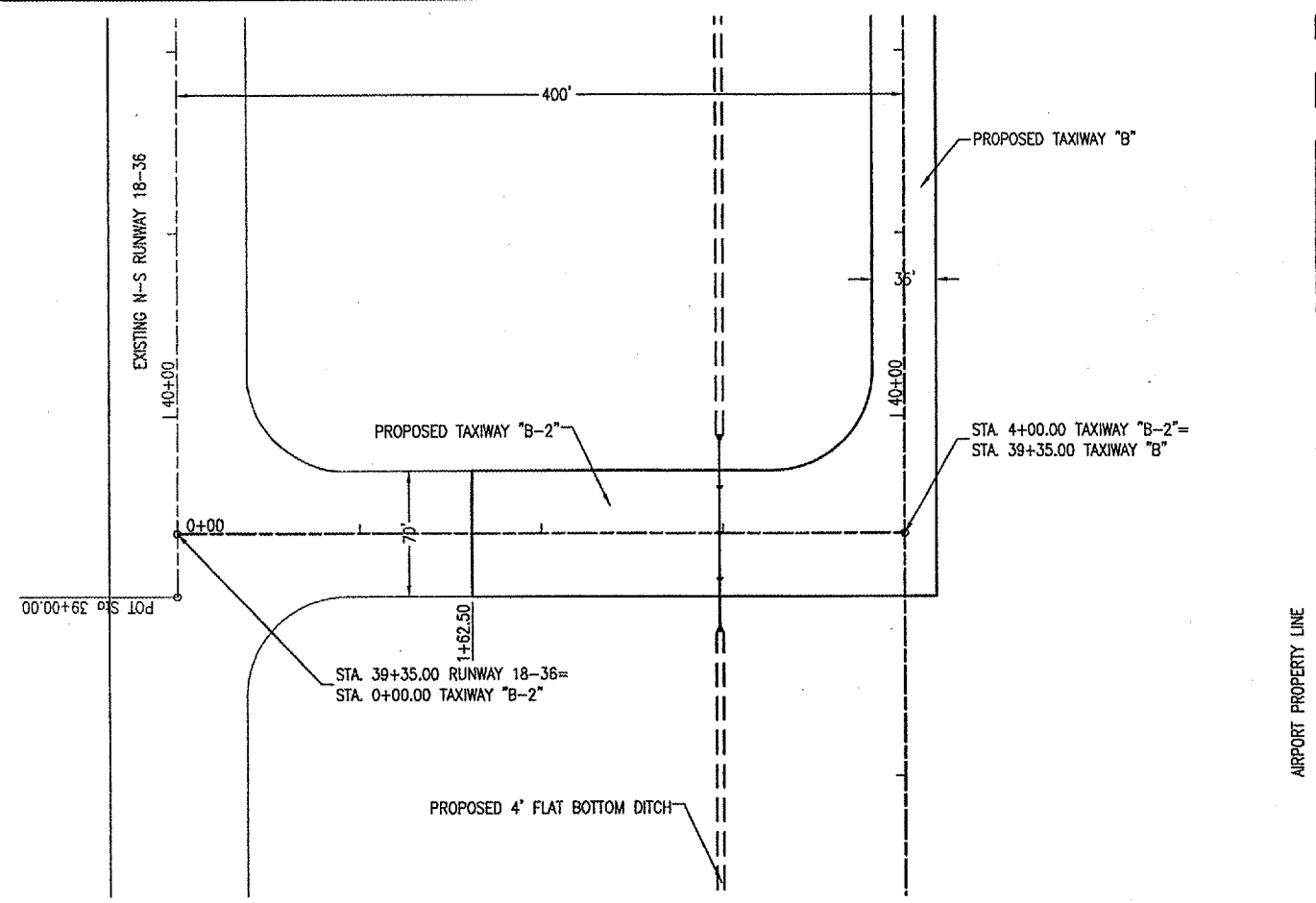


I:\Airports\MTSterling\818-05TX\Airport\Sheets\R-702-TXB2.dgn 07/14/2005, 07:45 AM Bak

MS002



REVISION	DATE	BY

MT. STERLING MUNICIPAL AIRPORT
 MT. STERLING, ILLINOIS
 I.L. PROJ.: 163-3431 A.I.P. PROJ.: 3-17-0147-B6

FILE Project No. 818-05TX	DATE 07/14/2005, 07:45 AM
Filename R-702-TXB2.dgn	LAYOUT JEO 03/14/05
SCALE	DRAWN JMB 03/21/05
SCALE	REVIEWED CAH 05/17/05

HANSON
 Hanson Professional Services Inc.
 1525 South Sixth Street
 Springfield, Illinois 62703-2886
 Offices Nationwide

PARALLEL TAXIWAY
 TAXIWAY "B2"
 PROPOSED
 PLAN & PROFILE
 STA. 0+00 TO STA. 4+00