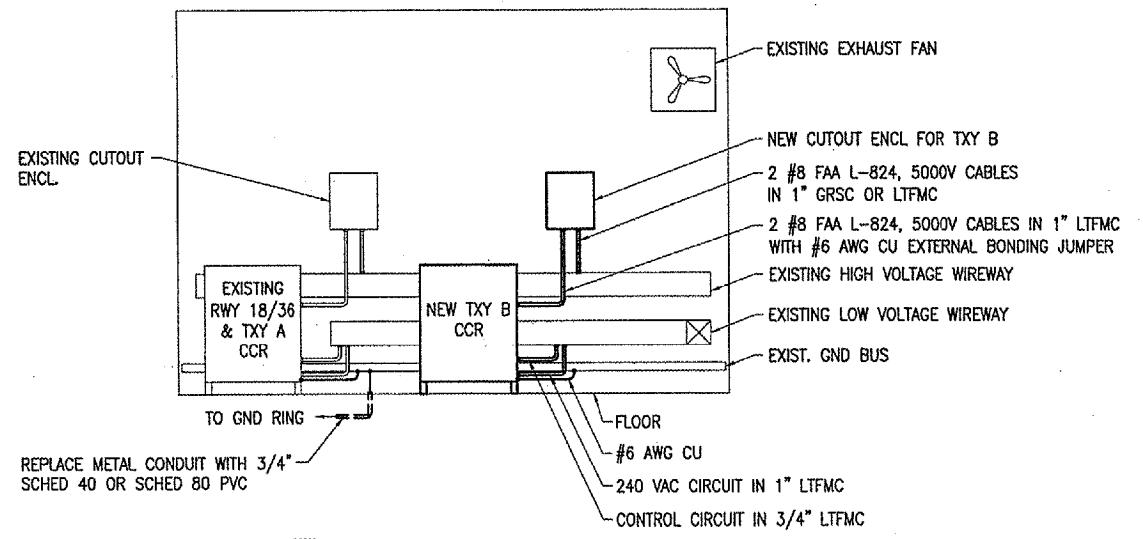
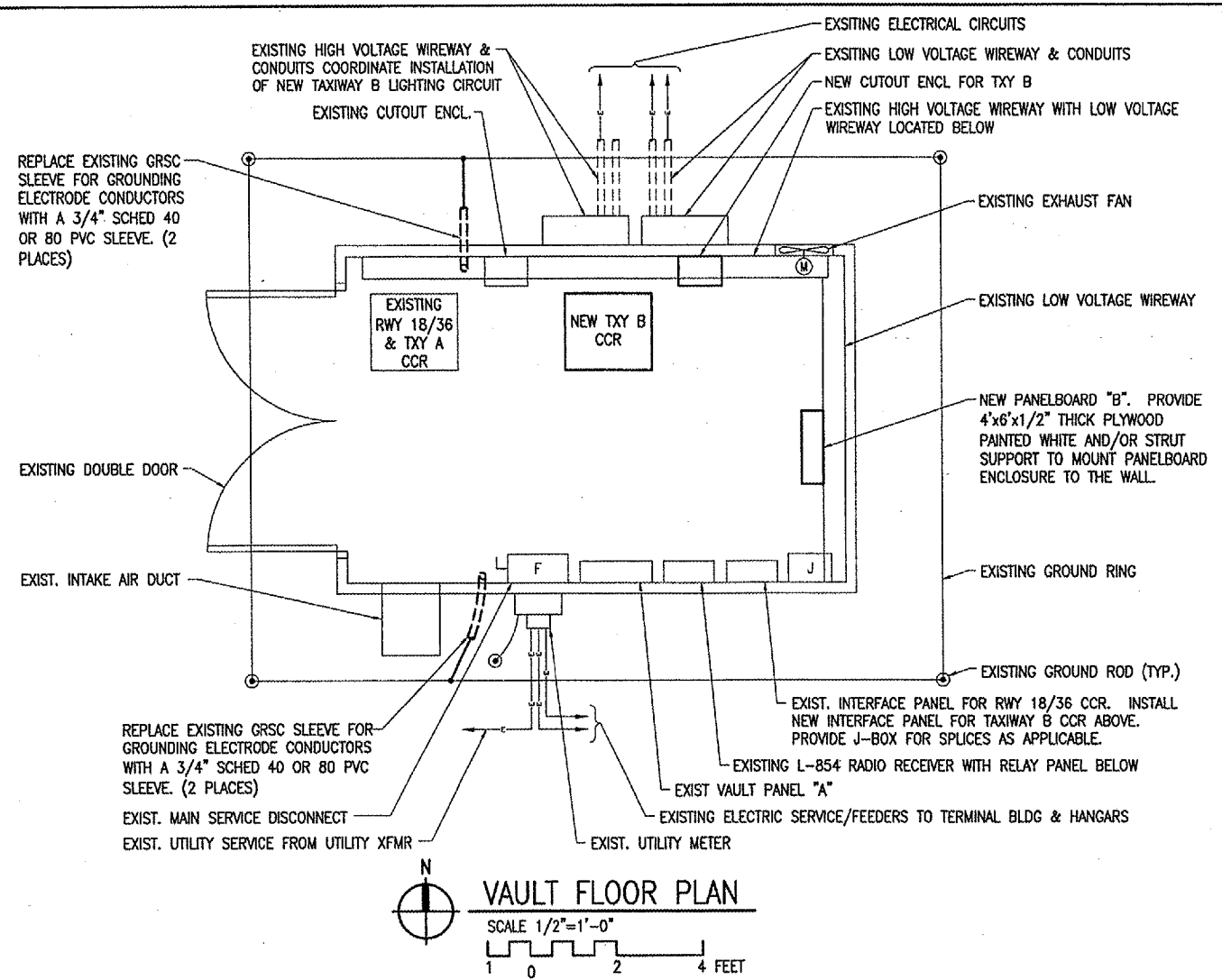
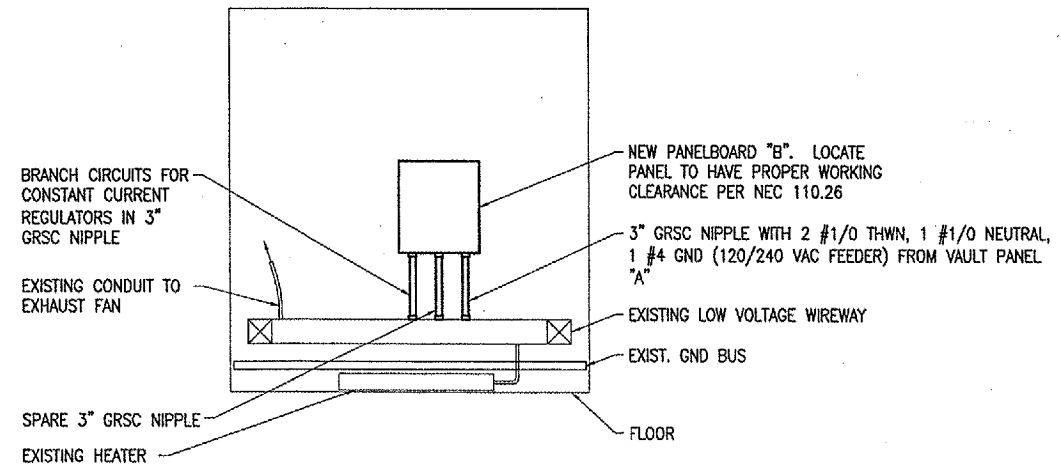


THE LOCATION, SIZE AND TYPE OF MATERIAL OF EXISTING UNDERGROUND UTILITIES INDICATED ON THE PLANS IS NOT REPRESENTED AS BEING ACCURATE, SUFFICIENT OR COMPLETE. IT SHALL BE THE CONTRACTOR'S RESPONSIBILITY TO DETERMINE THE ACTUAL LOCATION OF ALL SUCH FACILITIES, INCLUDING SERVICE CONNECTIONS TO UNDERGROUND UTILITIES. PRIOR TO CONSTRUCTION, THE CONTRACTOR SHALL NOTIFY THE UTILITY COMPANIES OF HIS OPERATIONAL PLANS AND SHALL OBTAIN FROM THE RESPECTIVE UTILITY COMPANIES DETAILED INFORMATION AND ASSISTANCE RELATIVE TO THE LOCATION OF THEIR FACILITIES AND THE WORKING SCHEDULE OF THE COMPANIES FOR REMOVAL OR ADJUSTMENT WHERE REQUIRED. IN THE EVENT AN UNEXPECTED UTILITY INTERFERENCE IS ENCOUNTERED DURING CONSTRUCTION, THE CONTRACTOR SHALL IMMEDIATELY NOTIFY THE UTILITY COMPANY OF JURISDICTION. THE ENGINEER SHALL ALSO BE IMMEDIATELY NOTIFIED. ANY SUCH MAINS AND SERVICES SHALL BE RESTORED TO SERVICE AT ONCE AND PAID FOR BY THE CONTRACTOR AT NO ADDITIONAL COST TO THE CONTRACT.

CALL J.U.L.I.E. FOR UTILITY INFORMATION 1-800-892-0123



NOTE:
ADJUST CONDUIT ENTRY LOCATIONS TO CCR'S AS NECESSARY TO MAINTAIN SEPARATION OF HIGH VOLTAGE & LOW VOLTAGE CABLES.



DATE	REVISION	BY

MT. STERLING MUNICIPAL AIRPORT
MT. STERLING, ILLINOIS
A.I.P. PROJ.: 3-17-0147-B5
IL PROJ.: 163-3323

Project No. 818-DHRWYD			
Revision E-101.DWG			
Scale N/A			
Date 03/21/05			
LAYOUT	KNL	03/14/05	
DRAWN	MV	03/21/05	
REVIEWED	CAH	05/17/05	



PARALLEL TAXIWAY
TAXIWAY "B"
VAULT FLOOR PLAN
& ELEVATIONS

JUL 14, 2005 11:43 AM BAK
I:\AIRPORTS\MSTERLING\818-05TXY\AIRPORT SHEETS\E-101.DWG - Layout1