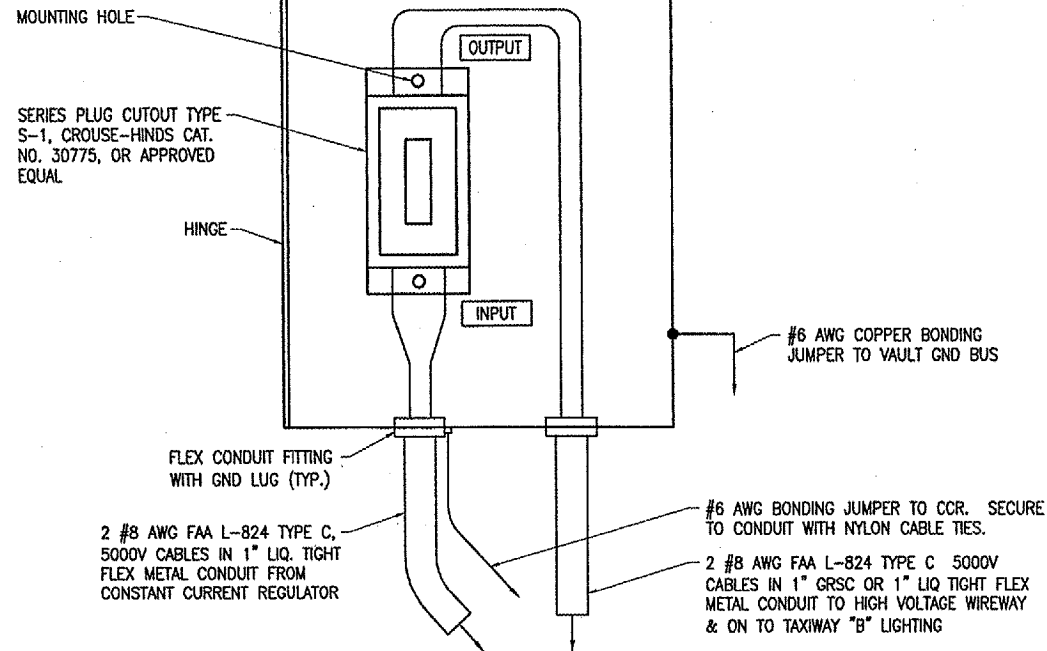
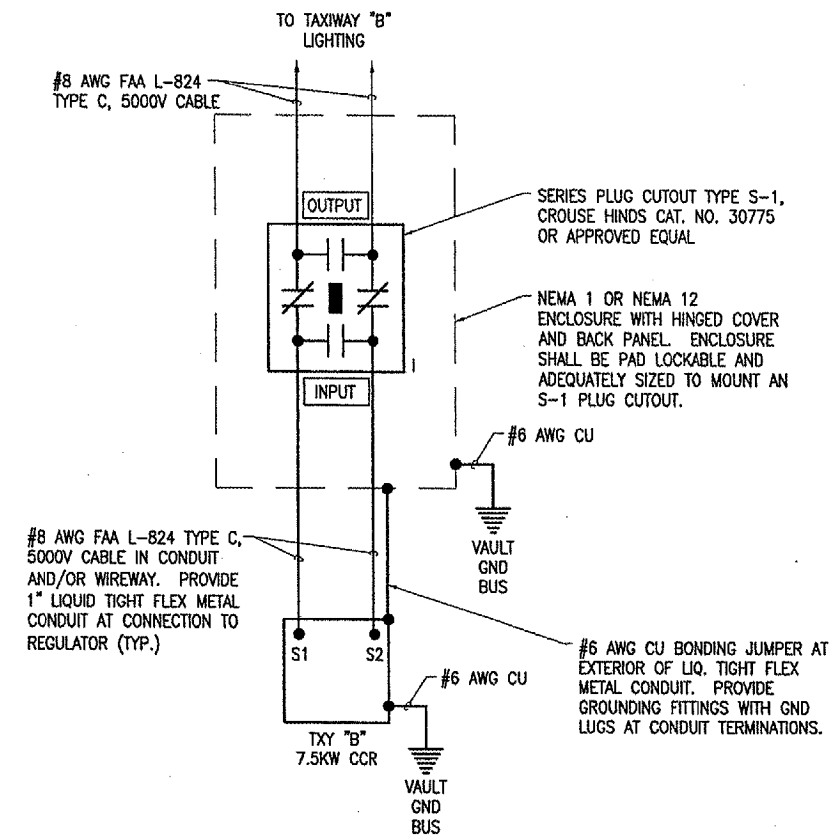


14"H x 12"W x 8"D (APPROXIMATE DIMENSIONS)  
NEMA 1 OR NEMA 12 ENCLOSURE WITH HINGED COVER & BACK PANEL. NOTE FRONT DOOR OF ENCLOSURE NOT SHOWN FOR CLARITY. ADJUST ENCLOSURE DIMENSIONS AS NECESSARY TO ACCOMMODATE THE RESPECTIVE CUTOUT.



**SERIES PLUG CUTOUT MOUNTING DETAIL**

NOT TO SCALE



**HIGH VOLTAGE WIRING SCHEMATIC**

LEGEND PLATE SCHEDULE	
DEVICE	LEGEND PLATE LABEL
VAULT MAIN PANELBOARD	MAIN VAULT PANEL A 120/240 VAC, 1 PH, 3W
VAULT SUB PANELBOARD "B"	PANEL B 120/240 VAC 1 PH, 3W FED FROM MAIN PANEL A
RUNWAY 18/36 & TAXIWAY A CCR	RUNWAY 18/36 & TAXIWAY A
TAXIWAY B CCR	TAXIWAY B
CUTOUT ENCLOSURE FOR RUNWAY 18/36 & TAXIWAY A CCR	RUNWAY 18/36 & TAXIWAY A
CUTOUT ENCLOSURE FOR TAXIWAY B CCR	TAXIWAY B
EACH CUTOUT LINE SIDE CONNECTION	INPUT
EACH CUTOUT LOAD SIDE CONNECTION	OUTPUT
INTERFACE PANEL FOR RUNWAY 18/36 CCR	RUNWAY 18/36 & TAXIWAY A
INTERFACE PANEL FOR TAXIWAY B CCR	TAXIWAY B
HIGH VOLTAGE WIREWAY	HIGH VOLTAGE
LOW VOLTAGE WIREWAY (EACH WALL)	LOW VOLTAGE

**NOTES**  
ALL LEGEND PLATES SHALL BE ENGRAVED PHENOLIC OR PLASTIC MATERIAL, BLACK LETTERS ON A WHITE BACKGROUND.

**NOTES**

1. PROVIDE PHENOLIC ENGRAVED LEGEND PLATES FOR EACH CONSTANT CURRENT REGULATOR (EXISTING & NEW) NOTING THE RUNWAY AND/OR TAXIWAY SERVED.
2. EACH PLUG CUTOUT CABINET (EXISTING & NEW) SHALL BE FURNISHED WITH A PHENOLIC ENGRAVED LEGEND PLATE THAT IDENTIFIES THE RESPECTIVE RUNWAY/TAXIWAY CIRCUIT OR REGULATOR.
3. PROVIDE PHENOLIC ENGRAVED LEGEND PLATES FOR EACH CUTOUT (EXISTING & NEW) TO IDENTIFY THE RESPECTIVE REGULATOR OUTPUT CONNECTION AND THE RESPECTIVE CIRCUIT LOAD CONNECTION.
4. BOND EACH PLUG CUTOUT CABINET (EXISTING & NEW) TO THE VAULT GROUND BUS WITH A #6 AWG COPPER BONDING JUMPER.
5. PROVIDE ADEQUATE WORKING SPACE IN FRONT OF EACH CUTOUT ENCLOSURE TO MEET NEC CLEARANCE REQUIREMENTS.
6. PROVIDE WARNING SIGN ON VAULT DOOR LABELED "DANGER - HIGH VOLTAGE - KEEP OUT" PER THE REQUIREMENTS OF NEC 110.34 (C).
7. LIQUID TIGHT FLEXIBLE METAL CONDUIT SHALL BE U.L. LISTED SUITABLE FOR GROUNDING. LIQUID TIGHT FLEXIBLE METAL CONDUIT THAT IS NOT LISTED SUITABLE FOR GROUNDING SHALL REQUIRE AN EXTERNAL OR INTERNAL #6 AWG COPPER BONDING JUMPER WITH APPROPRIATE GROUNDING FITTINGS OR LUGS. LIQUID TIGHT FLEXIBLE METAL CONDUIT THAT IS USED FOR FLEXIBILITY (INCLUDING CONNECTIONS TO CCR'S & TRANSFORMERS) SHALL REQUIRE AN EXTERNAL BONDING JUMPER OR INTERNAL EQUIPMENT GROUNDING CONDUCTOR PER NEC 350.60.

**LEGEND**

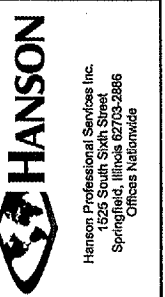
- "I" DENOTES PLUG CUTOUT WITH PLUG INSERTED
- "P" DENOTES PLUG CUTOUT WITH PLUG PULLED
- "CCR" DENOTES CONSTANT CURRENT REGULATOR

REVISION	DATE	BY

MT. STERLING MUNICIPAL AIRPORT  
MT. STERLING, ILLINOIS

IL PROJ.: 163-3323 A.I.P. PROJ.: 3-17-0147-B5

HEI Project No. 818-04RWYD	Scale N/A	Date 03/21/05
Drawn by KNL	Checked by CAH	Reviewed by CAH
Drawn on 03/14/05	Checked on 03/21/05	Reviewed on 05/17/05



PARALLEL TAXIWAY TAXIWAY "B" HIGH VOLTAGE WIRING SCHEMATIC