

IMAGE FILES: palwaukee\_logop.jpg

PA048

R:\Palwaukee\0429003\Draw\Sheets\FILE: ty-light2.dwg  
LAYOUT: Layout1  
UPDATE BY: johse  
SURVEY BOOK #  
DATE: Fri 7/1/05 4:30pm  
XREF DWG: tbcint.dwg  
tb.dwg  
ty-base.dwg

REVISIONS		
NUMBER	BY	DATE

0 1 2  
THIS BAR IS EQUAL TO 2" AT FULL SCALE (34X22).


**PALWAUKEE MUNICIPAL AIRPORT  
WHEELING/PROSPECT HEIGHTS, ILLINOIS**

**CONSTRUCT TAXIWAY CHARLIE AND EAST QUADRANT APRON**

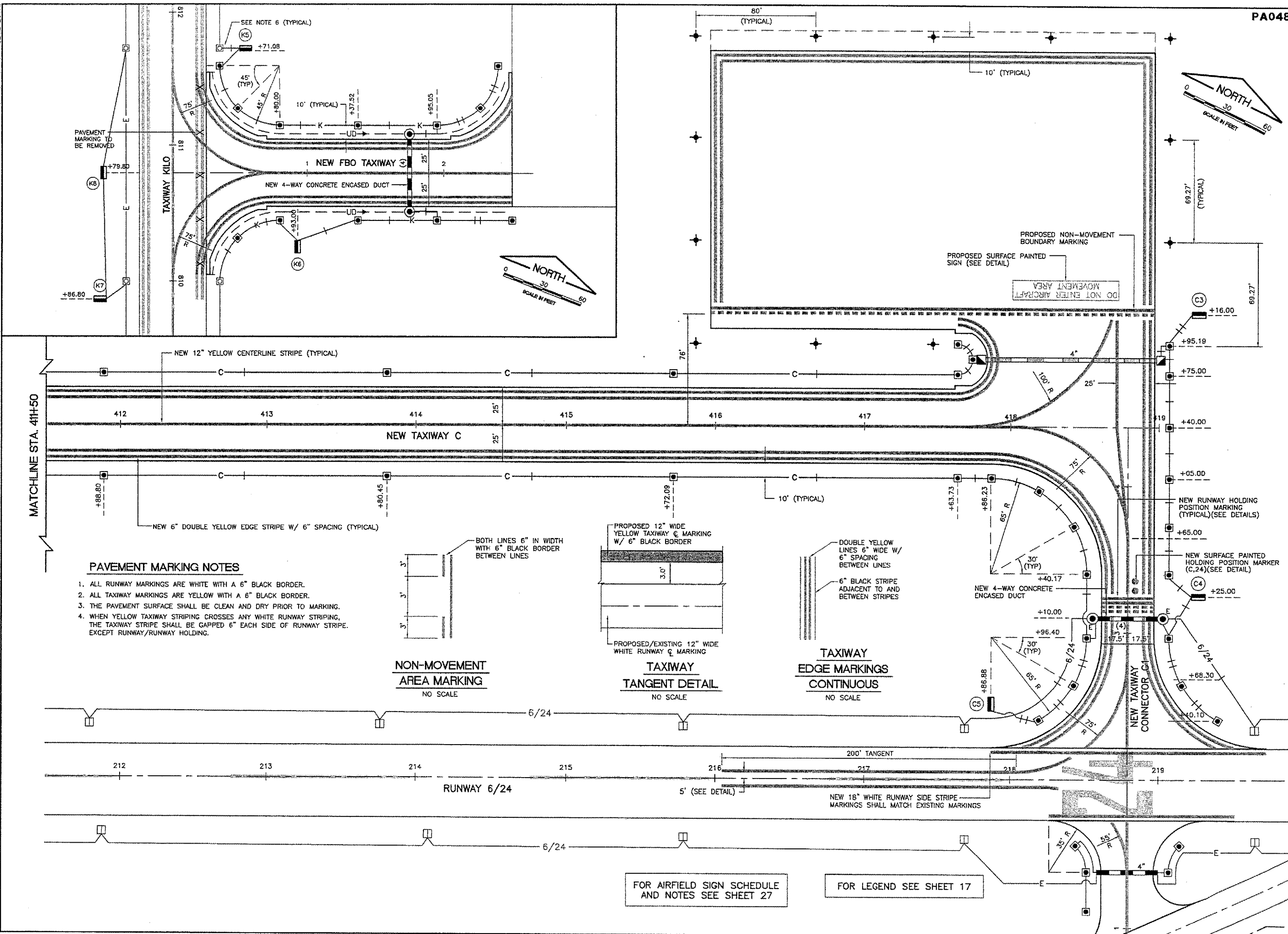
**LIGHTING AND PAVEMENT MARKING PLAN - SHEET 2**

© Copyright G.M.T., Inc.

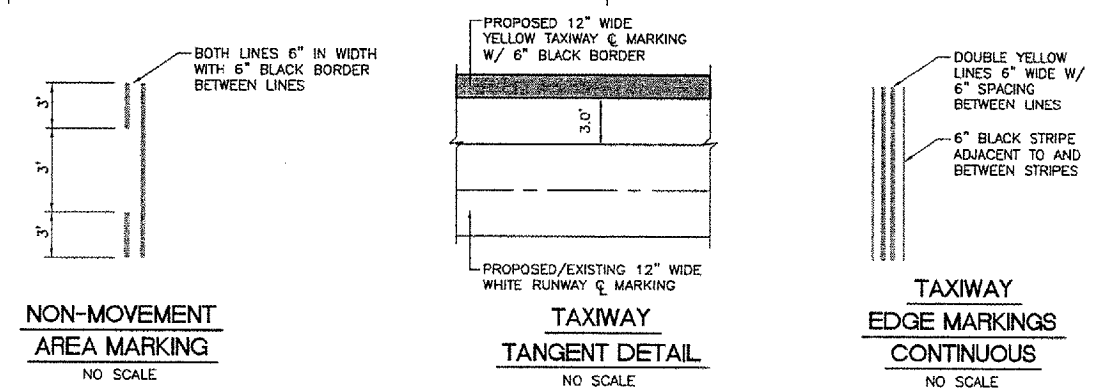
**G.M.T.**  
CRAWFORD, MURPHY & TILLY, INC.  
CONSULTING ENGINEERS  
License No. 184-000618



DESIGN BY:	ARM
DRAWN BY:	JRO
CHECKED BY:	
APPROVED BY:	
DATE:	06/24/05
JOB No:	04290-03
ILLINOIS PROJECT:	PWK-3481
A.I.P. PROJECT:	3-17-0018-BXX
SHEET 18 OF 38 SHEETS	



- PAVEMENT MARKING NOTES**
1. ALL RUNWAY MARKINGS ARE WHITE WITH A 6" BLACK BORDER.
  2. ALL TAXIWAY MARKINGS ARE YELLOW WITH A 6" BLACK BORDER.
  3. THE PAVEMENT SURFACE SHALL BE CLEAN AND DRY PRIOR TO MARKING.
  4. WHEN YELLOW TAXIWAY STRIPING CROSSES ANY WHITE RUNWAY STRIPING, THE TAXIWAY STRIPE SHALL BE GAPPED 6" EACH SIDE OF RUNWAY STRIPE, EXCEPT RUNWAY/RUNWAY HOLDING.



FOR AIRFIELD SIGN SCHEDULE AND NOTES SEE SHEET 27

FOR LEGEND SEE SHEET 17