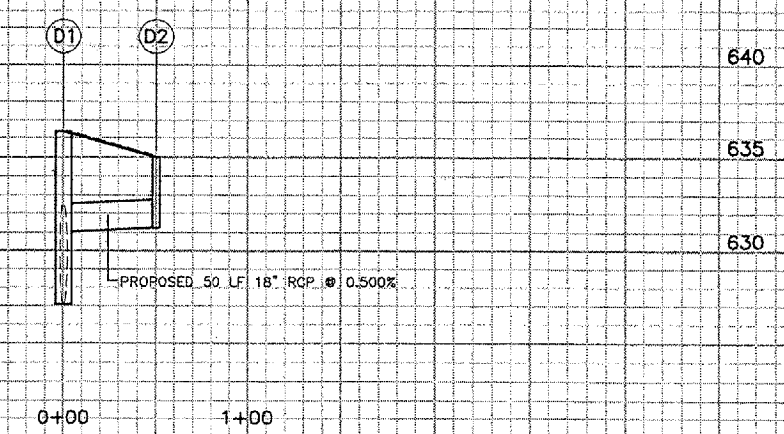
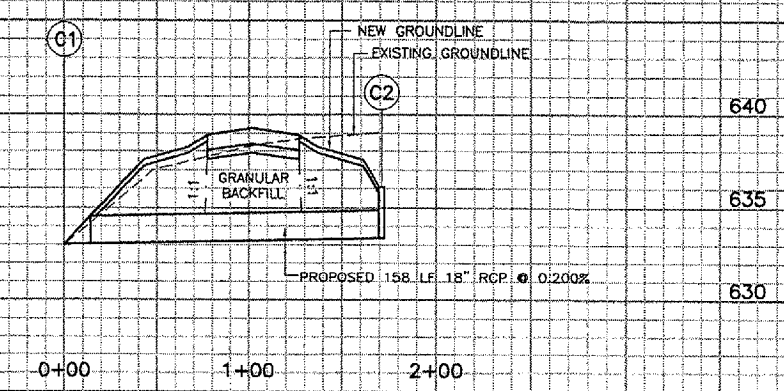
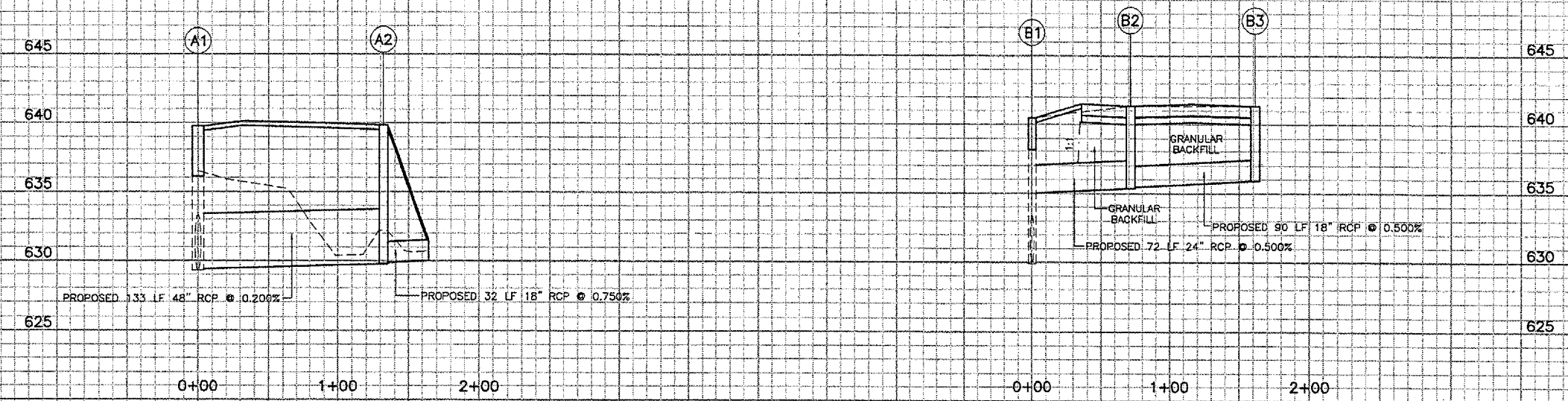
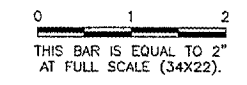


REVISIONS		
NUMBER	BY	DATE



STORM SEWER SCHEDULE

NUMBER	LOCATION	DESCRIPTION	RIM	INVERT
A1	415+82, 41.5' LT. C NEW TAXIWAY C	EXISTING 6' MANHOLE W/ TYPE 1 FRAME AND OPEN LID TO BE RECONSTRUCTED	NEW=639.75 EXISTING=636.07	EXISTING 48" (S) = 629.29 EXISTING 48" (E) = 629.29 NEW 48" (W) = 629.48
A2	414+50, 41.5' LT. C NEW TAXIWAY C	NEW 6' MANHOLE W/ TYPE 1 FRAME AND OPEN LID	NEW=639.85	NEW 48" (E) = 629.66 NEW 18" (N) = 629.76
A3	414+50, 73.5' LT. C NEW TAXIWAY C	NEW 18" FLARED END SECTION W/ GRATE	-	NEW 18" (N) = 630.00
B1	417+63.58, 37.9' LT. C NEW TAXIWAY C	EXISTING 6' MANHOLE W/ TYPE 1 FRAME AND OPEN LID TO BE RECONSTRUCTED	NEW=640.40 EXISTING=637.02	EXISTING 48" (W) = 629.56 EXISTING 42" (E) = 629.80 NEW 24" (N) = 635.00
B2	417+91.86, 103' LT. C NEW TAXIWAY C	NEW 6' MANHOLE W/ TYPE 1 FRAME AND OPEN LID	NEW=641.35	NEW 24" (S) = 635.34 NEW 18" (W) = 635.44
B3	417+01.86, 103' LT. C NEW TAXIWAY C	NEW 6' MANHOLE W/ TYPE 1 FRAME AND OPEN LID	NEW=641.35	NEW 18" (E) = 635.89
C1	408+00, 69' LT. C NEW TAXIWAY C	NEW TYPE 1 INLET W/ FRAME AND GRATE	NEW=636.10	NEW 18" (S) = 633.34
C2	408+00, 103' RT. C NEW TAXIWAY C	NEW 18" SLOPE BOX W/ GRATE	-	NEW 18" (N) = 633.00
D1	2+58.07, 77' RT. C NEW TAXIWAY CONNECTOR C1	EXISTING 9' MANHOLE W/ TYPE 1 FRAME AND CLOSED LID	EXISTING=636.35	EXISTING 66" (E) = 627.08 EXISTING 66" (W) = 627.15 EXISTING 8" PVC (S) = 630.54 NEW 18" (N) = 631.00
D2	3+07.75, 77' RT. C NEW TAXIWAY CONNECTOR C1	NEW 6' MANHOLE W/ TYPE 1 FRAME AND OPEN LID	NEW =635.00	NEW 18" (S) = 631.25
E1	2+44.57, 20.2' LT. C NEW FBO TAXIWAY	EXISTING 6' MANHOLE W/ TYPE 1 FRAME AND CLOSED LID TO BE ADJUSTED	NEW=641.78 EXISTING=640.80	EXISTING 48" (N) = 631.63 EXISTING 48" (S) = 631.63 EXISTING 18" (W) = TO BE BRICK AND MORTARED

**PALWAUKEE MUNICIPAL AIRPORT
 WHEELING/PROSPECT HEIGHTS, ILLINOIS**

CONSTRUCT TAXIWAY CHARLIE AND EAST QUADRANT APRON

**STORM SEWER PROFILES AND
 DRAINAGE SCHEDULE**

© copyright CMT, Inc.

CMT
 CRAWFORD, MURPHY & TILLY, INC.
 CONSULTING ENGINEERS
 License No. 184-000693

DESIGN BY:	JRL/ARM
DRAWN BY:	JRO
CHECKED BY:	
APPROVED BY:	
DATE:	06/24/05
JOB No:	04290-03
ILLINOIS PROJECT:	PWK-3481
A.I.P. PROJECT:	3-17-0018-BXX
SHEET	22 OF 38 SHEETS