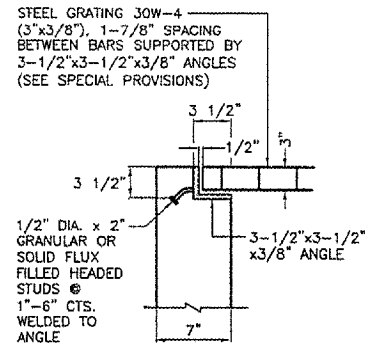
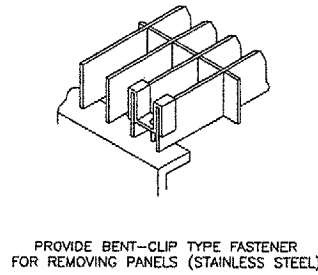


**DETAIL A**  
NO SCALE

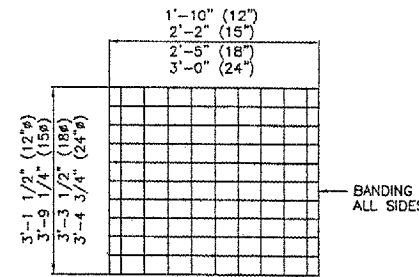


**SECTION-B**  
NO SCALE



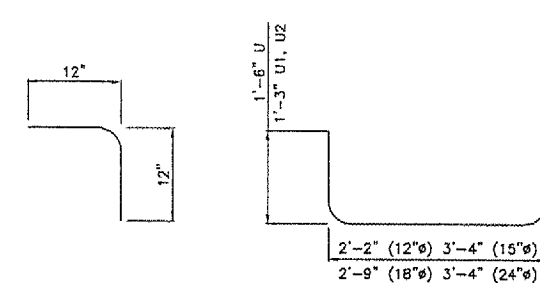
PROVIDE BENT-CLIP TYPE FASTENER FOR REMOVING PANELS (STAINLESS STEEL)

**SADDLE CLIP**  
NO SCALE



**GRATING DETAILS - PLAN VIEW**

NO SCALE  
 ONE SECTION OF GRATING DETAILED.  
 TOTAL OF 3 SECTIONS REQUIRED FOR 12" & 15".  
 TOTAL OF 4 SECTIONS REQUIRED FOR 18"  
 TOTAL OF 5 SECTIONS REQUIRED FOR 24".  
 SEE SPECIAL PROVISIONS FOR FURTHER DETAILS.



**BAR L**  
NO SCALE

**BAR U, U1 AND U2**  
NO SCALE

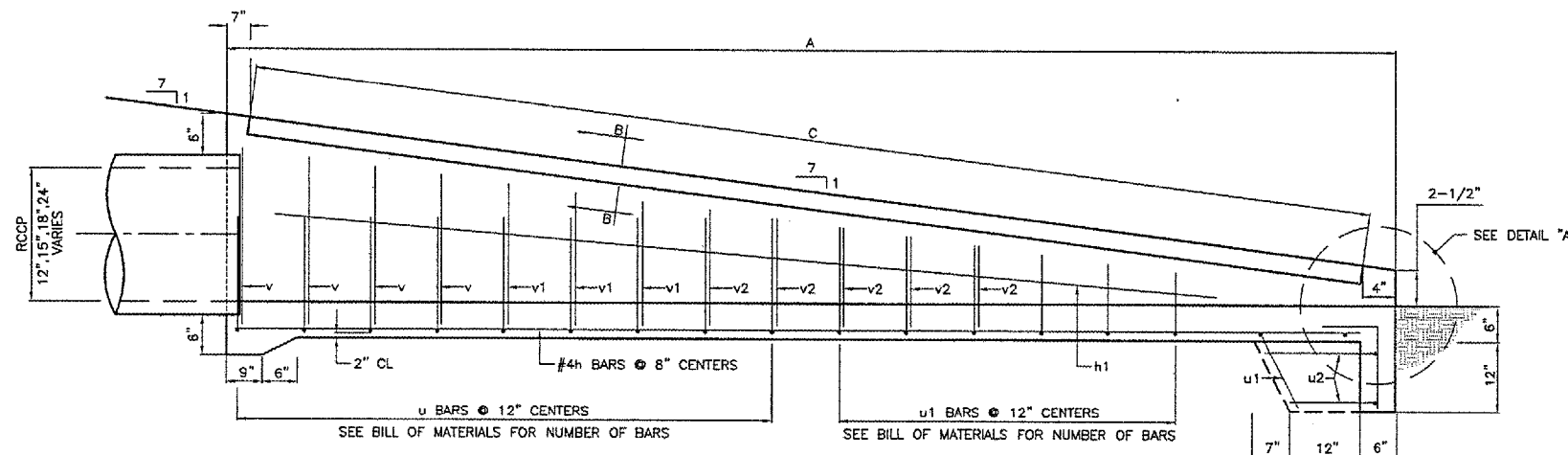
**BILL OF MATERIALS**

**INLET BOX**

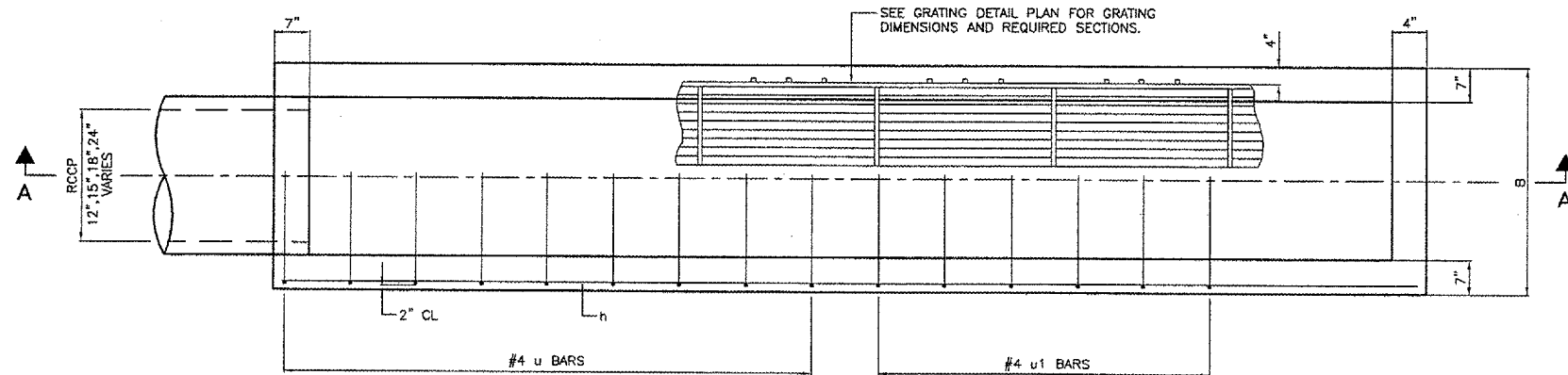
TYPE	BAR	QUANTITY	SIZE	LENGTH
12"	h	4	#4	9'-11"
15"	h	4	#4	11'-7"
18"	h	6	#4	13'-8"
24"	h	6	#4	17'-6"
12"	h1	2	#4	8'-0"
15"	h1	2	#4	10'-0"
18"	h1	2	#4	12'-0"
24"	h1	2	#4	15'-0"
12"	L	4	#4	2'-0"
15"	L	4	#4	2'-0"
18"	L	4	#4	2'-0"
24"	L	4	#4	2'-0"
12"	U	4	#4	5'-2"
15"	U	6	#4	5'-6"
18"	U	8	#4	5'-9"
24"	U	12	#4	6'-4"
12"	U1	4	#4	4'-8"
15"	U1	3	#4	5'-0"
18"	U1	4	#4	5'-3"
24"	U1	4	#4	5'-10"
12"	U2	2	#4	4'-8"
15"	U2	2	#4	5'-0"
18"	U2	2	#4	5'-3"
24"	U2	2	#4	5'-10"
12"	V	4	#4	1'-4"
15"	V	4	#4	1'-8"
18"	V	6	#4	1'-10"
24"	V	6	#4	2'-5"
12"	V1	-	#4	-
15"	V1	4	#4	1'-4"
18"	V1	6	#4	1'-5"
24"	V1	6	#4	2'-0"
12"	V2	-	#4	-
15"	V2	-	#4	-
18"	V2	-	#4	-
24"	V2	8	#4	1'-6"
<b>CONCRETE STRUCTURES</b>				
12"		CU.YD.	2	
15"		CU.YD.	2	
18"		CU.YD.	3	
24"		CU.YD.	3	
<b>REINFORCEMENT BARS</b>				
12"		POUND	85	
15"		POUND	100	
18"		POUND	145	
24"		POUND	200	
<b>GRATING</b>				
12"		SG.FT.	18	
15"		SG.FT.	25	
18"		SG.FT.	32	
24"		SG.FT.	51	

**TABLE OF DIMENSIONS**

DIMENSION	12"φ	15"φ	18"φ	24"φ
A	10'-3"	12'-1"	14'-0"	17'-10"
B	2'-6"	2'-10"	3'-1"	3'-8"
C	9'-5"	11'-4"	13'-3"	17'-1"



**SECTION A-A**  
NO SCALE

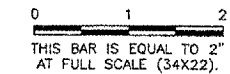


**PLAN**  
NO SCALE

MANUFACTURED BY MC CARR CONCRETE PRODUCTS OR EQUAL.

REVISIONS

NUMBER	BY	DATE



**PALWAUKEE MUNICIPAL AIRPORT**  
**WHEELING/PROSPECT HEIGHTS, ILLINOIS**  
**CONSTRUCT TAXIWAY CHARLIE AND EAST QUADRANT APRON**  
**SLOPE BOX INLET DETAILS**

© Copyright CMT, Inc.

**CMT**  
 CRAIGFORD, MURPHY & TILLY, INC.  
 CONSULTING ENGINEERS  
 License No. 184-000618

DESIGN BY: ATI  
 DRAWN BY: JRO  
 CHECKED BY:  
 APPROVED BY:  
 DATE: 06/24/05  
 JOB No: 04290-03  
 ILLINOIS PROJECT: PWK-3481  
 A.I.P. PROJECT: 3-17-0018-BXX  
 SHEET 24 OF 38 SHEETS