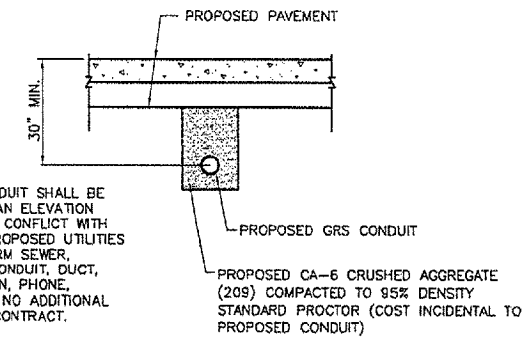
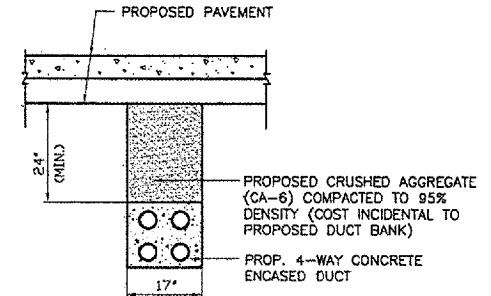


GENERAL NOTES

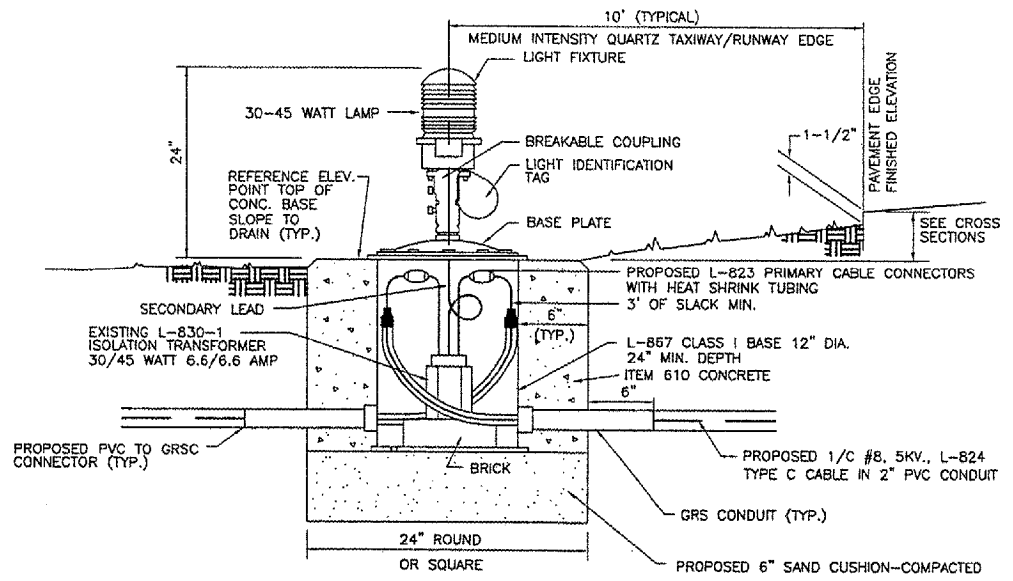
1. THE CONCRETE BASE FOR BASE MOUNTED LIGHTS SHALL BE TROWEL FINISHED WITH A 45° BEVELED EDGE, SLOPE TO DRAIN (610 CONCRETE).
2. TRANSFORMER HOLDER MAY BE ANY COMMERCIALY AVAILABLE BRICK.
3. BREAKING GROOVE COUPLINGS SHALL NOT BE OVER 1" ABOVE GROUND LINE.
4. ISOLATION TRANSFORMERS COME WITH A FACTORY INSTALLED PLUG (TYPE 1, CLASS A, STYLE 2) AND RECEPTACLE (TYPE 1, CLASS A, STYLE 9). A TYPE 1, CLASS B, STYLE 3 PLUG AND TYPE 1, CLASS B, STYLE 10 RECEPTACLE SHALL BE INSTALLED ON THE 1/C, No. 8, 5000 V., L-824 TYPE C CABLES FOR CONNECTION TO EACH TRANSFORMER.
5. TO FURTHER REDUCE THE POSSIBILITY OF WATER/MOISTURE ENTRANCE INTO THE CONNECTOR BETWEEN THE CABLE AND THE FIELD ATTACHED CONNECTOR, IT IS REQUIRED THAT A HEAT SHRINKABLE TUBING WITH INTERNAL ADHESIVE BE APPLIED OVER THE ENTIRE CABLE CONNECTOR.
6. ALL LIGHTS, CABLES AND TRANSFORMERS TO BE REMOVED SHALL REMAIN THE PROPERTY OF THE AIRPORT. AT THE DISCRETION OF THE ASSISTANT MANAGER THE CONTRACTOR MAY BE REQUIRED TO DISPOSE OF THESE MATERIALS OFFSITE.
7. TAXIWAY LIGHTS SHALL HAVE A BLUE LENS. RUNWAY LIGHTS SHALL HAVE A CLEAR LENS OR 180° CLEAR/YELLOW SPLIT LENS AND THRESHOLD LIGHTS SHALL HAVE A 180° RED/GREEN SPLIT LENS.
8. DUCT MARKERS SHALL BE INSTALLED AT EVERY NEW DUCT AND AT EVERY EXISTING DUCT USED FOR THIS PROJECT.



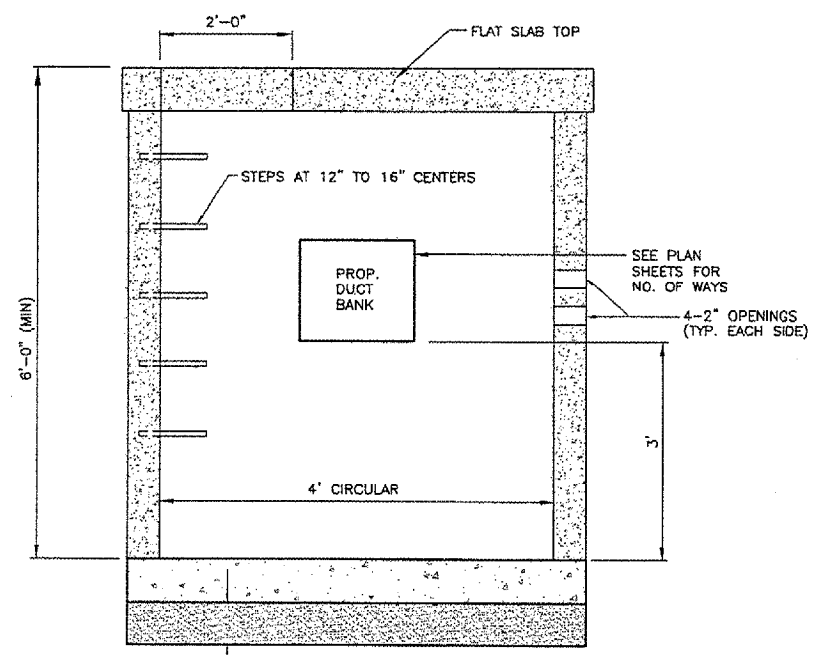
GRS CONDUIT UNDER PROPOSED PAVEMENT DETAIL
 NOT TO SCALE



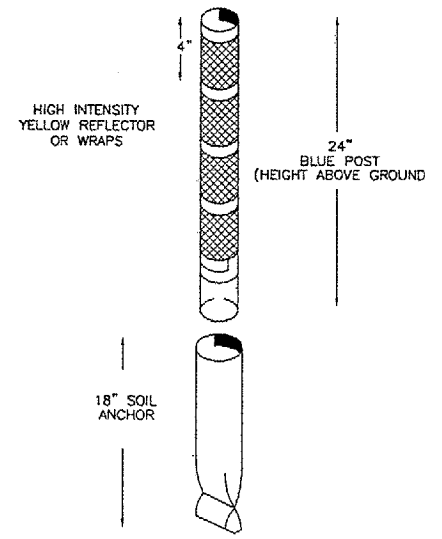
CONC ENCASED (4-WAY) ELECTRICAL DUCT BACKFILL
 NO SCALE



PROPOSED BASE MOUNTED MEDIUM INTENSITY LIGHT
 NOT TO SCALE



ELEVATION ELECTRICAL MANHOLE
 NOT TO SCALE

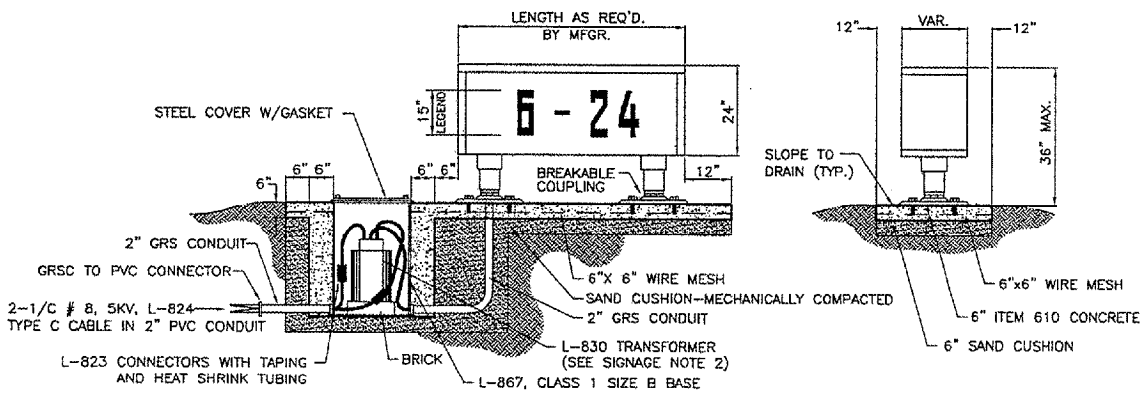


TAXIWAY RETROREFLECTIVE MARKER DETAIL
 NOT TO SCALE

NOTE: RETROREFLECTIVE MARKER SHALL BE UNIPAR, INC. EVAFLEX OR APPROVED EQUAL.

NOTES

1. ELECTRICAL MANHOLE (4' DIA.) SHALL BE PER IDOT STANDARD 602406 AS MODIFIED BY DETAIL ON THE PLANS.
2. ECCENTRIC AND CONCENTRIC CONE TOPS SHALL NOT BE USED. PRECAST REINFORCED CONCRETE FLAT SLAB TOP SHALL BE USED PER IDOT STANDARD 602601 AND 602406.
3. USE TYPE 1 FRAME AND LID MARKED "ELECTRIC" PER IDOT STANDARD 604001
4. PROPOSED ELECTRICAL MANHOLE SHALL ACCOMMODATE 4-2" OPENINGS ON EACH SIDE OF THE MANHOLE.



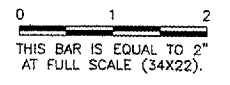
PROPOSED AIRFIELD SIGN L-858
 NOT TO SCALE

SIGNAGE NOTES

1. ALL SIGNS ARE 2-SIDED SIGNS. STYLE 2 AND CLASS 2 AS MANUFACTURED BY SIEMENS OR APPROVED EQUAL.
2. TRANSFORMER WATTAGE AS RECOMMENDED BY MANUFACTURER.
3. LIGHTED SIGNS SHALL BE BASE MOUNTED ONLY.
4. THE NUMBER OF MODULES PER SIGN SHALL BE AS RECOMMENDED BY THE MANUFACTURER.
5. CONTRACTOR SHALL SUBMIT DETAILED SHOP DRAWING INCLUDING SIGN, COLOR, SIZE AND PROPOSED LEGEND, IN ENOUGH DETAIL AND DETERMINE PROPOSED SPACING AND OTHER INFORMATION REQUIRED BY SPECIAL PROVISIONS. CONTRACTOR TO VERIFY PROPOSED SIGN LOCATIONS AND ORIENTATIONS WITH RESIDENT ENGINEER PRIOR TO INSTALLATION. PROPOSED SIGNS SHALL BE LUMACURVE, INC. OR EQUAL.

REVISIONS

NUMBER	BY	DATE



PALWAUKEE MUNICIPAL AIRPORT
WHEELING/PROSPECT HEIGHTS, ILLINOIS
CONSTRUCT TAXIWAY CHARLIE AND EAST QUADRANT APRON
ELECTRICAL DETAILS 2

© Copyright CMT, Inc.
CMT
 CRAWFORD, MURPHY & TILLY, INC.
 CONSULTING ENGINEERS
 License No. 194-000613

DESIGN BY:	ARM
DRAWN BY:	JRO
CHECKED BY:	
APPROVED BY:	
DATE:	06/24/05
JOB No:	04290-03
ILLINOIS PROJECT:	PWK-3481
A.I.P. PROJECT:	3-17-0018-BXX
SHEET	26 OF 38 SHEETS