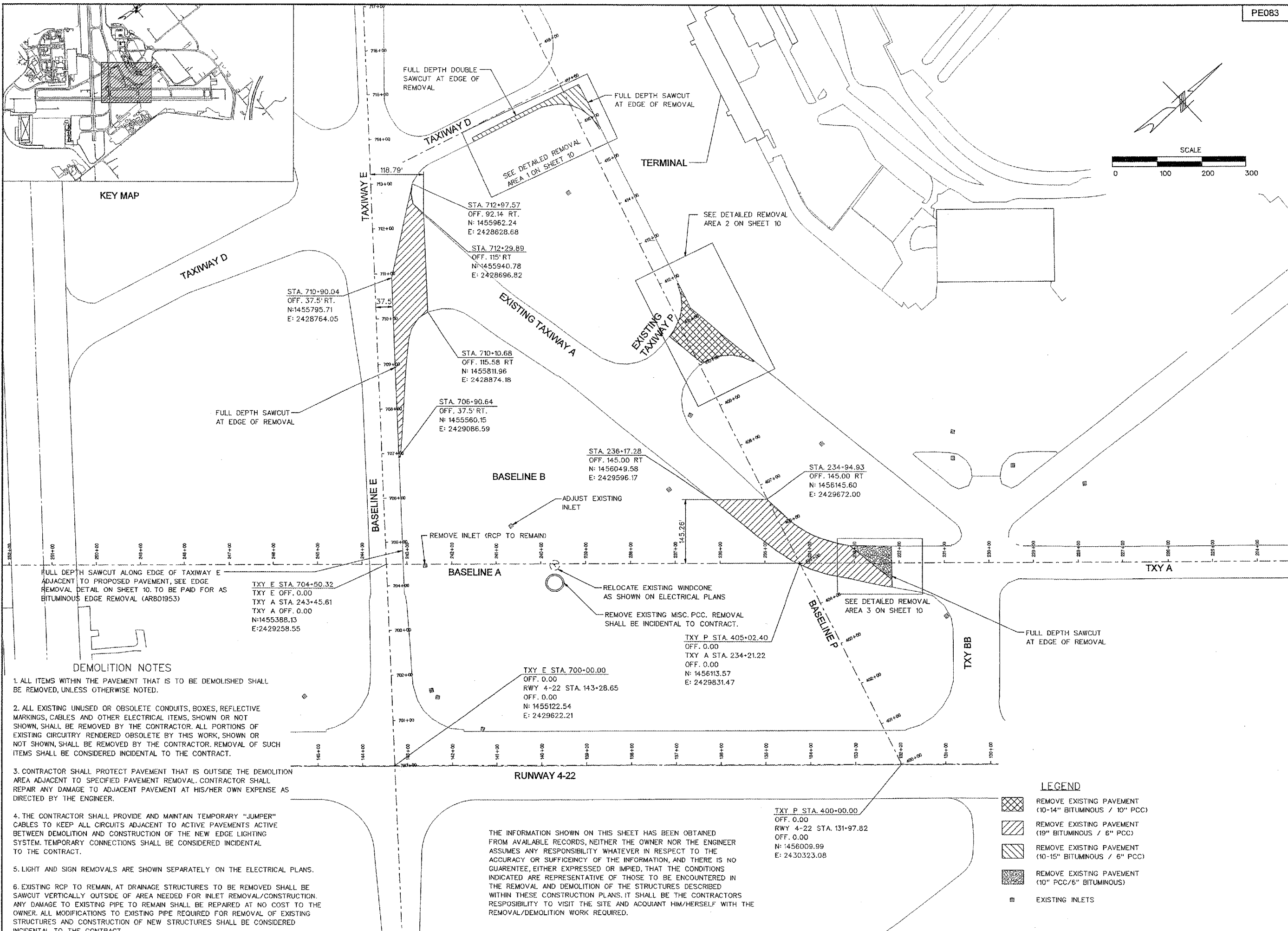
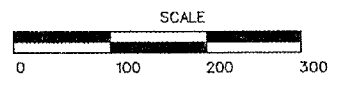


NUMBER	BY	DATE

0 1 2
 THIS BAR IS EQUAL TO 2'
 AT FULL SCALE (34X22).
 PLOT 1



KEY MAP

TERMINAL

EXISTING TAXIWAY A

EXISTING TAXIWAY P

BASELINE B

BASELINE A

BASELINE P

RUNWAY 4-22

TXY A

TXY BB

STA. 710+90.04
 OFF. 37.5' RT.
 N: 1455795.71
 E: 2428764.05

STA. 712+97.57
 OFF. 92.14 RT.
 N: 1455962.24
 E: 2428628.68

STA. 712+29.89
 OFF. 115' RT.
 N: 1455940.78
 E: 2428696.82

STA. 710+10.68
 OFF. 115.58 RT
 N: 1455811.96
 E: 2428874.18

STA. 706+90.64
 OFF. 37.5' RT.
 N: 1455560.15
 E: 2429086.59

STA. 236+17.28
 OFF. 145.00 RT
 N: 1456049.58
 E: 2429396.17

STA. 234+94.93
 OFF. 145.00 RT
 N: 1456145.60
 E: 2429672.00

TXY E STA. 704+50.32
 TXY E OFF. 0.00
 TXY A STA. 243+45.61
 TXY A OFF. 0.00
 N: 1455388.13
 E: 2429258.55

TXY E STA. 700+00.00
 OFF. 0.00
 RWY 4-22 STA. 143+28.65
 OFF. 0.00
 N: 1455122.54
 E: 2429622.21

TXY P STA. 405+02.40
 OFF. 0.00
 TXY A STA. 234+21.22
 OFF. 0.00
 N: 1456113.57
 E: 2429831.47

TXY P STA. 400+00.00
 OFF. 0.00
 RWY 4-22 STA. 131+97.82
 OFF. 0.00
 N: 1456009.99
 E: 2430323.08

THE INFORMATION SHOWN ON THIS SHEET HAS BEEN OBTAINED FROM AVAILABLE RECORDS, NEITHER THE OWNER NOR THE ENGINEER ASSUMES ANY RESPONSIBILITY WHATEVER IN RESPECT TO THE ACCURACY OR SUFFICIENCY OF THE INFORMATION, AND THERE IS NO GUARENTEE, EITHER EXPRESSED OR IMPLIED, THAT THE CONDITIONS INDICATED ARE REPRESENTATIVE OF THOSE TO BE ENCOUNTERED IN THE REMOVAL AND DEMOLITION OF THE STRUCTURES DESCRIBED WITHIN THESE CONSTRUCTION PLANS. IT SHALL BE THE CONTRACTORS RESPONSIBILITY TO VISIT THE SITE AND ACQUAINT HIM/HERSELF WITH THE REMOVAL/DEMOLITION WORK REQUIRED.

FULL DEPTH SAWCUT ALONG EDGE OF TAXIWAY E ADJACENT TO PROPOSED PAVEMENT, SEE EDGE REMOVAL DETAIL ON SHEET 10. TO BE PAID FOR AS BITUMINOUS EDGE REMOVAL (ARBO1953)

FULL DEPTH SAWCUT AT EDGE OF REMOVAL

FULL DEPTH DOUBLE SAWCUT AT EDGE OF REMOVAL

FULL DEPTH SAWCUT AT EDGE OF REMOVAL

FULL DEPTH SAWCUT AT EDGE OF REMOVAL

REMOVE INLET (RCP TO REMAIN)

ADJUST EXISTING INLET

RELOCATE EXISTING WINDCONE AS SHOWN ON ELECTRICAL PLANS

REMOVE EXISTING MISC. PCC. REMOVAL SHALL BE INCIDENTAL TO CONTRACT.

SEE DETAILED REMOVAL AREA 3 ON SHEET 10

SEE DETAILED REMOVAL AREA 1 ON SHEET 10

SEE DETAILED REMOVAL AREA 2 ON SHEET 10

LEGEND

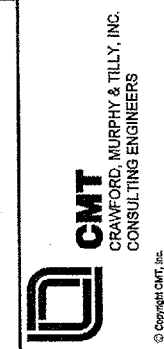
- REMOVE EXISTING PAVEMENT (10-14" BITUMINOUS / 10" PCC)
- REMOVE EXISTING PAVEMENT (19" BITUMINOUS / 6" PCC)
- REMOVE EXISTING PAVEMENT (10-15" BITUMINOUS / 6" PCC)
- REMOVE EXISTING PAVEMENT (10" PCC/6" BITUMINOUS)
- EXISTING INLETS

DEMOLITION NOTES

1. ALL ITEMS WITHIN THE PAVEMENT THAT IS TO BE DEMOLISHED SHALL BE REMOVED, UNLESS OTHERWISE NOTED.
2. ALL EXISTING UNUSED OR OBSOLETE CONDUITS, BOXES, REFLECTIVE MARKINGS, CABLES AND OTHER ELECTRICAL ITEMS, SHOWN OR NOT SHOWN, SHALL BE REMOVED BY THE CONTRACTOR. ALL PORTIONS OF EXISTING CIRCUITRY RENDERED OBSOLETE BY THIS WORK, SHOWN OR NOT SHOWN, SHALL BE REMOVED BY THE CONTRACTOR. REMOVAL OF SUCH ITEMS SHALL BE CONSIDERED INCIDENTAL TO THE CONTRACT.
3. CONTRACTOR SHALL PROTECT PAVEMENT THAT IS OUTSIDE THE DEMOLITION AREA ADJACENT TO SPECIFIED PAVEMENT REMOVAL. CONTRACTOR SHALL REPAIR ANY DAMAGE TO ADJACENT PAVEMENT AT HIS/HER OWN EXPENSE AS DIRECTED BY THE ENGINEER.
4. THE CONTRACTOR SHALL PROVIDE AND MAINTAIN TEMPORARY "JUMPER" CABLES TO KEEP ALL CIRCUITS ADJACENT TO ACTIVE PAVEMENTS ACTIVE BETWEEN DEMOLITION AND CONSTRUCTION OF THE NEW EDGE LIGHTING SYSTEM. TEMPORARY CONNECTIONS SHALL BE CONSIDERED INCIDENTAL TO THE CONTRACT.
5. LIGHT AND SIGN REMOVALS ARE SHOWN SEPARATELY ON THE ELECTRICAL PLANS.
6. EXISTING RCP TO REMAIN, AT DRAINAGE STRUCTURES TO BE REMOVED SHALL BE SAWCUT VERTICALLY OUTSIDE OF AREA NEEDED FOR INLET REMOVAL/CONSTRUCTION. ANY DAMAGE TO EXISTING PIPE TO REMAIN SHALL BE REPAIRED AT NO COST TO THE OWNER. ALL MODIFICATIONS TO EXISTING PIPE REQUIRED FOR REMOVAL OF EXISTING STRUCTURES AND CONSTRUCTION OF NEW STRUCTURES SHALL BE CONSIDERED INCIDENTAL TO THE CONTRACT.



RELOCATE TAXIWAY A FROM MID-FIELD INTERSECTION



IL PROJECT: PIA-3343
 AIP PROJ: 3-17-0080-XX

FILE: k:\peoria\0406103\draw\sheets\010_demo_plan.dgn

DESIGN BY:	TCS
DRAWN BY:	CAG
CHECKED BY:	TCS
APPROVED BY:	CET
DATE:	JUNE 24, 2005
JOB No:	04061-03

DEMOLITION PLAN

06/23/2005 k:\peoria\0406103\draw\sheets\010_demo_plan_1.dgn