

KEY MAP

UNDERDRAIN STRUCTURE SCHEDULE

STRUCTURE	STATION	OFFSET	COORDINATES	
			NORTHING	EASTING
INLET 5	240+75.80	83.40 RT	1455661.56	2429360.33
INLET 6	240+98.21	95.36 LT	1455523.19	2429486.72
INLET 9	240+66.48	87.03 RT	1455661.12	2429363.25

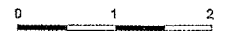
NOTES:

1. DRAINAGE STRUCTURE RM AND INVERT ELEVATION ARE GIVEN IN DRAINAGE DETAILS. (SHEET 20-24)
2. INLET/MANHOLE NUMBERING MAY NOT BE SEQUENTIAL.

PE083

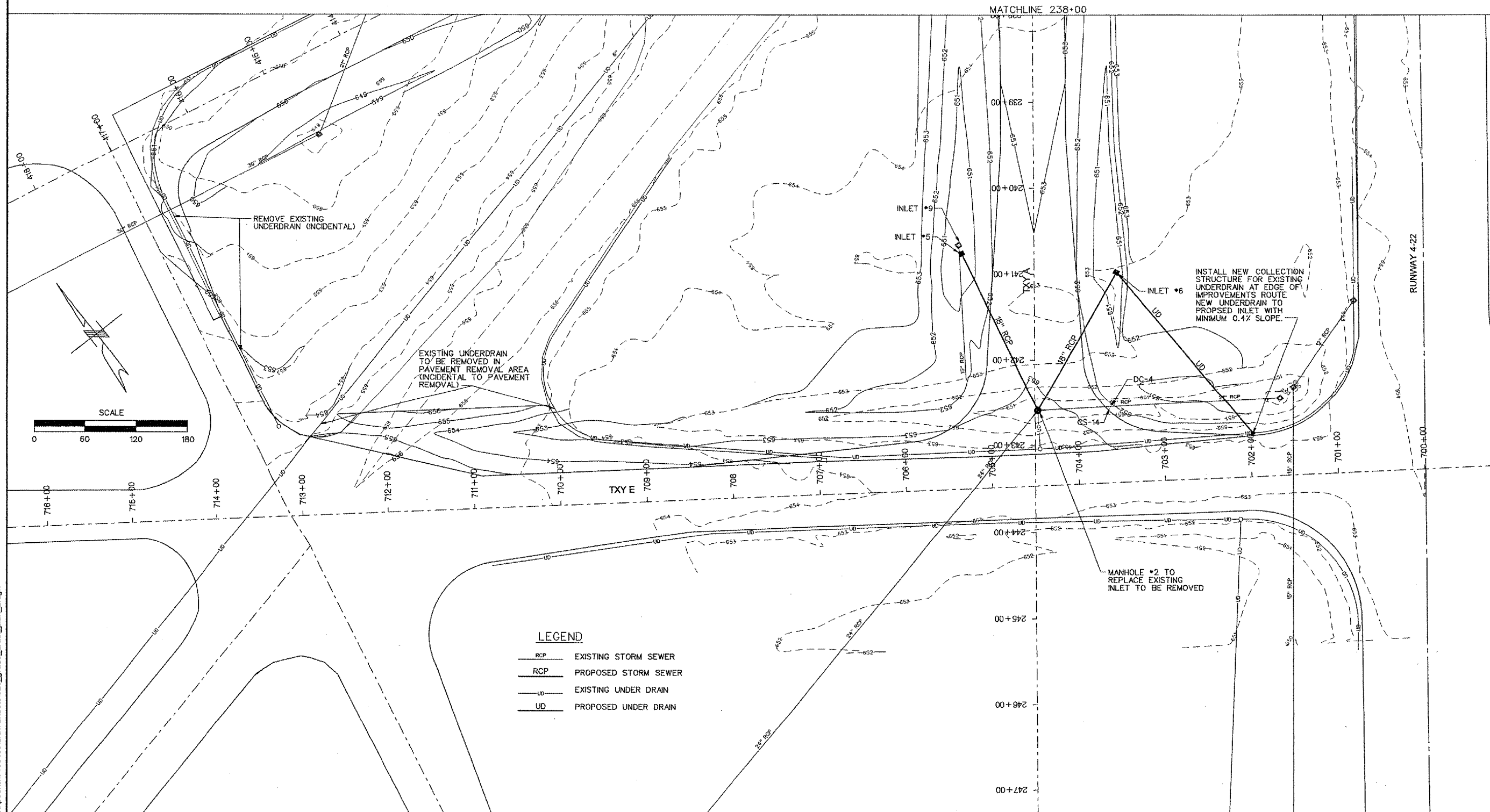
REVISIONS

NUMBER	BY	DATE



THIS BAR IS EQUAL TO 2' AT FULL SCALE (34X22). PLOT 1

NOTE: THE CONTRACTOR SHALL NOTIFY THE ENGINEER OF ANY CONFLICTS FOUND BETWEEN EXISTING INLET #9 AND PROPOSED INLET #5.



LEGEND

- RCP EXISTING STORM SEWER
- RCP PROPOSED STORM SEWER
- UD EXISTING UNDER DRAIN
- UD PROPOSED UNDER DRAIN



RELOCATE TAXIWAY A FROM MID-FIELD INTERSECTION



IL PROJECT: PIA-3343
AIP PROJ: 3-17-0080-XX

FILE: k:\peoria\0406103\drawsheets\020_grad_drain

DESIGN BY: BWG

DRAWN BY: CAG

CHECKED BY: TCS

APPROVED BY: CET

DATE: JUNE 24, 2006

JOB No: 04061-03

GRADING AND DRAINAGE PLAN
SHEET 2 OF 2

SHEET 20 OF 43 SHEETS