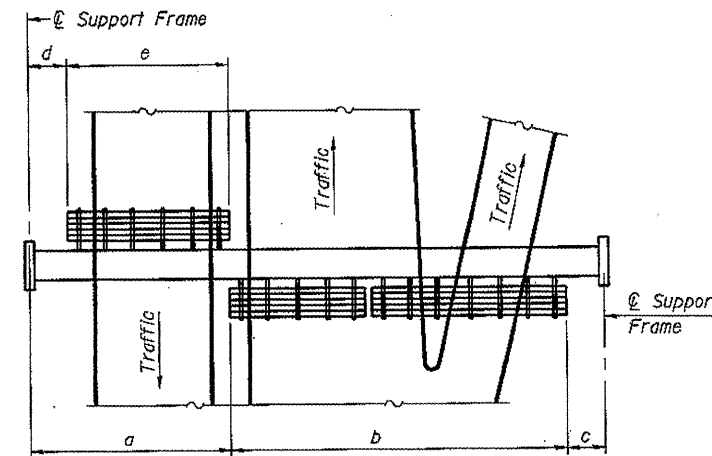


TYPICAL FRONT ELEVATION
 With lights and handrail omitted for clarity.
 For Section B-B, see Base Sheet OS-A-10.

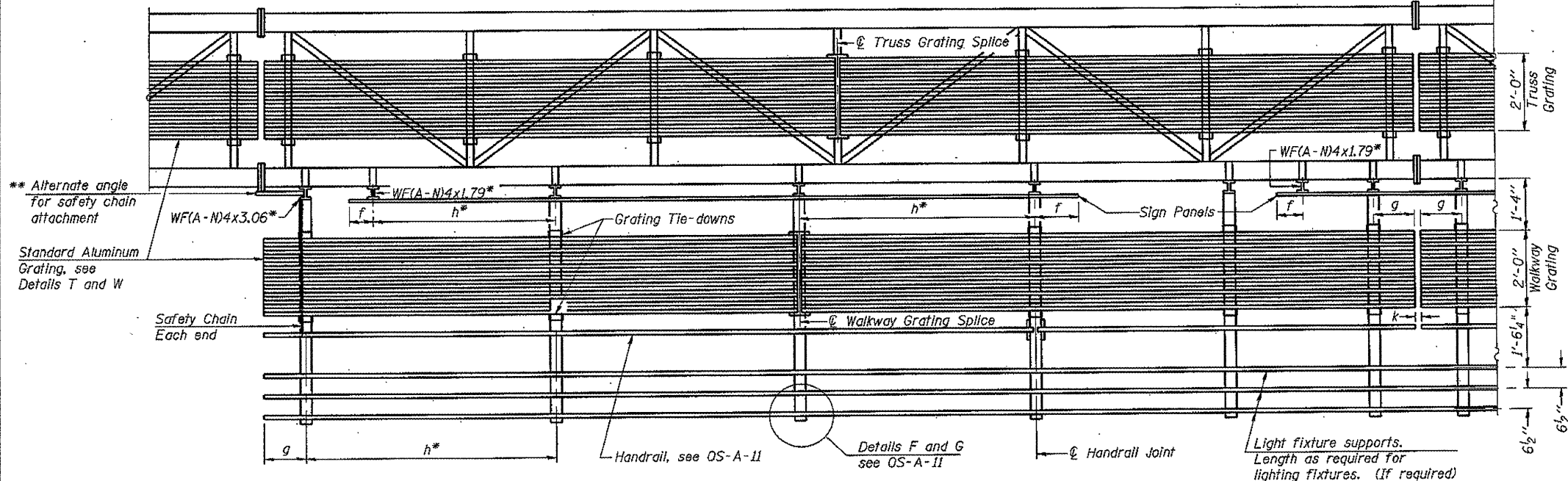


PLAN WALKWAY AND HANDRAIL SKETCH
 (Road plan beneath truss varies)

BRACKET TABLE

WF(A-N)4x1.79 or WF(A-N)4x3.06 ASTM B308, Alloy 6061-T6		
Sign Width		Number Brackets Required
Greater Than	Less Than or Equal To	
	8'-0"	2
8'-0"	14'-0"	3
14'-0"	20'-0"	4
20'-0"	26'-0"	5
26'-0"	32'-0"	6

- Notes:
- * Space walkway brackets WF(A-N)4x3.06 and sign brackets WF(A-N)4x1.79 for efficiency and within limits shown:
 - f = 12" maximum, 4" minimum (End of sign to \mathcal{C} of nearest bracket)
 - g = 12" maximum, 4" minimum (End of walkway grating to \mathcal{C} of nearest support bracket)
 - h = 6'-0" maximum (\mathcal{C} to \mathcal{C} sign and/or walkway support brackets, WF(A-N)4x1.79 or WF(A-N)4x3.06)
 - k = 2" maximum gap between adjacent walkway grating sections and handrail ends
 - ** If walkway bracket at safety chain location is behind sign, add angle to bracket, see Alternate Safety Chain Attachment on Base Sheet OS-A-11.



SECTION A-A

Handrail and walkway shall span a minimum of three brackets between splices and/or gap joints.
 Place all sign and walkway brackets as close to panel points as practical.
 Handrail joints, grating, and light support splices placed as needed.

Structure Number	Station	a	b	c	d	c	Walkway Grating and Handrail Lengths
IS0991080L131.0	22 + 00	16'-0"	50'-0"	8'-0"	N/A	N/A	50' - 0"
IS0991080R133.2	432 + 75	18'-0"	58'-0"	10'-0"	N/A	N/A	58' - 0"
IS0991080L130.9	28 + 25	8'-4"	36'-0"	7'-8"	N/A	N/A	36' - 0"
IS0991080L133.7	464 + 00	12'-0"	51'-0"	1'-6"	N/A	N/A	51' - 6"
IS0991080R132.9	417 + 50	13'-6"	57'-0"	8'-0"	N/A	N/A	57' - 0"
IS0991080R131.8	359 + 00	11'-0"	50'-0"	8'-6"	N/A	N/A	50' - 0"

Truss grating to facilitate inspection shall run full length (center to center of support frames) $\pm 12"$ on overhead trusses.
 Cost of truss grating is included in "Overhead Sign Structure".

Walkway and Truss Grating width dimensions are nominal and may vary $\pm 1/2"$ based on available standard widths.

OS-A-9

1-20-11

FILE NAME =	USER NAME =	DESIGNED -	REVISED -
		CHECKED -	REVISED -
		DRAWN -	REVISED -
		CHECKED -	REVISED -

**STATE OF ILLINOIS
 DEPARTMENT OF TRANSPORTATION**

**OVERHEAD SIGN STRUCTURES
 ALUMINUM WALKWAY DETAILS**

F.A. RTE.	SECTION	COUNTY	TOTAL SHEETS	SHEET NO.
Various I-1 OVD SIN STR REPL 12-02		VARIOUS	39	16
CONTRACT NO. 46175				
ILLINOIS FED. AID PROJECT				