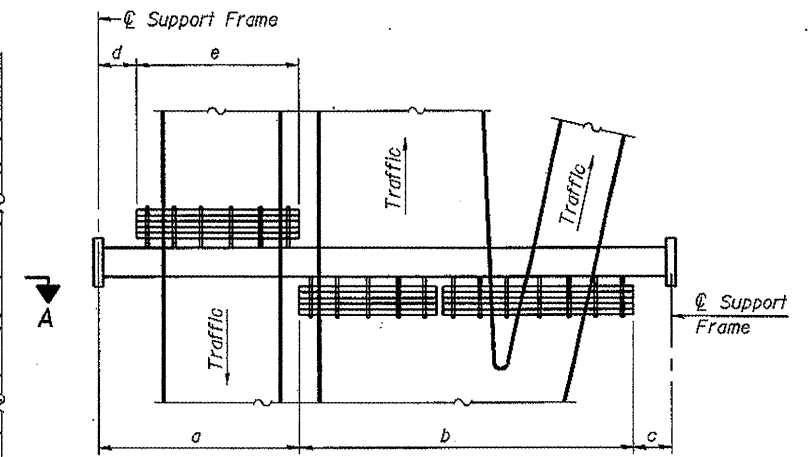


TYPICAL FRONT ELEVATION
 With lights and handrail omitted for clarity.
 For Section B-B, see Base Sheet OS-A-10.



PLAN
WALKWAY AND HANDRAIL SKETCH
 (Road plan beneath truss varies)

BRACKET TABLE

WF(A-N)4x1.79 or WF(A-N)4x3.06 ASTM B308, Alloy 6061-T6		
Sign Width		Number Brackets Required
Greater Than	Less Than or Equal To	
	8'-0"	2
8'-0"	14'-0"	3
14'-0"	20'-0"	4
20'-0"	26'-0"	5
26'-0"	32'-0"	6

Notes:

* Space walkway brackets WF(A-N)4x3.06 and sign brackets WF(A-N)4x1.79 for efficiency and within limits shown:

f = 12" maximum, 4" minimum (End of sign to \mathcal{C} of nearest bracket)
 g = 12" maximum, 4" minimum (End of walkway grating to \mathcal{C} of nearest support bracket)

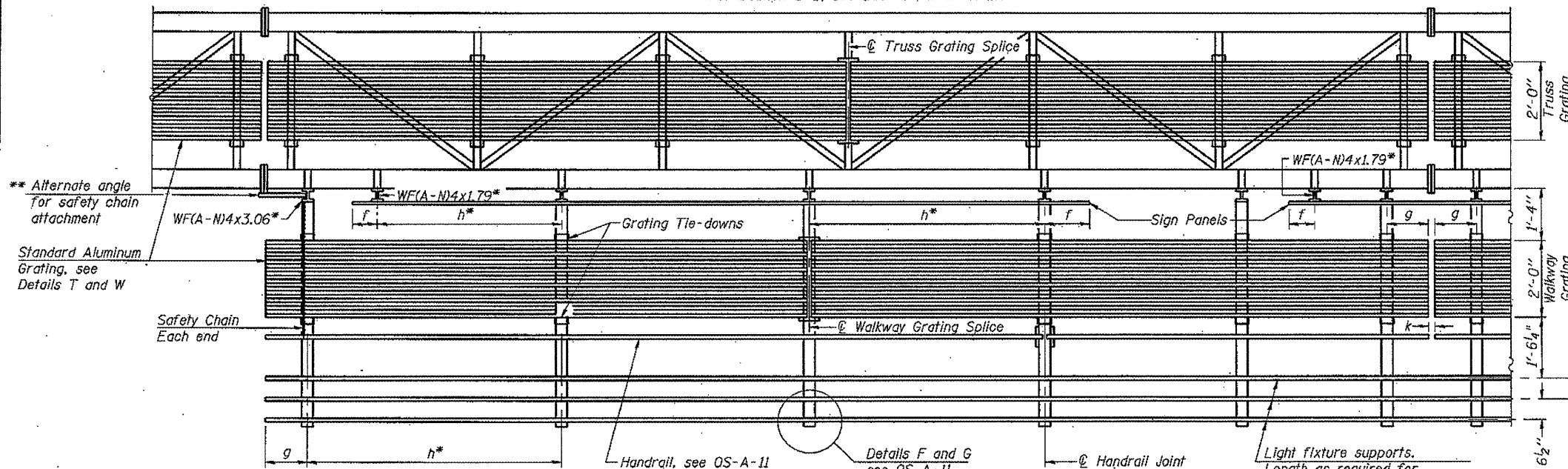
h = 6'-0" maximum (\mathcal{C} to \mathcal{C} sign and/or walkway support brackets, WF(A-N)4x1.79 or WF(A-N)4x3.06)

k = 2" maximum gap between adjacent walkway grating sections and handrail ends

** If walkway bracket at safety chain location is behind sign, add angle to bracket, see Alternate Safety Chain Attachment on Base Sheet OS-A-11.

For Details T and W, Section B-B and Grating Splice Details see Base Sheet OS-A-10.

For Handrail Details see Base Sheet OS-A-11.



SECTION A-A

Handrail and walkway shall span a minimum of three brackets between splices and/or gap joints. Place all sign and walkway brackets as close to panel points as practical. Handrail joints, grating, and light support splices placed as needed.

Structure Number	Station	a	b	c	d	e	Walkway Grating and Handrail Lengths
IS0991080L132.2	379 + 00	14'-0"	69'-0"	12'-6"	N/A	N/A	69' - 0"
IS0161057R340.4	150 + 50	33'-0"	49'-0"	28'-0"	N/A	N/A	49' - 0"
IS0221055R270.7	784 + 00	18'-0"	62'-0"	10'-0"	N/A	N/A	62' - 0"
IS0221055L274.8	1000 + 40				N/A	N/A	
IS0221055L274.9	1006 + 60	36'-0"	47'-0"	9'-0"	N/A	N/A	47' - 0"
IS0161055L276.5	1098 + 50	15'-0"	68'-6"	6'-6"	N/A	N/A	68' - 6"
IS0221055R274.6	625 + 00	41'-0"	37'-0"	13'-6"	N/A	N/A	37' - 0"

Truss grating to facilitate inspection shall run full length (center to center of support frames) $\pm 12"$ on overhead trusses. Cost of truss grating is included in "Overhead Sign Structure".

Walkway and Truss Grating width dimensions are nominal and may vary $\pm 1/2"$ based on available standard widths.

OS-A-9

1-20-11

FILE NAME =	USER NAME =	DESIGNED -	REVISED -	STATE OF ILLINOIS DEPARTMENT OF TRANSPORTATION	OVERHEAD SIGN STRUCTURES ALUMINUM WALKWAY DETAILS	F.A. RTE.	SECTION	COUNTY	TOTAL SHEETS	SHEET NO.
PLOT SCALE =	CHECKED -	REVISED -	VARIOUS			0-1 OVD SIN STR REPL 12-02	VARIOUS	39	17	
PLOT DATE =	DRAWN -	REVISED -	CONTRACT NO. 46175							
	CHECKED -	REVISED -	ILLINOIS FED. AID PROJECT							