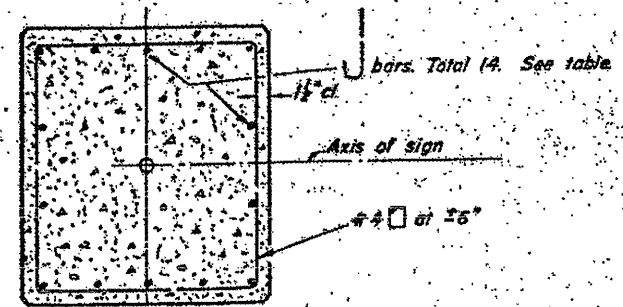


Post Type	Pedestal Size See note	Footing Size See note	Longitudinal Footing Reinforcement		u bars	v bars
			Top	Bottom		
I	3'-2" x 2'-10"		-# bars	-# bars	#6	#6
II	3'-5" x 3'-4"		-# bars	-# bars	#6	#6
III	3'-10" x 3'-7"		-# bars	-# bars	#7	#7
IV	3'-10" x 3'-7"	8'-0" x 6'-0"	8-#7 bars	6-#9 bars	#8	#8
V	4'-2" x 3'-10"		-# bars	-# bars	#10	#10

Note: Pedestals & Footings, longer sides shall be normal to axis of sign. Concrete footing reinforcement shall be incidental to Concrete Foundations.



SECTION A-A

TRUSS No.	Station	Post Type	D	N	Elev E	Elev C	Class X Conc.
CTE-1	972+75	IV	20'	6'-4"	733.1	724.8	13.9
CTW-1	1228+75	IV	20'	6'-4"	694.9	686.6	13.9

WD#6

DESIGNED	EXAMINED
CHECKED	PASSED
DRAWN <i>Wm. H. Best</i>	APPROVED
CHECKED	

OVERHEAD SIGN STRUCTURES - CANTILEVER FOUNDATION DETAILS
 FOR INFORMATION ONLY
 WO #6:1C099I080L147-8
 SHEET 34 OF 39