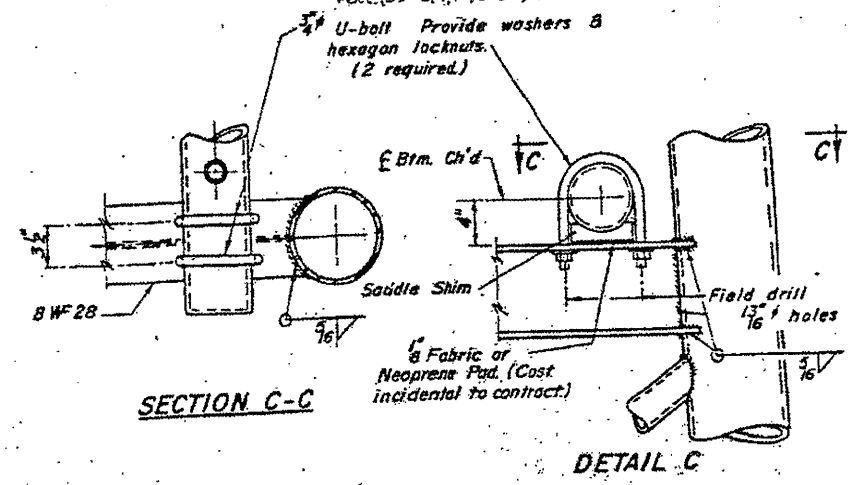


Provide 6 1/2 x 4 1/2 #10 Ga. Cover. Round corners to 1 1/2 radius. Provide 4 - 1/8\"/>



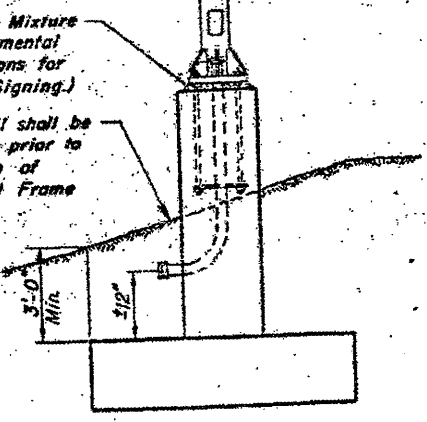
SECTION C-C

DETAIL C

SADDLE SHIM DETAIL
ASTM B-26 Alloy 56-70A (As Cast) or ASTM B-209 Alloy 6061-T6
4 required per sign truss.
D = Outside Diameter of Chord

Note: All U-bolts, washers and nuts required to attach truss to support shall be stainless steel.

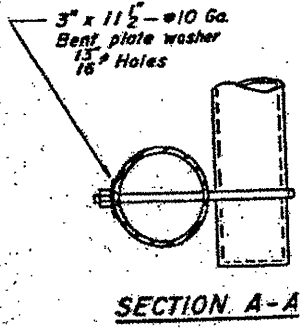
Truss No.	Station	Wall Thickness
W.O.#1 JMS-10	22+00 RD	0.382"
W.O.#3 JMS-11	28+25 RD	0.277"
JRU-14	87+30	0.322"
JPS-15	67+60	0.322"



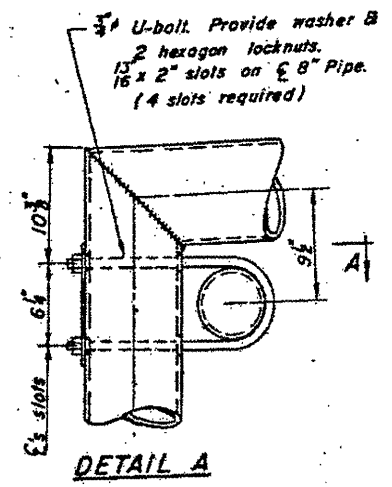
REAR ELEVATION

** Lt. & Rt. Support JMS-10
Lt. Support JMS-11
Rt. Support JMS-11
Rt. Support JRU-14
Rt. Support JPS-15
SIDE ELEVATION

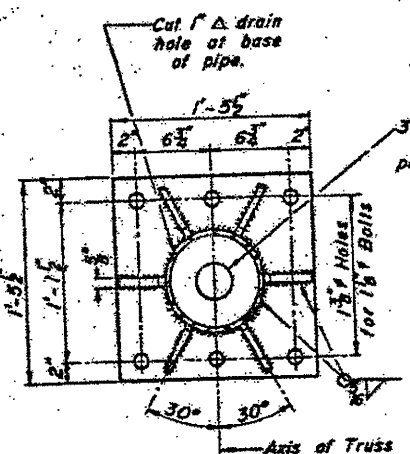
TRUSS SUPPORT DETAILS
(8" Std. Pipe - Type II-A Truss)



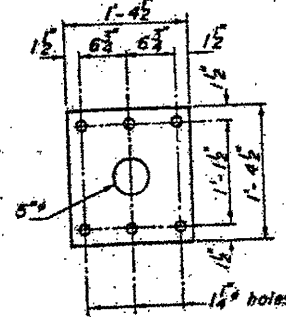
SECTION A-A



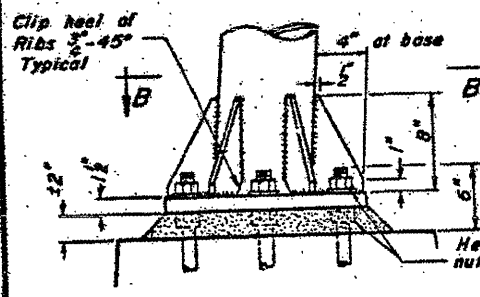
DETAIL A



SECTION B-B

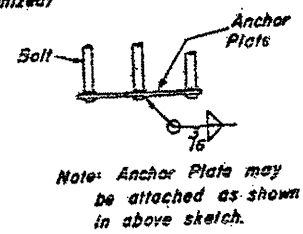


ANCHOR BOLT DETAIL
Galvanize upper 12". Provide 3 Nuts & Washer per bolt



DETAIL B

Note: Ribs shall be cut to fit slope of Pipe. Weld to Pipe and to Base Plate with 1/8 c.t.w.



Note: Anchor Plate may be attached as shown in above sketch.

DESIGNED	DATE
CHECKED	
DRAWN Wm. M. Best	10/6/66
CHECKED	

OVERHEAD SIGN STRUCTURES
SUPPORT FRAME for ALUMINUM TRUSS
W.O.#1) 1S0991080L131.0
W.O.#3) 1S0991080L130.9
(FOR INFORMATION ONLY)